

ACADEMY
ARCHITECTVRE
AND
ARCHITECTVRAL REVIEW.

A REVIEW OF
THE
ROYAL ACADEMY
ARCHITECTVRAL
EXHIBITION
LONDON.

AN
ARCHITECTVRAL
REVIEW OF
GARDEN ARCHITECTURE
PUBLIC BUILDINGS □ BANKS
MONUMENTS & MEMORIALS
COTTAGE HOMES AND
HOUSING SCHEMES

VOLUME 51 □ 1920

NA
1
A15
v. 51



PERMANENT

The Pyramids of Egypt are the most stupendous and lasting monuments that human labour has been known to accomplish and have been objects of wonder from the age of Herodotus to the present time.

SOUND substantial work is, and always has been "worth while." To earn a reputation for skilful tradesmanship and thorough execution is to place yourself in the position of being able to select your own jobs and name your own price.

To such an end this House tenders its services. If you are in any difficulty or are up against any unusual problem our Chemists are your Chemists and our Laboratories your Laboratories—whilst as to goods, remember we, too, have earned a reputation.

PINCHIN, JOHNSON & CO., Ltd

Sole Proprietors and Manufacturers of

MINERVA Pure Paints
and Fine Varnishes
SATINETTE Enamel
DEYDOL Distemper

Woodfillers Stains, Japans, Lacquers, etc for every class of work

SYRONITE Iron Preservative
FENCOL Wood Preservative
N.D.K. (and decay) Stone Preservative
PIXY POLISHES.

Catalogues and Shade Cards sent post free on request

Head Office: General Buildings, ALDWYCH, LONDON, W.C.2

Telephone: CITY 7846 (3 Lines.)

Telegrams: Pinchin-Pinches-London.

WORKS: SILVERTOWN, POPLAR and WEST DRAYTON.

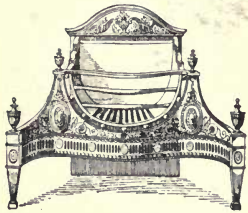
BRANCHES AND AGENTS ALL OVER THE WORLD



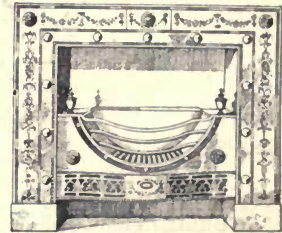
· BY APPOINTMENT ·

· ELSLEY'S · FIREPLACES ·

BASKET GRATE, in the late Seventeenth Century style, suitable for burning either wood or coal; may be had with a brass or bronze front and terminals; it is highly finished, and fitted with bright bars and fire lump back.



REGISTER GRATE, with highly finished steel front; bright mouldings, bright shaped bars, and fire lump back; it is adapted to fit either in a marble mantle piece or with marble surrounds. A curious old Trade Catalogue states that it was made for William, Prince of Orange.

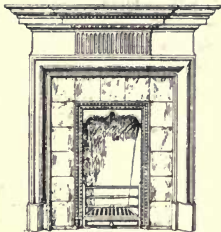


adapted to fit either in a marble mantle piece or with marble surrounds. A curious old Trade Catalogue states that it was made for William, Prince of Orange.



The **TUDOR GRATE** is fitted with a brass panel, bright iron frame and bars and a fire lump back, and can be used either with tile or marble surrounds.

VENTILATING WARM AIR GRATE, arranged to introduce fresh air from external sources thereby ensuring an agreeable and healthful atmosphere, as the supply of air may be regulated by a valve above the fire. This Grate is fitted with a brass panel and bright iron mouldings, and is adapted for either tile or marble surrounds.



MANTLE REGISTER GRATE fitted with tile sides, wood shelf, and fire lump back.

WE invite **BUILDERS, DECORATORS, HOUSE FURNISHERS, SHIPPERS**, etc., to introduce their customers, with the assurance that we shall make every effort to suit the requirements of those who may favour us with a visit.

THOMAS ELSLEY, LIMITED.

Wholesale Ironmongers and Fireplace Manufacturers.
PORTLAND METAL WORKS.

20, 22, 24, 26, 28, 30 Great Titchfield Street.
LONDON. W. 1.

Telephone. Museum. 3442.
Telegrams. Elsleys, Wesdo, London.

PORTFOLIOS OF PLATES

FROM "ACADEMY ARCHITECTURE."

A Comprehensive Series of Illustrations of MODERN ARCHITECTURE, DECORATIVE ART and SCULPTURE, including many Plans, Elevations and Perspectives.

Inland Postage, 8d. per Portfolio extra.

Postage abroad, 1s. per Portfolio extra.

MUNICIPAL BUILDINGS, & COUNTY OFFICES (100 Plates)	15/-	net per Portfolio.
LIBRARIES 2 Portfolios (75 Plates each)	12/6	net per Portfolio.
TOWN HALLS (55 Plates)	15/-	net per Portfolio.
SCHOOLS 2 Portfolios (100 Plates each)	15/-	net per Portfolio.
UNIVERSITIES & COLLEGES (100 Plates)	15/-	net per Portfolio.
ELEVATIONS & HALF-INCH DETAILS 4 Portfolios (100 Plates each)	15/-	net per Portfolio.
THEATRES & CONCERT HALLS (100 Plates)	15/-	net per Portfolio.
HOSPITALS & INFIRMARIES (75 Plates)	12/6	net per Portfolio.
HOTELS, INNS & RAILWAY STATIONS (100 Plates)	15/-	net per Portfolio.
VILLAGE HALLS, INSTITUTES & CLUBS 2 Portfolios (75 Plates each)	12/6	net per Portfolio.
SKETCHES AND STUDIES (75 Plates)	12/6	net per Portfolio.
GOVERNMENT OFFICES (75 Plates)	12/6	net per Portfolio.
MUSEUMS, ART GALLERIES & EXHIBITION BUILDINGS (75 Plates)	12/6	net per Portfolio.
FIRE STATIONS, PUBLIC BATHS & MARKETS	12/6	net per Portfolio.
CHURCH EXTERIORS 2 Portfolios (100 Plates each)	15/-	net per Portfolio.
CHURCH INTERIORS 2 Portfolios (100 Plates each)	15/-	net per Portfolio.
CHURCH EXTERIOR DETAILS (75 Plates)	12/6	net per Portfolio.
CHURCH INTERIOR DETAILS 2 Portfolios (75 Plates each)	12/6	net per Portfolio.
WORKMEN'S DWELLINGS & COTTAGES (75 Plates)	12/6	net per Portfolio.
DOMESTIC ARCHITECTURE, EXTERNAL DETAILS 2 Portfolios (75 Plates each)	12/6	net per Portfolio.
DOMESTIC ARCHITECTURE, TOWN HOUSES (90 Plates)	15/-	net per Portfolio.
ENGLISH DOMESTIC ARCHITECTURE 3 Portfolios (100 Plates each)	15/-	net per Portfolio.
AMERICAN DOMESTIC ARCHITECTURE 2 Portfolios (75 Plates each)	12/6	net per Portfolio.
CONTINENTAL DOMESTIC ARCHITECTURE 3 Portfolios (100 Plates each)	15/-	net per Portfolio.
BUSINESS PREMISES 3 Portfolios (100 Plates each)	15/-	net per Portfolio.
GARDEN ARCHITECTURE 2 Portfolios (75 Plates each)	12/6	net per Portfolio.
DINING ROOMS & DRAWING ROOMS 4 Portfolios (75 Plates each)	12/6	net per Portfolio.
HALLS, SMOKING & BILLIARD ROOMS 3 Portfolios (75 Plates each)	12/6	net per Portfolio.
IDEAL IN SCULPTURE 7 Portfolios (75 Plates each)	12/6	net per Portfolio.
MONUMENTS, TOMBS & MEMORIALS 4 Portfolios (75 Plates each)	12/6	net per Portfolio.
ARCHITECTURAL SCULPTURE 2 Portfolios (75 Plates each)	12/6	net per Portfolio.
DECORATIVE SCHEMES IN LOW RELIEF 2 Portfolios (75 Plates each)	12/6	net per Portfolio.
DECORATIVE SCHEMES, PANELS 2 Portfolios (100 Plates each)	15/-	net per Portfolio.
COLOUR PRINTS FROM ACADEMY ARCHITECTURE Portfolio I	15/-	net.
ELEVATIONS HALF-INCH DETAILS FROM BRITISH COMPETITIONS.		
Portfolio I , GENERAL COMPETITIONS (75 Plates)	12/6	net per Portfolio.
Portfolios II & III , L.C.C. HALL COMPETITION (75 Plates each)	12/6	net per Portfolio.

Published & Sold by **ACADEMY ARCHITECTURE**, 44 Doughty Street, London, W.C.1.

PROPRIETOR: A. E. MARTIN-KAYE.

Technol
A.

ACADEMY ARCHITECTVRE AND ARCHITECTVRAL REVIEW.

VOLUME 51.

1920.

A. E. MARTIN-KAYE, PROPRIETOR.

EDITORIAL OFFICES: 44 DOUGHTY STREET, W.C.1.

CONTENTS

I.—A SELECTION OF PROMINENT DRAWINGS hung at the Exhibition of the Royal Academy of Arts, Burlington House, Piccadilly, London, W.

An Architectural Review of Current Work :—

II.—GARDEN ARCHITECTURE.

III.—PUBLIC BUILDINGS, BANKS, &c., &c.

IV.—MONUMENTS AND MEMORIALS.

V.—COTTAGE HOMES AND HOUSING SCHEMES.

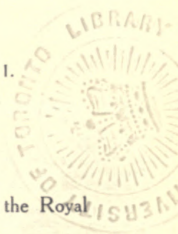
Published Twice a Year.

LONDON :

Published by B. T. BATSFORD, LTD., 94 HIGH HOLBORN.

JAPAN.—THE MARUZEN-KABUSHIKI-KAISHA (Z. P. MARUYA & Co., LTD.), Tokyo, Osaka, Kyoto, Fukuoka and Sendai.

SIMSON & CO. LTD., PRINTERS, HERTFORD, WARE & LONDON



Architecture, Decoration & Furniture OF ENGLISH HOUSES.

Messrs. BATSFORD have a large and varied Stock, both New and Secondhand, of Works on all subjects connected with Architecture, Building, and Decorative Arts of all Times and Countries. They will be pleased to send gratis Illustrated Catalogues on these subjects. In view of the increased interest in English styles, the Publishers direct attention to the many Books they issue on Country Houses, Old and New Cottages, Garden Craft, Ornamental Design, the Arts of the Collector, &

ARCHITECTURE OF THE RENAISSANCE IN ENGLAND

A Series of Views of Exteriors, Interiors, and Details from Mansions, Manor-Houses and other Buildings erected between the years 1560 and 1635, with critical and descriptive text. By J. ALFRED GOTCH, F.S.A. Containing 118 beautiful photographic plates (size, 9 by 14 ins.), and 27 Plates from Measured Drawings, with 180 further illustrations in the text, 2 Vols. Large Folio, buckram, gilt. £10 10s. net.

LATER RENAISSANCE ARCHITECTURE IN ENGLAND

A Record of the Domestic Work erected subsequent to the Elizabethan period. By JOHN BELCHER, R.A., and MERVYN E. MACARTNEY, F.R.I.B.A. Containing 170 magnificent plates (19 by 14 ins.), comprising 130 colotype reproductions of special photographs and 40 examples of measured drawings, together with 155 further illustrations in the text, showing Plans and Details, etc. 2 Vols. Large Folio, buckram, gilt. £10 10s. net.

THE ENGLISH INTERIOR

A Review of the Decoration of English Homes from Tudor Times to the XIXth Century, by ARTHUR STRATTON, F.S.A., F.R.I.B.A., Author of "The Domestic Architecture of the Tudor Period." Containing 120 full-page Plates, including some in Colotype and in Colour, from specially prepared Photographs, Measured Drawings and Sketches, together with numerous Illustrations in the Text. Large Quarto (15 by 11½ ins.), bound in buckram, gilt. £4 4s. net.

DECORATION IN ENGLAND from 1660-1770

By FRANCIS LENYON. A handsome volume with over 350 illustrations, 133 full-page, printed in sepia, and four in colours, comprising Examples of Complete Rooms, Carving and Panelling, Doors, Chimney-Pieces, Plaster Work, Painted Decoration, Wall-Hangings, Carpets, Grates and Fireirons, Lamps, etc. Folio, cloth, £2 10s. net.

THE ENGLISH STAIRCASE

An Historical Account of its Characteristic Types to the End of the XVIIIth Century. By W. H. GODFREY. Containing 6 Colotype Plates reproduced from special Photographs, and 5 Illustrations in the Text, from Sketches, Measured Drawings and Photographs. Imperial 8vo, art linen, gilt. 20s. net.

INTERIOR DECORATION

Its Principles and Practice. By FRANK ALVA PARSONS, President of the New York School of Fine and Applied Art. With 70 Illustrations, chiefly from Photographs of executed examples in various historic and modern styles. Large 8vo, cloth gilt, 30s. net.

ENGLISH HOUSE DESIGN

A Review of the Best Achievements in English Domestic Architecture from the XVIth to the XXth Centuries, together with Numerous Examples of Contemporary Design. By ERNEST WILLMOTT, F.R.I.B.A. With 150 Illustrations, chiefly full page from Photographs; also Plans and Views. Large 8vo, art linen, gilt. 15s. net.

ENGLISH CHURCH WOODWORK

A Study in Craftsmanship during the Mediæval period, 1250-1550. Carefully arranged under subjects, with historical and descriptive notes by F. E. HOWARD. Illustrated by upwards of 380 photographs specially taken by F. H. CROSSLEY, and 150 measured drawings, showing Structural and Decorative Woodwork, Screens, Reredoses, Pulpits, Sedilia, Stalls, Benches, Rood-lofts, Roofs, Movable Fittings, with details of carving and moulding. Crown 4to, art linen, gilt, 35/- net.

THE ENGLISH FIREPLACE.

A History of the Chimney, Chimney Piece, and Firegrate with Accessories, to the beginning of the XIXth Century. By L. A. SHUFFREY, Architect and Decorator. Illustrated by 13 Colotype plates with 200 further illustrations of simple and ornate specimens, Detail, Carving and Ornament. Plates are devoted to Fire-grates, Fire-backs, Fenders, Fire-irons, &c. Crown 4to, art linen, gilt, £2 10s. net.

B. T. BATSFORD, Ltd., ART PUBLISHERS & BOOKSELLERS

94 High Holborn, London, W.C. 1.

In making enquiries of Advertisers, please refer to this Publication.

CLASSIFIED REFERENCE INDEX.

NOTICE.—This classified Trade Index relates *only* to firms whose names have appeared under illustrations in Academy Architecture. We trust that this will greatly assist Architects in placing their orders. a Refers to Public Buildings, &c.

ASPHALTE WORK.

FALDO, THOMAS & CO., LTD., Windsor House, Kingsway.W.C.	48	114-115
FALDO, THOMAS & CO., LTD., Windsor House, Kingsway.W.C.	48	118
LOCH, ADAM, 254, Leith Walk, Leith	48	52

BUILDERS & GENERAL CONTRACTORS.

ANDERSON, P. & W., LTD., 64, Douglas Street, Glasgow	48	56
ANDERSON, P. & W., LTD., 64, Douglas Street, Glasgow	48	58
ARMITAGE & HODGSON, Camp Road Mills, Leeds	46	16
BROWN, L. & SONS, LTD., Macclesfield Rd., Wilms- lo	46	22
CHESSUM, J. & SONS, LTD., Hazlett House, Southampton Buildings, W.C.	48	120-121
CORAH, WILLIAM & SON, Pinfold Gate, Loughborough	47	16
COWLIN, WILLIAM & SON, Stratton St., Bristol	47	18-19
ROBERT CURTIS, 1A, Upper Redlands Rd., Reading	46	106
ROBERT CURTIS, 1A, Upper Redlands Rd., Reading	46	108
ESHELBY, JOHN & SON, Spring St., Sheffield	46	67
ESHELBY, JOHN & SON, Spring St., Sheffield	46	72
FAIRHEAD, ALLEN & SON, Enfield Town	48	28
FREY, DAVID & SON, Bridge Street, Godalming	48	31
GALBRAITH BROS., LTD., Camberwell Green Works, 63 Water- loo St., Camberwell, S.E.	46	98
GARLUCK, JOHN, LTD., 43 Sloane Street, W.	48	113
GERRARD, J. & SONS, LTD., Swinton, Manchester	47	106
GRANT, JAMES, 128 Pitt St., Glasgow	46	38
HOLLAND, HANSEN & CURBITS, LTD., 12 Hyde Street, W.C.	48	114-115
HOLLAND, HANSEN & CURBITS, LTD., 12 Hyde Street, W.C.	49	117
HOLLAND, HANSEN & CURBITS, LTD., 12 Hyde Street, W.C.	49	114-115
HOLLAND, HANSEN & CURBITS, LTD., 12 Hyde Street, W.C.	49	116
KINGERLEE, T. H. & SONS, Queen Street, Oxford, and Uxbridge Road, Shepherds Bush, W.	51	15a
KINGERLEE, T. H. & SONS, 35, Queen Street, Oxford and Uxbridge Road, Shepherds Bush, W.	51	16a
LINGHAM, J. E., High Street, Northfleet	49	28-29
MARTIN, H., LTD., Northampton	48	54
MEIKLE, J. & D., Newton Steam Joinery Works, Ayr	47	53
MILLAR, JAMES & SONS, Millar Place, Edinburgh	47	54-55
MILLAR, JAMES & SONS, Millar Place, Edinburgh	47	56-57
MILLAR, JAMES & SONS, Millar Place, Edinburgh	47	60-62
MILLAR, JAMES & SONS, Millar Place, Edinburgh	48	34
MILLAR, JAMES & SONS, Millar Place, Edinburgh	48	12-13
MILLAR, JAMES & SONS, Millar Place, Edinburgh	49	18-19
MINTER, F. G., Ferry Works, Putney, S.W.	49	130-131
MINTER, F. G., Ferry Works, Putney, S.W.	46	74-75
MORTON BROWNE, LTD., Cow Lane Bridge, Chester	46	38-39
MUSSELWHITE & SON, Cross St., Hastings	49	7
NICHOLSON, WILLIAM & SONS (LEEDS) LTD., 7 Sheep St., Leeds	49	2-3
RICE & SON, 15 Stockwell Rd., London, S.E.	48	23
SCOTT BROS., Prospect Place, Hythe, Kent	48	28
TARRANT, W. G., Byfleet, Surrey	48	18
TARRANT, W. G., Byfleet, Surrey	48	19
TARRANT, W. G., Byfleet, Surrey	49	22
TARRANT, W. G., Byfleet, Surrey	49	27
VIGOR, ARTHUR, LTD., 40 Knightsbridge, S.W.	49	88-89
WALLS, G. E. & SONS, LTD., Pantan Street, Haymarket, and Maldstone, Kent	49	6
WALLS, G. E. & SONS, LTD., Pantan Street, Haymarket, and Maldstone, Kent	49	7
WALKER, G. E. & SONS, LTD., Pantan Street, Haymarket, and Maldstone, Kent	49	8-9
WEBSTER, F. & SON, Grove Vale Works, East Dulwich, S.E.	46	94-95
WHITE, J. H. & SONS, Buckle Court, St. Andrews	49	32
WHITEHEAD, L. & W., LTD., Portland Place, Clapham Rd., S.W.	46	21

CASEMENTS & SASHES.

BAYLISS, C. G., West Street, Haslemere, Surrey	48	30
CRITTALL MANFG. CO., LTD., Manor Works, Braintree, Essex	49	12-13
CRITTALL MANFG. CO., LTD., Manor Works, Braintree, Essex	49	18-19
CRITTALL MANFG. CO., LTD., Manor Works, Braintree, Essex	49	106-107
CRITTALL MANFG. CO., LTD., Manor Works, Braintree, Essex	49	108
CRITTALL MANFG. CO., LTD., Manor Works, Braintree, Essex	49	110
CRITTALL MANFG. CO., LTD., Manor Works, Braintree, Essex	49	111
CRITTALL MANFG. CO., LTD., Manor Works, Braintree, Essex	49	114-115
CRITTALL MANFG. CO., LTD., Manor Works, Braintree, Essex	49	116
CRITTALL MANFG. CO., LTD., Manor Works, Braintree, Essex	48	48
HOPE, HENRY & SONS, LTD., 55 Lionel Street, Birmingham	48	54

CASEMENTS & SASHES (contd.)

HOPE, HENRY & SONS, LTD., 55 Lionel Street, Birmingham	48	58
HOPE, HENRY & SONS, LTD., 55 Lionel Street, Birmingham	48	55
HOPE, HENRY & SONS, LTD., 55 Lionel Street, Birmingham	48	59
HOPE, HENRY & SONS, LTD., 55 Lionel Street, Birmingham	48	118
HOPE, HENRY & SONS, LTD., 55 Lionel Street, Birmingham	49	97
HOPE, HENRY & SONS, LTD., 55 Lionel Street, Birmingham	49	98-99
PYE, JOHN, Moreton-in-Marsh, Glos.	48	10-11
WILLIAMS, GAMON & CO., Kaleyard Works, Chester	51	48

CELL FITTINGS.

CHARLES SMITH, SONS & CO., LTD., Deritend Bridge Works, Birmingham	41	1a
CHARLES SMITH, SONS & CO., LTD., Deritend Bridge Works, Birmingham	51	2a

COUNTER GRILLES.

COLLEGE & BRIDGEN, Midland Works, Church Lane Wolverhampton	51	5a
--	----	----

W.I. CASEMENTS.

CRITTALL MANFRS', CO. LTD., Manor Works, Braintree, Essex	46	8
CRITTALL MANFRS', CO. LTD., Manor Works, Braintree, Essex	48	12-13

DOOR FURNITURE.

FARADAY & SON, 146-150 Wardour St., London, W.	47	72-73
FARADAY & SON, 146-150 Wardour St., London, W.	47	74-75
CHARLES SMITH, SONS & CO., LTD., Deritend Bridge Works, Birmingham	51	3a
CHARLES SMITH, SONS & CO., LTD., Deritend Bridge Works, Birmingham	51	4a

DOOR SPRINGS, HINGES AND LOCKS.

ROBERT ADAMS, 3-5, Emerald Street, Holborn, W.C.	51	1a
ROBERT ADAMS, 3-5, Emerald Street, Holborn, W.C.	51	2a
ROBERT ADAMS, 3-5, Emerald Street, Holborn, W.C.	51	8a
ROBERT ADAMS, 3-5, Emerald Street, Holborn, W.C.	51	9a
ROBERT ADAMS, 3-5, Emerald Street, Holborn, W.C.	51	10-11a
COLLEGE & BRIDGEN Midland Works, Church Lane, Wolverhampton	51	6-7a

ELECTRIC CLOCKS.

MAGNETA TIME CO., LTD., 14-16, Cartaret Street, S.W. 1.	51	15a
MAGNETA TIME CO., LTD., 14-16, Cartaret Street, S.W. 1.	51	16a

ELECTRIC LIGHTING & FITTINGS.

CASH, H. J. & CO., Caxton House, Westminster, S.W.	49	97-99
CASH, H. J. & CO., Caxton House, Westminster, S.W.	49	98-99
CASH, H. J. & CO., Caxton House, Westminster, S.W.	51	6-7
CASH, H. J. & CO., Caxton House, Westminster, S.W.	51	10-11
FARADAY & SON, 146-150 Wardour St., London, W.	47	72-73
FARADAY & SON, 146-150 Wardour St., London, W.	47	74-75
HILL & HARRINGTON, LTD., 76A Gt. Portland St., London, W.	46	8
PRIMROSE & PRIMROSE, 199 Bath Street, Glasgow	48	52
RAWLINGS BROS., LTD., 82 Gloucester Rd., S. Kensington, W.	48	30
RAWLINGS BROS., LTD., 82 Gloucester Rd., S. Kensington, W.	48	31
RAWLINGS BROS., LTD., 82 Gloucester Road, S. Kensington, W.	49	4
TORRENCE, J. W., 13 Campbell Street, Hamilton	48	89-91
TORRENCE, J. W., 13 Campbell Street, Hamilton	48	23
TREDEGARS, LTD., 7 Brook Street, London, W.	48	49
GEORGE WRAGGE, LTD., Wardry Works, Salford, Manchester	51	1a
GEORGE WRAGGE, LTD., Wardry Works, Salford, Manchester	51	2c

FACING BRICKS.

G. TUCKER & SON, LTD., Loughborough, Leicestershire	51	3a
G. TUCKER & SON, LTD., Loughborough, Leicestershire	51	4a

FIREPROOF & MANTELS.

WRIGHT, G. LTD., 155 Queen Victoria St., E.C.	46	38
WRIGHT, G. LTD., Rotherham	51	3
WRIGHT, G. LTD., Rotherham	51	4c

FIREPROOF FLOORS & ROOFS.

KLEINE PATENT FIRE-RESISTING FLOORING SYS., LTD., 133- 136 High Holborn, London, W.C.	47	106
KLEINE PATENT FIRE-RESISTING FLOORING SYS., LTD., 133- 136 High Holborn, London, W.C.	49	11

FLOORING.

THE BRITISH DOLOMENT CO., LTD., 167, Strand, W.C. 1.	51	3a
THE BRITISH DOLOMENT CO., LTD., 167, Strand, W.C. 1.	51	4a

Classified Reference Index.

ORNAMENTAL, PLASTER, LEAD & IRON WORK.

BROMSGROVE GUILD, Bromsgrove, Worcestershire	46	94-95
BROMSGROVE GUILD, Bromsgrove, Worcestershire	46	97
GEORGE WRAOGE, LTD., Wardry Works, Salford, Manchester	51	1a
GEORGE WRAOGE, LTD., Wardry Works, Salford, Manchester	51	2a
MUSGROVE & CO., LTD., Belfast and London	49	102
MUSGROVE & CO., LTD., Belfast and London	49	104
MUSGROVE & CO., LTD., Belfast and London	49	105

ORNAMENTAL LEAD RAINWATER HEADS.

CASHMORE, H. W. & Co., 96 Victoria St., S.W.; Works and Foundries, Post Office Approach, Balham, S.W.	49	97
CASHMORE, H. W. & Co., 96 Victoria St., S.W.; Works and Foundries, Post Office Approach, Balham, S.W.	49	98-99

ORNAMENTAL METAL WORK.

CASHMORE, H. W. & Co., 96 Victoria St., S.W.; Works and Foundries, Post Office Approach, Balham, S.W.	49	105-107
CASHMORE, H. W. & Co., 96 Victoria St., S.W.; Works and Foundries, Post Office Approach, Balham, S.W.	49	108
GEORGE WRAOGE, LTD., Wardry Works, Salford, Manchester	51	10-11a

ORNAMENTAL RAILINGS.

H. W. CASHMORE & Co., Post Office Approach, Balham, S.W.12	51	8a
H. W. CASHMORE & Co., Post Office Approach, Balham, S.W.12	51	9a
G. WRIGHT, LTD., 155 Queen Victoria St., London, E.C.	46	8

PANELLING.

ELLIOTT, SAMUEL & SONS (Reading) LTD., Caversham, Reading	47	65
MELLIER & Co., Mellier House, Albemarle St. and 7 Wybert St., W.	49	114-115
MELLIER & Co., Mellier House, Albemarle St. and 7 Wybert St., W.	49	116

PATENT GLAZING TO SKYLIGHTS.

HOPE, HENRY & SONS, LTD., 55, Lionel Street, Birmingham ...	48	40-41
HOPE, HENRY & SONS, LTD., 55, Lionel Street, Birmingham ...	48	44
HOPE, HENRY & SONS, LTD., 55, Lionel Street, Birmingham ...	48	49

PLASTER WORK.

BATHGATE, H. S., 540 Duke Street, Glasgow	48	60
BATHGATE, H. S., 540 Duke Street, Glasgow	48	62

PLUMBER WORK.

BLAIKIE, JOHN & SONS, Bon-Accord Metal Works, Aberdeen...	48	42
---	----	----

PUMPING PLANT, &c.

G. N. HADEN & SONS, LTD., Lincoln Works, Kingsway, London, W.C. 2	41	23
--	----	----

RELIEF DECORATION IN FIBROUS PLASTER.

JACKSON, G. & SONS, LTD., 49 Rathbone Place, W.	47	72-73
JACKSON, G. & SONS, LTD., 49 Rathbone Place, W.	47	74-75
JACKSON, G. & SONS, LTD., 49 Rathbone Place, W.	48	124-125
JACKSON, G. & SONS, LTD. (G. P. Bankart), 49 Rathbone Place, W.	48	17
JACKSON, G. & SONS, LTD. (G. P. Bankart), 49 Rathbone Place, W.	48	18

RELIEF DECORATION, ETC.—contd.

JACKSON, G. & SONS, LTD. (G. P. Bankart), 49 Rathbone Place, W.	48	26
JACKSON, G. & SONS, LTD. (G. P. Bankart), 49 Rathbone Place, W.	48	54
JACKSON, G. & SONS, LTD. (G. P. Bankart), 49 Rathbone Place, W.	48	56
JACKSON, G. & SONS, LTD. (G. P. Bankart), 49 Rathbone Place, W.	48	58
MARTYN, H. H. & Co., LTD., Cheltenham	47	65
MARTYN, H. H. & Co., LTD., Cheltenham	47	68
MARTYN, H. H. & Co., LTD., Cheltenham	48	118

REVOLVING DOORS.

SAMUEL ELLIOTT & SONS, Reading	51	8a
SAMUEL ELLIOTT & SONS, Reading	51	9a

ROOFING (GLAZING).

THE BRITISH CHALLENGE GLAZING CO., LTD., 92 Tooley St., S.E.	49	104
---	----	-----

SANITARY APPLIANCES AND PLUMBING.

WM. GRIFFITHS, SONS & CROMWELL, LTD., 22, Upper Duke Street, Liverpool	51	10-11a
---	----	--------

SCULPTURE WORK.

H. H. MARTYN & Co., LTD., Cheltenham	46	126
H. H. MARTYN & Co., LTD., Cheltenham	46	127
H. H. MARTYN & Co., LTD., Cheltenham	48	118

SHOP FITTINGS.

COURTNEY, POPE & Co., Alpha Place, King's Cross, N. ...	49	114-115
COURTNEY, POPE & Co., Alpha Place, King's Cross, N. ...	49	116
HARRIS & SHELDEN, LTD., Stafford Street, Birmingham ...	46	20

STEEL FRAMING.

SHAW, MATTHEW T. & Co., LTD., Engineers and Contractors, West Ferry Road, Millwall, E.	49	12-13
---	----	-------

STONE WORK.

DEELEY, HENRY LTD., Rowsley, Derbyshire	47	16
--	----	----

TERRA COTTA AND GLAZED BRICK.

SHAW'S GLAZED BRICK CO., LTD., Whitebirk, Darwen, Lancs.	46	102-103
--	----	---------

TERRAZZO FLOORING AND LAVATORY DIVISIONS.

MARBLE MOSAIC CO., Mitchell Lane, Victoria St., Bristol ...	49	97
MARBLE MOSAIC CO., Mitchell Lane, Victoria St., Bristol ...	49	98-99
MARBLE MOSAIC CO., Mitchell Lane, Victoria St., Bristol ...	49	102
MARBLE MOSAIC CO., Mitchell Lane, Victoria St., Bristol ...	49	104
MARBLE MOSAIC CO., Mitchell Lane, Victoria St., Bristol ...	49	105

TILES.

Craven, DUNNILL & Co., LTD., Jackfield, Shropshire... ..	51	10-11a
--	----	--------

WINDOW GEARING.

ROBERT ADAMS, 3-5, Emerald Street, Holborn, W.C.	51	12a
ROBERT ADAMS, 3-5, Emerald Street, Holborn, W.C.	51	13a
ROBERT ADAMS, 3-5, Emerald Street, Holborn, W.C.	51	14a
ROBERT ADAMS, 3-5, Emerald Street, Holborn, W.C.	43	10-11

ARCHITECTURAL
DECORATORS



TO HIS MAJESTY
KING GEORGE V.

BY APPOINTMENT

H. H. MARTYN & Co. LTD.

CHELTENHAM



MEMORIALS

IN
BRONZE, MARBLE, STONE & WOOD

ALSO

STAINED GLASS WINDOWS

WOOD-CARVING & HIGH-CLASS JOINERY

FOR

CLASSIC & ECCLESIASTICAL WORK

OF ALL DESCRIPTIONS.

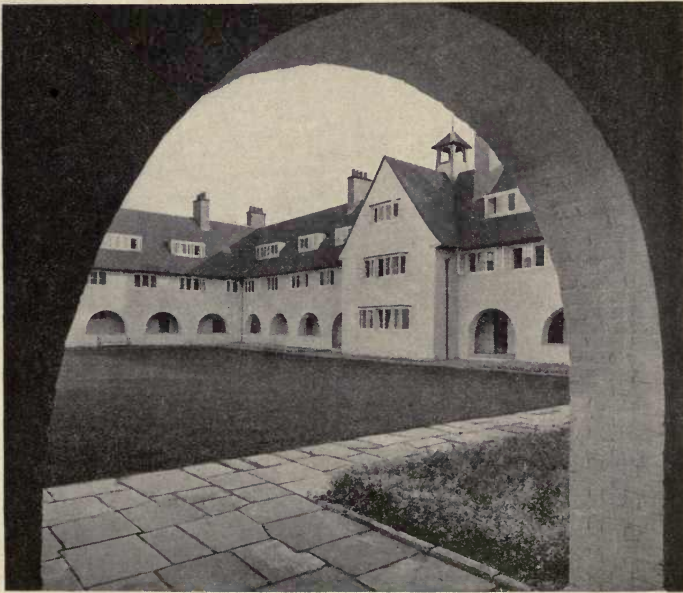
And at 5 GRAFTON STREET, BOND STREET, LONDON, W. 1

Telegrams { "Sunningend," Cheltenham.
 " "Sunningend," London.

Telephones { 1162-3-4 Cheltenham
 1148-9 Regent.

In making enquiries of Advertisers, please refer to this Publication.

ACADEMY ARCHITECTURE
1919-20.
LONDON.



Waterlow Court.

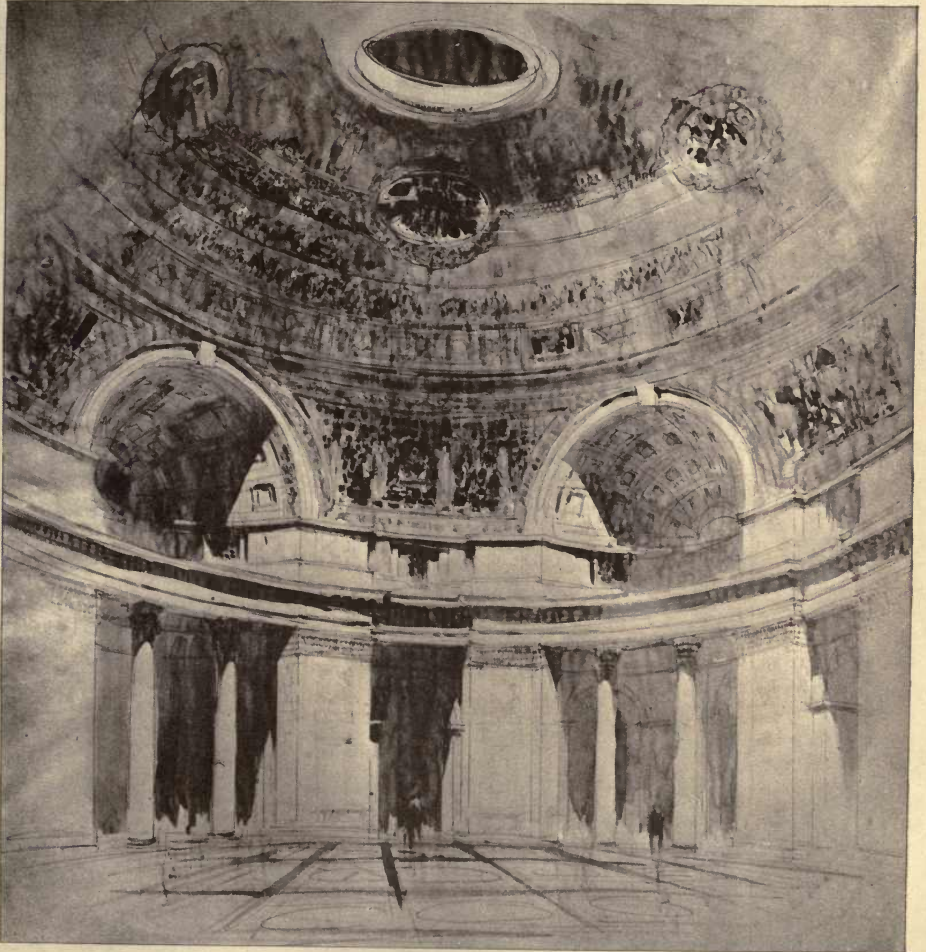
M. H. BAILLIE SCOTT, Architect.

Academy Architecture.



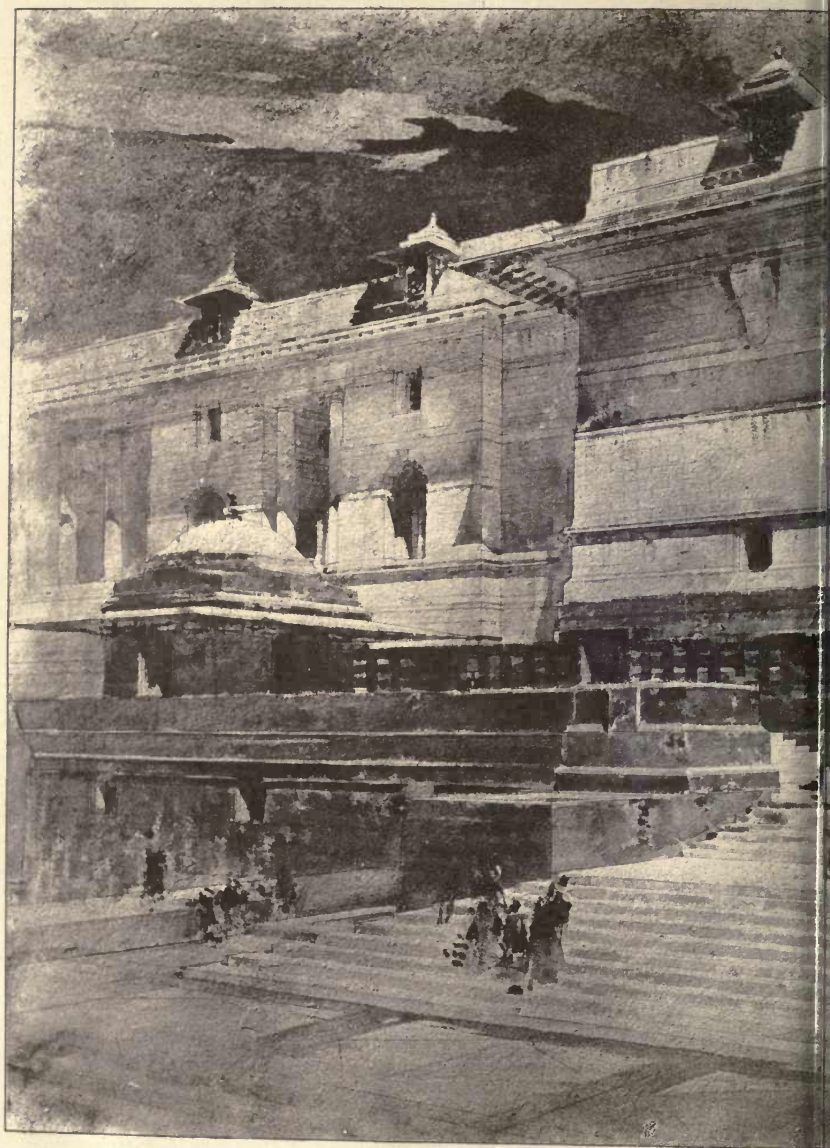
Seal Hollow, Sevenoaks: Garden Front.

M. H. BAILLIE SCOTT, Architect.

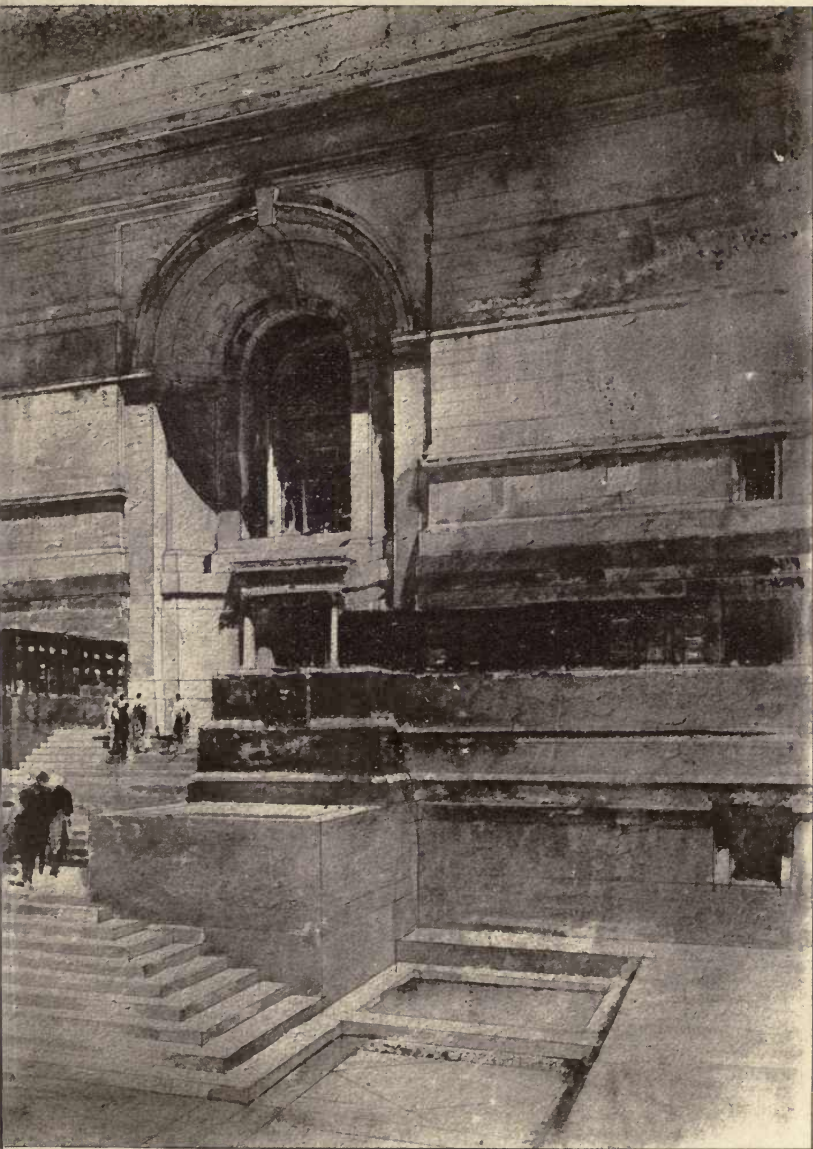


Interior Durbar Hall : Government House, New Delhi.

Sir EDWIN L. LUTYENS, A.R.A., Architect.



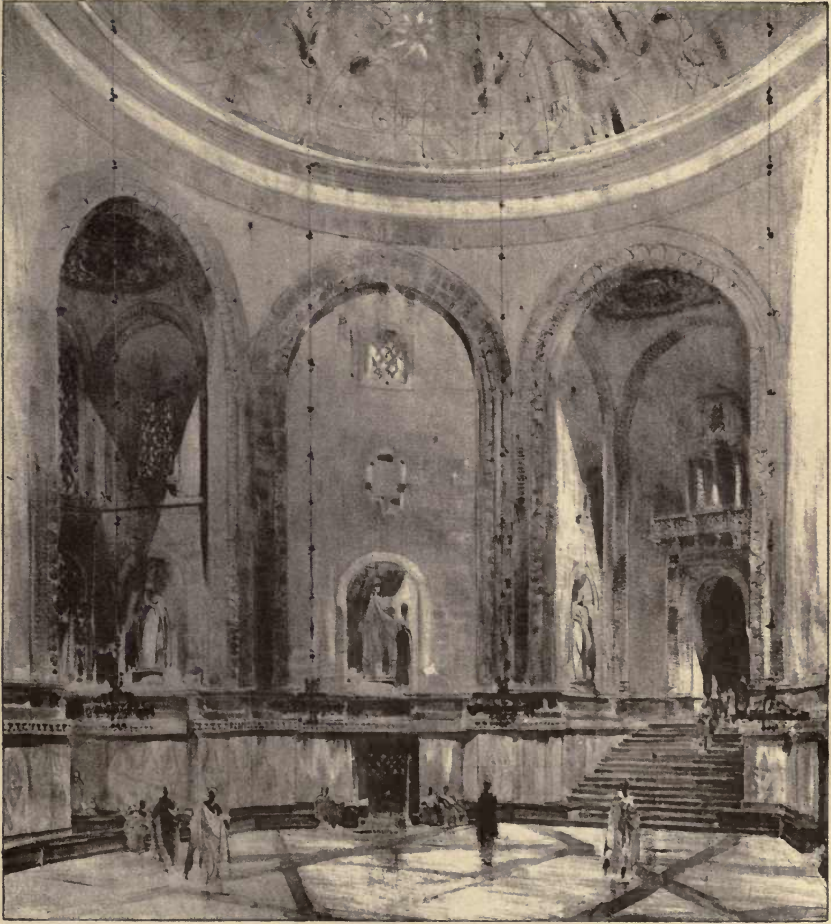
Government House, New Delhi : Entrance Facade, North.



Sir EDWIN L. LUTYENS, A.R.A., Architect.

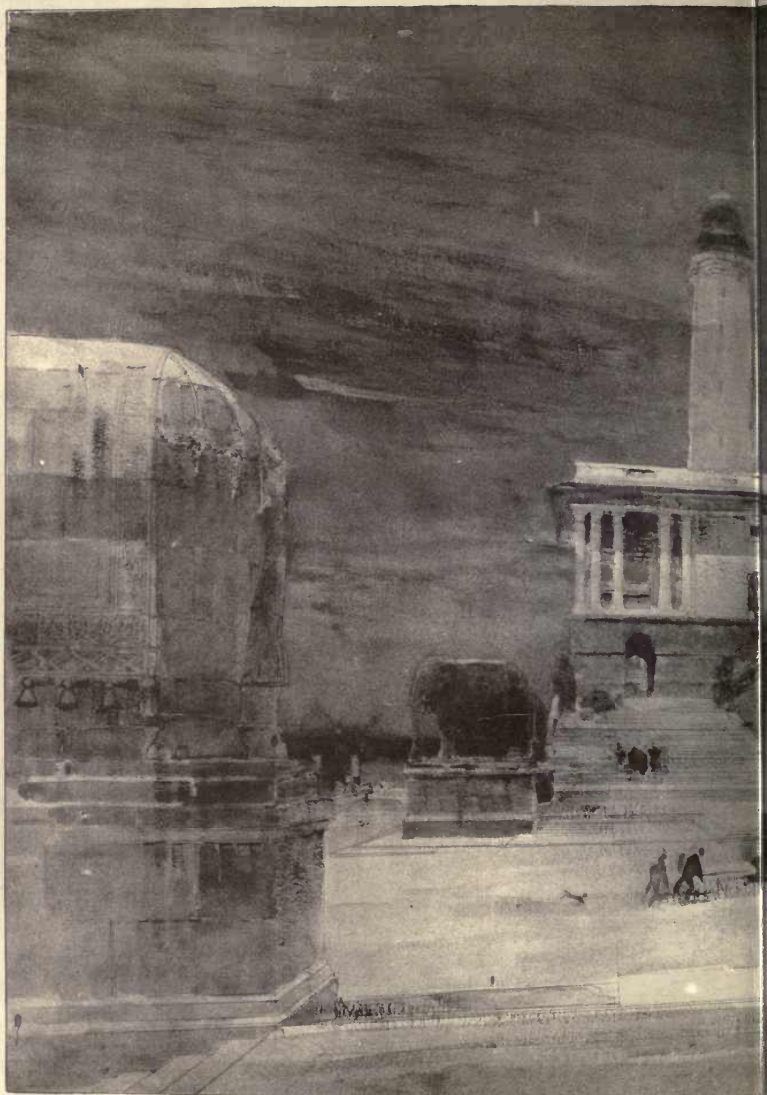


Interior Garden Loggia : Government House, New Delhi. Sir EDWIN L. LUTYENS, A.R.A., Architect.



Imperial Delhi : the Great Hall of the Secretariat.

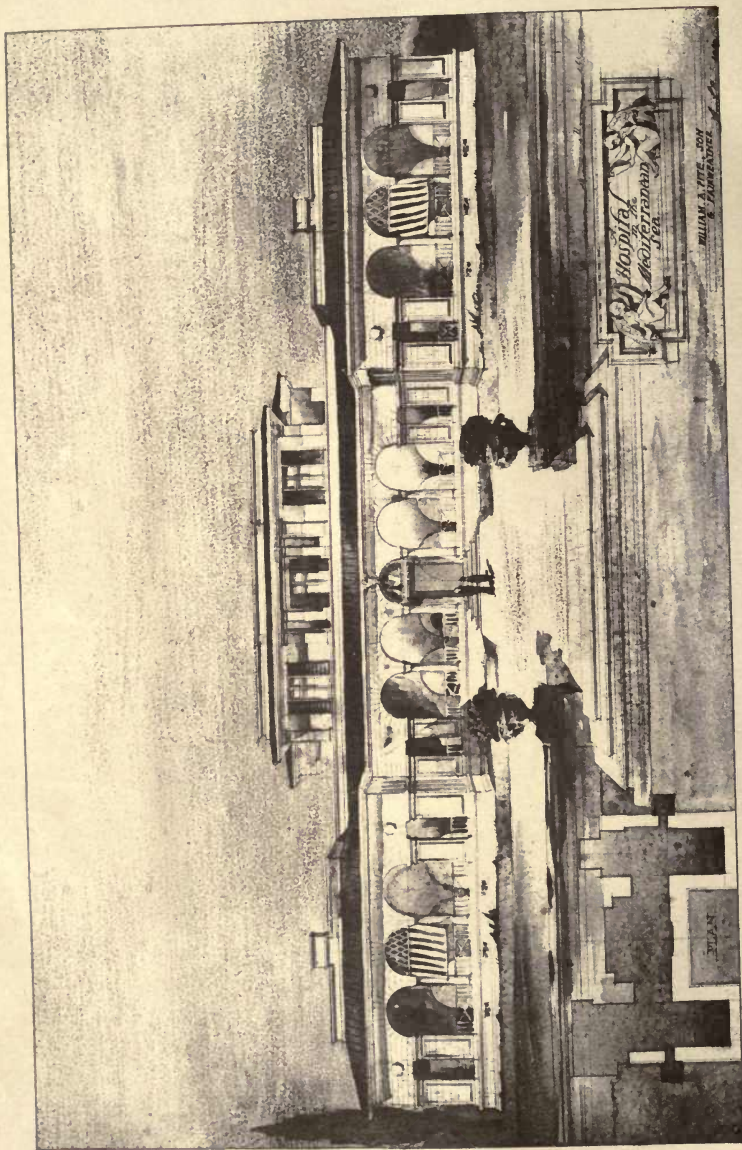
HERBERT BAKER, Architect.



Imperial Delhi : Processional Way and Great Stairway.



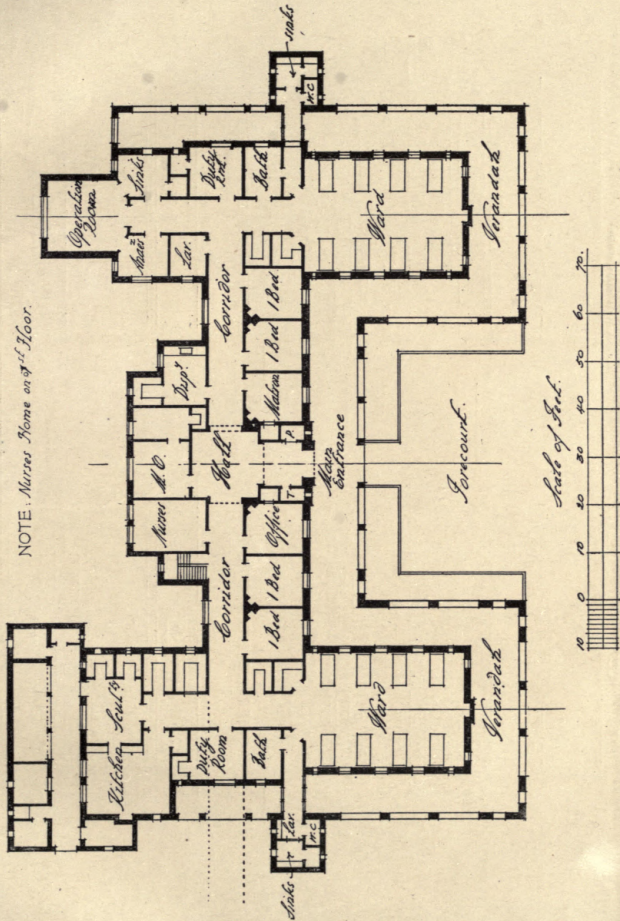
HERBERT BAKER, Architect.



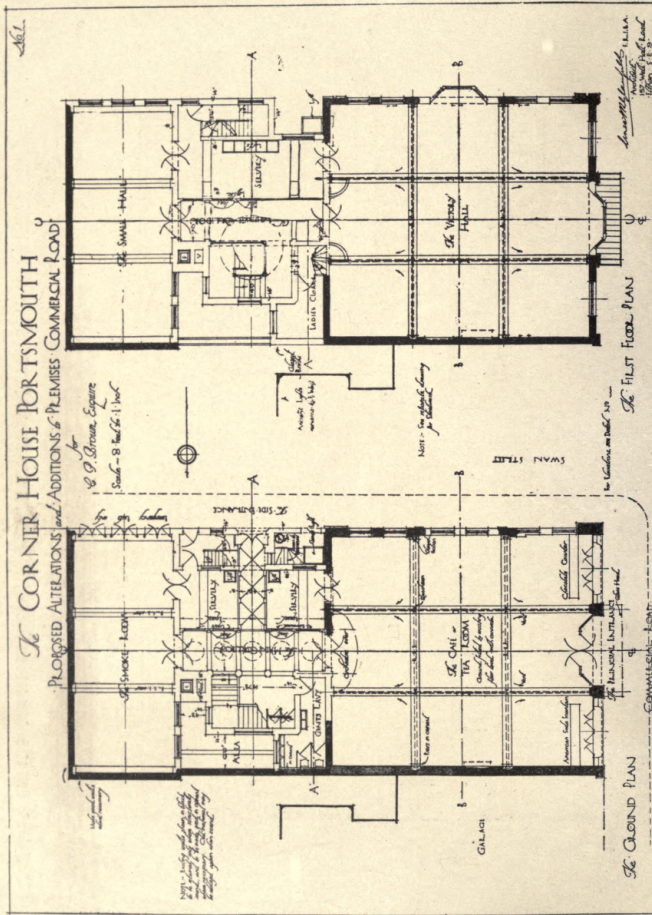
Hospital on the Mediterranean.

WILLIAM A. PITE, SON & FAIRWEATHER, Architects.

Academy Architecture.



Hospital on the Mediterranean. WILLIAM A. PITE, SON & FAIRWEATHER, Architects.



The Corner House, Portsmouth.

ERNEST B. GLANFIELD, Architect.



The Victory Hall, Corner House, Portsmouth.

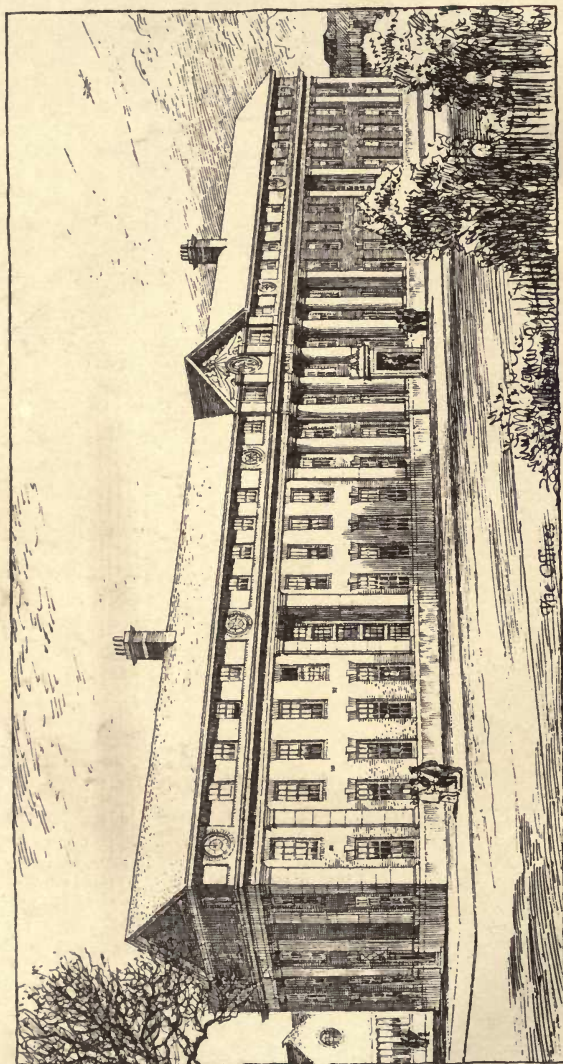
E. B. GLANFIELD, Architect.



Imperial Delhi : Carriage Entrance, the Secretariat Buildings.



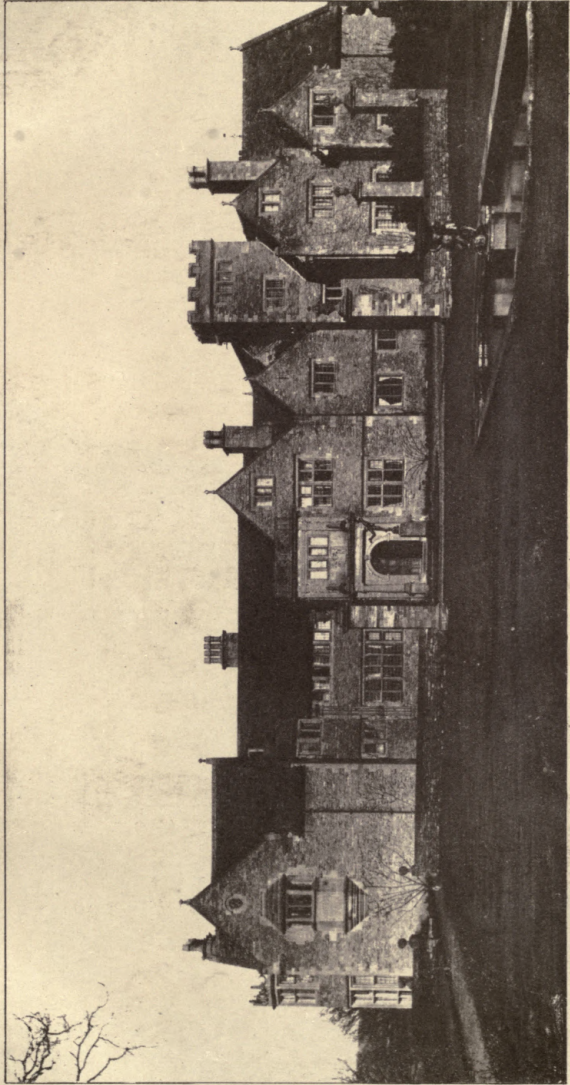
HERBERT BAKER, Architect.



Shorttown, Harrowden, Bedford.

Heating, Ventilating and Hot Water Supply: G. N. HADEN & SONS, Lincoln House, Kingsway, W.C.

CAKETT & BURNS DICK, Architects.



Nether Swell Manor. Gloucestershire.

E. GUY DAWBER, Architect.



Hotel at Hyde Park Corner.



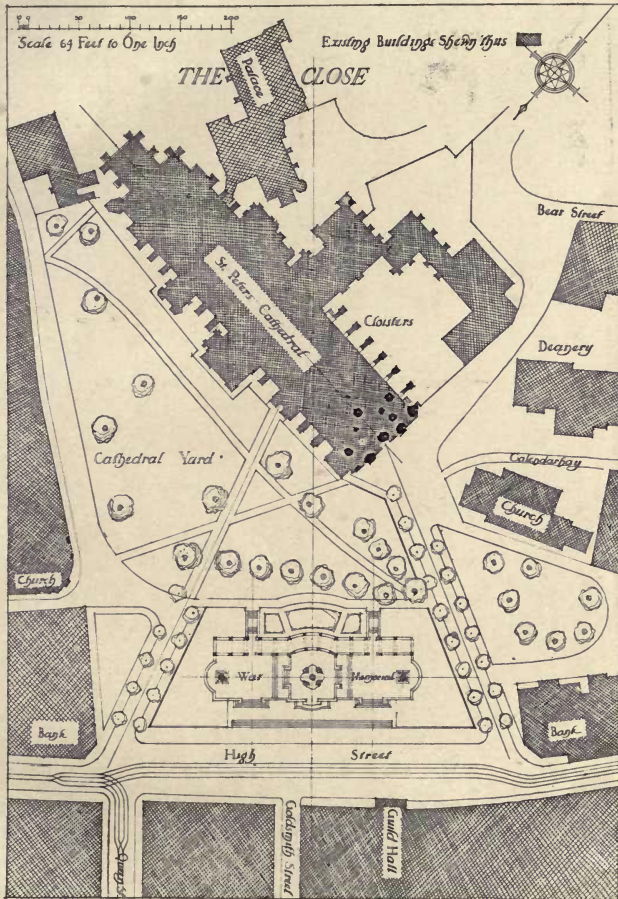
FRANK T. VERITY, Architect.



Proposed War Memorial, Exeter.

CYRIL A. FAREY, Architect.

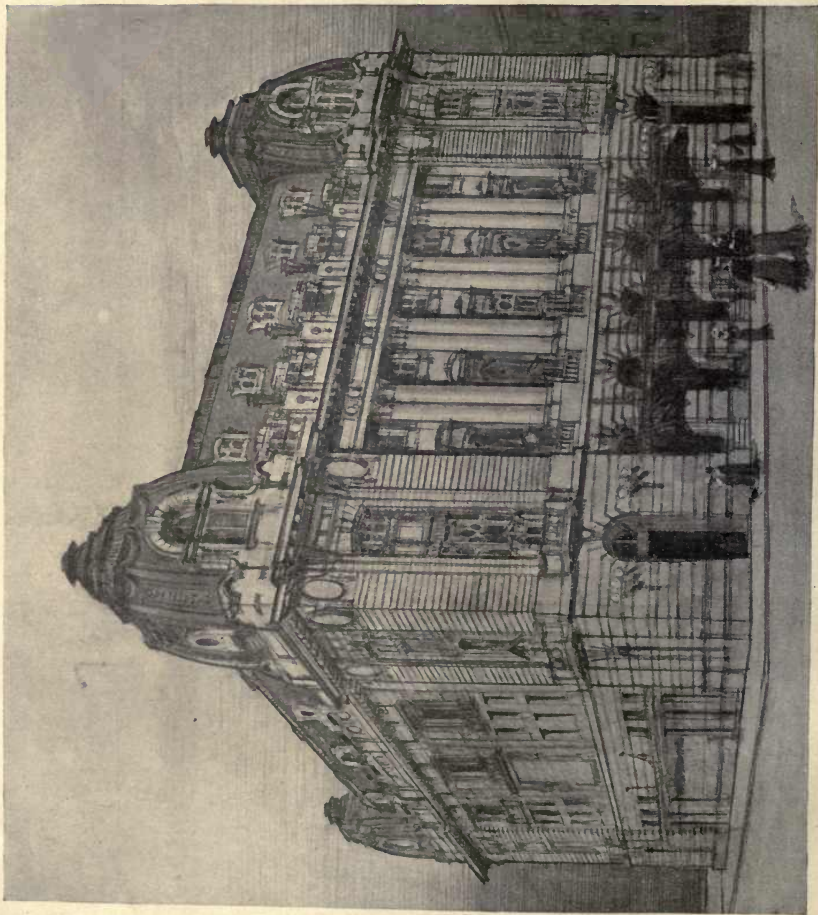
Academy Architecture.



Proposed War Memorial, Exeter.

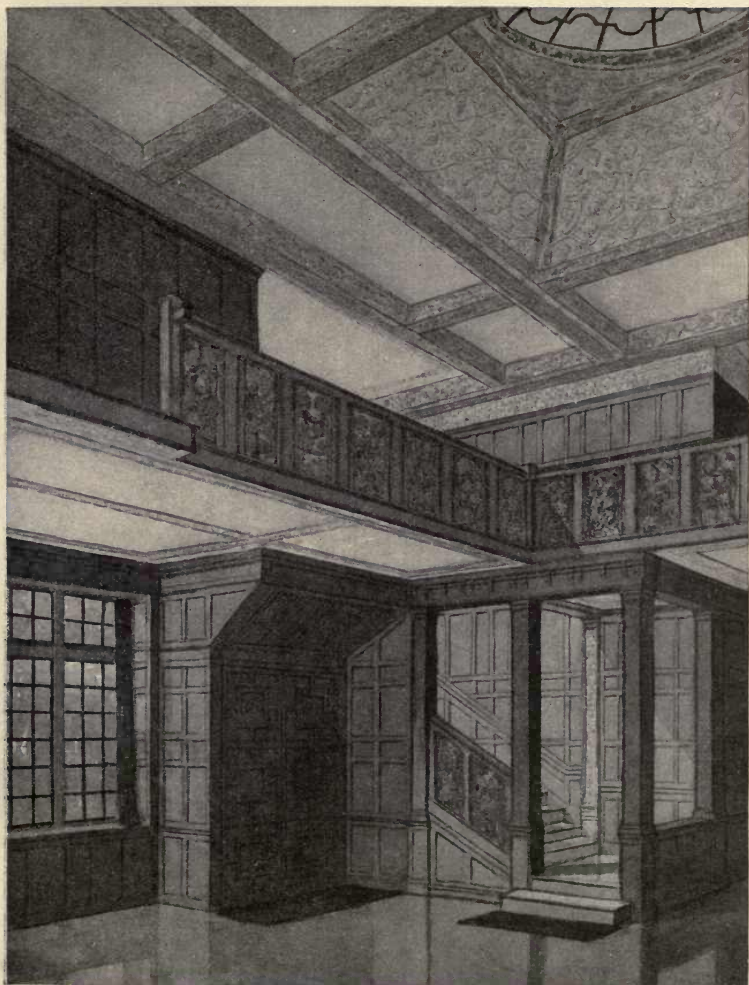
CYRIL A. FAREY, Architect.

Academy Architecture.



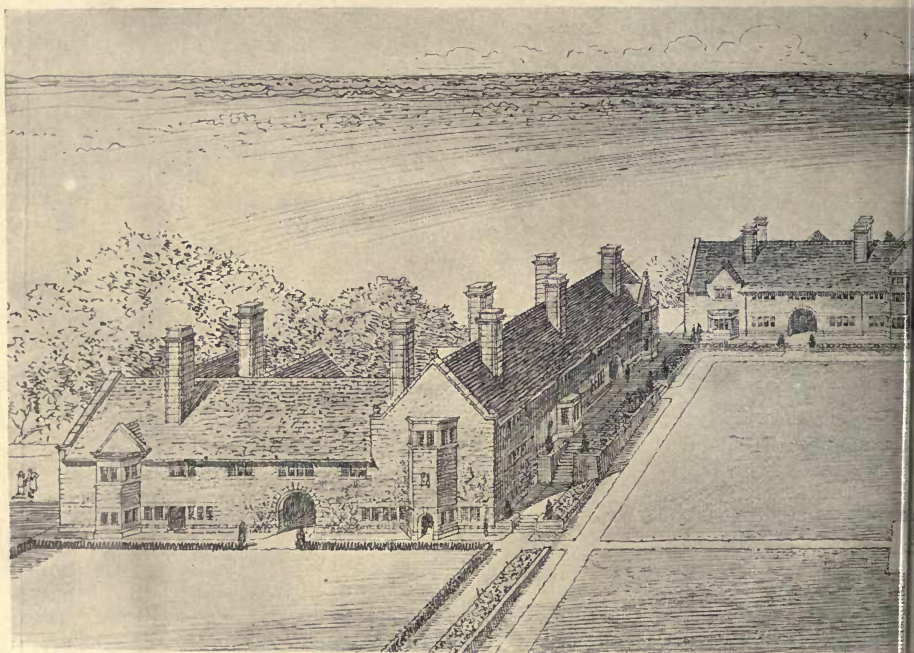
Sketch for Theatre, Charing Cross Road.

FRANK T. VERITY, Architect.



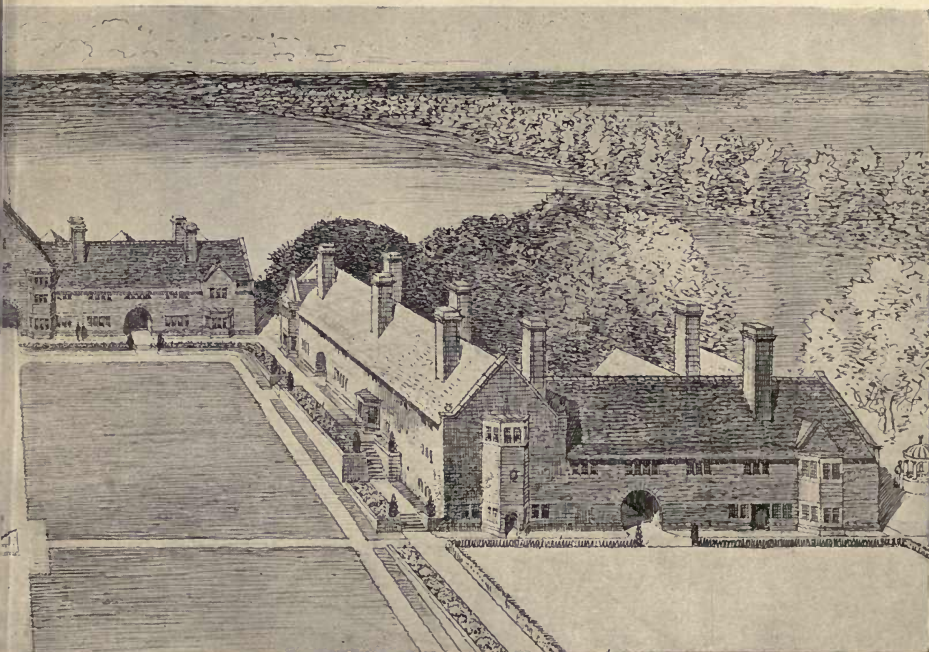
The Woodlands, Harrow: Plaster Ceiling in Hall.

G. P. BANKART, Architect.



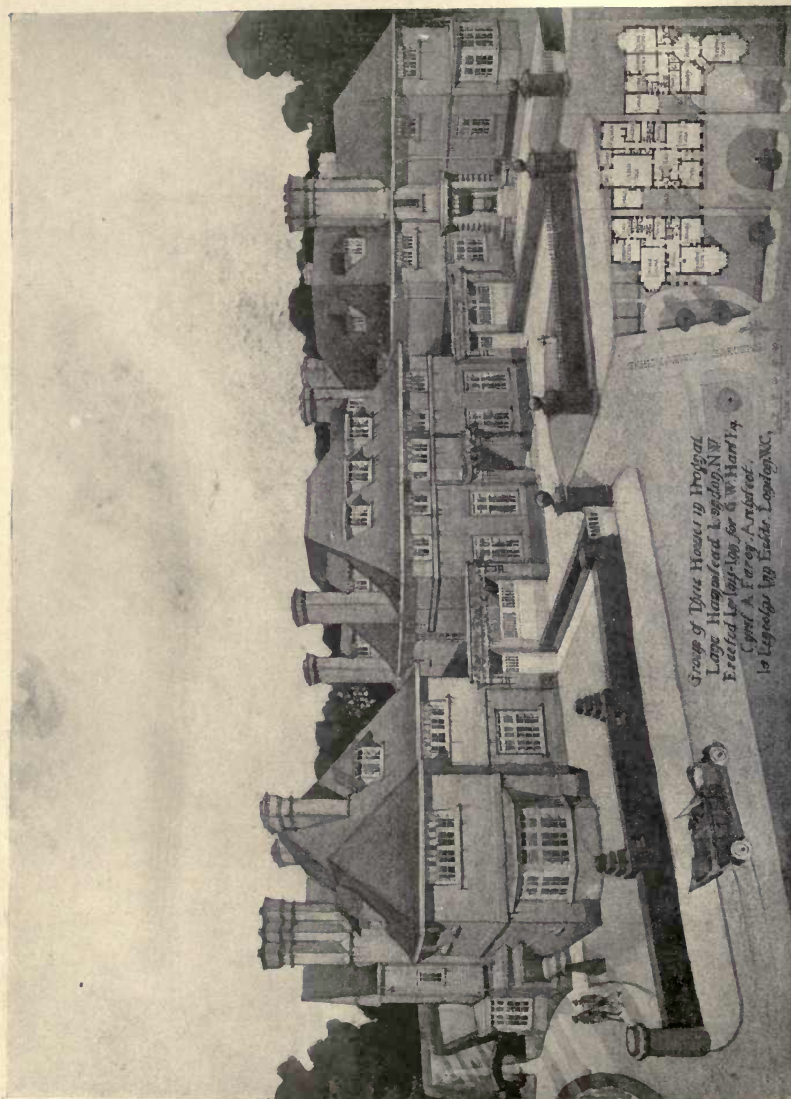
Groups of Proposed Sussex Cottages.

hitecture.



SIR ASTON WEBB, P.R.A., & MAURICE E. WEBB, Architects.

Academy Architecture.

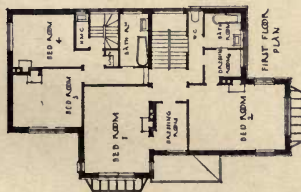
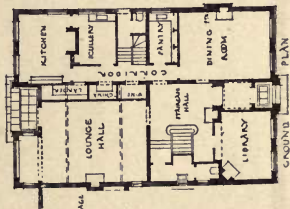
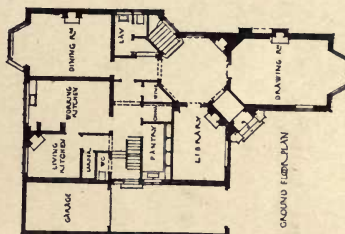


Group of Three Houses in Froggnal Lane, Hampstead, N.W.
Designed by Cyril A. Farey, Architect.
1914

Group of three Houses in Froggnal Lane, Hampstead, N.W.

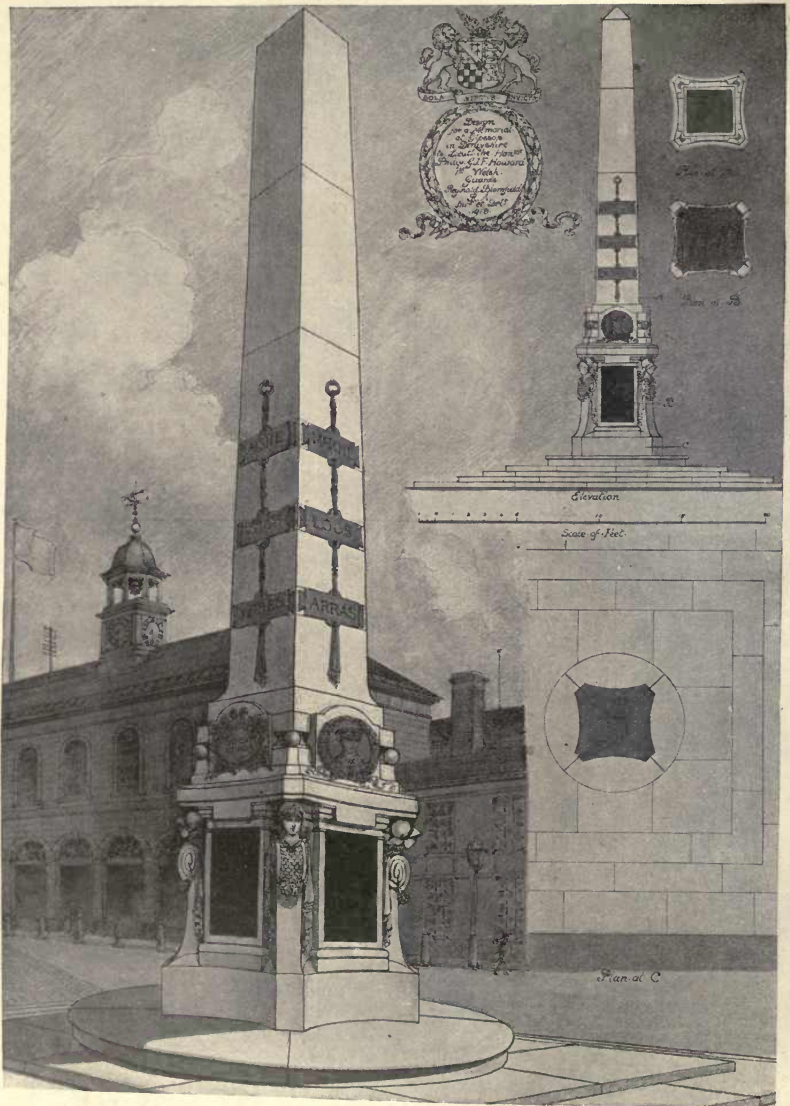
CYRIL A. FAREY, Architect.

Academy Architecture.



CYRIL A. FAREY, Architect.

Houses, Hampstead.



Design for Memorial at Glossop, Derbyshire.

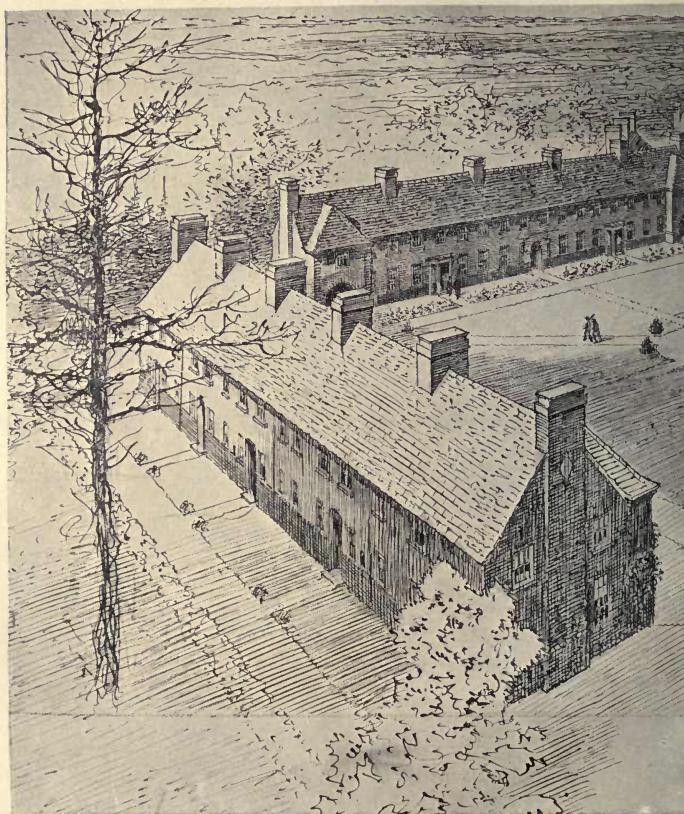
SIR REGINALD BLOMFIELD, R.A., Architect.

Academy Architecture.



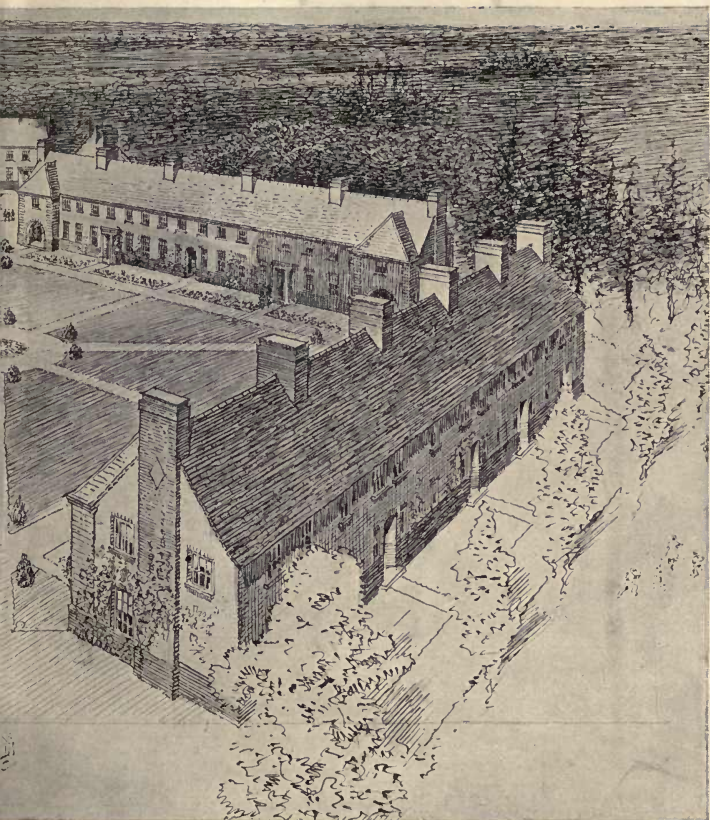
Seal Hollow, Sevenoaks : Hall.

M. H. BAILLIE SCOTT, Architect.



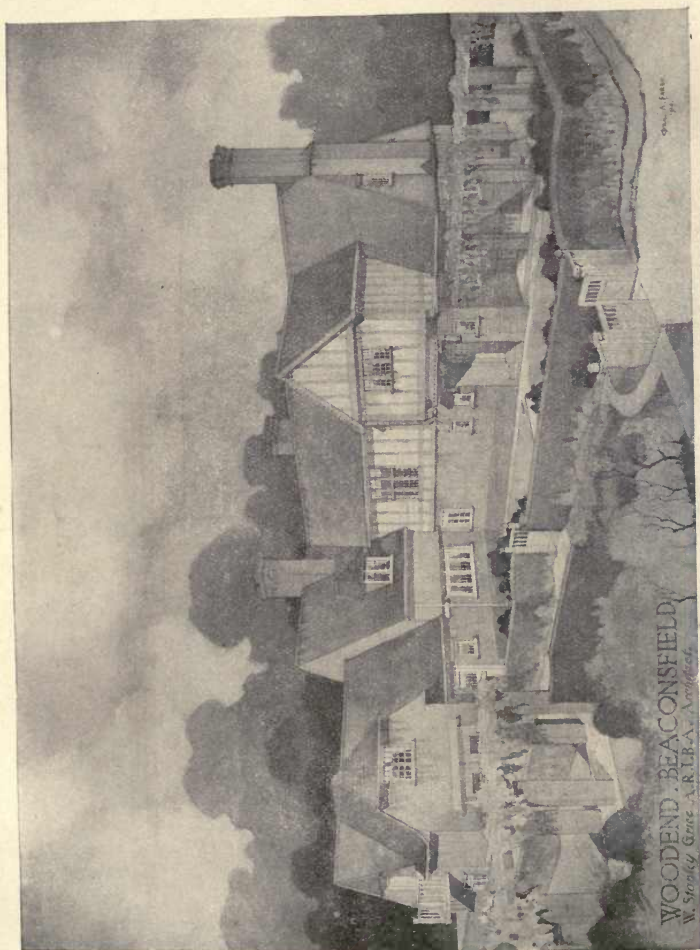
Groups of Proposed Sussex Cottages.

architecture.



SIR ASTON WEBB, P.R.A., & MAURICE E. WEBB, Architects.

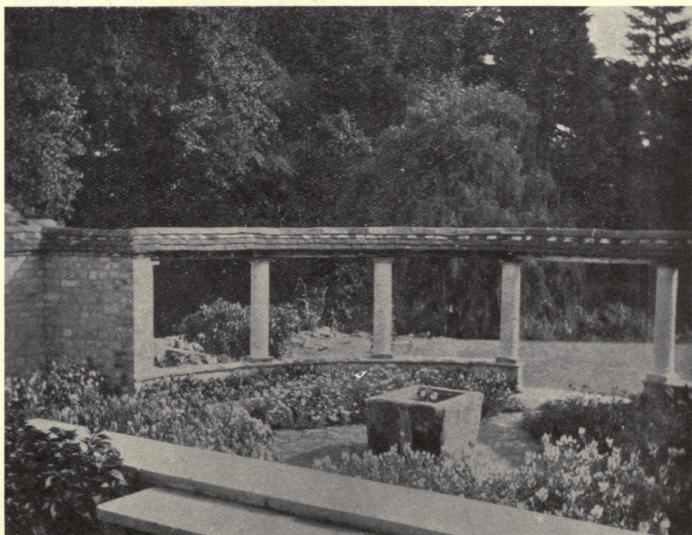
Academy Architecture.



W. STANLEY GRICE, Architect.

“Woodend,” Beaconsfield.

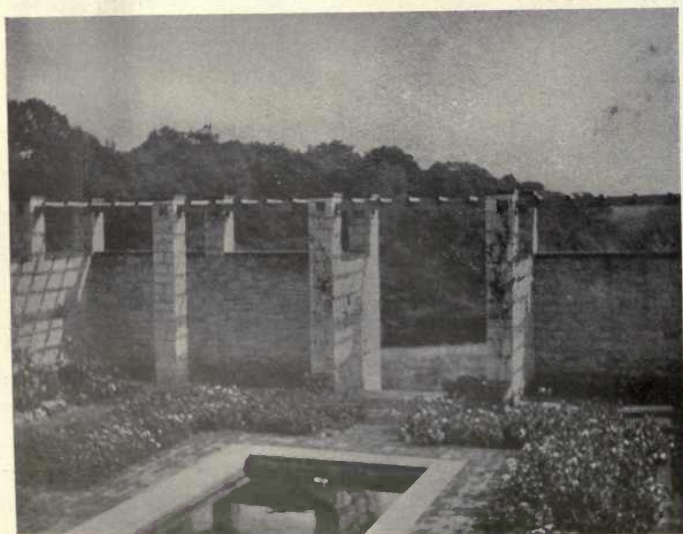
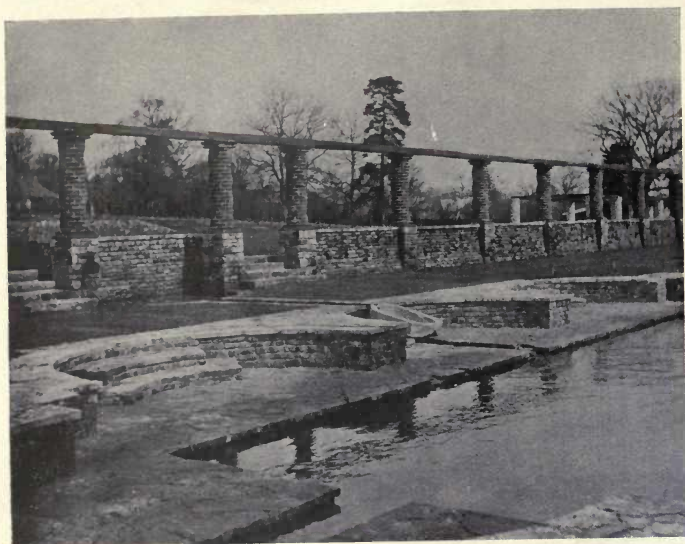
GARDEN ARCHITECTURE.



Design for a Garden.

UNSWORTH & TRIGGS, Architects.

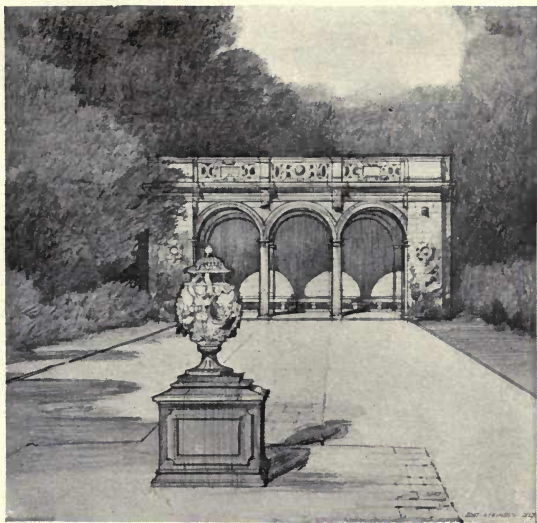
Garden Architecture.



Garden Pools,

UNSWORTH & TRIGGS, Architects.

Garden Architecture.



Garden House, Thornton Manor, Cheshire.

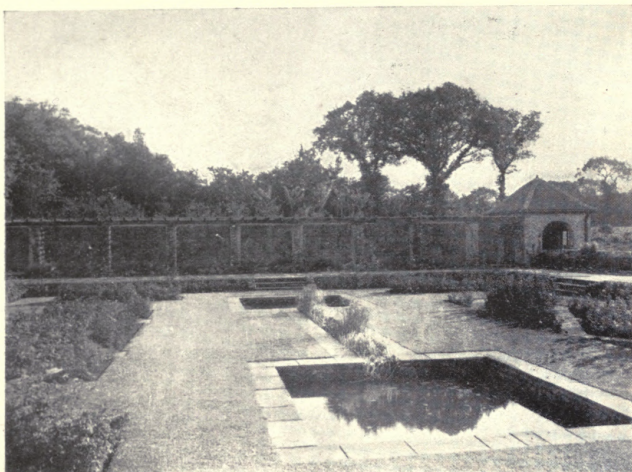
T. H. MAWSON & SONS, Architects.



The Long Walk, Cottage, Pine Ridge, Farnham.

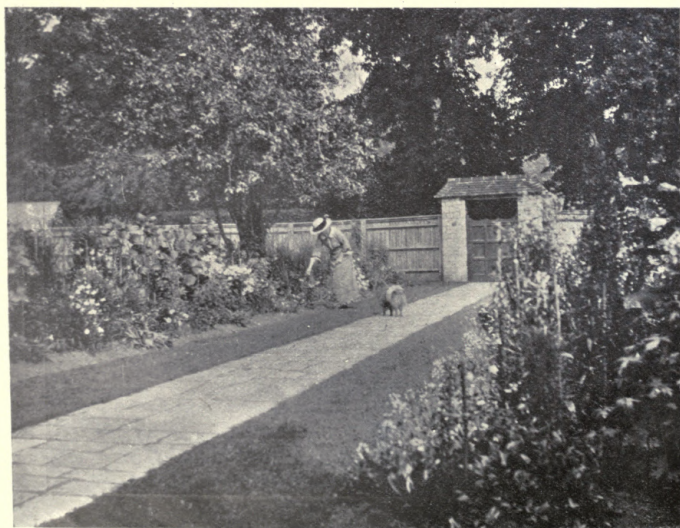
The late W. WATSON, Architect.

Garden Architecture.



Garden Pool.

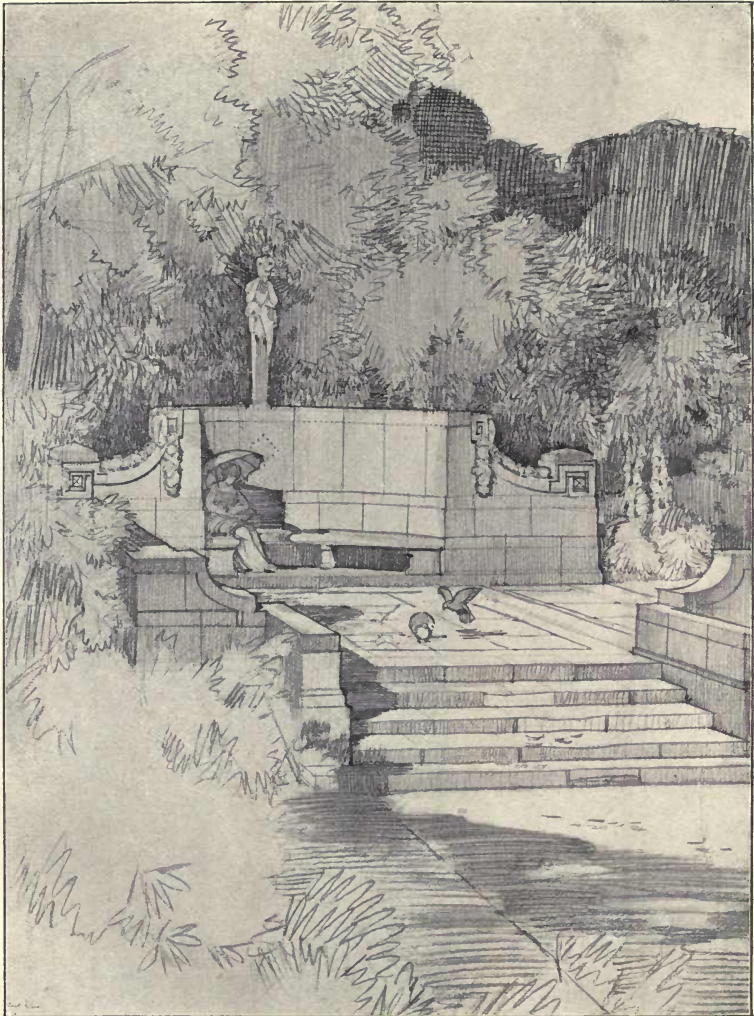
ROBERT ATKINSON, Architect.



Garden with Gate.

UNSWORTH & TRIGGS, Architects.

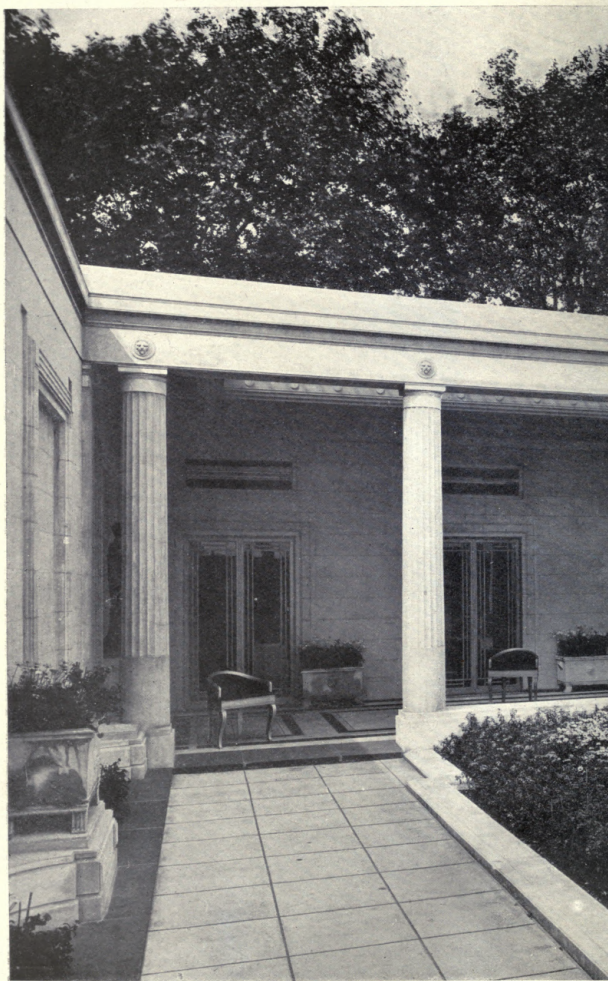
Garden Architecture.



Stone Garden Seat, "The Palace of Peace," The Hague.

THOMAS H. MAWSON, Architect.

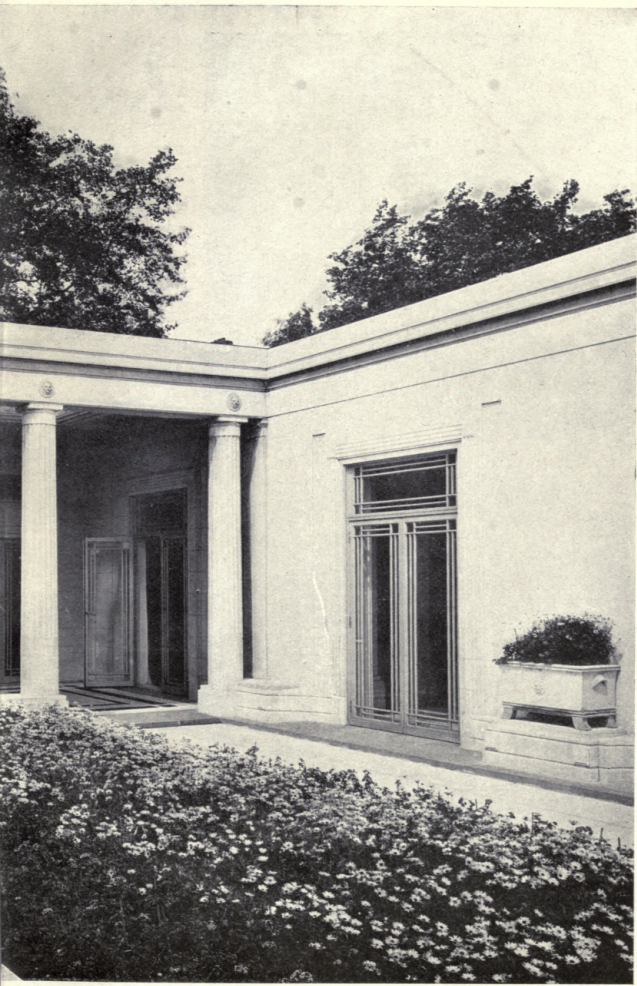
Reproduced by permission from *The Art and Craft of Garden Making*, Fourth Edition.



129, Grosvenor Road.

Electric Lighting: H. J. CASH &

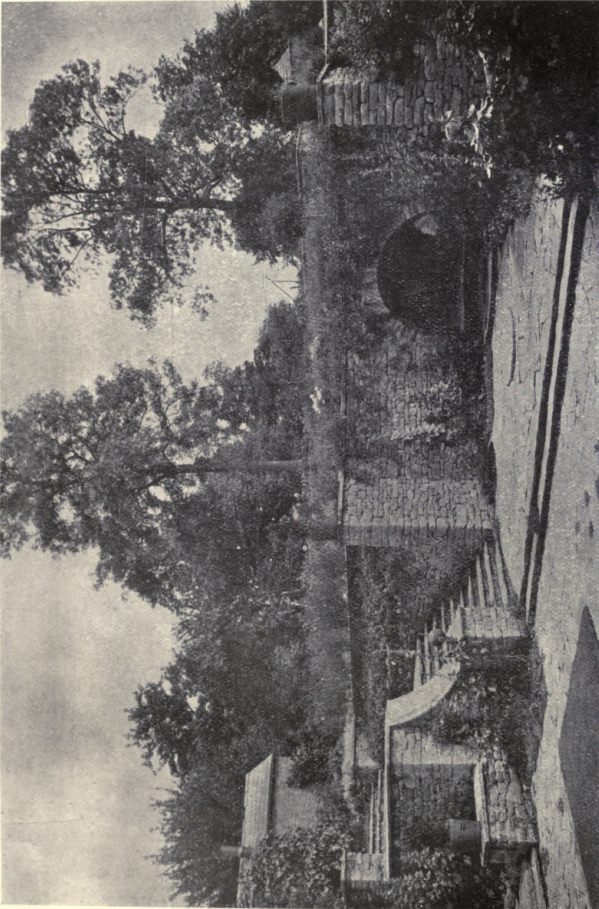
ecture.



G. I & A. GILBERT SCOTT, Architects.

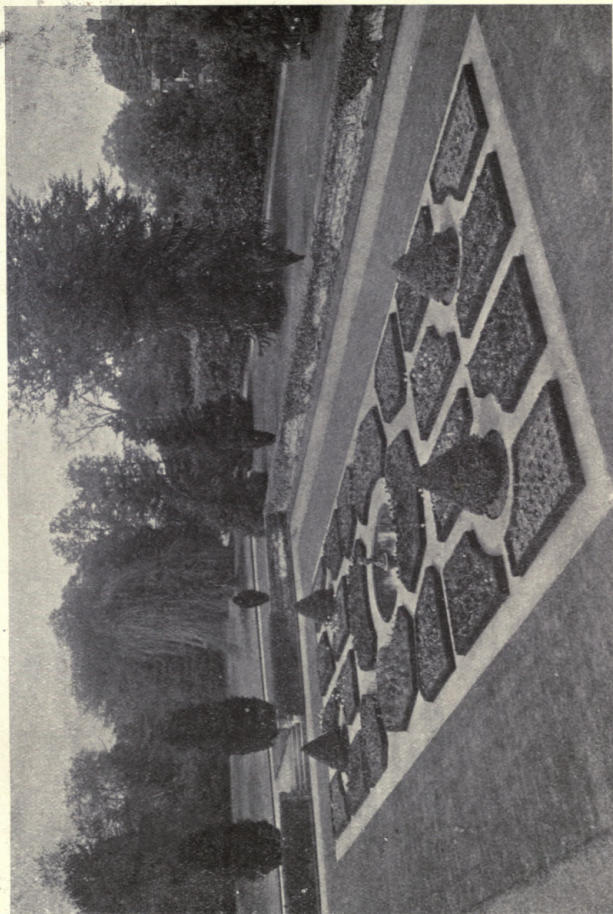
London, Caxton House, Westminster, S.W. 1.

Garden Architecture.



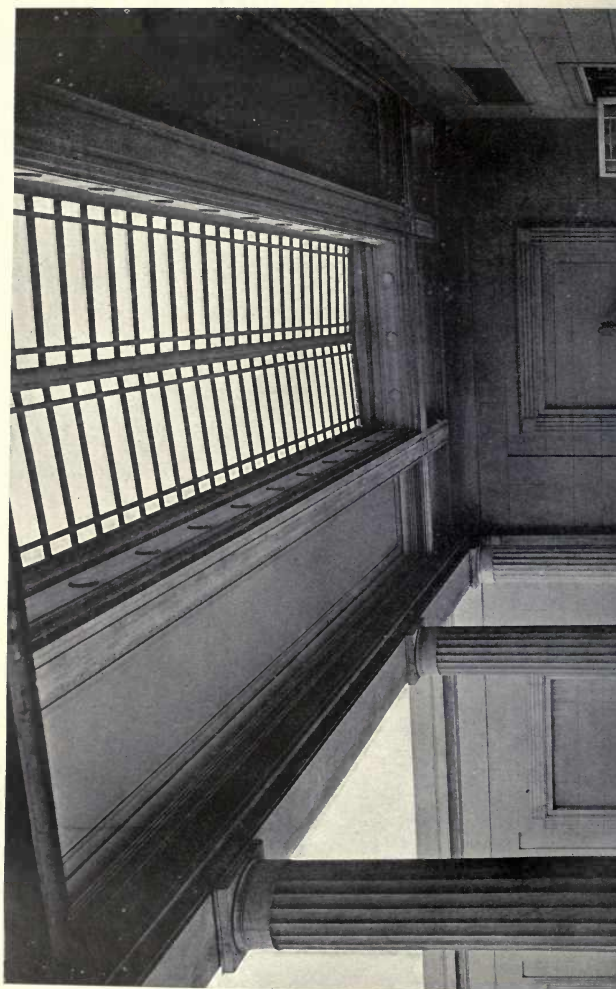
Garden, Sibford-Ferris, Banbury.

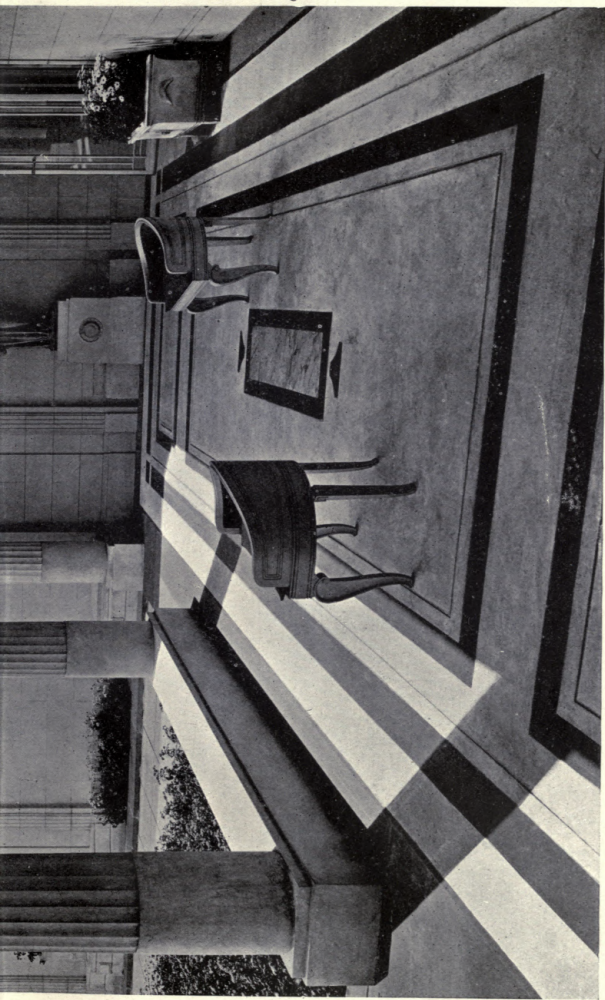
BAILLIE SCOTT, Architect.



Model Garden Lay-out.

UNSWORTH & TRIGGS, Architects.



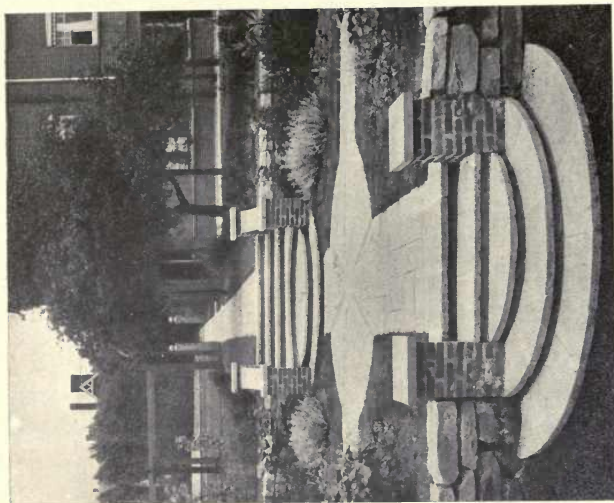


129, Grosvenor Road: The Loggia.

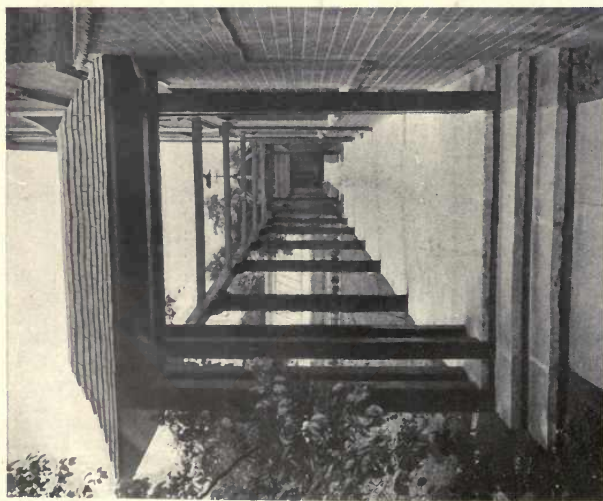
G. & A. GILBERT SCOTT, Architects.

Electric Lighting: H. J. CASH & Co., LTD., Caxton House, Westminster, S.W. 1.

Garden Architecture.

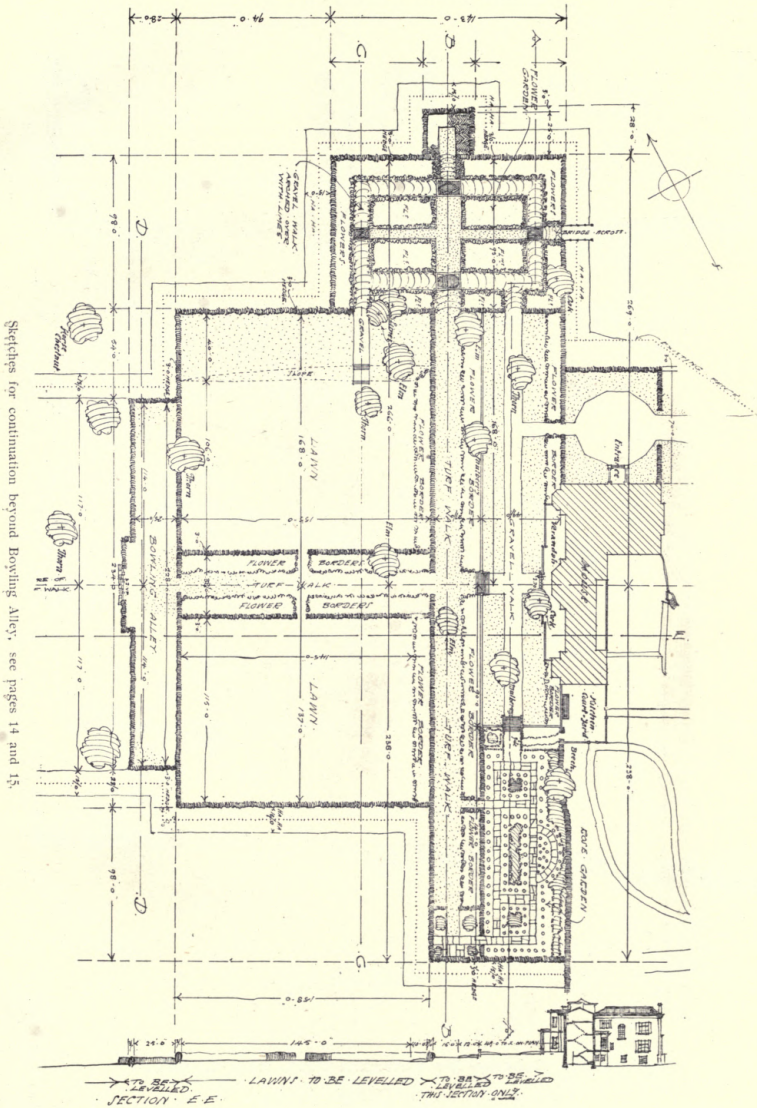


Looking across the Herbaceous Border.
W. ACWORTH, Architect.



Detail of Pergola.
Thornbank Garden Details.

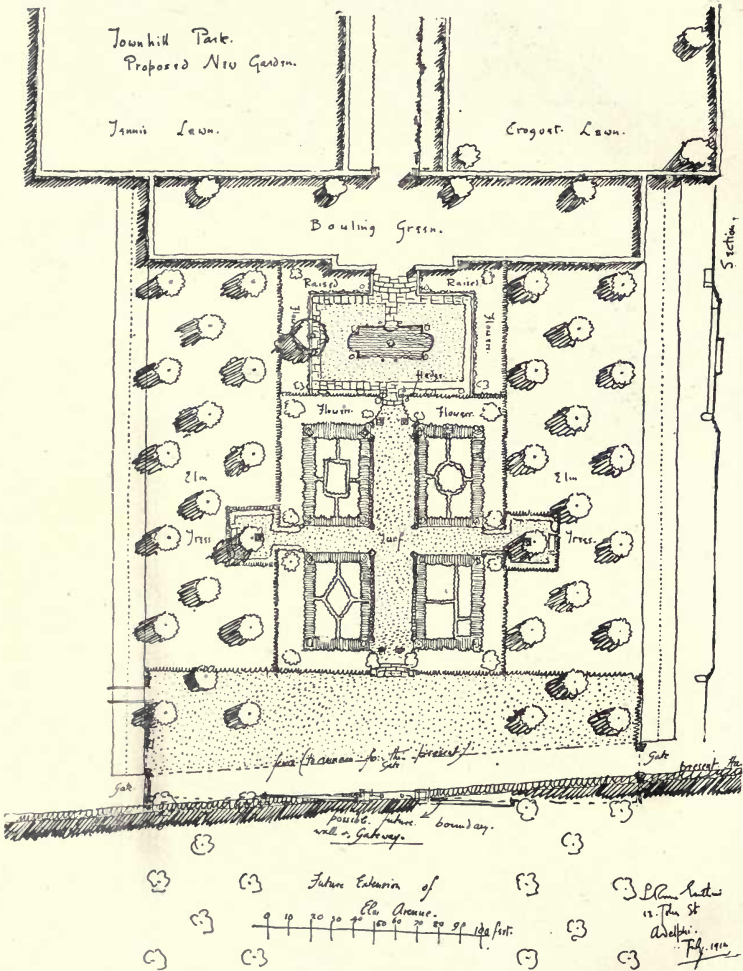
Garden Architecture.



Sketches for continuation beyond Bowling Alley; see pages 14 and 15.

Townhill Park New Garden.
CAPT. L. ROME GUTHRIE, Architect

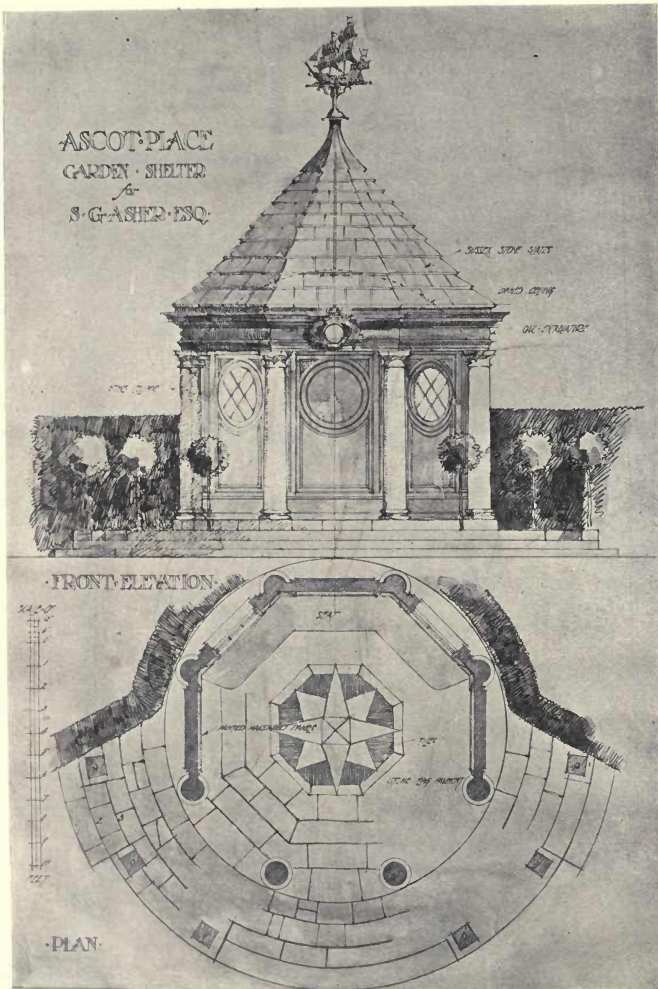
Garden Architecture.



Alternative Scheme for Townhill Park New Garden.

CAPT. L. ROME GUTHRIE, Architect.

Garden Architecture.



Ascot Place Garden Sketch.
CAPT. L. ROME GUTHRIE, Architect.

PUBLIC BUILDINGS, BANKS, OFFICES AND HOTELS



Police and Sessions Courts, Blackburn.

BRIGGS, WOLSTENHOLM, THORNELY, STONES, STONES & ATKINSON, Architects.

Heating, Hot Water and Ventilation : SAUNDERS & TAYLOR, Ltd., 43 Lower Mosley Street, Manchester.

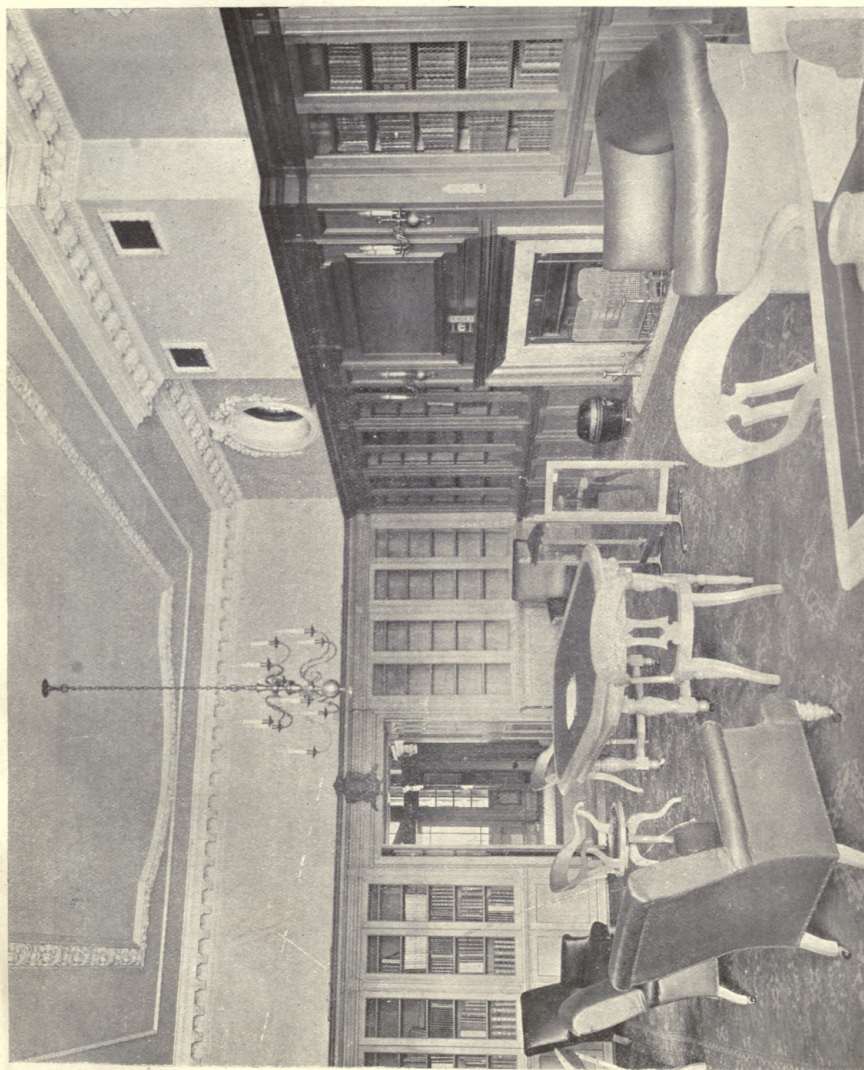
Cell Fittings : CHARLES SMITH, SONS & Co., Ltd., Deritend Bridge Works, Birmingham.

Electric Fittings, Ornamental Wrought Iron Work, etc. : GEORGE WRAGGE, Ltd., Wardry Works, Salford, Manchester.

Door Springs and Hinges : ROBERT ADAMS, 3-5 Emerald Street, Holborn, W.C. 1.

Photo : T. LEWIS, Ltd.

Public Buildings.



Council Offices Extension, Derby.

GEORGE C. COPESTICK, Architect.

Facing Bricks : G. TUCKER & SON, Ltd., Loughborough, Leicestershire.

Fire Grates and Mantels : GEORGE WENTR, Ltd., Rotherham.

Floors and Dadoes to Laboratories : BRUSH DOCKMANT CO., Ltd., 167 Strand, W.C.1.

Door and Window Furniture : CHARLES SMITH, Sons & Co., Ltd., Deritend Bridge Works, Birmingham.

Photo : B. KEENE.

Public Buildings.



Council Offices Extension, Derby.

GEORGE C. COPESTICK, Architect.

Facing Bricks : G. TUCKER & SON, Ltd., Loughborough, Leicestershire.

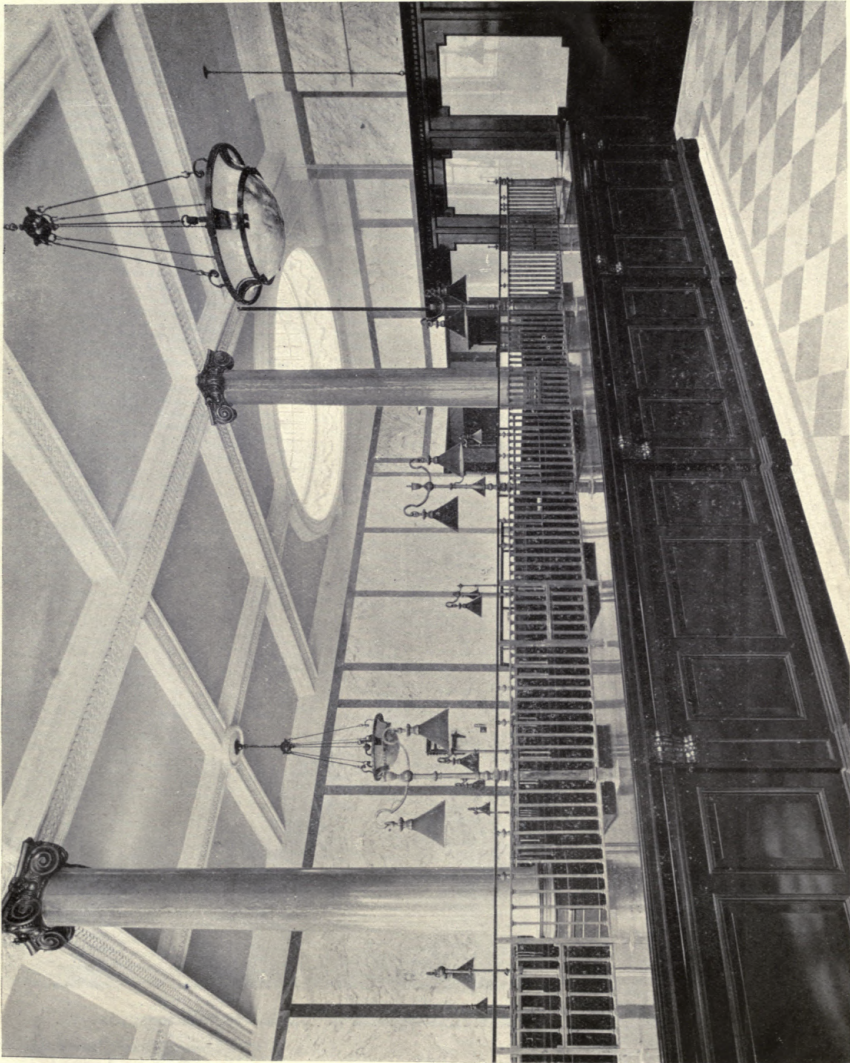
Fire Grates and Mantles : GEORGE WRIGHT, Ltd., Rotherham.

Floors and Dadoes to Laboratories : BRITISH DOLOMENT Co., Ltd., 167 Strand, W.C. 2.

Door and Window Furniture : CHARLES SMITH, Sons & Co., Ltd., Deritend Bridge Works, Birmingham.

Photo : B. KEENE.

Public Buildings, Banks.



National Provincial Bank, Wolverhampton.

Scagliola Column Filasters : BELLMAN, IVEY & CARTER, Ltd., Linholpe Street, Dorset Square, N.W. 1.
Counter Grilles : COLLEGE & BRIDGEN, Midland Works, Wolverhampton.
Granite Work : FENNING & Co., Ltd., Palace Wharf, Rainville Road, Hammersmith, W.

BROMLEY & WATKINS, Architects.



National Provincial Bank, Wolverhampton.

Scagliola Column Pilasters : BELLMAN, IV
Door Springs and Locks : COLLEDGE & I
Granite Work : FENNING & Co., Ltd, F
Lifts : WAYGOOD-OTIS, Ltd., Falmouth F

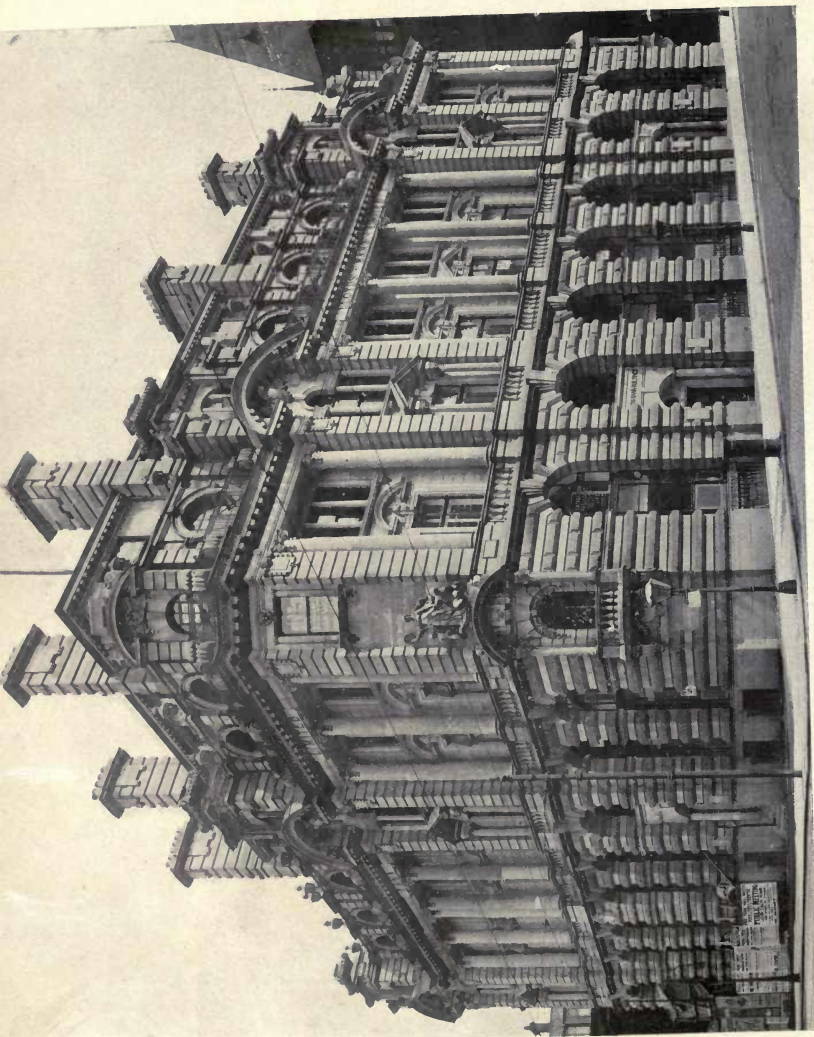
ings, Banks.



BROMLEY & WATKINS, Architects.

ER, Ltd., Linhope Street, Dorset Square, N.W. 1.
Midland Works, Wolverhampton.
rf, Rainville Road, Hammersmith, W.
on, S.E.

Public Buildings, Banks.



Lloyd's Bank, Manchester.

CHAS. HEATHCOTE & SONS, Architects.

Gates, Railings, Balconies, Desk Grilles, etc.: **H. W. CASHMORE & Co.,** Post Office Approach, Balham, S.W. 12.

Ironmongery: **CHARLES SMITH, SONS & Co., Ltd.,** Deritend Bridge Works, Birmingham.

The Revolving Doors are **SAMUEL ELLIOTT & Sons, Reading, Patent.**

Marble Work: **FENNING & Co., Ltd.,** Palace Wharf, Rainville Road, Hammersmith.

Victor Springs and Hinges: **ROBERT ADAMS, 3-5 Emerald Street, Holborn, W.C. 1.**

Grates and Cooking Plant: **S. FLAVEL & Co., Ltd.,** Leamington.

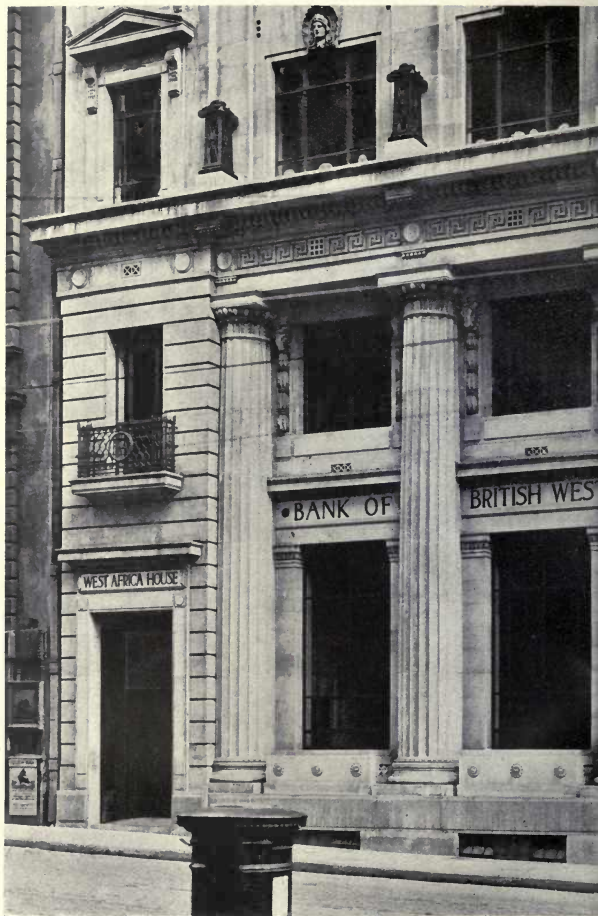
Public Buildings, Banks.



Lloyd's Bank, Manchester.

CHAS. HEATHCOTE & SONS, Architects.

Gates, Railings, Balconies, Desk Grilles, etc.: **H. W. CASHMORE & Co.,** Post Office Approach, Balham, S.W. 12.
Ironmongery: **CHARLES SMITH, SONS & Co., Ltd.,** Deritend Bridge Works, Birmingham.
The Revolving Doors are **SAMUEL ELLIOTT & SONS,** Reading, Patent.
Marble Work: **FENNING & Co., Ltd.,** Palace Wharf, Rainville Road, Hammersmith, W.
Door Springs: **ROBERT ADAMS,** 3-5 Emerald Street, Holborn, W.C. 1.
Grates and Cooking Plant: **S. FLAVEL & Co., Ltd.,** Leamington.



West Africa House, Liverpool.

Photo
ENTWISLE, THORPE & Co.

Heating and Ventilation : SAUNDERS & TAYLOR, 43 L
Metal Casements : WILLIAMS, GAMON & Co., Kaleyar
Scagliola Column Pilasters : BELLMAN, IVEY & CARTER
Tiles : CRAVEN, DUNNILL & Co., Jackfield, Shropshire
Door Springs : ROBERT ADAMS, 3-5 Emerald Street, F
Sanitary Fittings, Plumbing, Hot Water Supply, Decora
Art Metal Work : GEORGE WRAGGE, Ltd., Wardry V

s, Banks.



BRIGGS, WOLSTENHOLM & THORNELY, Architects.

osley Street, Manchester.

ks, Chester.

Linhope Street, Dorset Square, N.W. J.

W.C. 1.

c.: WM. GRIFFITHS, SONS & CROMWELL, Ltd., 22 Upper Duke Street, Liverpool.

Salford, Manchester.

Public Buildings, Hotels.



Regents Palace Hotel.

H. TANNER, F. J. WILLS, and the late W. J. ANCELL, Architects.

Lifts : WAYGOOD-OTIS, Ltd., Falmouth Road, London, S.E.

"Marmo" : LEEDS FIRECLAY Co., Ltd., 167 Strand, W.C. 2, and Wortley, Leeds.

Window Gearing, etc. : ROBERT ADAMS, 3-5 Emerald Street, Holborn, W.C.

Public Buildings, Hotels.



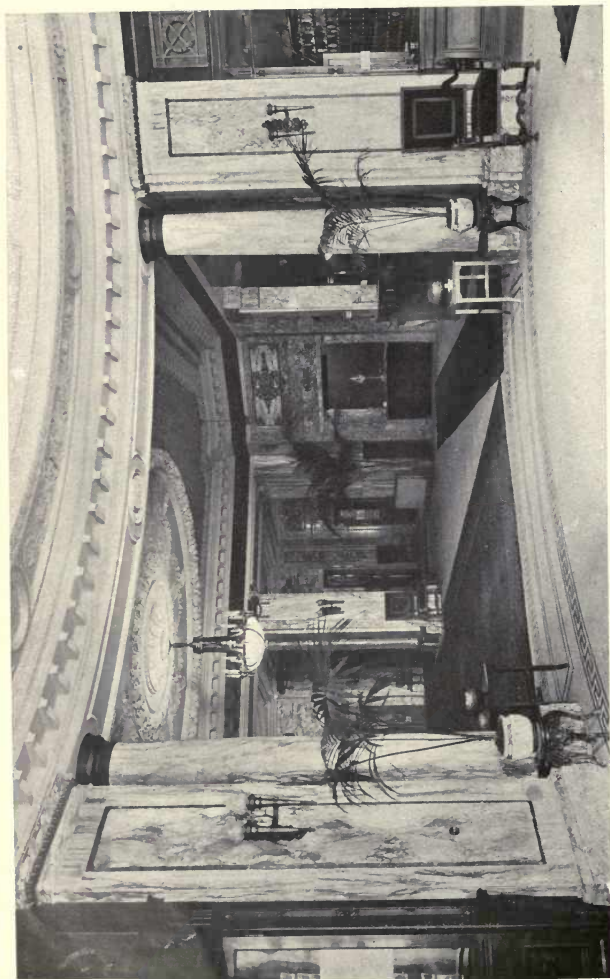
Regents Palace Hotel.

H. TANNER, F. J. WILLS, and the late W. J. ANCELL, Architects.

Lifts : WAYGOOD-OTIS, Ltd., Falmouth Road, London, S.E.

"Marmo" : LEEDS FIRECLAY Co., Ltd., 167 Strand, W.C. 2, and Wortley, Leeds.

Window Gearing, etc. : ROBERT ADAMS, 3-5 Emerald Street, Holborn, W.C.



Regents Palace Hotel: The Lounge.

H. TANNER, F. J. WILLS, and the late W. J. ANCELL, Architects.

Lifts: WAYGOOD-ORTIS, Ltd., Falmouth Road, London, S.E.

"Marmo": LEEDS FIRECLAY Co., Ltd., 167 Strand, W.C. 2, and Wortley, Leeds.

Window Gearing, etc.: ROBERT ADAMS, 3-5 Emerald Street, Holborn, W.C.

Public Buildings, Offices.



Imperial Buildings, Kingsway: The Board Room.

METCALF & GRIEG, Architects.

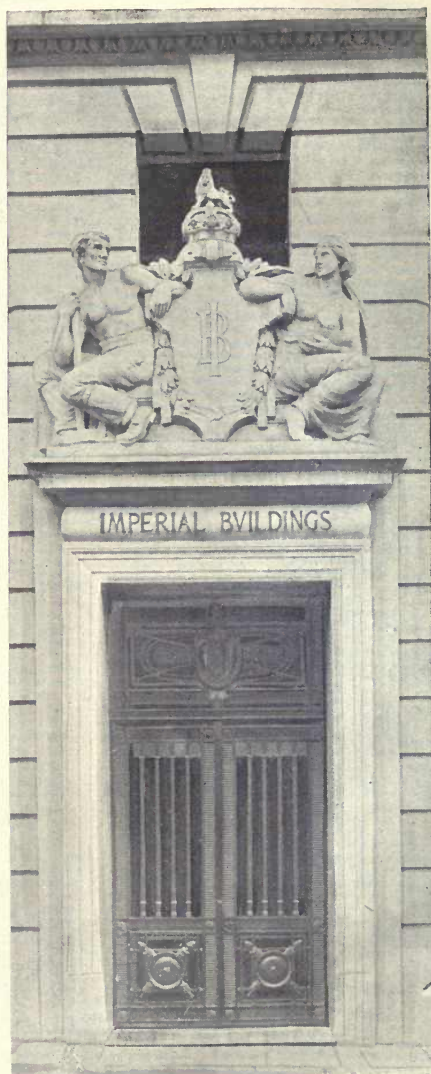
Builders and Contractors: T. H. KINGERLEE & SONS, 35 Queen Street, Oxford; London Depot, Unbridge Road, Shepherd's Bush, W.
Magna Electric Time System installed throughout by the MAGNETA TIME Co., Ltd., 14-16 Carteret Street, S.W. 1.

Photo: TELLIA CAMERA Co

Public Buildings, Offices.



Imperial Buildings, Kingsway.



METCALF & GREIG, Architect.

Builders and Contractors : T. H. KINGERLEE & SONS, 35 Queen Street, Oxford ; London Depot, Uxbridge Road, Shepherd's Bush, W.
Magneta Electric Time System installed throughout by the MAGNETA TIME Co., Ltd., 14-16 Carteret Street, Westminster, S.W. 1.

Photo : TELLIA CAMERA Co.



By APPOINTMENT.

LIFTS—

A MODERN
NECESSITY,—
SAVE TIME,—
SAVE ENERGY

EFFICIENCY
SAFETY . .
RELIABILITY
QUICKNESS

For information apply to the Makers,

WAYGOOD-OTIS LTD.

ESTABLISHED 86 YEARS.

FALMOUTH ROAD, S.E. 1.

'PHONE—NIGHT & DAY—4000 HOP.

ELLIOTT & SONS READING LTD.

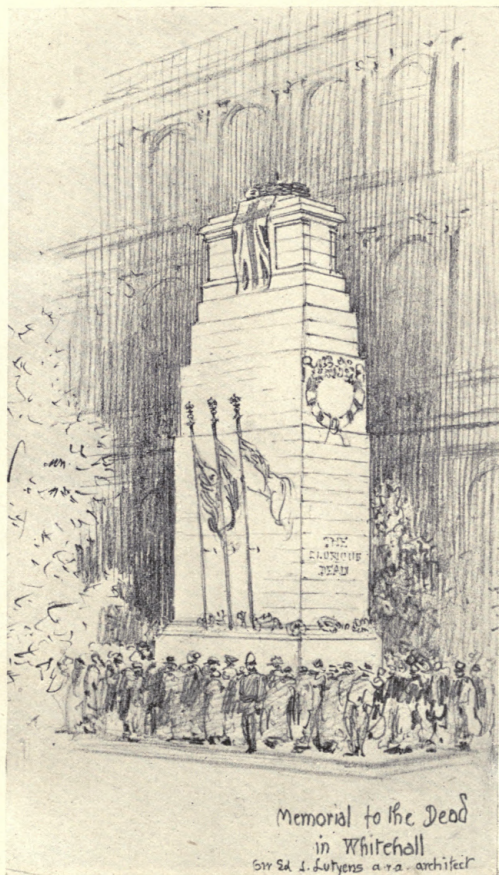


MEMORIAL PANELLING.

ST. PAUL'S CHURCH, LAMBETH.

MEMORIALS
CHURCH WOODWORK OF ALL DESCRIPTIONS
DESIGNS AND ESTIMATES FREE
CARVINGS
IN THE EARLY ENGLISH AND GOTHIC STYLES

MONUMENTS AND MEMORIALS

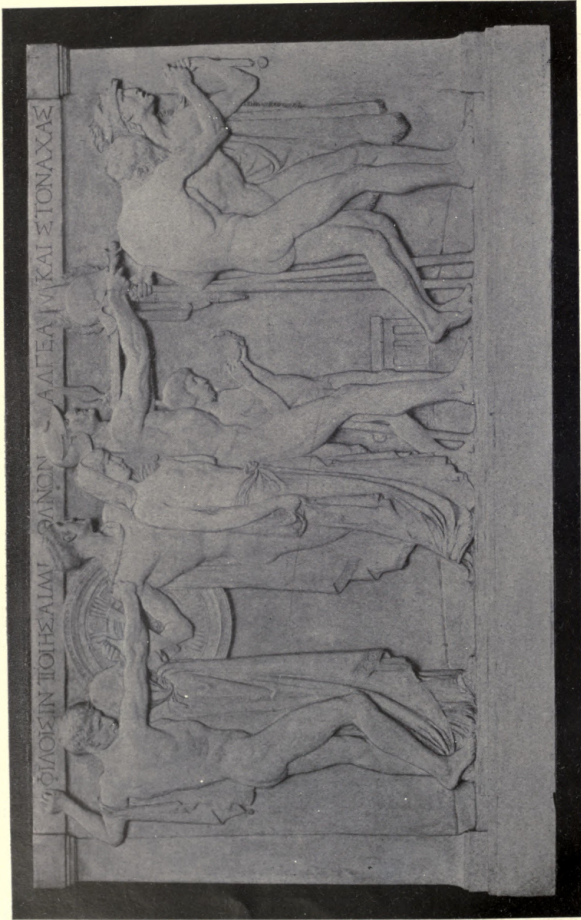


Memorial to the Dead in Whitehall: Cenotaph.

SIR EDWIN L. LUTYENS, A.R.A., Architect.

Sketch by RAFFLES DAVISON.

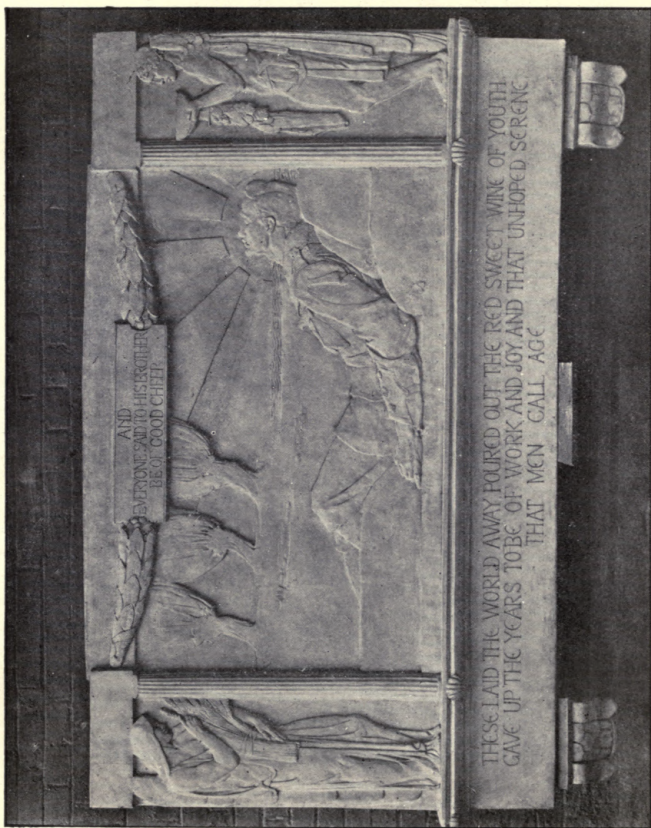
Monuments and Memorials.



GILBERT LEDWARD, Sculptor.

The Mourners.

Monuments and Memorials.



A Relief erected at Aldeburgh, Suffolk.

By GILBERT BAYES, Sculptor.

Monuments and Memorials.



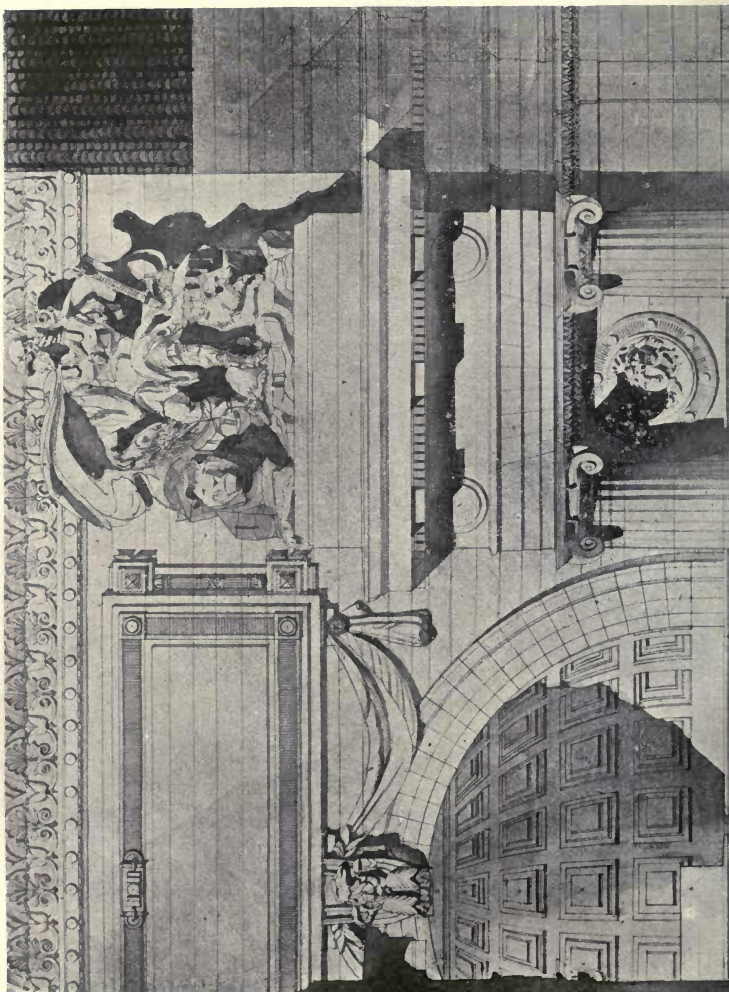
Figure of Industry: William Whiteley Memorial.

SIR GEORGE FRAMPTON, R.A., Sculptor.

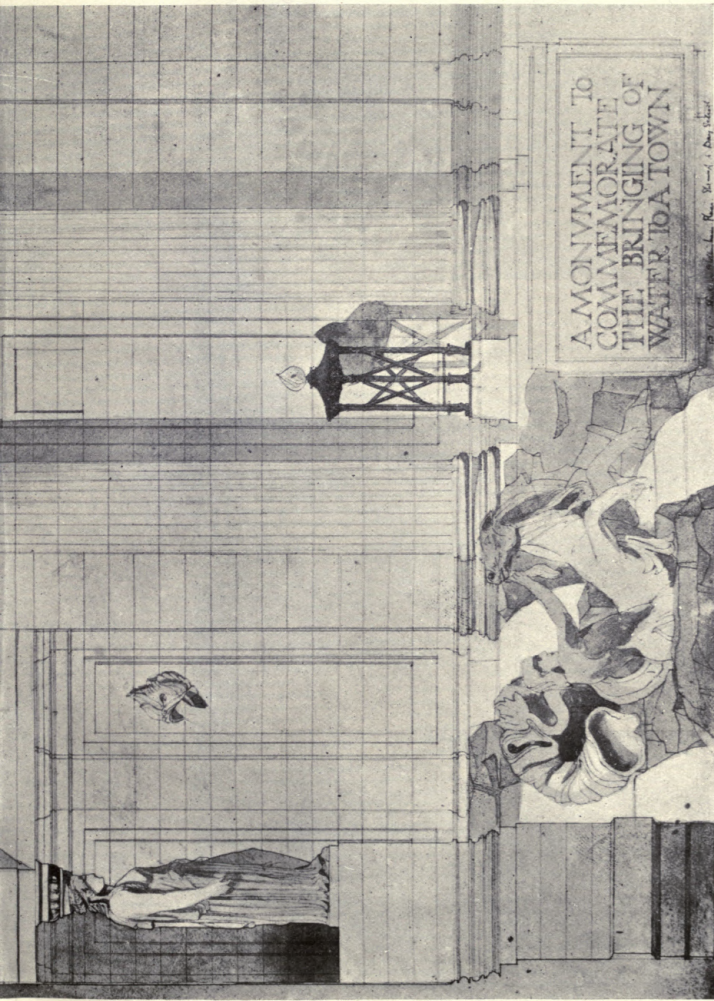
Monuments and Memorials.



Memorial to Dr. Barnardo: Crowning Group.
SIR GEORGE FRAMPTON, R.A., Sculptor.



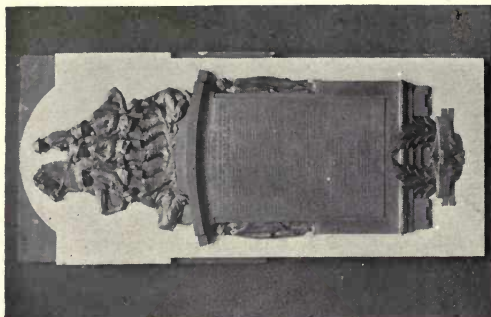
monials.



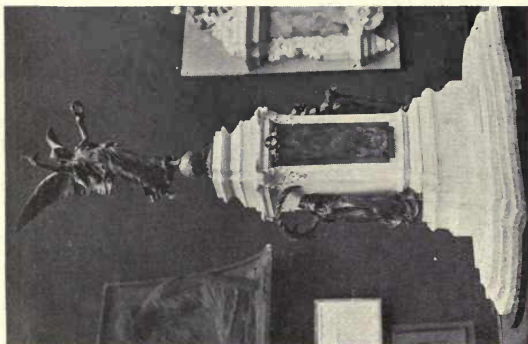
A Monument to Commemorate the Bringing of Water to a Town.

The late R. M. HAIG PHILP, Architect.

Monuments and Memorials.



Design for a Bronze Tablet.
W. REID DICK, Sculptor.



A Model of a Memorial.
H. C. FEHR, Sculptor.



A Memorial Roll of Honour.
ALFRED DRURY, R.A., Sculptor.

Monuments and Memorials.



Salisbury Memorial.

SIR GEORGE FRAMPTON, R.A., Sculptor.

Monuments and Memorials.



A Model of a Proposed Memorial.

W. REID DICK, Sculptor.



A Memorial for Cavalry or Mounted Troops.

ADRIAN JONES, Sculptor.

Monuments and Memorials.



Oak Panelling: St. Paul's Church, Lambeth.

Designed by W. HAMILTON, Artist.

Executed by SAMUEL ELLIOTT & SONS (Reading), Ltd.

Monuments and Memorials.



Gilbert Memorial Tablet, Embankment, London.

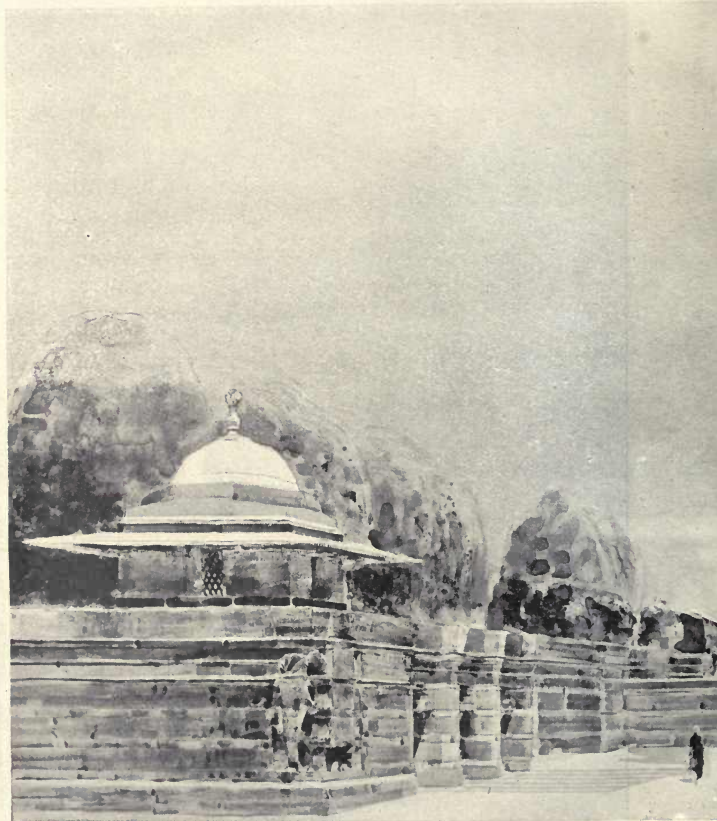
SIR GEORGE FRAMPTON, R.A., Sculptor.

Monuments and Memorials.



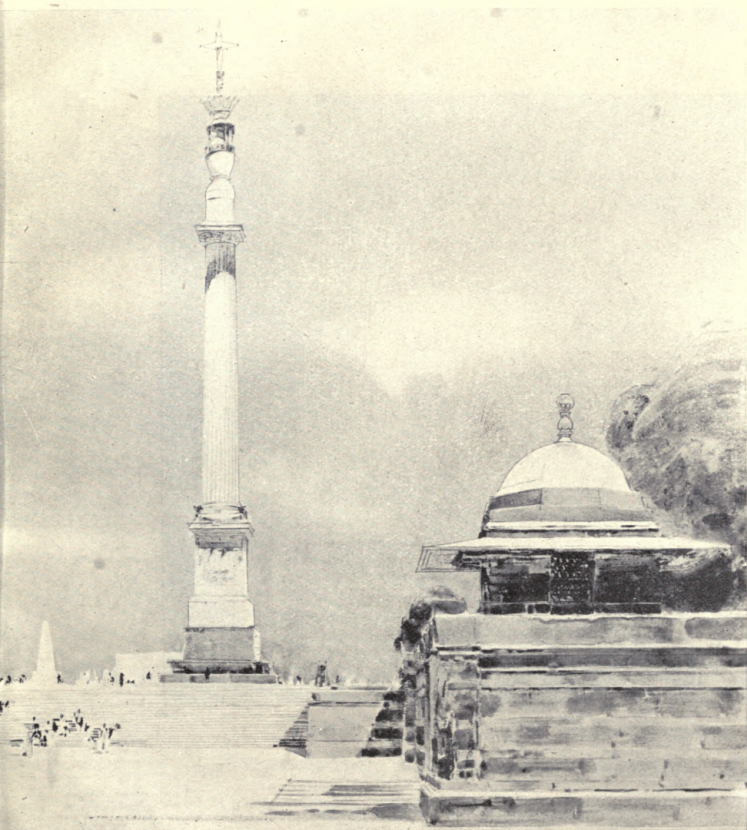
St. George.

JOHN ANGEL, Sculptor.



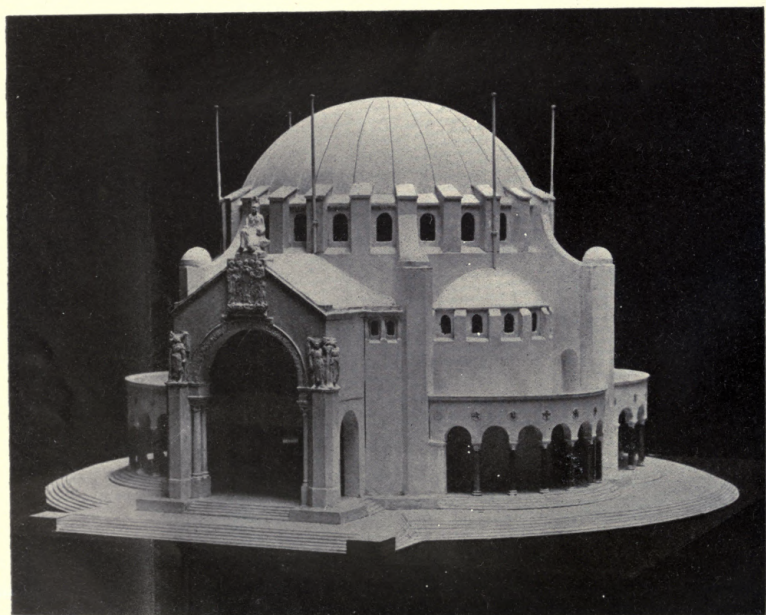
Commemoration Column, New Delhi.

Memorials.



SIR EDWIN L. LUTYENS, A.R.A., Architect.

Monuments and Memorials.



Pantheon of the Five Dominions.

Model of a Design for a War Memorial.

ROBERT W. S. WEIR, Architect.

PRELIMINARY ANNOUNCEMENT

A SELECTION OF ORIGINAL PHOTOGRAPHS
OF RECENT

American Architectural Details

—BY—

ROBERT ATKINSON, F.R.I.B.A.,

PRINCIPAL OF THE ARCHITECTURAL ASSOCIATION
ARCHITECTURAL SCHOOL, LONDON

ONE HUNDRED FULL-PAGE ILLUSTRATIONS

The Book will contain 100 Full-Page Illustrations reproduced in the best style from Original Photographs taken by the Author during his recent tour in the United States of America and California.

Details on the following subjects will be included :—

**Public and Private Gardens, Street and Town-Planning
Accessories, Details of Public Buildings, Banks, &c.**

The Author, having had due regard for existing publications, has photographed details which have hitherto not been illustrated, thus a unique collection of fresh material is offered to the Profession.

It is hoped to publish the Book at £1 1s. 0d.

Pre-publishing Subscription - price 15s. 6d.

Trade Terms on Application.

It is to be hoped that all those interested in the production of the above unique Publication will avail themselves of the Subscription Terms, and send an early notification to the Publisher. Prospectus and Subscription Forms on application.

Publisher—A. E. MARTIN-KAYE, 44, DOUGHTY STREET, LONDON, W.C.1.

(Proprietor of ACADEMY ARCHITECTURE).

SIMSON & Co. L^{TD.}

Account Book & Envelope Manufacturers
Bookbinders Die-Stampers Rulers &c.

If you want to create a good impression upon Customers, let all your Printing be executed in type that is pleasant to read. We can supply you with the right sort. Our Works are well equipped, and we undertake the

P R I N T I N G of
Fine Art and
Trade Catalogues
Booklets □ Circulars
Brochures □ Cards
Folders □ Memos
Programmes □ Etc.

IT WILL PAY YOU TO RING US UP for any class of Advertising Literature or Stationery. Our Telephone Numbers are **76 Hertford** and **7687 Avenue** (London Office), and we shall be pleased to answer any enquiries, or a representative will wait upon you

COLOUR PRINTING A SPÉCIALITÉ

Market Place, Hertford

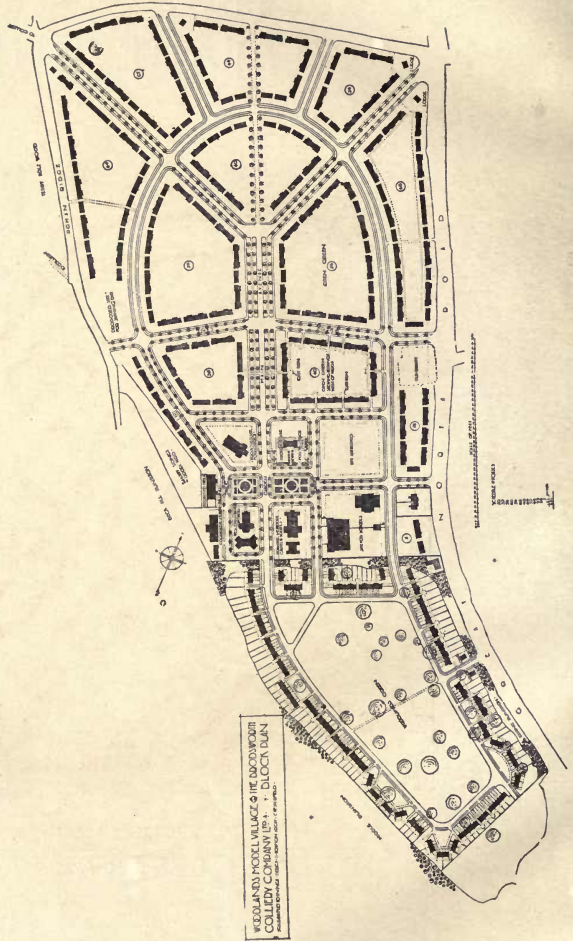
COTTAGE HOMES



Woodlands Model Village.

P. B. HOUFTON, Architect.

Cottage Homes.

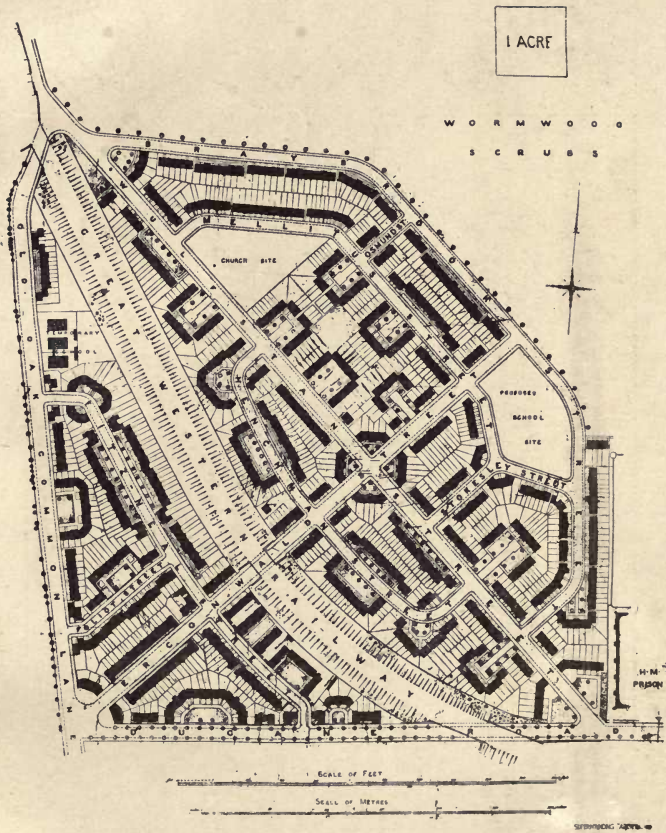


Woodlands Model Village.

P. B. HOUFTON, Architect.

Cottage Homes.

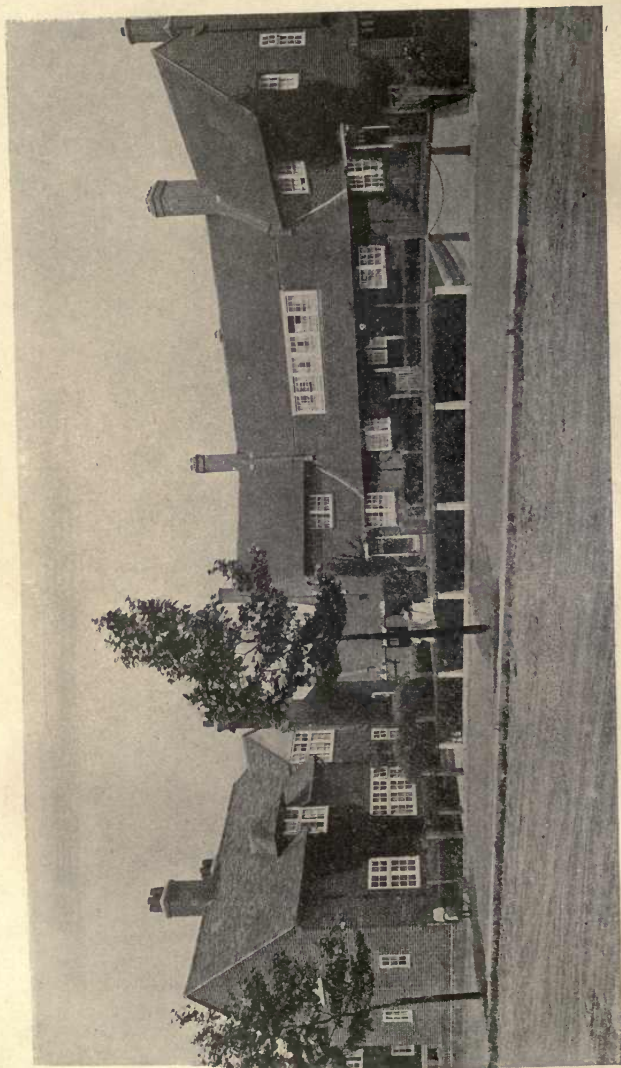
L.C.C. OLD OAK ESTATE



London County Council: Old Oak Estate.

W. E. RILEY, Architect.

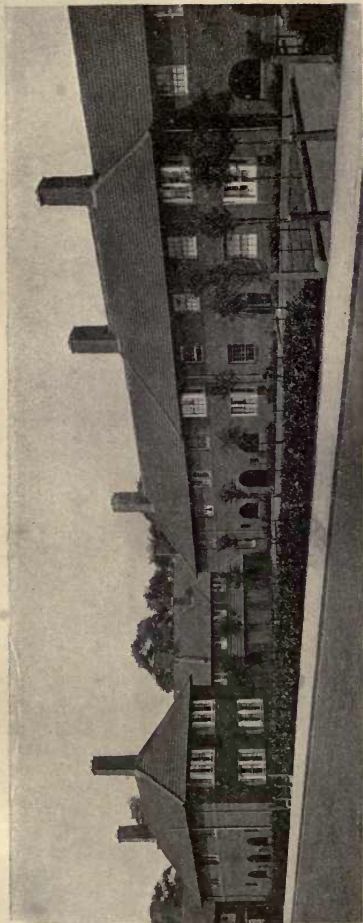
Cottage Homes.



Cottages : Ducane Road.

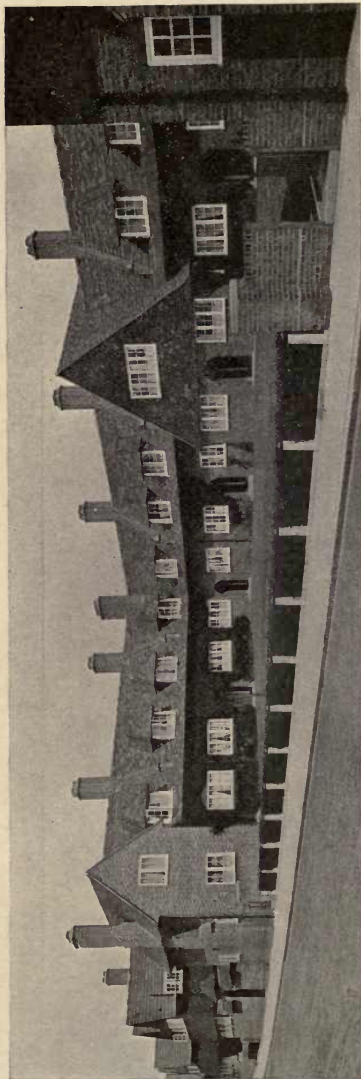
W. E. RILEY, Architect.

Cottage Homes.



Cottages: Foliot Street, Old Oak Estate.

W. E. RILEY, Architect.



Cottages: Fitz-Neal Street, Old Oak Estate.

W. E. RILEY, Architect.

(Plans see page 10).



Old Oak Common Lane.

(Plans

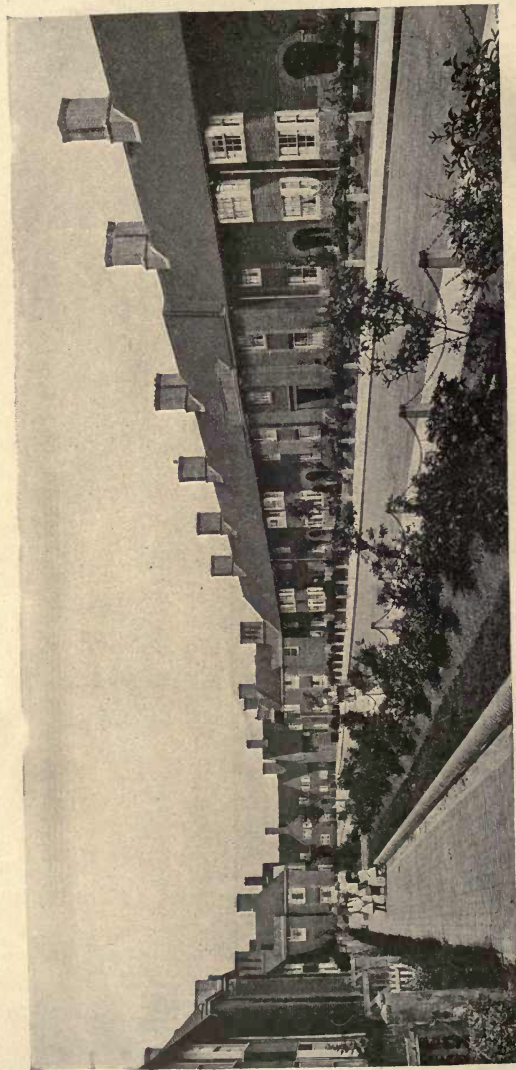
omes.



10 and 11).

W. E. RILEY, Architect.

Cottage Homes.

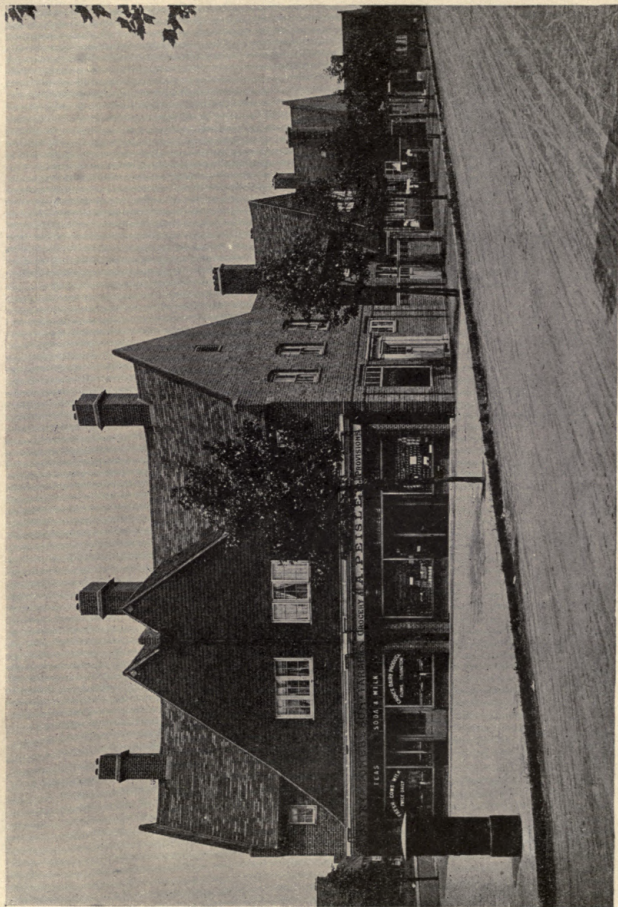


W. E. RILEY, Architect.

Cottages: Fitz-Neal Street, Old Oak Estate.

(Plans see page 10).

Cottage Homes.

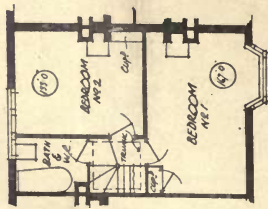


Shop : Ducane Road.

W. E. RILEY, Architect.

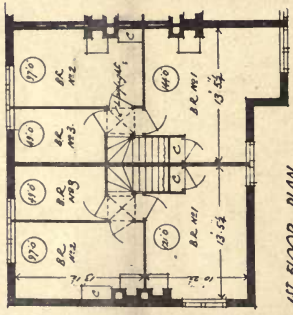
Cottage Homes.

FITZNEAL STREET

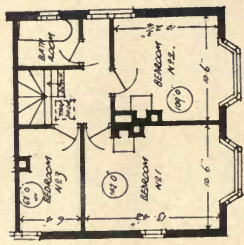


1ST FLOOR PLAN

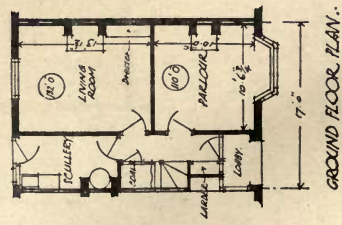
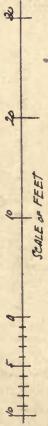
FOLIOT STREET & OLD OAK COMMON LANE.



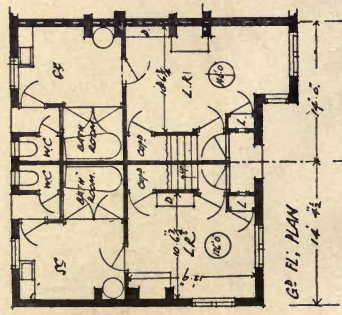
1ST FLOOR PLAN.



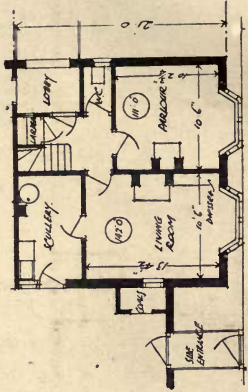
1ST FLOOR PLAN



GROUND FLOOR PLAN.



2^D FL. PLAN

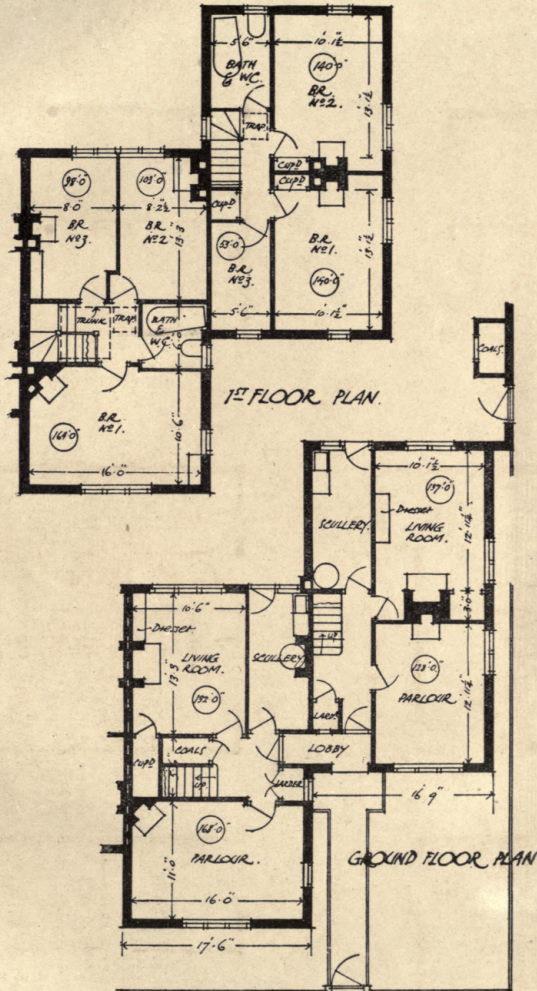


GROUND FLOOR PLAN

Cottages: Plans. Fitz-Neal and Foliot Streets and Old Oak Common Lane.

W. E. RILEY, Architect.

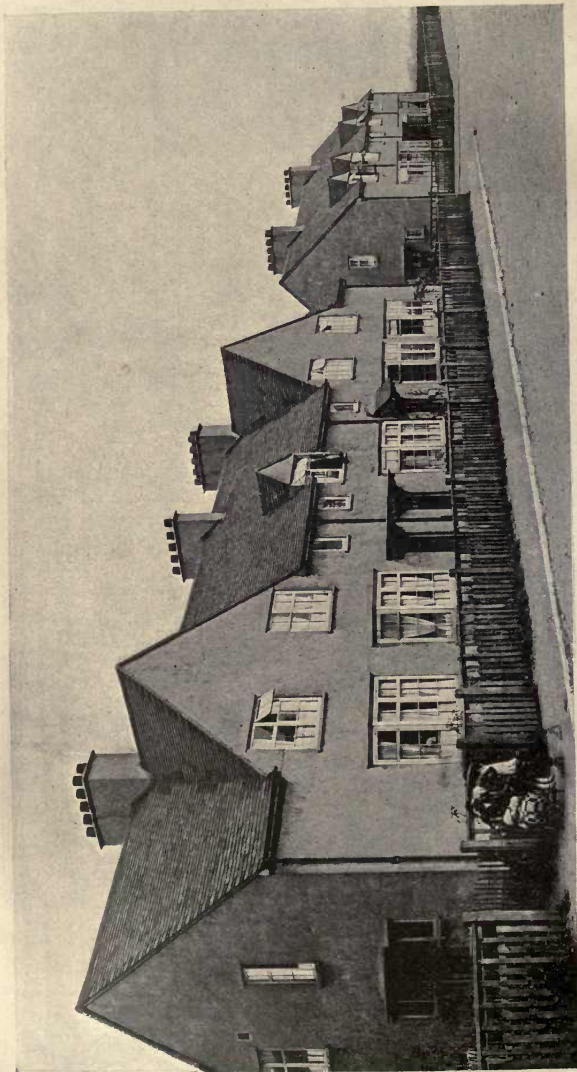
Cottage Homes.



Old Oak Common Lane Cottages: Plans.

W. E. RILEY, Architect.

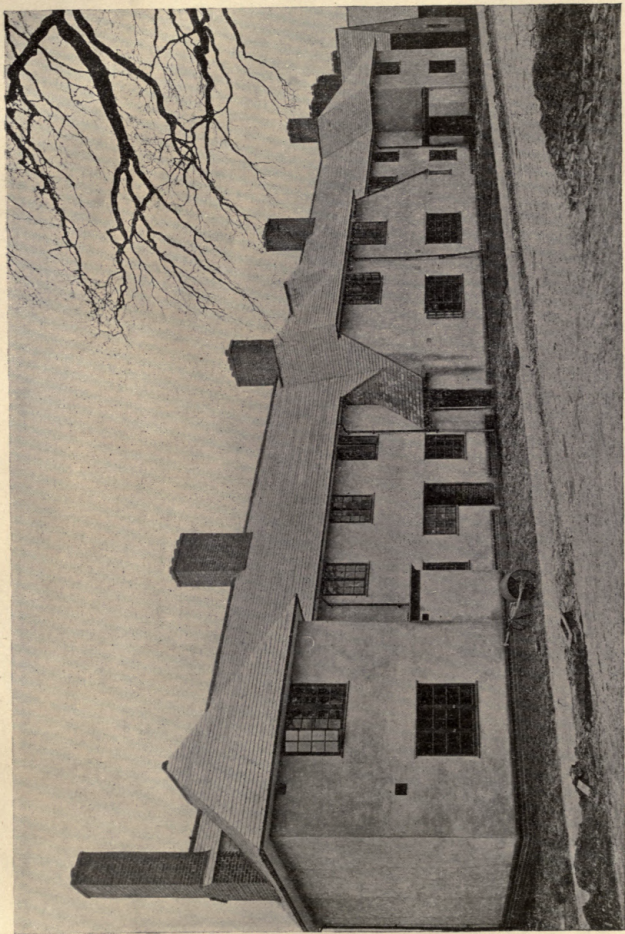
Cottage Homes.



J. GORDON ALLEN, Architect.

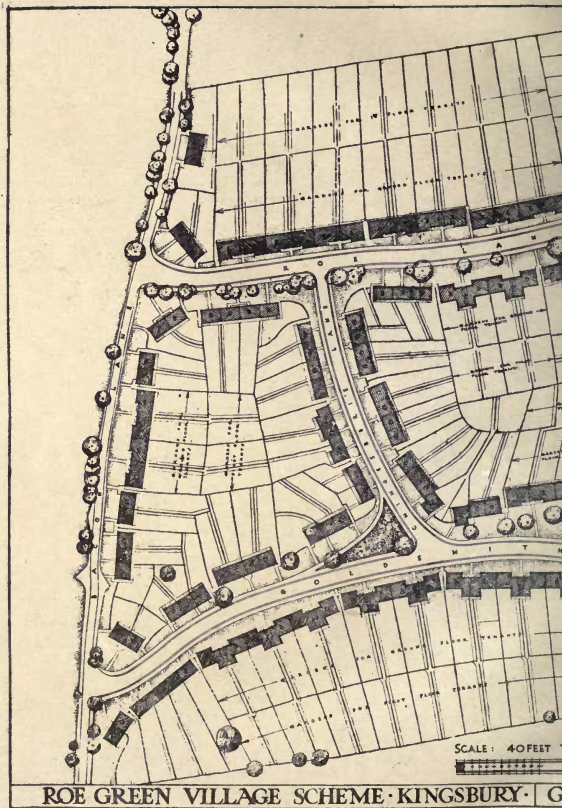
Crayford Garden Village,

Cottage Homes.



Roe Green Village, Kingsbury.

SIR FRANK BAINES, C.B.E., M.V.O., Principal Architect, H.M. Office of Works.



ROE GREEN VILLAGE SCHEME · KINGSBURY · G

Roe Green Village, Kingsbury: Lay-out.



PLAN LAY-OUT OF SITE. H.M. OFFICE OF WORKS, END CHARLES ST S.W.I. No 131

HANK BAINES, C.B.E., M.V.O., Principal Architect, H.M. Office of Works.

Cottage Homes.



Interior of Episcopal Church, Gretna. GEOFREY LUCAS, Architect.

The whole Housing Scheme was designed by **RAYMOND UNWIN, Architect.**

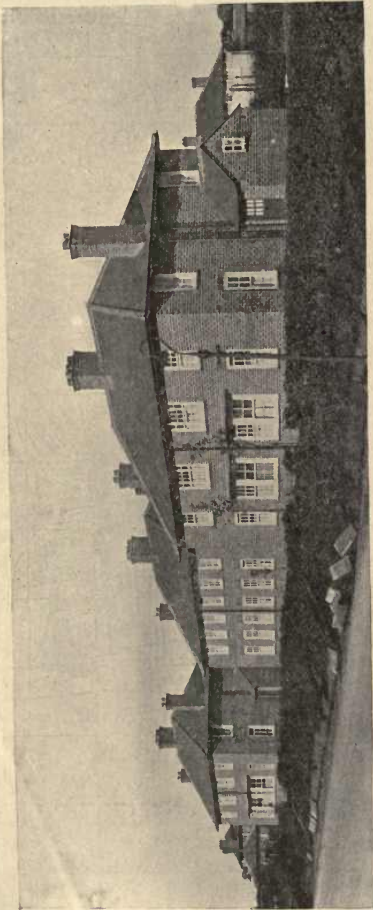
Cottage Homes.



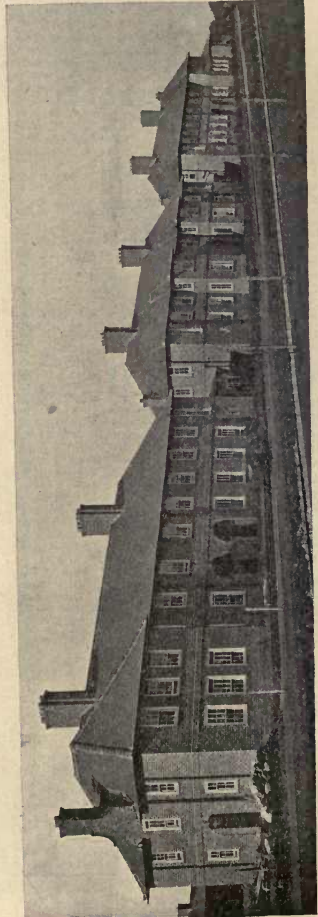
RAYMOND UNWIN, Architect.

Township of Gretna, N.B.

Cottage Homes.



STAFF COTTAGES, ANNON ROAD.

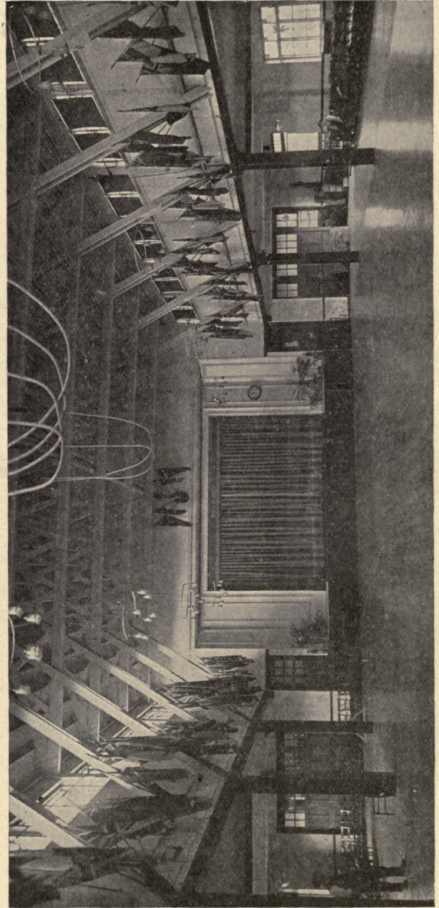
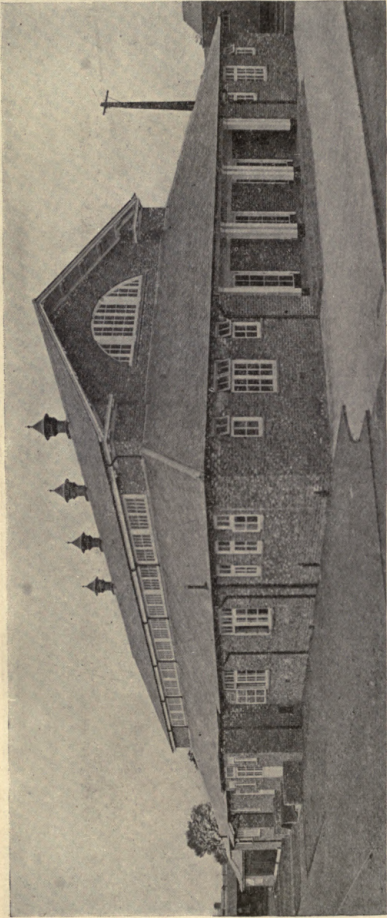


COTTAGE GROUPS, CENTRAL AVENUE.

Township of Gretna, N.B.

RAYMOND UNWIN, Architect.

Cottage Homes.



BORDER HALL.

Township of Gretna, N. B.

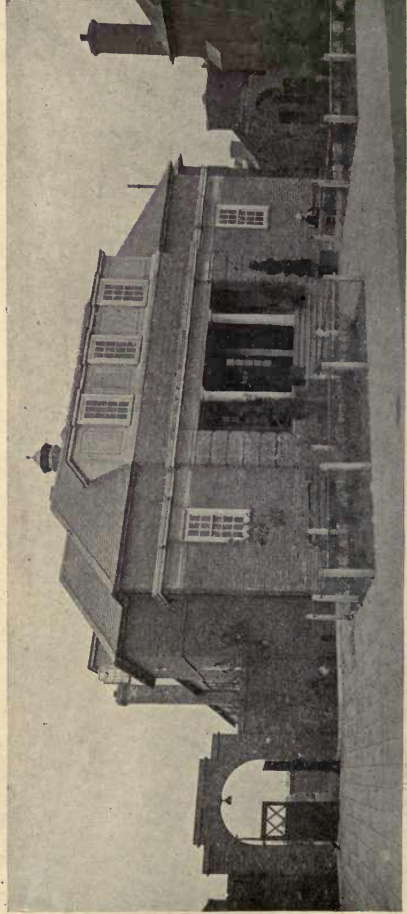
RAYMOND UNWIN, Architect.

Cottage Homes.

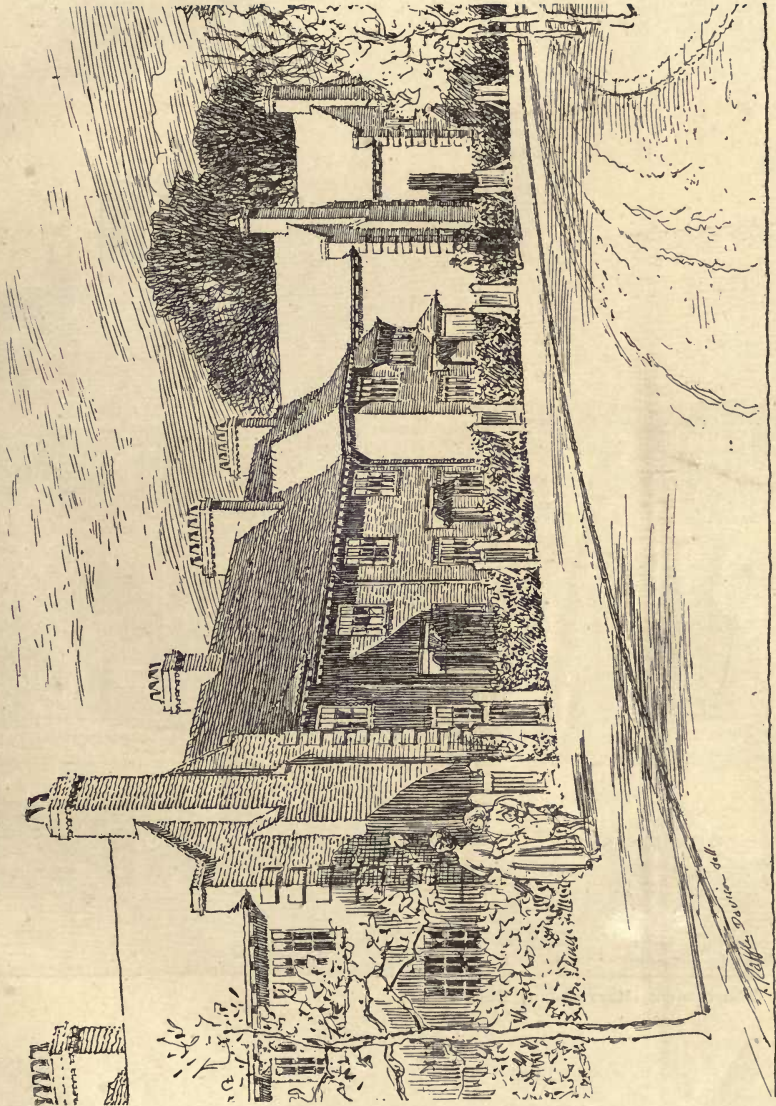


Cottages: Victory Avenue, Old Oak Estate.

RAYMOND UNWIN, Architect.



Cottage Homes.



Shortstowen, Harrowden, Bedford.

CACKETT & BURNS DICK, Architects.



Shortstown, Harrowden, Bedford.



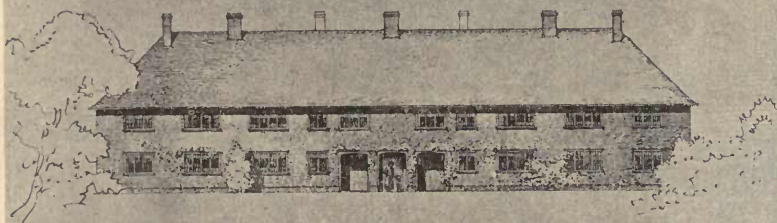
Chas. R. Burnard
architect

CAKETT & BURNS DICK, Architects.

Cottage Homes.



NORTH ELEVATION



SOUTH ELEVATION



FIRST FLOOR PLAN



SECTION A-B

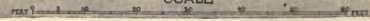
END HOUSE	AREA OF	AMOUNT
	SQ. FT.	SQ. FEET
LIVING ROOM	192.6'	181.6'
PARLOUR	120.0'	143.6'
BEDROOM 1	165.0'	181.6'
•	2 145.0'	145.0'
•	3 120.0'	127.6'
•	4 102.0'	127.6'
	CUBIC FEET	CUBIC FEET
CUBICAL CONTENTS	17,200	19,770
PER HOUSE		PER HOUSE



GROUND PLAN

SCALE

THIS HOUSE IS DESIGNED AS A TWO-FAMILY HOUSE. THE SECOND FLOOR AND PART OF THE FIRST FLOOR ARE INTENDED FOR USE AS TENEMENTS.



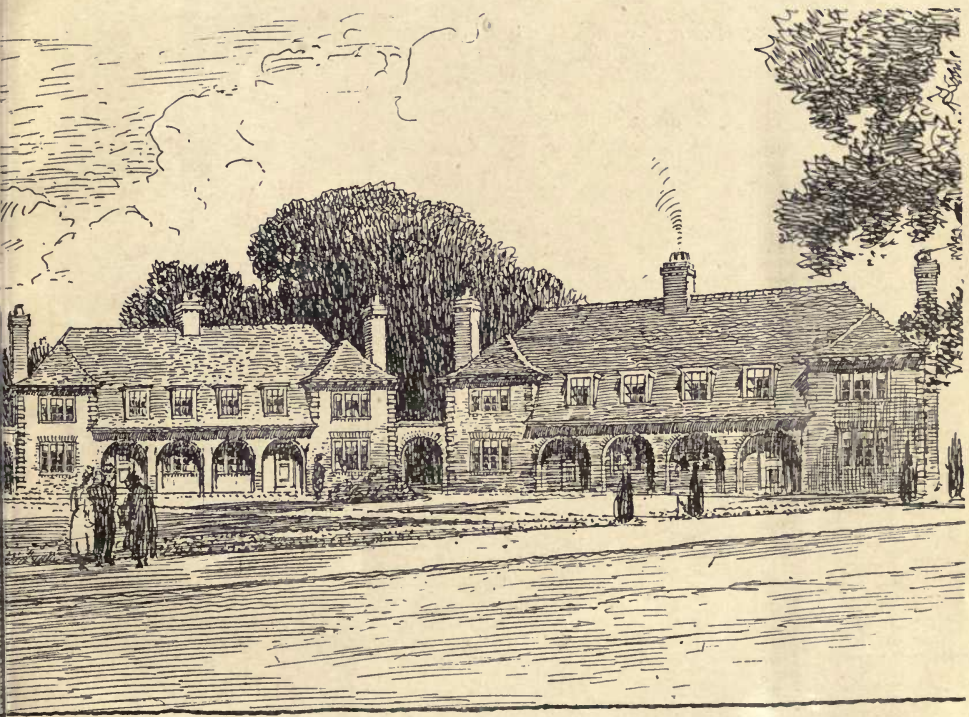
Bristol Housing Competition: TYPE No. 6. Premiated Design.

S. S. REAY, Architect.



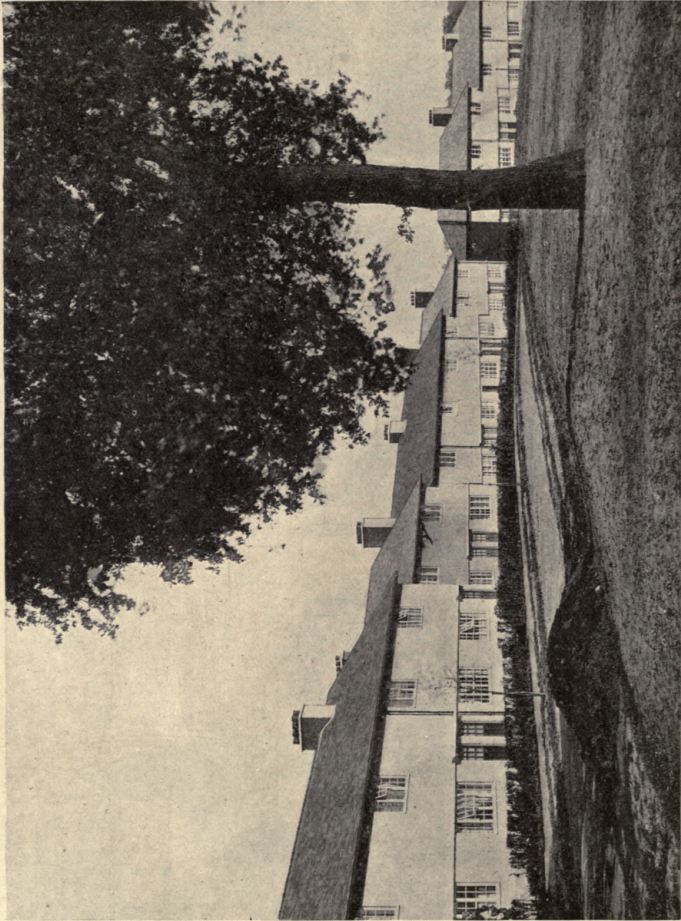
Shortstown, Harrowden, Bedford.

Homes.



CAKETT & BURNS DICK, Architects.

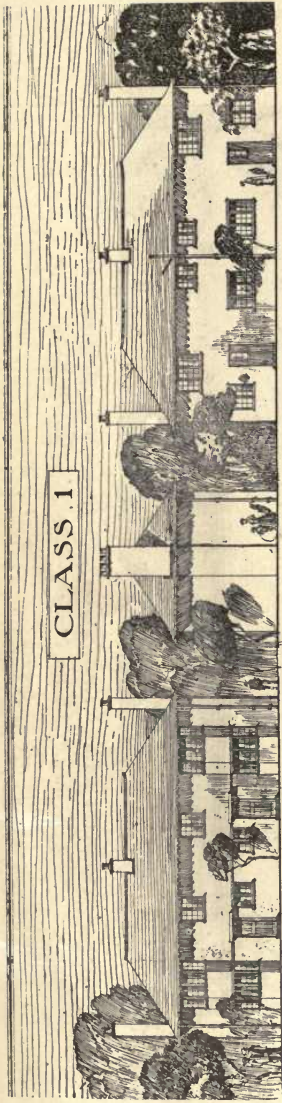
Cottage Homes.



Gooden Crescent Royal Aircraft Factory, Farnborough. Housing Scheme, Cove.
R. J. ALLISON, Principal Architect, H.M. Office of Works.

Cottage Homes.

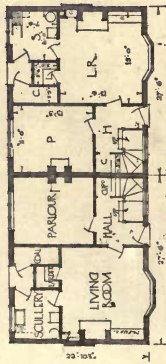
CLASS 1



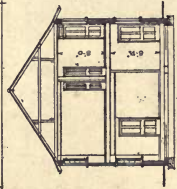
Front Elevation

End Elevation

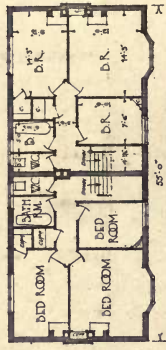
Back Elevation



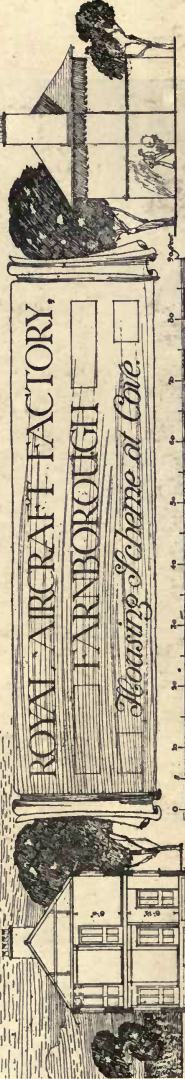
Ground Floor



Cross Section



First Floor

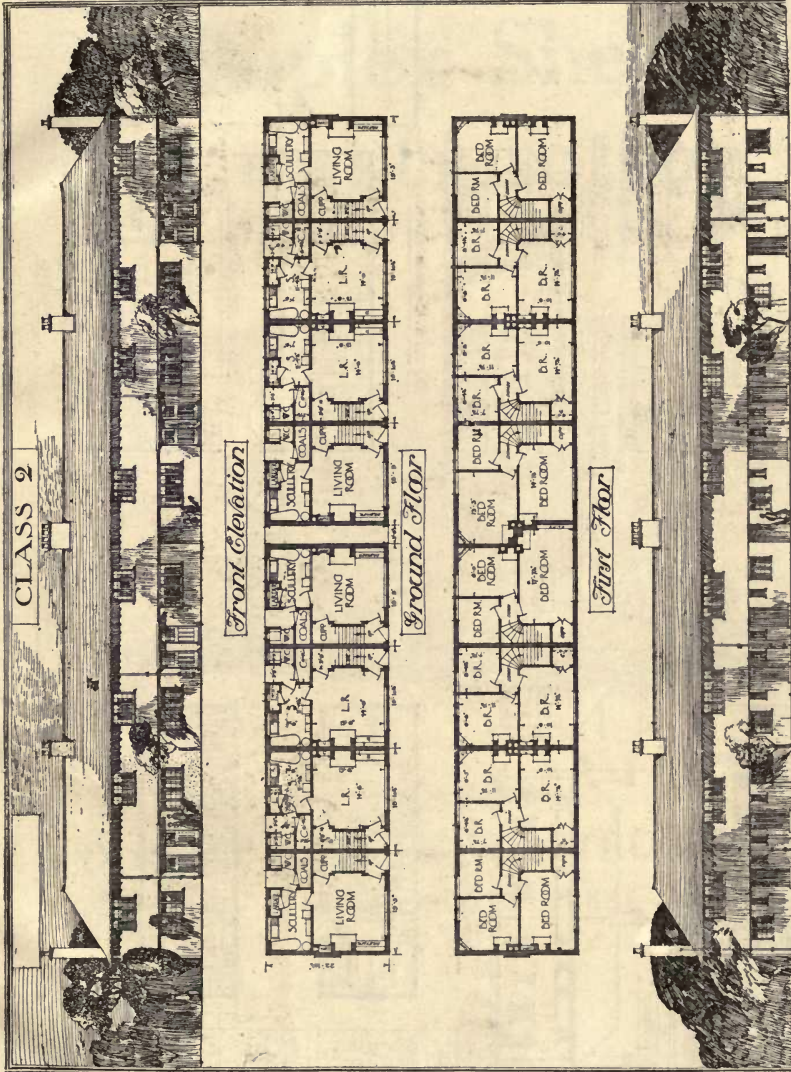


Cross Section

End Elevation

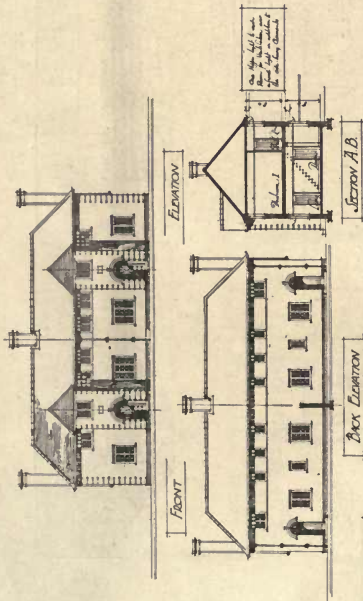
Royal Aircraft Factory, Farnborough : Housing Scheme at Cove.
 R. J. ALLISON, Principal Architect, H.M. Office of Works.

Cottage Homes.



Royal Aircraft Factory, Farnborough; Housing Scheme at Cove.
 R. J. ALLISON, Principal Architect, H.M. Office of Works

BOLTON COTTAGE COMPETITION TYPE IIIA.



All Crops of Boltons on this site.

SCHEDULE OF AREAS

Plot Area	1000 sq. ft.
Foot Path	100 sq. ft.
Driveway	100 sq. ft.
Garage	100 sq. ft.
Stable	100 sq. ft.
Shed	100 sq. ft.
Back Yard	100 sq. ft.
Front Yard	100 sq. ft.
Plot Total	1400 sq. ft.

ONE CONTINUOUS

per 1000 sq. ft. of plot.

Notes on the Windows

to be used in the front of the house.

to be used in the back of the house.

to be used in the side of the house.

to be used in the front of the house.

to be used in the back of the house.

to be used in the side of the house.

to be used in the front of the house.

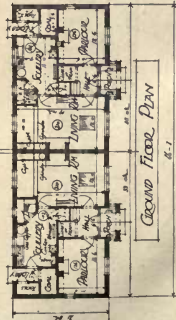
to be used in the back of the house.

to be used in the side of the house.

to be used in the front of the house.

to be used in the back of the house.

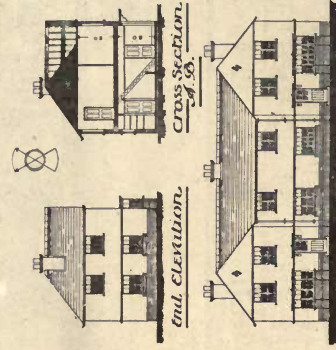
to be used in the side of the house.



Area of plot 1000 sq. ft. for house.

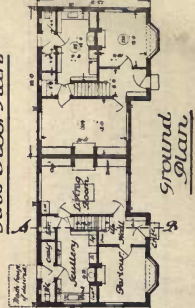
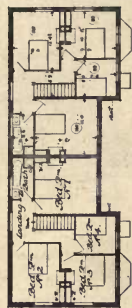
Second Premiated Design. Class 3A.
HALLIDAY, PATERSON & AGATE, Architects.

County Borough of Bolton Housing Competition Type No 34 Sheet No 2



Architects
per Sheet
1975
1975
1975

Front Elevation.

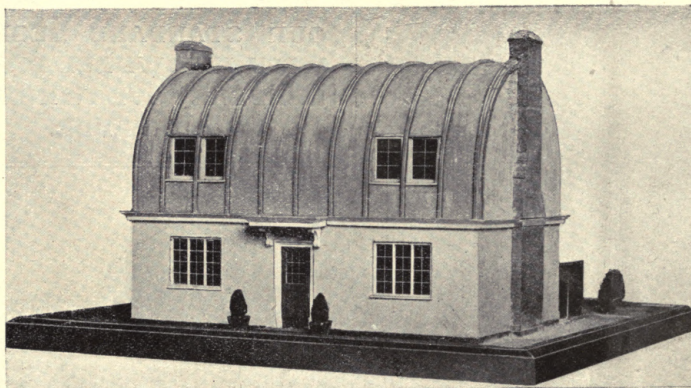


CLASS 3A
FIRST FLOOR & GROUND FLOOR

First Premiated Design. Class 3A.
SEED & ATKINSON, Architects.

Duplex Sheath Construction

(Patent applied for).



For particulars apply to

DUPLEX SHEATH CONSTRUCTION Co.,
6, MOORGATE STREET,
E.C. 2.

Telephone

LONDON WALL { 7384
7385

ELECTRIC LIFTS

—MADE BY—

SMITH, MAJOR & STEVENS, Ltd.

(Late A. SMITH & STEVENS)

Are Specified and Used by All Leading Authorities and Architects.

	No. of Lifts.
HOUSES OF PARLIAMENT	2
BRITISH ADMIRALTY, for Super-Dreadnoughts	143
"S.S. Aquitania," for Cunard Steamship Company	10
National Institute for the Blind	4
Selfridge & Co., Oxford Street	4
Institution of Civil Engineers, New Premises	6
Guildhall School of Music	1
New Law Courts, Cape Town, for South African Government	2
Brazilian Government Laboratory, Rio de Janeiro	1
Vickers, Ltd., Barrow-in-Furness	5

**OUR STANDARD DESIGN
WITH VEE WHEEL DRIVE
RENDERS OVERWINDING
IMPOSSIBLE.**



Combination for Passenger Lift with Electric Control from Cage.

BATTERSEA, S.W., LONDON, & Abbey Works, NORTHAMPTON

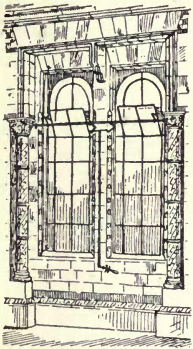
'Phones: Battersea 1856; Northampton 564.

In making enquiries of Advertisers please refer to this Publication



BY APPOINTMENT

THUMBNAIL-SKETCHES OF ELSLEY'S PATENTS.



ELSLEY'S PATENT BALANCE SASH LEVER has been on its trial during the last 44 years, & is still considered the best means obtainable for opening & closing fanlights & top lights otherwise out of reach. The adjoining sketch shows one of the large windows in the Natural History Museum, South Kensington, to which the Patent Balance is adapted to open two heavy casements with one action.

ELSLEY'S PATENT ZEPHYR INLET VENTILATOR
for that of the Vent

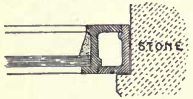


outside of the frame, & is the casement may be made strongly recommended, as

ELSL
METAL
A15
v. 51

Academy architecture and architectural review

inside & light. This material being structurable.



ELSL
made it with round less cut

mortice lock.



ELSLY'S PATENT STAINLESS
easily fix lock furn

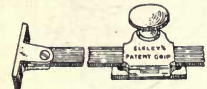
PLEASE DO NOT REMOVE
CARDS OR SLIPS FROM THIS POCKET

ts, is more any other



ELSL
be had in iron or brass case small key; also specially m

UNIVERSITY OF TORONTO LIBRARY



ELSL
caseme

strain.

WE invite the attention of FURNISHERS, & SHIPPERS to our models of ESPAGNOLETTE styles, suitable both for h

RS, HOUSE S, BOLTS, etc., in all

THOM
Wh

street.

Telephone. Museum, 3
Telegrams. Elsleys, Wesdo, London.

