

About

## The Echoes Report Magazine

The Echoes Report Magazine is a glossy quarterly publication focused on Mid-20th century style & design. Specific emphasis is placed on the 1920s, '30s, '40s, '50s and '60s eras, including Art Deco, Streamline Moderne, Biomorphc '50s and Abstract '60s styles and movements, from kitsch to high-end. As the only publication devoted entirely to the 1930s-1960s eras, The Echoes Report serves as the best resource for informative articles, vintage specialty shops, auction results, events, shows, books, and exhibitions regarding the Modern Movement.

The Supplemental is published between magazine issues to keep our readers abreast of the changes and events in the marketplace.

The Supplemental also provides a venue for shop owners, dealers and individuals to present a photograph of the current inventory they have for sale. This combination of pictures and descriptions provides readers with a first-hand look at what's for sale within the Modern Market!

Why not subscribe? and

receive four quarterly issues of the exciting and informative Echoes Report magazine along with the picture-packed Supplementals between issues, all for only \$16.50 per year! (Sample issue \$5.00)

Mail to:

**Deco Echoes Publications**  
The Echoes Report  
Post Office Box 2321  
Mashpee, MA 02649

Or, for credit card orders call:

**800-695-5768**

**Deco Echoes Publications**  
The Echoes Report  
Post Office Box 2321  
Mashpee, MA 02649

# SUPPLEMENTAL

to *The Echoes Report Magazine*

FALL 1995 \$1

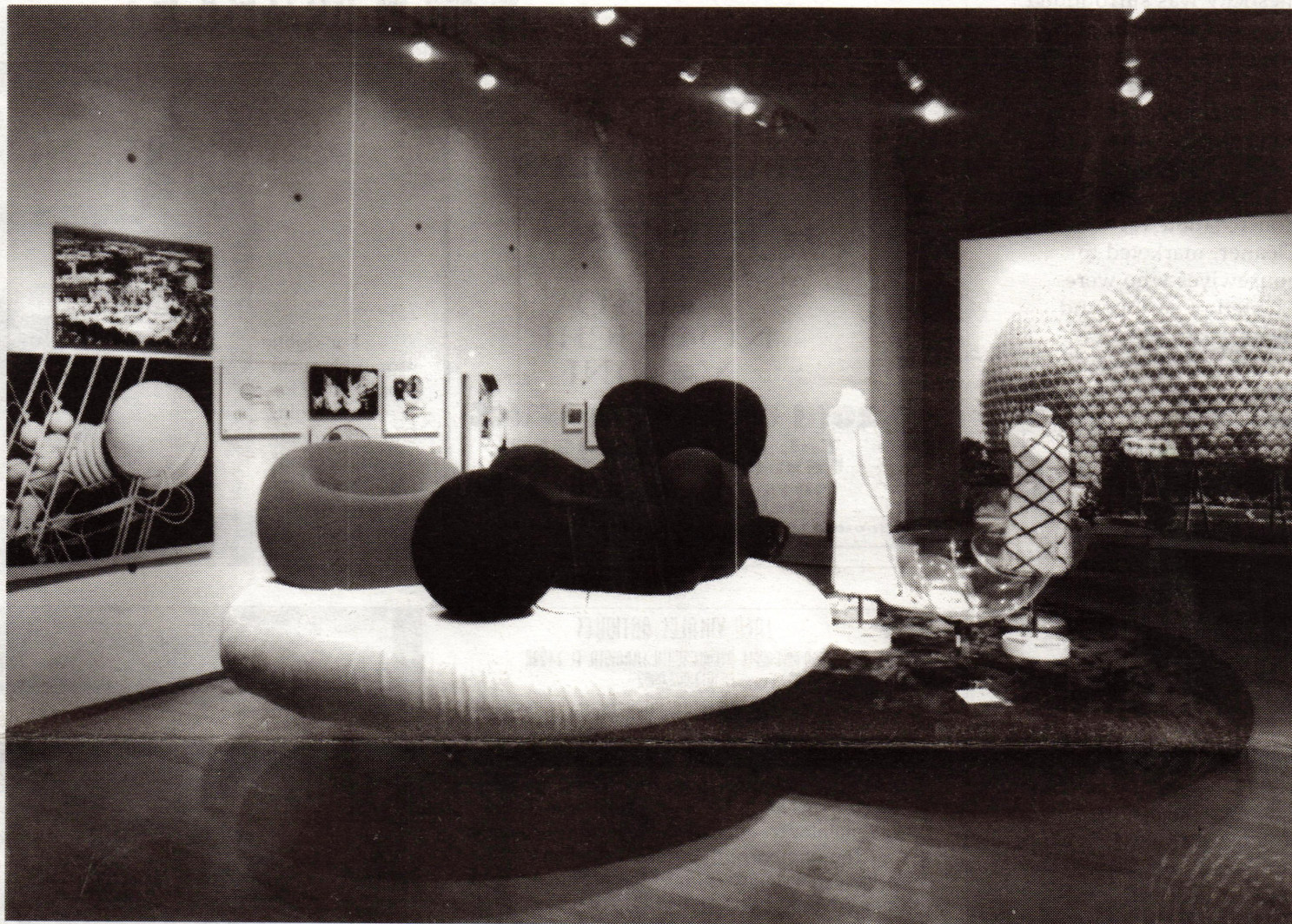


Photo: David Whittaker

## Pop In Orbit: Design from the Space Age

Launch into orbit with the first historical exhibition at Toronto's Design Exchange, *Pop In Orbit: Design from the Space Age*, an innovative retrospective of Sixties Pop design and the space age influences that shaped the futuristic styling of the decade. Rachel Gotlieb, Curator of Design Exchange and this exhibition, examines how the sphere, representing both the space race and the sexual revolution of the Sixties, shaped the design of that futuristic, free-spirited decade. The sphere, she contends, became a Pop icon whose influence on architecture, furniture, consumer products and fashion was unmistakable.

The Sixties were characterized as a period of optimism. "Baby-boomers" became consumers who were surrounded by technological innovations that encouraged a sense of freedom and

*Above:* Italian designer Gaetano Pesce's 1969 UP 1 and UP 5 chairs are part of the Pop In Orbit exhibition. The chairs are part of a series of designs by Pesce which, after fabrication, were compressed into flat pancakes and then vacuumed packed in PVC wrappers. Removed from the package and exposed to air, they literally "pop" back into their original shapes.

Louis C. Emond Jr  
34 Robin Hood Dr.  
Seekonk, MA 02771

BULK RATE  
U.S. POSTAGE  
PAID  
PERMIT #382  
SOUTH HOLLAND, IL

## Pop In Orbit

(continued from cover) mobility no previous generation had ever enjoyed. Every aspect of their lives from space exploration to domesticity was surrounded by inventions which challenged mankind's imagination. The sphere image was symbolized in inventions ranging from Buckminster Fuller's geodesic domes to Hoover's floating Constellation Vacuum Cleaner, marketed to housewives who were "...tired of earthbound vacuum cleaners."

Designed by Bruce Mau and Kevin Sugden of Bruce Mau design inc., *Pop in Orbit* captures the essence of the sphere as the ubiquitous design icon of the Sixties. Our space age society celebrated such futuristic strides as Clairtone Sound Corporation's 1964 Project G Stereo and the 1969 Apollo II moon landing.

Featured in this diverse exhibition are the works of Canadian and international designers including Archigram, Gae Aulenti, Francois Dallegret, Al Faux, Bruce Goff, Beth and Herbert Levine, Ingo Maurer, Gaetano Pesce, Paco Rabanne, Timo Sarpeneva, Stefan Siwinski, Hugh Spencer, and Roger Vivier.

The exhibition is divided into five themes: **Brave New Living - Lifestyles of the Space Age**

Spherical stereos, lamps and telephones were just a few of the objects that enticed consumers to take that bold stride forward into the realm of futuristic design. These products allowed the consumer to create, within the comfort of their gravity restricted lives, galactic getaways.

**Sex and the Single Stereotype - Sexist marketing tactics of Pop design**

The arrival of the birth

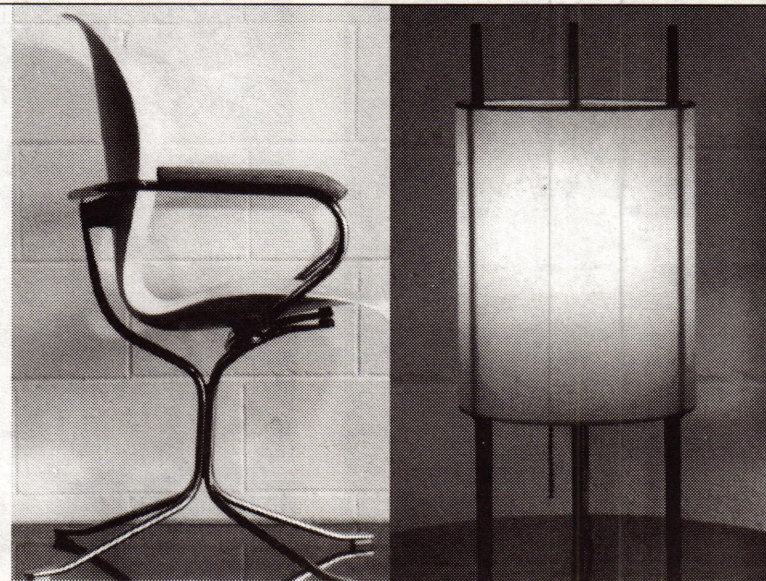
# The MODERN MARKET

**WANTED  
COLLECTIBLES  
KNOLL  
H. MILLER  
JUHL  
ALTO  
NOGUCHI  
VENINI E.T.C.  
20TH CENTURY CLASSICS**

**Tel: (214) 880-0020  
Fax: (214) 351-6208  
3017-B Routh Street  
Dallas, TX 75201**

**Booth #19 at Winnetka Modernism Show!**

Far right:  
Isamu Noguchi  
table lamp for  
Knoll Right:  
Gideon Kramer  
"Ion Seating"  
1962, Manufactured by American Desk Co.



## JACK VINALES ANTIQUES

530 PINEAPPLE AVENUE SOUTH, SARASOTA, FL 34236  
813-957-0002

The shop always features the finest in American Art Pottery and the best in Mid-Century Modern furnishings and accessories. There is also available a premier selection of outstanding Bakelite jewelry, including the highly desirable polka dot and multilayered designs. Never a reproduction!

The photograph at left displays three pieces of Roseville Futura, one of the most sought after lines of Roseville, and ideal for accessorizing Moderne interiors. The pieces were produced in 1928 and were usually only marked with paper labels. Collectors have given nicknames to most of the pieces, and these are named (from left to right) The Torch, The Spaceship, and The Bamboo Leaf Ball. Fabulous! We are always interested in buying better pottery, including Rookwood, TECO, SEG, Fulper, Van Briggie, etc.



## "A Visual Fantasy"

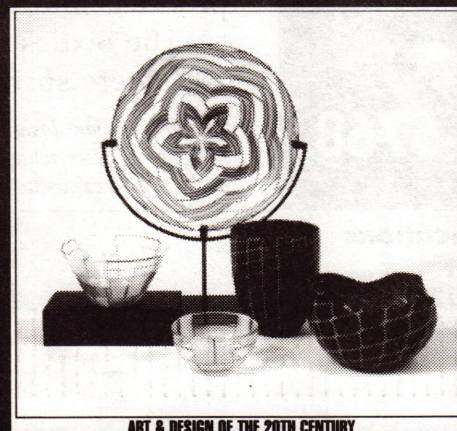
As much a museum as it is a gallery, Art & Industrial Design contains an array of treasures gathered from around the world to delight the eye and intrigue the fancy. A resource for many great public institutions, museums, and private collectors, the gallery features a choice selection of decorative arts of the 20th century. Among the prized items offered are original furniture by such influential designers as Donald Deskey, Gilbert Rohde, Wendell Castle and Isamu Noguchi, major examples of the ivory and bronze sculptures of Preiss and D. Chiparus, Daum crystal, Hagenauer sculptures, glass by Schneider and Lalique, and art deco clocks by Frankel, Weber and Rohde. Rare and often unattainable elsewhere, much of Art & Industrial Design's collection is literally unique -- and all of it is important.

## ART & INDUSTRIAL DESIGN SHOP

**ART**

SPECIALIZING IN:

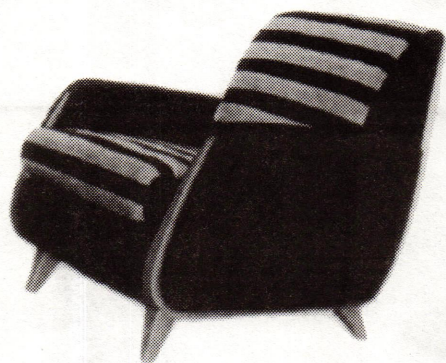
- American Deco
  - English Deco
  - Italian Glass
  - Bedroom Sets
  - Tables & Chairs
  - Bullfets
  - Baps
  - China Cabinets
  - Art
  - Paintings
  - Sculptures
  - Industrial Designs
- Select from our world famous collection



ART & DESIGN OF THE 20TH CENTURY

399 Lafayette Street @ 4th St. / New York City  
212-477-0116 / FAX 212-477-1420 / HRS: MON-SAT 12-7PM

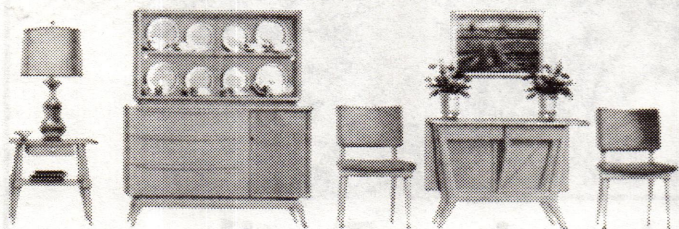
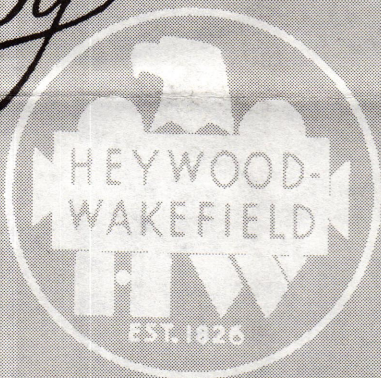
We buy and sell the following artists:  
DONALD DESKEY  
GEORGE NELSON  
ROHDE  
SAARINEN  
KNOLL ASSOC.  
MARCELLO FANTONI  
VENINI GLASS  
SEGUSO  
D. CHIPARUS  
COLINET  
ORREFORES  
GOLDSCHIEDER  
K. HAGENAUER  
VERNER PANTON  
FULVIO BIANCONI  
PICASSO  
MIRO  
K.F. HAGENAUER  
WILLIAM SPRATLING  
and many more!!



*Comfortable, Convenient,  
Versatile* here is modern furniture  
whose simple basic design  
makes for easier housekeeping  
and flexibility of use

modern

by



*Cadillac Jack*

Featuring the largest selection of Heywood-Wakefield furniture in the country

Total restoration available • Buy, Sell, Trade

2820 Gilroy Street • Los Angeles, CA 90039 • 800-775-5078

control pill meant that women were experiencing more sexual freedom. Marketers portrayed women as sexually active creatures fondling and caressing products directed to the male consumer.

**Galactic Girl - Space-age Fashion**

White go-go boots, paper dresses and mini skirts were fashion staples in the closets of every Sixties "galactic girl." These sexy futuristic designs, created with such alternative materials like PVC plastic, silver metal, and lucite, rocketed off designer runways to mass consumer appeal. Ten Sixties items from the 10,000-piece 20th century couture collection of Sandy Schreier are part of the exhibit, including designs by Andre Courreges, Paco Rabanne, and Roberto Rojas.

**Bubble Vision - Utopian Architecture**

This section looks at the whole craze of bubble vision in the Sixties when Pop designers used inflated plastic for their pneumatic spherical architecture, inspired in part by the launch of the American space satellite Echo 1, a silver inflated sphere over 100 feet in diameter and eight stories tall.

**Balls In Motion**

Relax in the exhibition hall's Pop colored bean bag chairs and view a 45-minute video depicting the futuristic styling of the Sixties. This video presentation includes clips of the launching of the Alouette satellite, Star Trek, Barbarella, The Graduate, a space-inspired fashion show, and an Electrohome promotional piece associated with the optimism of space age design.

*Pop in Orbit: Design from the Space Age* runs September 12, 1995 to January 26, 1996 at the Design Exchange, 234 Bay St., Toronto, Canada. For more info. call (416) 216-2160.

## EVENT REMINDERS

### OCTOBER

**27** Skinner's 20th Century Italian Art Glass Auction in Boston, MA (617) 350-5400

**28** Skinner's Art Glass & Lamps, Arts & Crafts, Art Deco & Modern Auction in Boston, MA (617) 350-5400

**28-29** Vintage Fashion Expo in Santa Monica, CA (415) 822-7227

**28-29** Eastern States Antiques & Collectibles Show in W. Springfield, MA (203) 758-3880

**28-29** International Vintage Poster Fair at the Spectrum Gallery in San Francisco, CA (212) 206-0499

**30** Sotheby's Watches Auction in NYC (212) 606-7000

### NOVEMBER

**3-5** Metropolitan Antique Textiles & Vintage Fashion Show in NYC (212) 463-0200

**4-5** Winnetka Modernism Show in Winnetka, IL (708) 446-0537

**6** Butterfield & Butterfield's Art Nouveau, Art Deco, and Arts & Crafts Auction in Los Angeles, CA (213) 850-7500

**10-11** Wrigleyville's Holiday Antiques Show in Chicago, IL (312) 868-0285

**11** Skinner's Posters Auction in Boston, MA (617) 350-5400

**11-12** Manhattan Triple Pier Expo in NYC (201) 384-0010

**12-13** Leslie Hindman Auctioneer's 20th Century American & European Design Auction in Chicago, IL (312) 670-0010

**14-15** Christie's Contemporary Art Auction in NYC (212) 546-1000

**15** Christie's East Ocean Liner Sale in NYC (212) 606-0400

**17-19** Sanford Smith's Modernism Show in NYC (212) 777-5218

**17-19** Metropolitan Antiquarian Book Fair in NYC (212) 463-0200

**18-19** Manhattan Triple Pier Expo in NYC (201)

# The MODERN MARKET

## 20TH CENTURY AUCTION

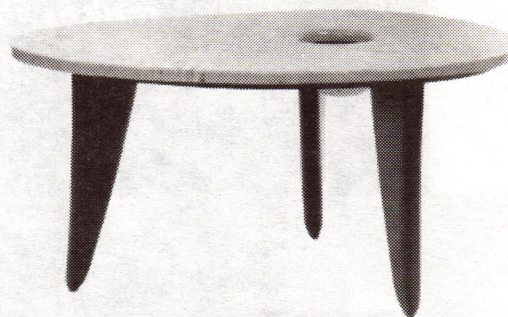
DECEMBER 3 CHICAGO, ILLINOIS USA

*Arts & Crafts  
Art Nouveau, Art Deco  
Important Fine Art  
1950s / Modern Design  
Italian & Scandinavian Glass*

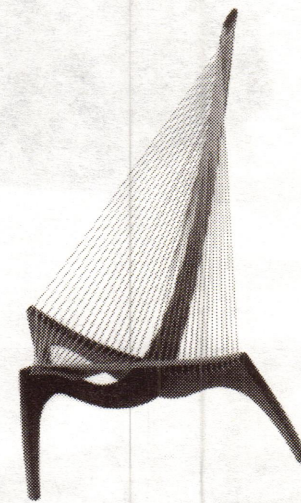
*Color Catalogs \$30. Foreign \$40.  
Everything Guaranteed  
Delivery Worldwide  
Absentee Bids Welcome*

### TREADWAY GALLERY

2029 Madison Road  
Cincinnati, OH 45208 USA  
513-321-6742 Fax: 513-871-7722



Isamu Noguchi table, Herman Miller, c. 1948



Jorgn Høvelskou, c. 1950s



## Your Source For Vintage American Textiles

- 1930's Damask • 1940's Tropicals • 40's & 50's Theme Fabric •
- 1950's Abstract & Atomic • Barkcloth Solids

109 Church Street #10 Phila., PA 19106 (215) 628-3176 FAX (215) 922-6573

# The MODERN MARKET



**Citybarn Antiques**

362 Atlantic Avenue, Brooklyn, NY 11217 (718) 855-8566

Featuring Heywood-Wakefield for the advanced collector...

- 1930s:** Airflow 9-pce. diningroom set, Davenport (C3172-63), Armchair (C3172C), pr. of Sakhnoffsky pier cabinets, Airflow 3-dwr. chest.
- 1940s:** Niagara 7-pce. bedroom set, Arm chair (C3760C) with Leg rest (3763LR), Davenport (C3760-72).
- 1950s:** Kohinoor dresser with deck top, Sculptura triple dresser with mirror, Sculptura 4-dwr. chest, Aristocraft high back arm chair (CM727R), Aristocraft 3-seat Davenport (CM929-66), Game Dining Table with 4 leaves (787G) and 6 chairs (2 captain & 4 side).
- 1960s:** Crown glass china on buffet (M1547 on M1543), Encore double dresser (M1524), Kneehole desk.

And more...Call us with your "wish list."

Buy/Sell/Rent



## Elektra

4327 N. Western Avenue, Oklahoma City, OK 73118  
(405) 524-4327

Constantly changing inventory of '20s Deco - '70s kitsch  
at very reasonable prices

Free catalog of vintage reproductions and books



U.S. funds only

Shipment world wide

Local Rt.66 information



## The 20th Century...

★ **Daniel Donnelly** ★  
*Decorative Arts & Modern Design Studio*

AUTHORIZED RETAILER  herman miller for the home

REISSUED HEYWOOD-WAKEFIELD

VITRO DESIGN MUSEUM MINATURE COLLECTION

703.549.4672 ★ 107 N. FAYETTE STREET  
CORNER OF KING & FAYETTE ST. ★ OLD TOWN, ALEX. VA.  
MON, THURS & FRI 11AM-7PM ★ SAT NOON-6 ★ SUN NOON-5  
CLOSED TUES & WED



**Streamline Furniture**

**Modern Lighting &**

**Selected Highlights**

**from the 1930s-1960s**

**Featuring:**

**Heywood-Wakefield**

**Herman Miller**

**Knoll, Lloyd and**

**anonymous talents**

384-0010

### DECEMBER

**2-3** Philadelphia Antiques Expo in Phil., PA (212) 255-0020

**2-3** Art Deco-50s Holiday Sale in San Francisco, CA (415) 599-DECO

**6** William Doyle Galleries Couture Auction in NYC (212) 427-2730

**8-9** Christie's Art Nouveau & Art Deco Auction in NYC (212) 546-1000

**10** Modern In Manhattan Auction in NYC (800) 419-3060

**30-Jan 1** New Year's New York Coliseum Antiques Show in NYC (201) 384-0010

### JANUARY

**19-21** Miami Modernism Show in Miami, FL (313) 886-3443

**28** Cincinnati 20th C. Revue Show in Cincinnati, Ohio (513) 738-7256

### ONGOING

**Sept.12 - Dec.31** Pop In Orbit: Designs from the Space Age at Design Exchange in Toronto, Canada (416) 216-2160

**Sept.29 - Jan.7** Shaken Not Stirred Exhibition at the Milwaukee Art Museum in Wisconsin (414) 224-3200

**Oct.1 - Jan.23** Piet Mondrian: 1872-1944 at MOMA in NY (212) 708-9400

**Oct.6 - Dec.16** Rethinking English Arts & Crafts: The Modernist Tradition in Turn-of-the-century British Design at Moderne Gallery in Philadelphia, PA (215) 923-8536

**Oct.15 - July 28** Images of An Era: Examining MOCA's Art Acquisitions Between 1940-1975 at MOCA in Los Angeles, CA (213) 626-6222

**Oct.18 - Feb.11** Uncommon Threads: 300 Years of New York Style at the Museum of The City of New York in NY (212) 534-1672

**Through November 12** The Art of Peter Voulkos at the Oakland Museum in Oakland, CA (510) 238-3401

\*

IN THE NEXT ISSUE OF

# ECHOES

GILBERT ROHDE

PIET MONDRIAN

PUERTO RICAN DECO

1960s - 1970s PLASTICS

HAGENAUER

ALSO

MODERN QUARTERS

VINTAGE VIEWPOINT

LAST LOOK

EXHIBITIONS

WHAT'S HOT

BOOKSTORE

CLASSIFIEDS

AUCTION HIGHLIGHTS

CALENDAR OF EVENTS

SHOW UPDATES

COMING MID-DECEMBER

\*

# The MODERN MARKET

## TRIPLE PIER EXPO



ANTIQUES & COLLECTIBLES

OVER 600 DIFFERENT EXHIBITS EACH WEEKEND

### NOV. 11-12 & 18-19

PIER 88

PIER 90

PIER 92

Sat. 11-6, Sun. 11-7

Sat. 9-6, Sun. 11-5

Sat. 10-6, Sun. 11-6

**New York's  
Largest and Most  
Comprehensive  
Antiques Show!**

Includes furniture, paintings, bronzes, art glass, jewelry, Americana, textiles, ephemera, toys, fashions, deco, moderne, and more.

Passenger Ship Terminal  
Piers 88, 90 & 92  
48th to 55th Street and 12th  
Avenue, New York City.  
Admission: \$10

Stella Show Management Co.  
201-384-0010

## philadelphia antiques expo



OVER 300 EXHIBITS AT THE NEW  
PENNSYLVANIA CONVENTION CENTER  
1101 ARCH STREET IN THE HEART OF  
DOWNTOWN PHILADELPHIA

### december 2 & 3

SATURDAY & SUNDAY 10-5  
ADMISSION \$8.00 - \$2.00 OFF ONE \$8.00 ADMISSION  
WITH THIS AD

### philadelphia's biggest antiques event & sale

A LARGE & IMPORTANT SELECTION OF DECO,  
MODERNE & 20TH CENTURY COLLECTIBLES PLUS  
JEWELRY, AMERICANA, FOLK ART, PERIOD FURNITURE,  
GARDEN & ARCHITECTURAL ARTIFACTS, FINE ART,  
QUILTS, TEXTILES, PAINTINGS, PRINTS, BRONZES, ART  
GLASS, SILVER, TOYS, BOOKS, EPHEMERA & MORE

Stella Show Mgmt. Co.  
212-255-0020 (PSMA)

The  
**MODERN**  
MARKET

**NICHOLAS & SHAUNNA BROWN**

Specializing in the work of  
**Warren McArthur**  
and  
Mid-Century Design

PO Box 1044 • Camden, Maine 04843  
Telephone/Fax: (207) 236-8492



**Kenneth Paul Lesko**  
20th Century Decorative Arts

**Specialist in Italian Glass 1920 ~ 1970**

**Wanted:**

Venini, Martinuzzi, Scarpa, Seguso, Barovier, Frattelli Toso, A. Toso /  
Dino Martens, MVM Cappelin, CVM, Avem, Salir, Nason, Cenedese,  
Salviati, Vistosi, A. Barbini, etc.

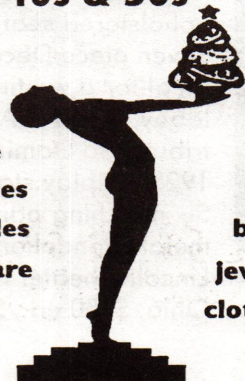
We aggressively pursue the best examples of these producers  
and artists. Top prices paid.

PO Box 16099, Rocky River, OH 44116-0099 • Call: (216) 356-0275



**ART DECO, MODERNE  
STREAMLINE MODERN**

40s & 50s



furniture  
accessories  
collectibles  
dinnerware  
pottery

art  
rugs  
books  
jewelry  
clothing

**Art Deco - 50s Holiday Sale  
"Deco The Halls"**

**Dec. 2-3, 1995**

SAT 10 am-6 pm SUN 11 am-5 pm

Admission \$5

Deco Society Members \$4

PLUS

Vintage Fashion Show on SAT: 2 pm

Produced & Directed by Peter & Deborah Keresztury  
The Concourse Exhibition Center  
8th & Brannan Streets, San Francisco, CA

Weekend Info: (415) 599-DECO • Vendor Space: (415) 383-3008



Today

**ECHOES**

ECHOES

Tomorrow

**THE ECHOES REPORT  
ON THE  
WORLD WIDE WEB**

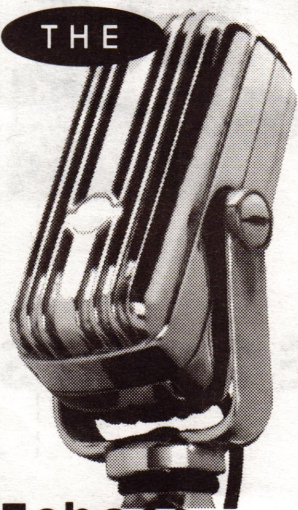
That's right. The Echoes Report Magazine will soon have a site on the World Wide Web! No longer just the world's print resource for mid-20th century style & design, The Echoes Report will soon be the internet's resource for mid-20th century news, information, events, advertisers, books, vintage items and much more!

Advertising your business on The Echoes Report's Web site will be easy (you can use the same ad that you run in the magazine, or we can help you create a new ad for the Web - up to a full-fledged Web page/s!)

**Call: (508) 428-2324**  
for more information.

**ANN**ouncing

THE



**Echoes**  
Report

Advertising

Deadlines

Magazine

N O V E M B E R  1	M A Y  1	A U G U S T  1
---	----------------------	-------------------------------------

1

Supplement

J A N U A R Y  1	A P R I L  1	O C T O B E R  1
--	--------------------------------	--

**Call for rate card:**

508 • 428 • 2324

The  
**MODERN**  
MARKET

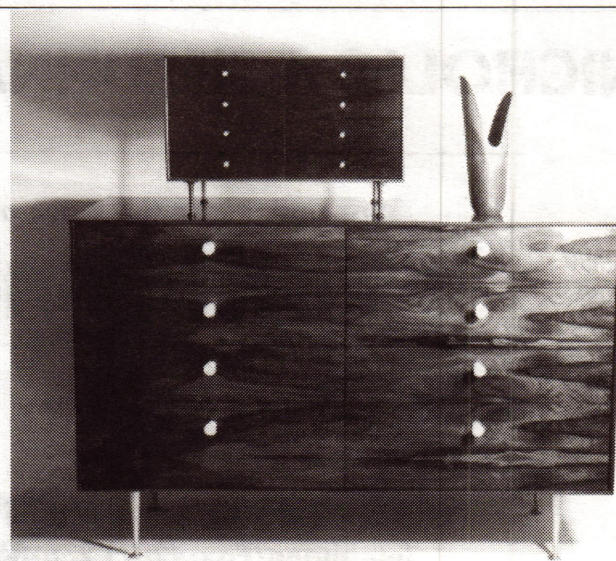
WEINBERG

20TH CENTURY DESIGN

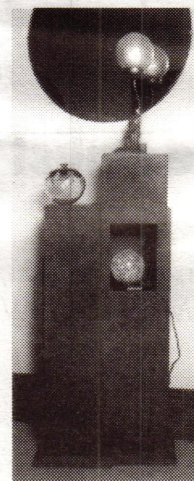
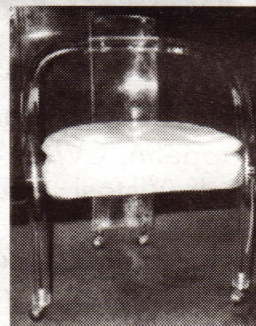
84 WOOSTER STREET  
NEW YORK, NY 10012  
TEL. 212 219 3022  
FAX. 212 219 1034

George Nelson Thin Edge Chest and Jewelry  
Cabinet, all in rosewood. Ceramic vase designed  
by Gunnar Nylund for Rorstrand, Sweden.

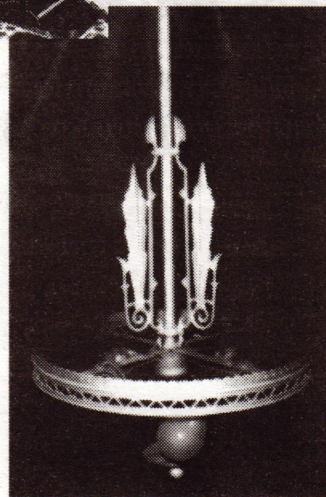
We buy and sell vintage  
furniture, decorative objects  
and accessories by leading  
designers and artisans of the  
mid-twentieth century.



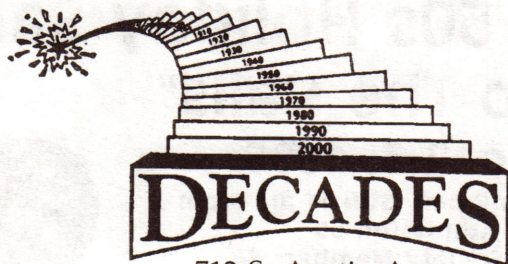
End tables 24" h x 13" d    Dresser 47" h x 33" w



47.5" h x 21" w



Clockwise from top left:  
Fantastic Deco gentleman's  
bedroom suite, 7 pieces in  
Ambonia, attributed to Do-  
minique, Paris 1925 • Fabu-  
lous lucite chair with white  
upholstered seat, \$400 •  
Seven piece Deco suite,  
ideal for a waiting room or  
lobby, wood is Ambonia, at-  
tributed to Dominique, Paris  
1925 (display stand shown) •  
Six matching pair of ornate  
metal chandeliers from the  
Lincoln Theater in Massillon,  
Ohio, \$150 ea., \$900 for all.



712 S. Austin Ave.  
(on the square)  
Georgetown, TX 78626  
(512) 869-0448

Antiques • Gifts • Jewelry • Collectables