

776 ECHOES

R E P O R T

Supplemental Summer 1995

Coming Events Reminders

July

21-23 Metropolitan 20th Century Design Show, NY (212) 463-0200

22-23 Maven Antiques & Collectibles Show at the Berlin Fairgrounds, CT (203) 758-3880

28-30 Metropolitan Antiquarian Book Fair, NY (212) 463-0200

August

2 Swann Galleries' Posters From Private Collections Auction, NY (212) 254-4710

4-6 Metropolitan Antique Textiles & Vintage Fashion Show, NY (212) 463-0200

9 Sotheby's Arcade Jewelry Auction, NY (212) 606-7000

14 Butterfield & Butterfield's Sports Memorabilia Auction, CA (213) 850-7500

18-19 In The Twentieth Century: Antique Show and Sale, Chicago, IL (312) 348-2378

19-20 Arts & Crafts and Vin-

tage Western Sale, CA (415) 599-deco

19 Tiverton Four Corners Antique Show, RI (508) 636-3382

24 Butterfield & Butterfield's Jewelry & Timepieces Auction, CA (213) 850-7500

September

4 Antique Textile Extravaganza, MA (207) 439-2334

8-10 Metropolitan Antiquarian Book Fair, NY (212) 463-0200

15-17 Metropolitan Ephemera Show, NY (212) 463-0200

16-17 Vintage Fashion Expo, CA (415) 822-7227

22-24 Metropolitan Antique Textile & Vintage Fashion Show, NY (212) 463-0200

23-24 9th Woburn Mass. Collectibles Extravaganza, MA (508) 568-0856

30-Oct.1 Atlantique City Holiday Fair Antiques & Collectibles Show, NJ (800) 526-2724



Celebrating the Glory Days of American Movie Theaters

Ticket to Paradise, a new exhibition currently on view at the National Building Museum, presents a portrait of the golden age of American movie theaters, from big-city movie palaces to small-town theaters and suburban drive-ins. The deluxe spirit of these places is captured through the work of renowned photographer John Margolies as well as through vintage photographs and postcards from Margolies' personal collection.

Margolies' photographs document American movie houses built between 1910 and 1950 - when the theaters were as exciting as the films shown in them. Even before the show began, patrons were dazzled by the magic of the movie house design, from flashing marquees to the ornate lobbies and tempting snack bars. As theater impresario Marcus Loew once decreed, "We sell tickets to theaters, not movies."

From 1915 to 1945, more than four thousand palatial movie theaters and numerous smaller houses were built across the United States. Buildings with exuberant facades of colored tile, elaborate sculptural ornament, neon, and glass became the architecture of joy. Architects and designers enticed customers with eclectic styles; exotic Egyptian and Mayan motifs vied with the sleek and chic abstractions of Art Deco and Streamline Moderne. Movie-going became a national pastime, and the gloriously ornate movie theater became an essential part of American culture.

After WWII, as the suburbs began spreading across the landscape, main street commercial districts fell out of favor - replaced by shopping malls on the edges of towns. New faceless multiplexes were built beside mall parking lots. Today, some of the old theaters still show films, while others have taken on new roles as live theaters and concert halls. But most of the picture palaces have been destroyed and remain only as memories and as the mythic subjects of John Margolies' camera.

Ticket to Paradise will be on view at the National Building Museum through September 10, 1995. For more information

All photographs copyright John Margolies/Esto: On cover - Grove Drive-In Theater, Springdale, Arkansas; This page in background - State Theater Tower and Marquee, East San Diego, California, c.1938; This page above - Tower Theater, Sacramento, California, c.1940

1930s

1940s

1950s

1960s

The MODERN MARKET

The Modern Market is a new and exciting addition to The Echoes Report Supplemental, as well as another milestone for our company! This section presents dealers, shop owners and individuals with an opportunity to display a photograph of some of the inventory which they are offering for sale at the present time. A picture is worth a thousand words, and we feel these photographs will really help you, our subscribers, understand what kind of merchandise our advertisers are carrying and help you find the exact pieces you are looking for. This section will grow rapidly in size (pages) and therefore there are no restrictions on the amount of advertisers who can participate.

How to advertise in The Modern Market:

(The Modern Market will be part of every Supplemental which is published between each magazine issue.)

- A Copy:** send no more than 120 words. Please type.
- B Photographs:** please send horizontal 3x5 black & white prints. \$6 extra charge to halftone photograph, \$6 for reduction to 3x5 size if necessary.
- C Rates:** 1/3 page (3Hx8W") \$80 2/3 page (6.25Hx8W") \$160 Full page (10.5Hx8W) \$240 Frequency discounts available, call for details.
- D Deadlines:** July 1st, Oct. 1st, Jan. 1st, Apr. 1st
- E Send to:** Deco Echoes, P.O. Box 2321, Mashpee, MA 02649 **Fed Ex:** 12 Lan Rd., Sandwich, MA 02563



citybath Antiques

362 Atlantic Avenue Brooklyn, NY 11217

(718) 855-8566

Featuring Heywood-Wakefield for the advanced collector...

- 1930s:** Airflow 7-pce. bedroom set, Airflow 9-pce. diningroom set, Crescendo vanity & pouffe.
- 1940s:** Riviera 6-pce. bedroom set, Jiranek bookcase-end desk (C3777WX).
- 1950s:** Aristocraft 3-pce. sectional sofa (CM388), Ser vice wagon, Round extension table (M950G) with 6 chairs, pr. of Pier cabinets, Knee-hole desk, Tambour cabinet, Corner bookcase.
- 1960s:** Crown glass china on buffet, pr. of Aristocraft arm chairs (CM927C).

And more...Call us with your "wish list."

Buy/Sell/Rent



"A Visual Fantasy"

As much a museum as it is a gallery, Art & Industrial Design contains an array of treasures gathered from around the world to delight the eye and intrigue the fancy. A resource for many great public institutions, museums, and private collectors, the gallery features a choice selection of decorative arts of the 20th century. Among the prized items offered are original furniture by such influential designers as Donald Deskey, Gilbert Rohde, Wendell Castle and Isamu Noguchi, major examples of the ivory and bronze sculptures of Preiss and D. Chiparus, Daum crystal, Hagenauer sculptures, glass by Schneider and Lalique, and art deco clocks by Frankel, Weber and Rohde. Rare and often unattainable elsewhere, much of Art & Industrial Design's collection is literally unique -- and all of it is important.

& INDUSTRIAL DESIGN SHOP

ART

SPECIALIZING IN:

- * American Deco
- * English Deco
- * Italian Glass
- * Bedroom Sets
- * Tables & Chairs
- * Buffets
- * Bars
- * China Cabinets
- * Art
- * Paintings
- * Sculptures
- * Industrial Designs
- Select from our world famous collection

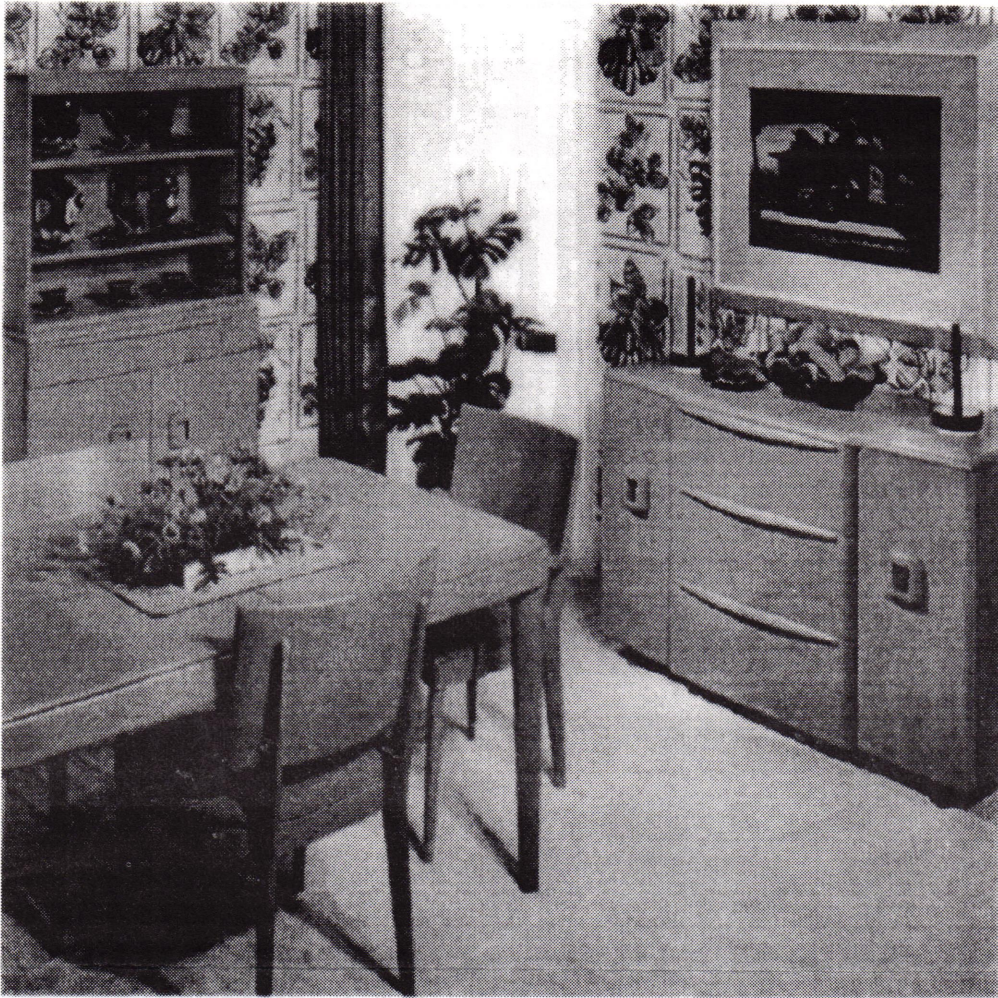


ART & DESIGN OF THE 20TH CENTURY

We buy and sell the following artists:
DONALD DESKEY
GEORGE NELSON
ROHDE
SAARINEN
KNOLL ASSOC.
MARCELLO FANTONI
VENINI GLASS
SEGUSO
D. CHIPARUS
COLINET
ORREFORES
GOLDSCHIEDER
K. HARING
VERNER PANTON
FULVIO BIANCONI
PICASSO
MIRO-
K.F. HAGENAUER
WILLIAM SPRATLING
and many more !!

399 Lafayette Street @ 4th St. / New York City

212-477-0116 / FAX 212-477-1420 / HRS: MON-SAT 12-7PM



Heywood-Wakefield Company, Gardner, Mass.



Furniture with the
Enduring Quality
of Fine Sterling

The Heywood-Wakefield emblem is a trusted symbol of modern furniture with the same enduring quality which makes sterling a prized possession. Quality is a Heywood-Wakefield tradition.



You're Smart to Plan Your Home Around "Home-Planned"

IT'S smart shopping - smart planning to make Heywood-Wakefield Modern your first choice! You'll buy it because it's so right in styling and usefulness for today. Your satisfaction will grow with each passing year, because this modern is so liveable, thanks to the skillful use of curves to temper its lines to friendliness. You'll be delighted, too, with the way its versatile "Wheat" or "Champagne" finishes go so beautifully with such a variety of decorating treatments.

Important, too, is the advantage of the exclusive Heywood-Wakefield "Home-Planned"

designs. This means you can add new pieces as you need them with full certainty that they will harmonize perfectly with those you purchase now for living room, dining room and bedrooms.

Remember, too, that the Heywood-Wakefield emblem is your assurance of fine woods, fashioned superbly by craftsmen with a tradition of more than a century of fine furniture making. Do see Heywood-Wakefield Modern soon at your favorite furniture or department store specializing in quality furniture.

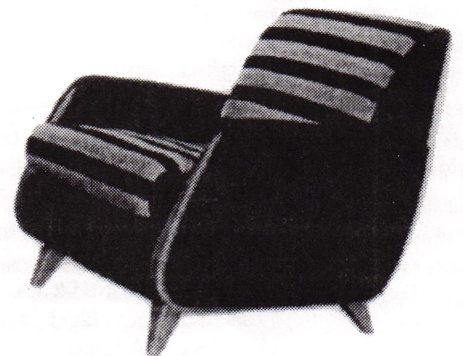
modern

Cadillac Jack

Featuring the largest selection of Heywood-Wakefield furniture in the country

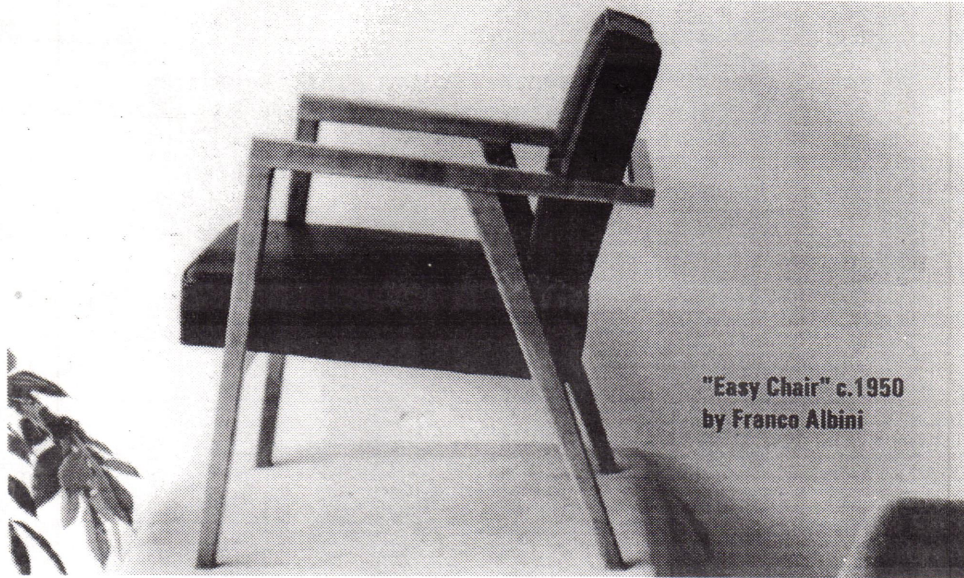
- Total restoration available
- Buy, sell, trade

800-775-5078



Inviting comfort and practical usefulness make Heywood-Wakefield Modern first choice for every room.

WANTED
COLLECTIBLES
KNOLL
H. MILLER
JUHL
AALTO
NOGUCHI
VENINI E.T.C.
20TH CENTURY CLASSICS
 Tel: 214-880-0020
 Fax: 214-351-6808
 3107B Ruth Street Dallas, TX 75201



"Easy Chair" c.1950
 by Franco Albini

Eames-Style Modular Cabinets

Inspired by Charles and Ray Eames' never-produced 1946 "Casegoods" plywood project, The No Name Woodshop has designed its Modular Cabinet System to accommodate the storage needs of today. MCS cabinets, infinitely customizable with adjustable shelves, sliding or hinged doors, or CD, cassette, or curio-display sized drawers, are supported by sturdy bench bases. Custom built to your order, the MCS is available in your choice of finishes.

Write, call or FAX for a free brochure and price list. All orders placed before the next issue of the Echoes Report will receive an introductory discount.



No Name Wood Shop
 Custom Woodworking

1016 Morse Avenue, Suite 23, Sunnyvale, Ca 94086
 408-734-2315/FAX 408-730-9872



NELSON BALL CLOCKS

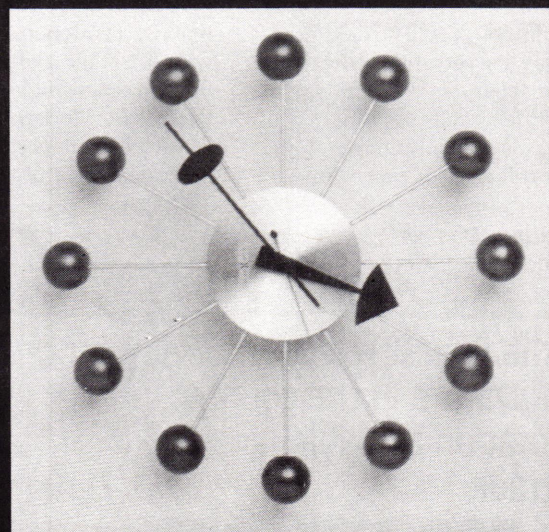
Restored to Original Condition
 with Battery Mechanism

\$350. + \$15. shipping/handling

Choose Birch, Orange, Red, Purple or
 Multi-Colored Balls

Send Cashier's Check or Money Order to:
VANDERHAGEN INTERIORS
 17853 Santiago Blvd., #107-114
 Villa Park, CA 92667
 (714) 445-8300

Hurry! Quantities are limited!





Jacques-Pierre Caussin,
Chuck and Kim Zuccarini
announce the opening of their gallery

MODERNAGE

25 N. Saginaw

Pontiac, MI 48342

phone (810) 745-0999 fax (810) 745-9598

An impressive collection of
20th Century Decorative Arts in the
glamorous, circa 1930s, set-up of
a former jewelry store

20TH CENTURY AUCTION

AUGUST 27 CHICAGO, ILLINOIS USA

*Arts & Crafts
Art Nouveau, Art Deco
European Ceramics
1950s / Modern Design
Italian & Scandinavian Glass*

*Color Catalogs \$30. Foreign \$40.
Everything Guaranteed
Delivery Worldwide
Absentee Bids Welcome*

TREADWAY GALLERY

2029 Madison Road
Cincinnati, OH 45208 USA
513-321-6742 Fax: 513-871-7722



Charles Eames upholstered baton-leg swivel chair, rare "compas" desk by
Jean Prouvé for the office of Henri Prouvé, c.1951



Exceptional original Marcel
Breuer plywood side chair

Stuart Waldman Auctions and Unique & Antiques AUCTION SALES

presents a

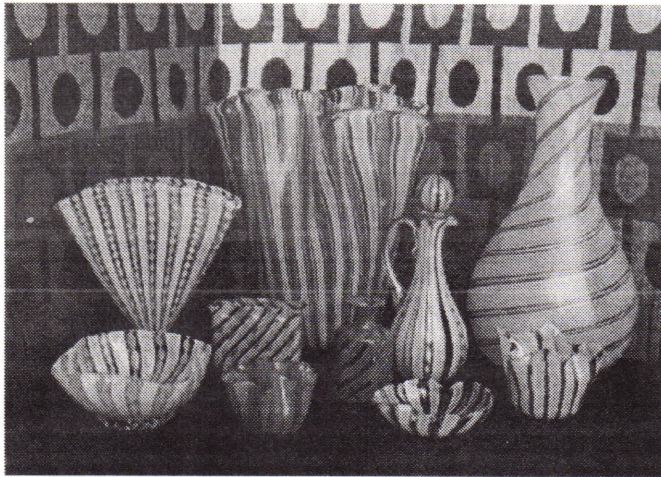
20TH CENTURY DESIGN AUCTION

• Deco to Moderne •

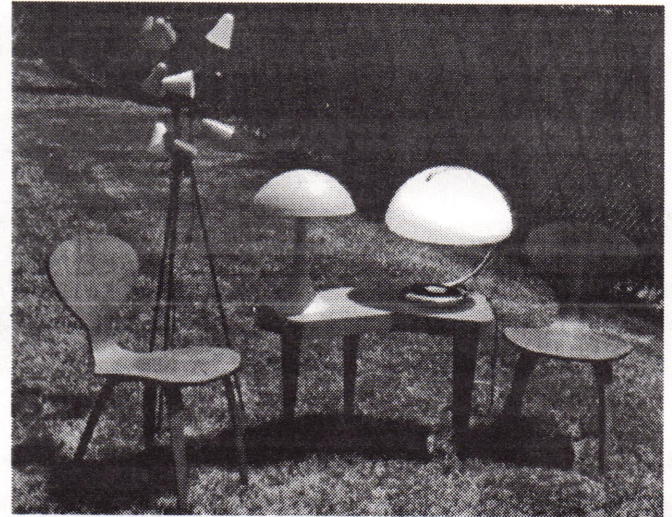
September 14th, 1995, 6PM

204 N. Chester Pike, Glenolden, PA

(10 minutes from I-95 and the Philadelphia Int'l Airport.)



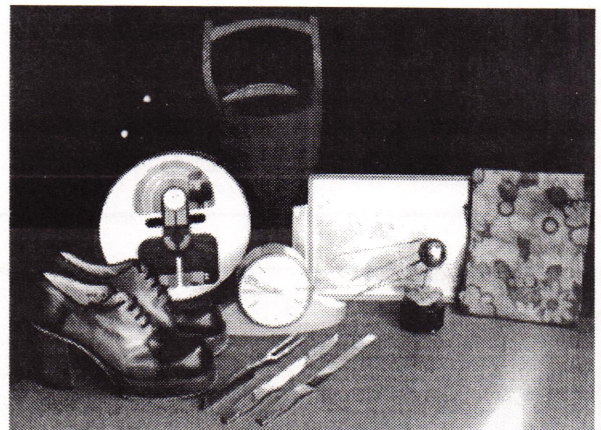
Glassware by Venini, Murano, Higgins, Seguso, Orrefors, Daum, Muranese, Sommerso, Bullicante, Flygsfors, Salvaiti, Wirkkala, Ollers and other Italian, American and Scandinavian design glass.



Furniture by Harry Bertoia, Richard Schultz, Heywood Wakefield, Knoll, Herman Miller, Isamu Noguchi, Wassily Chairs, "Cloud" table, Eero Saarinen, Verner Panton, George Nelson, and other important furniture makers.



Pottery by noted Swedish, Italian and American designers.

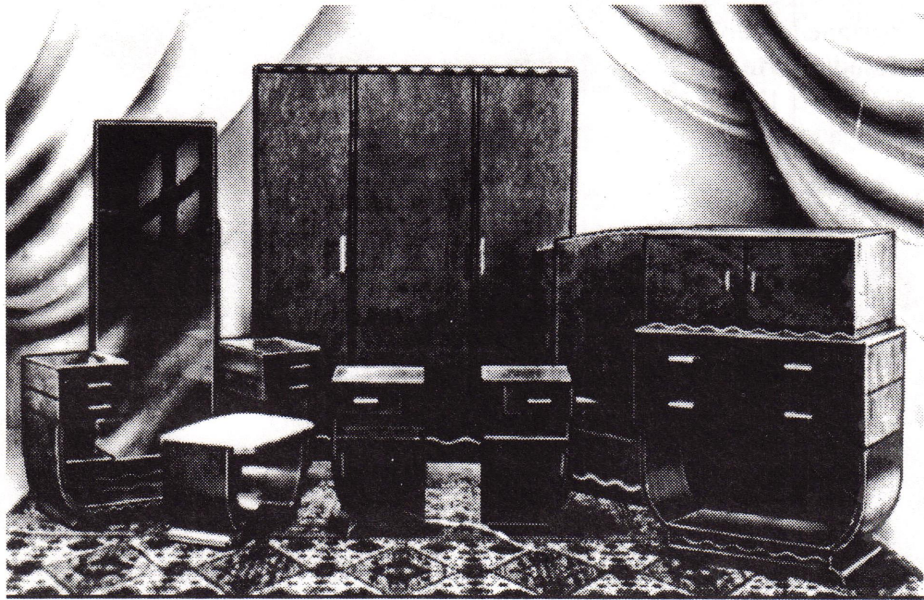


Lighting by Lightolier, Martinelli - Luce, Luxo Italiano. A diverse variety of clocks, rugs, fabrics, textiles, clothing and accessories.

Catalog and color brochure available
Quality consignments still being accepted
Absentee bids accepted • 10% Buyer's Premium

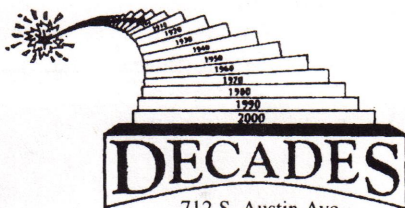
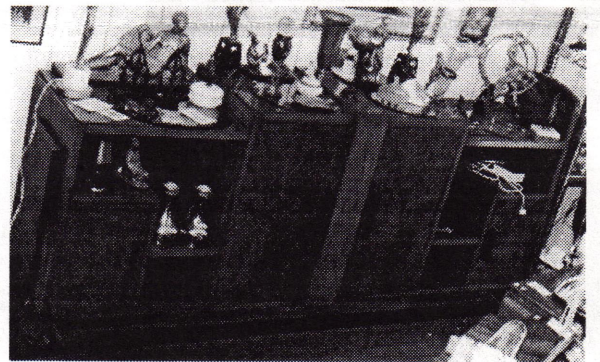
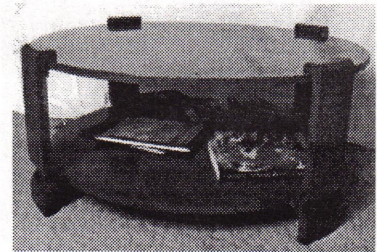
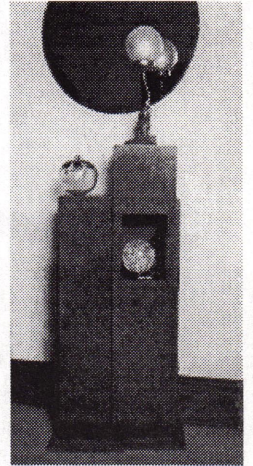
(800) 449-0707

Pa lic #AH64L/AU2507L

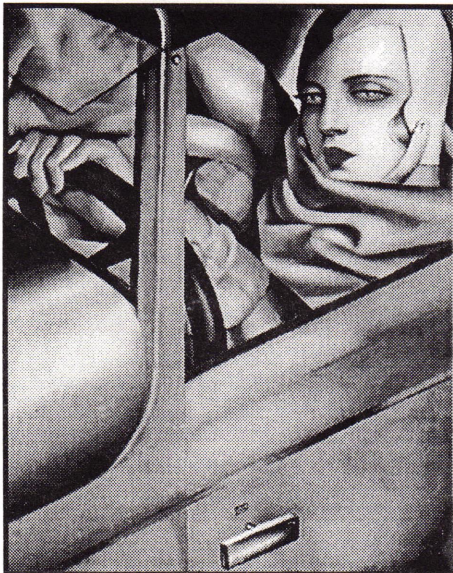


Retiring

Need to move these fantastic Deco furniture suites, 7 pieces each. One is ideal for a lobby, waiting room, or such. The other is a gentleman's bedroom suite. Both are attributed to DOMINIQUE, Paris 1925. Wood is Ambonia.



712 S. Austin Ave.
(on the square)
Georgetown Tx 78626
512-869-0448



**The Original Auto Portrait painting
by Tamara de Lempicka
is being offered for sale**

■
23 3/4" x 17 3/4"
oil on canvas
signed by the artist
\$83,750.00
(508) 428-2324

LESLIE HINDMAN AUCTIONEERS

**20th Century American
and European Design
Auction
November 12 and 13, 1995**

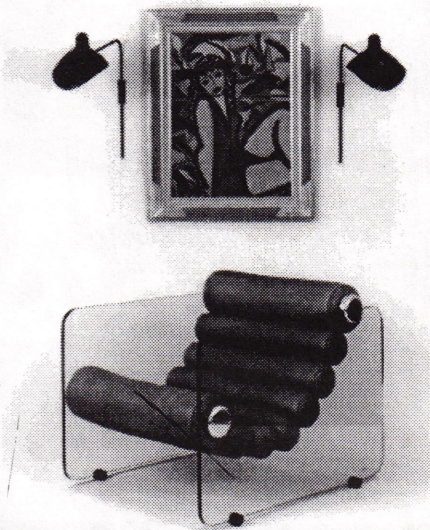
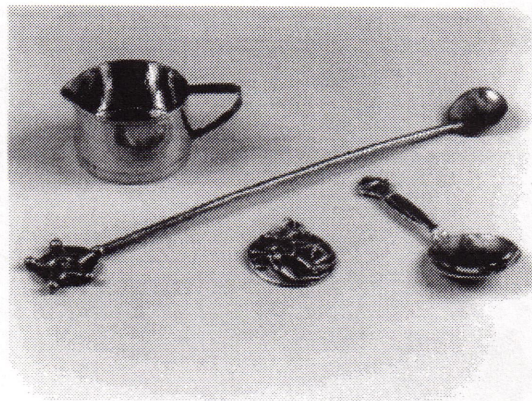
Including Arts and Crafts, Art Deco and Modern furniture, decorative arts, and fine arts by designers and artists such as Mies van der Rohe . Spratling . Eames . Saarinen . Platner . Paulin . Loewy . Mouille . Evans . Handel . Tiffany . Lalique . Barovier . Taxco and many more

We are accepting consignments for this auction. For a free confidential evaluation of your 20th Century items, please contact Marcus Tremonto at (312) 670-0010, extension 245. For information regarding buying and selling at Leslie Hindman Auctioneers, please contact our offices.

The Midwest's Leading Auctioneers

215 West Ohio Street, Chicago, Illinois 60610
Telephone: (312) 670-4248

Featured (from left to right) are a Lebolt creamer, Spratling spoon, Margot pendant and Georg Jensen spoon, designed by Johan Rohde, during our November 12 and 13 auctions.

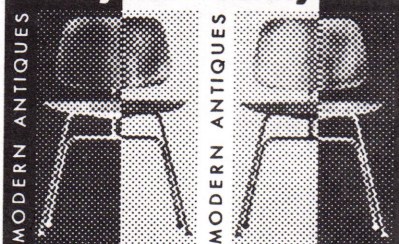


Among the highlights of the 20th Century American and European Design Auction are Fabio Lenci's hayline lounge chair, wall sconces by Serge Mouille, and a painting by Suzanne Bertillon entitled *Baigneuse*.

A strong collection of jewelry will highlight the 20th Century Design Auction, including this pair of earrings designed by William Spratling.



denny burt denny burt



213-936-5269 213-936-5269

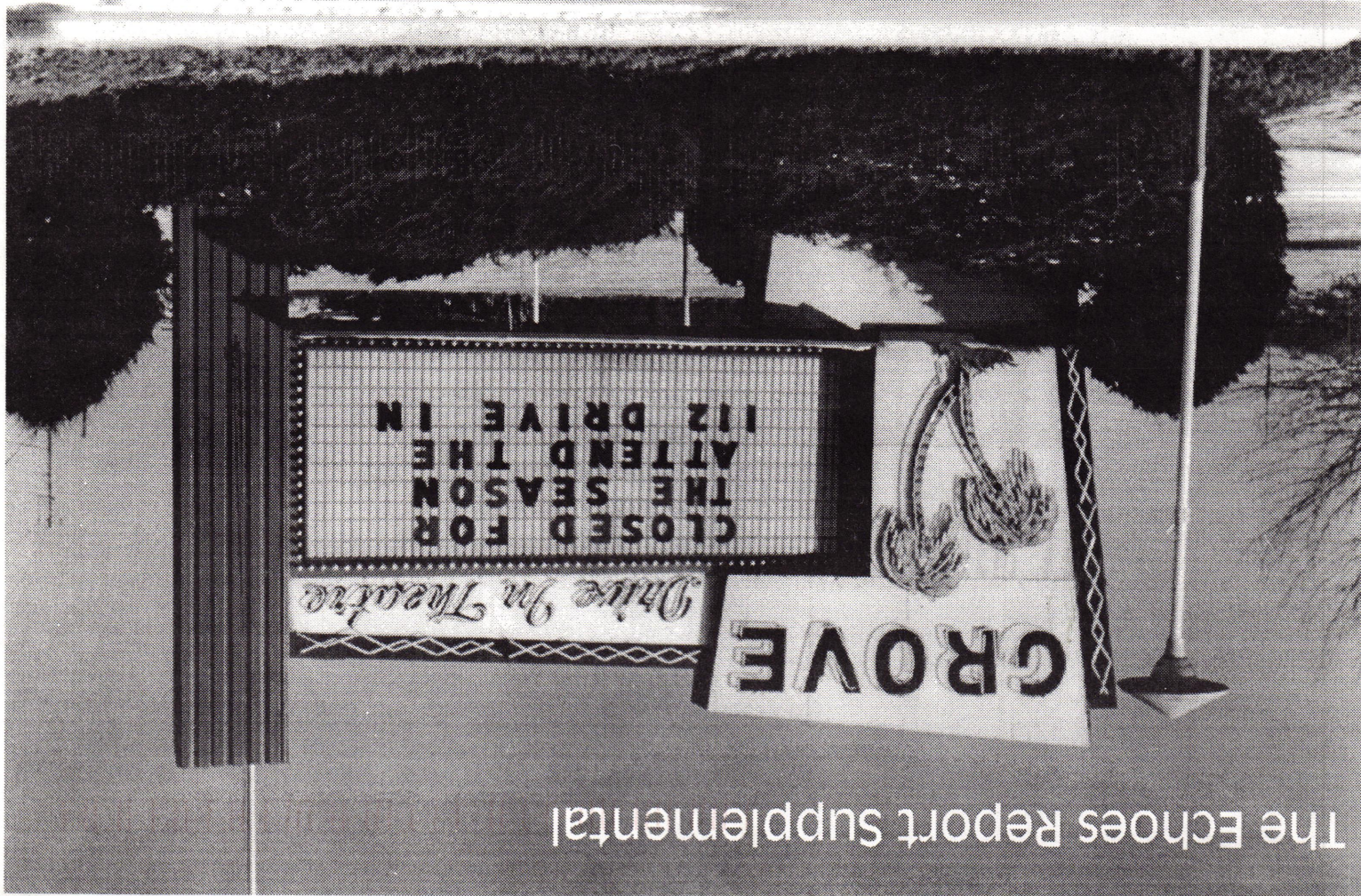
7208 MELROSE AVENUE LOS ANGELES, CA 90046

DENNY BURT modern antiques
213 936-5269 213 936-5267 (fax)

20TH CENTURY DESIGN

furniture, pottery, glass, lighting, metal, textiles, toys
Tues-Sat: Noon-6pm





The Echoes Report Supplemental

ECHOES
REPORT

PO Box 2321
Mashpee, MA 02649

WE DELIVER 011 SPFLD, MA DCR #2

Bulk Rate
U.S. POSTAGE
PAID
COVINGTON, KY.
Permit No. 152

Louis C. Emond Jr
34 Robin Hood Dr.
Seekonk, MA 02771

1930s

1940s

1950s

1960s