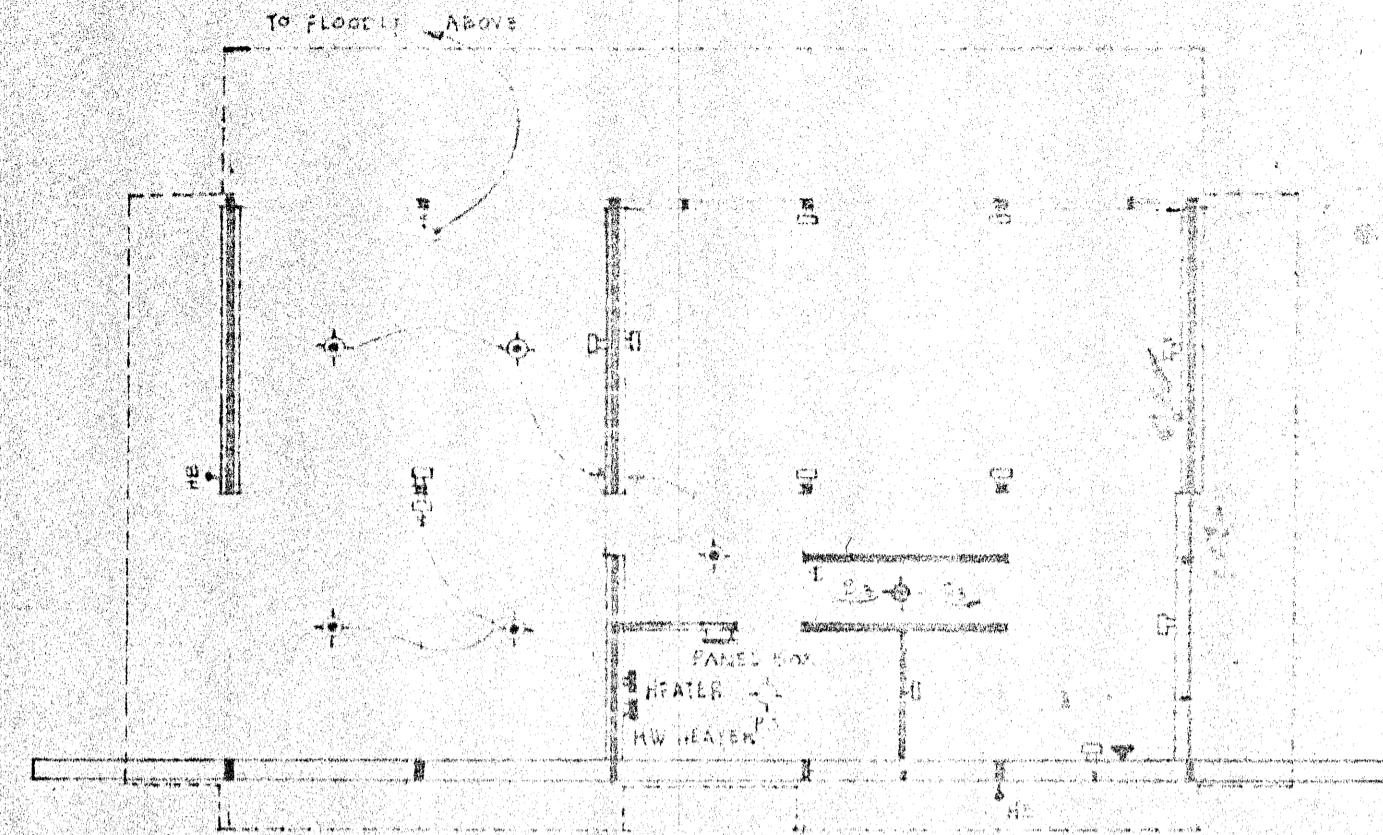


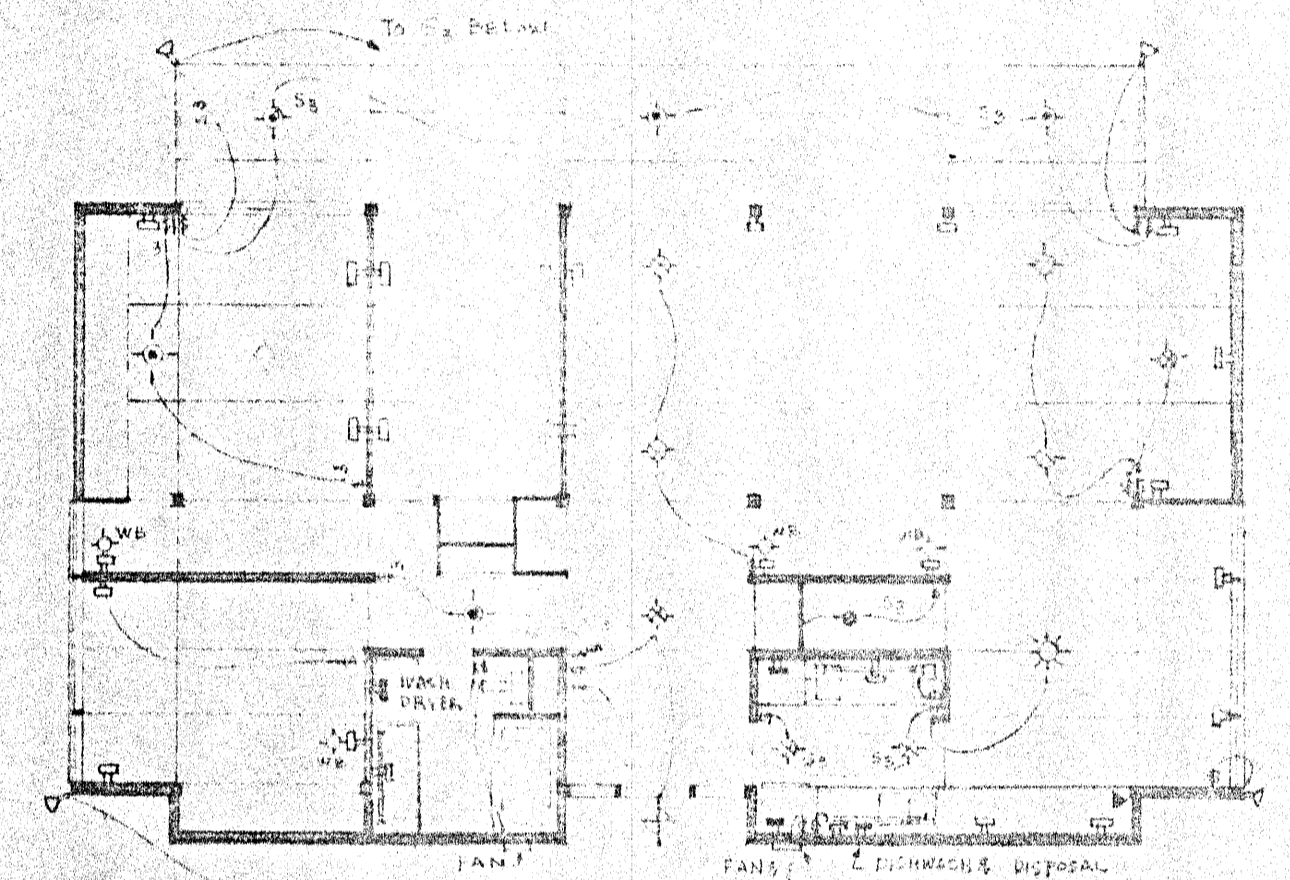
FIRST FLOOR FRAMING PLAN

ALL JOISTS 2" X 2" @ 16" O.C. UNLESS NOTED OTHERWISE. LOCATION OF FLUES, DRAINS, HEATING DUCTS & REGISTERS NOTED.



BASEMENT WIRING PLAN

1/8" = 1'-0"



FIRST FLOOR WIRING PLAN

1/8" = 1'-0"

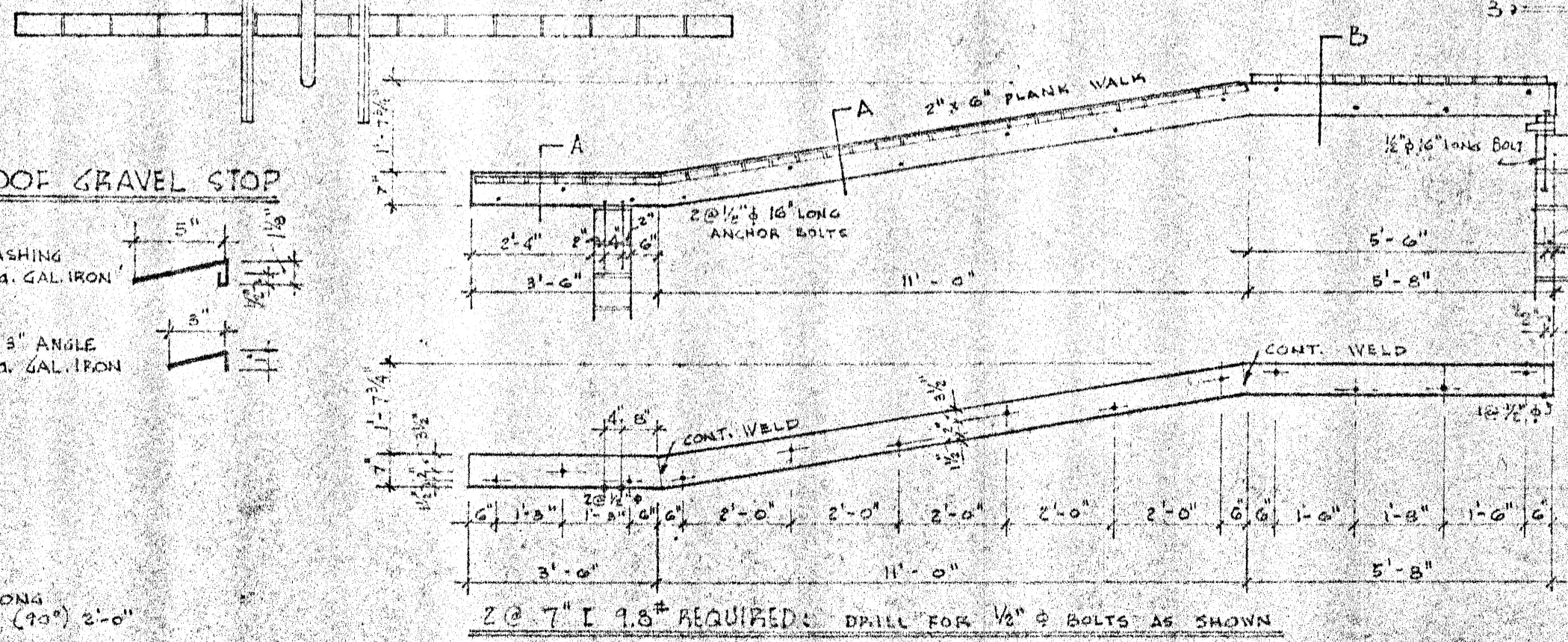
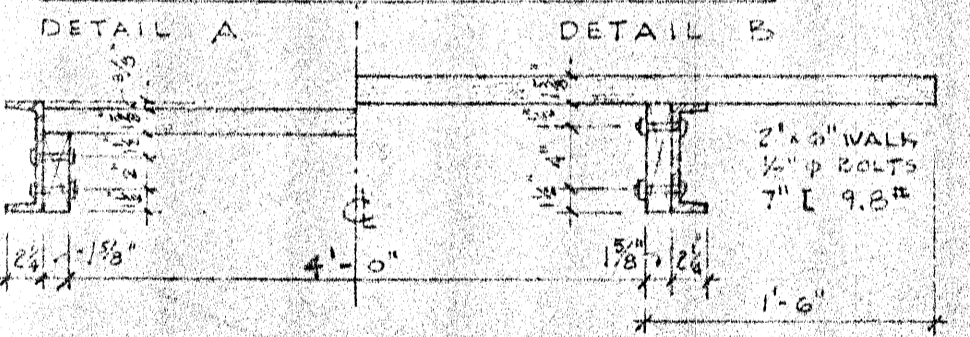
SYMBOLS

- SWITCH
- 3-WAY SWITCH
- ⊕ DIMM SWITCH
- ⊖ OUTLET BOX
- ⊕ 40W FLUORESCENT
- ⊖ FLOOD LIGHT
- ⊕ TELEPHONE OUTLET
- ⊖ DUPLEX ONLY OUTLET
- ⊕ SPEC. APPLIANCE

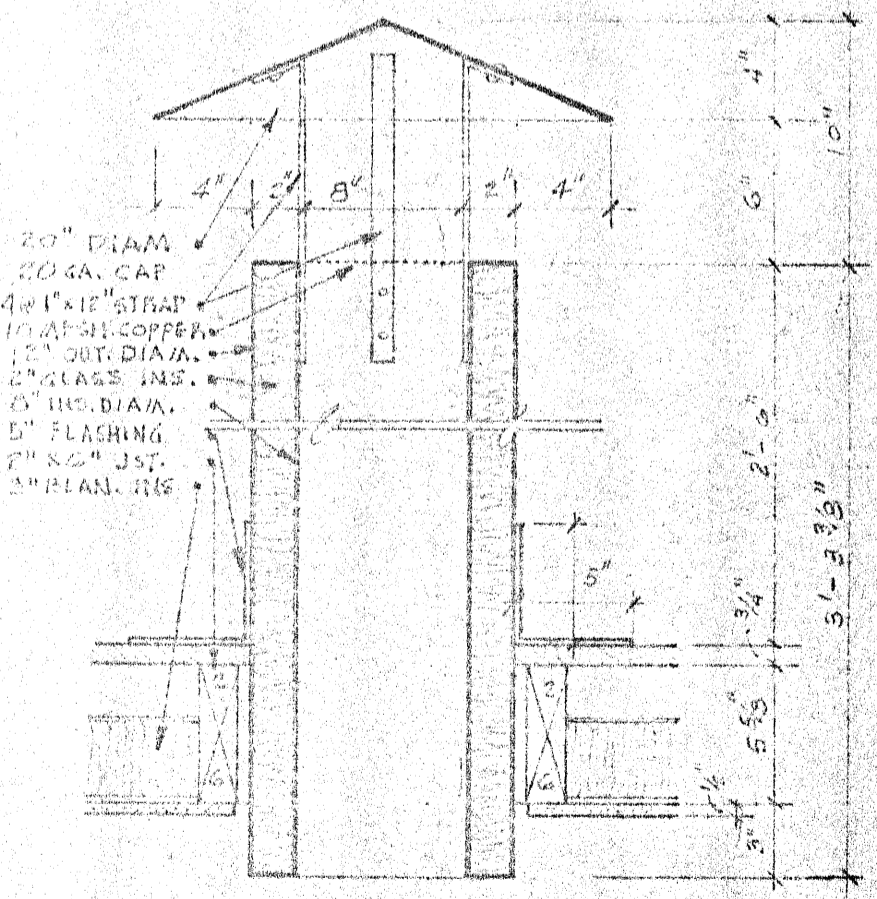
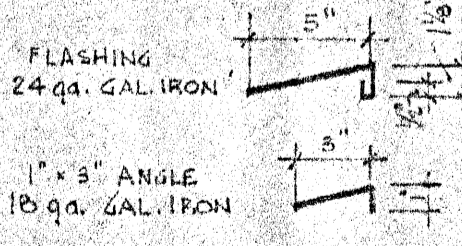
FIXTURE SCHEDULE

- 4 LITTECRIST BOWL
- 1 " 600 WALL BRACKET
- 1 " 801
- 1 " 812
- 1 " 813
- 1 " 814
- 1 " 815
- 1 " 816
- 1 " 817
- 1 " 818
- 1 " 819
- 1 " 820
- 1 " 821
- 1 " 822
- 1 " 823
- 1 " 824
- 1 " 825
- 1 " 826
- 1 " 827
- 1 " 828
- 1 " 829
- 1 " 830
- 1 " 831
- 1 " 832
- 1 " 833
- 1 " 834
- 1 " 835
- 1 " 836
- 1 " 837
- 1 " 838
- 1 " 839
- 1 " 840
- 1 " 841
- 1 " 842
- 1 " 843
- 1 " 844
- 1 " 845
- 1 " 846
- 1 " 847
- 1 " 848
- 1 " 849
- 1 " 850
- 1 " 851
- 1 " 852
- 1 " 853
- 1 " 854
- 1 " 855
- 1 " 856
- 1 " 857
- 1 " 858
- 1 " 859
- 1 " 860
- 1 " 861
- 1 " 862
- 1 " 863
- 1 " 864
- 1 " 865
- 1 " 866
- 1 " 867
- 1 " 868
- 1 " 869
- 1 " 870
- 1 " 871
- 1 " 872
- 1 " 873
- 1 " 874
- 1 " 875
- 1 " 876
- 1 " 877
- 1 " 878
- 1 " 879
- 1 " 880
- 1 " 881
- 1 " 882
- 1 " 883
- 1 " 884
- 1 " 885
- 1 " 886
- 1 " 887
- 1 " 888
- 1 " 889
- 1 " 890
- 1 " 891
- 1 " 892
- 1 " 893
- 1 " 894
- 1 " 895
- 1 " 896
- 1 " 897
- 1 " 898
- 1 " 899
- 1 " 900

SECTION THRU ENTRY RAMP

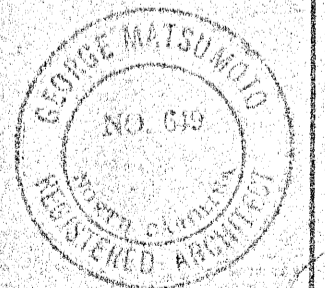


ROOF GRAVEL STOP



I.P. FIREPLACE FLUE CAP
 8" I.D. & 12" O.D. FLUE (20 GA. G.I.) 5'-3 3/8" LONG
FURNACE FLUE SIMILAR
 5" I.D. & 12" O.D. FLUE (20 GA. G.I.) APPROX. 12'-6" LONG WITH ELBOW (90°) 2'-0"

2 @ 7" I 9.8 REQUIRED: DRILL FOR 1/2" Ø BOLTS AS SHOWN



RESIDENCE FOR MIKI & GEORGE MATSUMOTO
 FRAMING HEATING & WIRING PLANS

DATE: 11-15-52 JOB NO. #5204 SHEET 8 OF 11 SHEETS
 GEORGE MATSUMOTO, A.I.A., RALEIGH, N.C., ARCHITECT