

Clem Labine's

# TRADITIONAL BUILDING

Historical Products For Today's Professional

S E P T E M B E R / O C T O B E R 1 9 8 8 V O L . 1 N O . 1 \$ 3 . 0 0

in this issue:  
special pullout  
door & window hardware  
chart



## NEW CEILING MEDALLIONS IN MIRACLE MATERIAL

**H**ave a project where you'd like to use polymer ceiling ornament — but fire codes forbid it? Then consider the new miracle substitute for synthetic polymers: Plaster. Plaster ornament doesn't burn, captures molded detail crisply, and will take any finish.

Advanced Architectural Cornices, Inc., has just introduced 4 new plaster medallions to complement the Dura-Cornice line of plaster cornices it has been marketing for rehabilitation and new construction.

The plaster is cast over fiberglass matting, which adds strength to the final product and reduces weight. To get them to the job site in good shape, the manufacturer carefully packs the cast products in sturdy wood boxes and ships via express truck service. (We had two medallions shipped to us here at TRADITIONAL BUILDING, and they arrived in perfect condition.)

The medallions are large — ranging in diameter from 25-1/8" to 38-1/8". Thickness is about 2-1/2", allowing for superb dimensional richness and clarity of detail.

The products meet Class 1 Fire Code requirements. (Unlike polymer materials, plaster doesn't release toxic gases during a fire.) You can get data on flame-spread and smoke-generation tests from the manufacturer.

The plaster cornices, which are similarly reinforced with fiberglass, come in 12-ft. lengths. Sizes range

*continued on page 10*

perspective

# Architorture Vs. Neo-Traditionalism

In this charter issue of TRADITIONAL BUILDING, we're doing more than introduce a new publication; we're also introducing two new words: Neo-Traditionalism and Architorture.

**NEO-TRADITIONALISM:** *New design that uses historic forms for inspiration in a sensitive and intelligent way, without necessarily copying the past. Neo-Traditional buildings refer to their historic antecedents in a respectful and loving manner.*

**ARCHITORTURE:** *A brutal, mocking, uninformed, or absurd handling of historic forms, either in restoration or new construction.*

The mission of TRADITIONAL BUILDING is simple: to bring you and other building professionals the latest information on where to buy the best in historically styled products. But that mission gets involved with larger issues: restoration and preservation projects of the past decade have made historical ornament popular for new construction as well. The historic look is "in."

However, much of what is being called "Post-Modern" construction I find painful to my sensibilities. The historical allusions are often clumsy, or a parody, or in the case of the Palladian Palace illustrated here, downright silly.

Those of us who love historic architecture, and who feel that it has a great deal to teach us about beauty and enduring values, are delighted to see more and more designers utilizing traditional forms in their buildings. But melding historic forms and ornament into contemporary architecture is not simple. If it were, there wouldn't be so much clumsy Post-Modern architecture around.

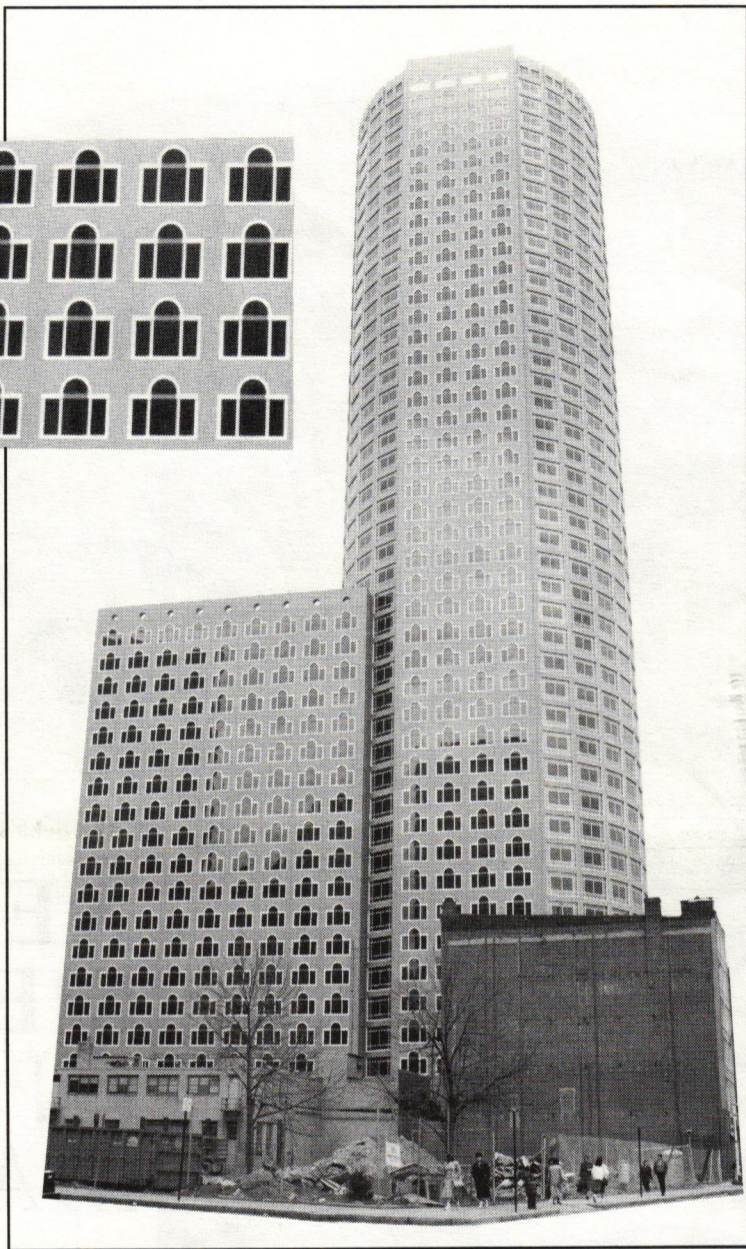
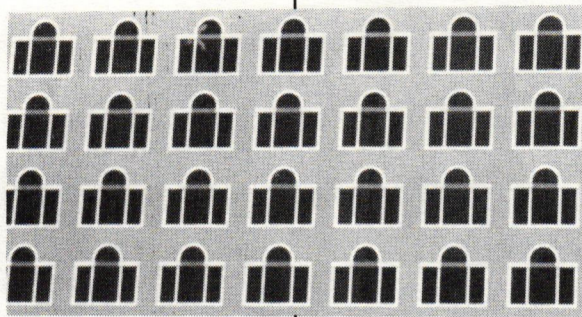
The Palladian Palace is a case in point. Obviously, the architect and the client thought the building looked fine. But to this observer, the result is a travesty. The classic Palladian window form has been plastered all over a standard curtain-wall box and tower. Originally meant to be a major accent in an entrance bay, the Palladian window here has been trivialized by repetition. To me, it's a classic case of Architorture.

I have a lurking suspicion that some designers have found it too hard to manipulate historic ornament in a sensitive or sophisticated way. So in-

stead, they treat historic forms as a joke. That way, they are insulated from criticism; they can always say, "Hey, I was just kidding!"

But many other architects are using historic themes as a source for exciting and beautiful buildings (see next page). This has led to an entirely new architectural style that we're calling Neo-Traditionalism — to differentiate it from the hodgepodge of Post-Modernism.

Our purpose at TRADITIONAL BUILDING is to encourage BOTH sensitive rehabilitation and intelligent use of historic forms in new construction. We do this



Architorture in the First Degree: Palladian windows with dime-store detailing plastered to a curtain wall in monotonous profusion. . .



. . .While a mile away, a single elegantly detailed Palladian window fills its original role as an accent for a central entrance bay on this 1796 Federal house designed by Charles Bullfinch. (Photo: Society for Preservation of New England Antiquities.)

letters

Dear Editor:

What a great idea: a trade newspaper that deals exclusively with historical building products. Architects and other building professionals should be aware of the expanding supply of high-quality traditional products available today. Unfortunately (as I know from personal experience), lots of the best sources are small and hard to find, and most of them don't appear in the pages of the architectural magazines. So anything you can do to make it easier to find these suppliers will be much appreciated.

Good luck.

**Bernard Rothzeit, FAIA**  
Rothzeit, Kaiserman Thomson & Bee  
New York City

Dear Editor:

It was with much regret that I learned Clem Labine had sold Old-House Journal. I am delighted to hear he has undertaken this new publishing venture. There is a tremendous need to show people how to be more sensitive to the methods and materials of old buildings when dealing with restoration and preservation projects. I find that so often "good intentions" disrupt the delicate balance between the structural components and historic fabric with the introduction of modern solutions. The closer a project can conform to the original in workmanship, materials, and construction techniques, the less stress is placed on the building as a whole. I applaud TRADITIONAL BUILDING's efforts to address these needs on a national scale.

**Sherry J. Kilgore**  
Historic Preservation Specialist  
Tennessee Historical Commission



**Historical Products For Today's Professional**

199 Berkeley Place  
Brooklyn, NY 11217  
(718) 636-0788

Editor & Publisher **Clem Labine**

Managing Editor **Tricia Martin**

Art Director **Judith Siegel Lief**

Advertising Production **Michael Isaacs**

Circulation **Mollie Williams**

A Note To Contributors: TRADITIONAL BUILDING solicits reviews of historical products from building and preservation professionals. A query letter to the editor describing the product and scope of the review is suggested. Photos of outstanding examples of Neo-Traditionalism and Architorture are also sought. While we will be careful of all materials submitted, we cannot be responsible for non-receipt or loss; please keep copies of all materials sent. Payment for contributions is sent upon acceptance.

TRADITIONAL BUILDING (ISSN 0898-0284) is published bimonthly by Historical Trends Corp., 199 Berkeley Place, Brooklyn, NY 11217. Telephone: (718) 636-0788. Subscription rate to professionals in architecture, construction and preservation in the U.S. and possessions: \$18/yr. Rate for nonprofessionals and subscribers outside U.S.: \$30/yr., U.S. funds.

Contents of Traditional Building are fully protected by copyright and must not be reproduced in any manner whatsoever without written permission from the publisher.

© Copyright 1988 by Historical Trends Corporation. All rights reserved.

primarily by bringing you the best in historical products in each issue (and by tossing out the stuff we think is junk). And we'll be showing you excellent restorations as well as outstanding examples of Neo-Traditionalism. But as an additional part of this mission, we won't be able to resist pointing out buildings where the use of historic forms is silly or perverse. In other words, Architorture. ♦

*Clem Labine*

**Seen any good examples of Architorture Or Neo-Traditionalism?**

We're inviting readers of TRADITIONAL BUILDING to submit photos of good examples of either Neo-Traditionalism or Architorture. (Black & white photos are best.) We'll pay \$50 for any examples used in print. Send photos to: Editor, TRADITIONAL BUILDING, 199 Berkeley Place, Brooklyn, NY 11217.

## traditional building profile

# ANN BEHA: Putting Art Back In The Building Arts

by Clem Labine



Once upon a time, architects thought restoration work stifled creativity. "There's no heat, no excitement! Restoration is just the reworking of old ideas," intoned the Imperial Wizard of all Architecture. "Let us assign all restoration work to our peasants who don't have the wit and vision for new design."

And thus it was for many years in the Kingdom of Design. But while the Wizard ruled from his International Style palace, he was unaware of stirrings in the Village below. The brightest Young Men and Women of the Village became fascinated by the old run-down palaces of the Kingdom. And they began to fix them up.

After a decade of work on the older palaces, the Young People found themselves bursting with ideas and energy. Their heads were full of the designs and patterns that once had been the Glory of the Realm. So the Young People of the Kingdom of Design began to build new palaces. And what they built was, in many ways, influenced by the old.

"The People will revolt," prophesied the Wizard. "They will never accept reactionary design."

But the People did not revolt. They rejoiced because the new palaces reminded them of the bygone days when there was sunshine and singing in the Kingdom. The People were glad and urged the Young Designers to build more in their new style. And they did.

As for the Wizard: he disappeared into his International Style palace and was never seen again.



Ann Beha's preservation planning work on such projects as the Massachusetts State Capitol (background) . . .



. . . and restoration of Fench House at Wellesley College . . .  
(Architects: Ann Beha, Marilyn Brockman, for Ann Beha Associates. Photo: Herb Engelsberg.)



. . . has led to such Neo-Traditional projects such as this addition to the Dedham Country and Polo Club, Dedham, Massachusetts . . .  
(Architects: Ann Beha, Donald Klema, & Mary McKenna, for Ann Beha Associates. Photo: David Hewitt.)



. . . and this delightful design for the Bayberry Hill Golf Club, Yarmouth, Massachusetts.  
(Architects: Ann Beha, Frank Cheney, for Ann Beha Associates.)

There are many who think the above fable bears a striking resemblance to our times. That being the case, one of the heroines of the Kingdom of Design would be Ann Beha, the principal owner of Ann Beha Associates in Boston, Mass.

Like the young people in our fable, Ann has spent over a decade building a reputation as one of the country's foremost restoration architects. And now, she is helping to shape a whole new style of American architecture . . . a style heavily influenced by America's old buildings.

But don't call her designs Post-Modern. Ann's style is too refined and sophisticated to be tossed into the Post-Modern stewpot. Her work, and the work of an emerging group of architects schooled in the subtleties of restoration, cries out for a new name. We'll call it Neo-Traditional.

## Origins of A Preservation Practice

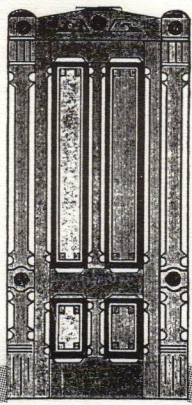
Ann Beha started small. Shortly after graduating from MIT's architecture program in 1975, she set up Ann Beha Associates. Her thesis project at MIT had confirmed her initial suspicions that she loved preservation. The thesis project concerned rehabilitation of the First Baptist Church of Cambridge. Beha's involvement extended beyond the technical aspects of restoration; she also found a tenant for surplus space in the complex, providing some badly needed income for the small congregation.

One preservation job followed another . . . resulting today in a roster of blue-chip clients that includes, among others, Harvard University, Wellesley College, Cambridge Historical Commission, Trinity Church (the H.H. Richardson landmark), and the New England Conservatory of Music.

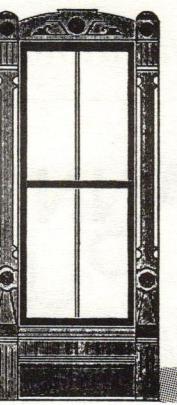
By now, Beha Associates' reputation has spread beyond the Boston area. One of the firm's happy clients is the New York Landmark Conservancy. Laurie Beckelman, Executive Director of the Conservancy recalls: "I was extremely reluctant to hire a Boston architect to do work in New York City. But the firm came so highly recommended I felt I had to give them a chance. And it turned out the reputation was well-deserved. Ann's firm did such excellent work on a preservation study of 22 of New York City's historic armories that I'm looking forward to hiring the firm again."

Jan C. K. Anderson, Executive Director of RESTORE, a non-profit preservation education organization based in New York City, concurs: "Ann is not only one of the best restoration architects in the U.S., but is also an outstanding and delightful individual. Her firm handles beautifully many projects that have very difficult preservation problems. She's an extremely capable architect in all respects."

continued on page 10



# HISTORICAL DOOR & WINDOW HARDWARE



**Many sources for high-quality historical hardware are small, so you won't find them in Sweet's. Here are the best ones we've tracked down.**

**P**roper door and window hardware provides one of the first visual clues that a project has been thoughtfully detailed. High-quality hardware offers tactile rewards, too: it's immensely satisfying to grasp substantial, silky metal in your hand and hear the swooshing sound of closely mated parts engaging and disengaging.

Yet, since hardware installation comes at a project's end, hardware specification is frequently put off until the last minute. Or sometimes the project is over budget and cutbacks and compromises are made in the hardware specs — cheapening the look of the work exactly where it is most noticeable.

With this special section on historical door and window hardware, the editors of TRADITIONAL BUILDING hope to expand your range of choices . . . and to ensure that budget cuts (if they have to be made) are made elsewhere.

There's a lot of exciting historical hardware around. Some of it precisely duplicates historic originals. Others are loose adaptations of historic designs, modified for ease of production. As long as the quality is there, both classes of historical hardware have their place.

Precise reproductions, naturally, are best suited for restorations — although some discriminating clients demand historic authenticity in new construction, too. Adaptations may be perfectly satisfactory for new construction where historical accuracy isn't critical.

## Exclusive Clip-And-File Chart

Tricia Martin has compiled the accompanying clip-and-file chart covering 22 hardware companies we think will be of greatest interest to you.

Obviously, the chart doesn't include every company that purports to sell traditional hardware. These are the suppliers who, in the opinion of the editors, offer the best combination of quality and traditional styling.

There were three criteria for inclusion in the chart: (1) The products had to have a pleasing historical look (in the opinion of the editors), whether they were an authentic reproduction or a contemporary adaptation; (2) The company had to have a reputation for product quality and satisfactory customer service; (3) Products had to be available in commercially significant quantities. This last factor ruled out many small custom producers who, while they may have excellent quality and service, can't fill large orders on short notice.

You'll notice that a few of the listed companies are advertisers in TRADITIONAL BUILDING. Most are not. Whether a company advertises or not had no bearing on its inclusion or exclusion from the chart.

The companies we've listed as "Additional Sources" are ones that may be satisfactory suppliers, but which didn't meet all of our selection criteria for the main chart. We couldn't get enough information on some of them to evaluate their product quality and service. In one case, the company's reputation for uneven product quality and spotty customer service kept it as an also-ran.

As for Baldwin Hardware, we've included them in the chart because they have a reputation for

decent product quality. However, we couldn't discover the secret of how to get their full catalog. So all you'll find listed is their free, door hardware brochure.

On the chart, companies that sell mainly historically authentic reproductions are coded "H."

Companies whose main product lines are contemporary adaptations, we've coded "C". ♦

*For extra help with this feature report, the editors extend special thanks to: Ralph L. Walter, AIA, Whitman Ball of Ball & Ball, Linda Priebe of Restoration Works, and Linda Tiley of Williamsburg Blacksmiths. — CL*

## Checklist for Hardware Quality

### Brass & Bronze

**1. WEIGHT** — Does the piece have the heft of solid brass? (Use magnet to determine if it's brass.) Avoid brass-plated steel stampings and die cast items.

**2. MECHANICS** — Do the parts operate smoothly? Good snug fit on rivets and other fasteners?

**3. FINISH** — Poor workmanship shows up as surface roughness or unfinished areas. Minor sand pits are the natural result of sand casting — showing the piece was made by the same process as the original. A surface with no defects at all indicates the piece was made by modern methods (not necessarily bad), such as hot forging.

**4. LACQUERING** — Will manufacturer supply precise details on lacquering process? (Or does he fudge and say "Oh, we just spray it.") A dip or spray with a high-quality acrylic lacquer after thorough degreasing is best.

**5. ANCESTRY** — Does manufacturer make it clear whether he's supplying a historical reproduction or a loose adaptation?

### Wrought Iron

**1. WEIGHT** — Does the piece have the heft and feel of a substantial piece of hardware?

**2. MECHANICS** — Do the parts operate smoothly? Are fasteners snug and well finished?

**3. FORGING VS. STAMPINGS** — Does the piece have the flatness, smoothness and regularity of machine stamping, or does it have the contour and marks of hand forging? Some pieces have dimpling stamped on to simulate hand-forging. But the dimples will appear in the same place from piece to piece. True hand forgings always vary from one another. Material thickness varies, too. For example, hand-forged thumb latches range from under 1/16" on the "bean" part of the handle to just over 1/4" on the latch bar. Machine-made parts are much more uniform.

**4. SHAPING** — Hand-forging doesn't automatically guarantee quality. Some hallmarks of good hand work: softly beveled edges; angle bends that are crisp and not curved; curves smooth and even; twists symmetrical throughout the length of the twist; points tapered smoothly; and return bends that are smooth and centered on themselves.

**5. FINISH** — In the country, hand-forged iron was usually finished with linseed oil and ash to make it "black iron." In the city, the same pieces were frequently painted black. The best standard finish today is flat black lacquer. This will, with use, become partly shiny and partly worn away — imparting an antique patina.

## Coming Next: Historical Lighting

These clip-and-file special reports will be a regular feature in every issue of TRADITIONAL BUILDING. In the next issue, we'll list the best sources for period lighting, from the Early American through Post-Victorian periods.

Subsequent issues will contain special reports on old-fashioned streetscape equipment, architectural millwork, ornamental moldings (in both old and new materials), spiral stairs, traditional window styles, and traditional roofing.

### ABOUT CONTACTING THESE COMPANIES

If you need product catalogs for an immediate project, your best bet is to call or write to these hardware companies directly (please mention TRADITIONAL BUILDING).

On the other hand, if you need catalogs to update your files, it may be more convenient to use the Product Information Card inserted in this issue, or the Form on page 21.

COMPILED BY TRICIA MARTIN

COMPANY	SPECIALTY	DOOR KNOBS		LEVER HANDLES	IRON THUMB LATCHES	BACK PLATES		ROSETTES/ESCUTCHEONS		DOOR HINGES		IRON STRAP HINGES	BOX LOCKS		MORTISE LOCKS		DOOR KNOCKERS		DOOR PULLS		CREMONE BOLTS	SLIDE BOLTS	CASEMENT HARDWARE	SASH PULLS		SHUTTER HARDWARE	CUSTOM WORK
		Brass/Bronze	Glass			Ceramic/Porcelain	Brass/Bronze	Ceramic	Brass/Bronze	Iron	Brass/Bronze		Iron	Brass	Iron	Brass	Iron	Brass	Iron	Brass				Iron	Brass/Bronze		
<b>Acorn Manufacturing Co., Inc.</b> P.O. Box 31 - Dept. TB Mansfield, MA 02048 (617) 339-4500 (800) 835-0121	Reproduction Colonial & Elizabethan forged iron hardware, including H, H-L, strap, & butterfly hinges. Literature free when requested on letterhead, or send \$5 for full-line catalog. <b>(H)</b> Circle 56				■					■		■							■			■				■	
<b>Anglo-American Brass Co.</b> P.O. Drawer 9487 - Dept. TB San Jose, CA 95157 (408) 246-0203	Solid brass reproduction Renaissance & Victorian hardware made by the sand cast, cold-chamber die cast, or lost-wax process. Will also custom-make hardware. Catalog free when requested on letterhead. <b>(H)</b> Circle 57	■			■		■		■		■														■		
<b>The Antique Hardware Store</b> 43 Bridge Street - Dept. TB Frenchtown, NJ 08825 (201) 996-4040 (800) 422-9982	Reproduction Victorian hardware for doors & windows. Also has a large selection of bathroom fixtures & fittings. Catalog free when requested on letterhead. <b>(H)</b> Circle 58	■	■	■	■	■	■	■	■	■		■	■	■	■	■	■	■	■	■	■	■	■	■	■	■	■
<b>Baldwin Hardware Corporation</b> 841 E. Wyomissing Blvd. Box 15048 - Dept. TB Reading, PA 19612 (215) 777-7811	Hot forged brass hardware adapted from historic models but not true reproductions. Free brochure. <b>(C)</b> Circle 59	■	■		■		■		■		■				■		■		■		■	■					
<b>Ball &amp; Ball</b> 463 West Lincoln Highway Dept. TB Exton, PA 19341 (215) 363-7330 FAX (215) 363-7639	Ball & Ball manufactures the most complete in-stock collection of authentic reproduction 18th & 19th century hardware in brass, bronze & iron. Custom work and repair of metal locks & hardware. Free mini-catalog, or send \$5 for complete catalog. <b>(H)</b> Circle 8	■	■	■	■	■	■	■	■	■	■	■	■	■	■	■	■	■	■	■	■	■	■	■	■	■	■
<b>Cirecast</b> 380 7th Street - Dept. TB San Francisco, CA 94103 (415) 863-8319	Custom hardware manufacturer. Handsome stock patterns for Victorian hardware. All hardware handmade using the lost-wax process, producing excellent detail. Send \$2 for brochure. <b>(H)</b>	■					■		■		■														■	■	
<b>Crawford's Old House Store</b> 301 McCall St. - Dept. TB Waukesha, WI 53186 (414) 542-0685 (800) 556-7878	Authentic reproduction door, window, and cabinet hardware from Colonial to Victorian — newly crafted from original designs in brass, bronze, porcelain, or wrought iron. Call or write for free literature. <b>(H)</b> Circle 60	■	■	■	■	■	■	■	■	■	■		■	■	■	■	■	■	■	■	■	■	■	■	■	■	■
<b>Decorative Hardware Studio</b> P.O. Box 627 - Dept. TB Chappaqua, NY 10514 (914) 238-5251	Full-service hardware supplier. Imports & manufactures brass Renaissance hardware. Can restore & duplicate existing hardware. Send \$10 for complete catalog. <b>(C)</b>	■	■		■		■		■		■				■		■		■		■	■				■	
<b>Historic Housefitters Co.</b> Farm to Market Road - Dept. TB Brewster, NY 10509 (914) 278-2427	Selection of reproduction Early American brass & iron hardware. All items in stock. Send specs for quotes on custom work. Send \$3 for 32-p catalog. <b>(H)</b>	■		■	■	■				■	■	■	■	■				■	■		■			■	■	■	
<b>H.B. Ives</b> P.O. Box 1887 - Dept. TB New Haven, CT 06511 (203) 772-0310	Complete line of door & window hardware, casement hardware, & decorative solid brass hardware. Catalog free when requested on letterhead. <b>(C)</b> Circle 61	■			■													■		■			■	■	■	■	
<b>Kayne &amp; Son Forged Hardware</b> 76 Daniel Ridge Road - Dept. TB Candler, NC 28715 (704) 667-8868	Hand-forged Early American hardware. Custom work according to your specs, as well as repair and duplication. Brass Hardware Catalog is \$2, Hand-Forged Hardware Catalog is \$2, or \$3.50 for both. <b>(H)</b>	■				■			■	■	■	■	■					■	■				■		■	■	

# TRADITIONAL BUILDING'S HISTORICAL DOOR & WINDOW HARDWARE SourceList

COMPILED BY TRICIA MARTIN

COMPANY	SPECIALTY	DOOR KNOBS		Ceramic/ Porcelain	LEVER HANDLES	IRON THUMB LATCHES	BACK PLATES		ROSETTES/ ESCUTCHEONS		DOOR HINGES		IRON STRAP HINGES	BOX LOCKS		MORTISE LOCKS		DOOR KNOCKERS		DOOR PULLS		CREMONA BOLTS	SLIDE BOLTS	CASEMENT HARDWARE	SASH PULLS		SHUTTER HARDWARE	CUSTOM WORK
		Brass/ Bronze	Glass				Brass/ Bronze	Cer- amic	Brass/ Bronze	Iron	Brass/ Bronze	Iron		Brass	Iron	Brass	Iron	Brass	Iron	Brass/ Bronze	Glass							
Brian Leo Custom Hardware 7532 Columbus Ave. So.- Dept. TB Richfield, MN 55423 (612) 861-1473	Fine selection of bronze & brass/bronze Victorian hardware cast from antique originals. Custom work from your original designs. Catalog free when requested on letterhead. (H) Circle 15	■			■		■		■	■	■	■						■	■	■	■	■				■	■	
D.C. Mitchell Reproductions 1749 Old Wilmington Road Dept. TB Hockessin, DE 19707 (302) 998-1181	Early American door & window hardware, including door knockers, H & H-L hinges. Solid brass box locks a specialty. Catalog free when requested on letterhead. (H) Circle 62					■					■	■	■	■	■											■	■	
Old Smithy Shop Box 336 - Dept. TB Milford, NH 03055 (603) 673-0132	Hand-forged reproduction Early American hardware for interior & exterior use. Source of hard-to-find black pyramid-head & flat-head screws. Catalog free when requested on letterhead. (H) Circle 63				■	■						■	■						■	■	■					■	■	
Omnia Industries Box 330 - Dept. TB Cedar Grove, NJ 07009 (201) 239-7272	Brass hardware with a historical feel. From house numbers to interior latchsets to mortise locks. Free brochure. Catalog \$10 to the trade, when requested on letterhead. (C) Circle 64	■			■				■		■					■		■				■	■					
H. Pfanstiel Hardware Co., Inc. Route 52 - Dept. TB Jeffersonville, NY 12748 (914) 482-4445	Imports & manufactures all-brass decorative hardware. Selection ranges from Renaissance to Georgian. Send \$7.50 for complete 96-pg. catalog in 3-ring binder. (C)	■			■				■		■					■		■		■		■		■		■		
Restoration Works, Inc. 810 Main Street - Dept. TB Buffalo, NY 14202 (716) 856-8000	Extensive selection of brass Victorian, Renaissance, & Classical hardware. Both imported and U.S. manufactured. Catalog free when requested on letterhead. (H) Circle 41	■	■	■	■		■		■		■					■		■		■		■	■	■	■	■		
Sign of the Crab 3756 Omec Circle - Dept. TB Rancho Cordova, CA 95670 (916) 638-2722	Brass Renaissance & Victorian hardware. Also carries brass plumbing fixtures & accessories. Catalog free when requested on letterhead. (C) Circle 65	■			■		■		■		■																	
Transylvania Mountain Forge Graystone Manor 2270 Cross Street - Dept. TB LaCanada, CA 91011 (818) 248-7878	Imported, high-quality collection of forged European hardware, from casement fasteners to postal knockers. Send \$2 for catalog. (H)					■					■	■	■					■	■	■	■			■				
The Village Blacksmith Shop Route 63 North - Dept. TB Goshen, CT 06756 (203) 491-2371	Individually hand-forged Early American hardware & iron accessories. Can duplicate original pieces or work from photographs & measured drawings. Catalog free when requested on letterhead. (H) Circle 66			■		■					■	■	■	■					■		■				■	■	■	
Virginia Metalcrafters 1010 E. Main Street - Dept. TB Waynesboro, VA 22980 (703) 949-9400	Authentic Colonial cast brass box locks & hinges. (Approved/licensed by the Colonial Williamsburg Foundation.) Send \$5 for catalog. (H)	■			■							■			■			■		■			■					
Williamsburg Blacksmiths, Inc. 1 Buttonshop Road - Dept. TB Williamsburg, MA 01096 (413) 268-7341	Authentic reproduction Early American door & window hardware in wrought iron, including Suffolk & Norfolk door latches. Catalog free when requested on letterhead. (H) Circle 67	■				■					■	■	■	■			■		■		■					■		

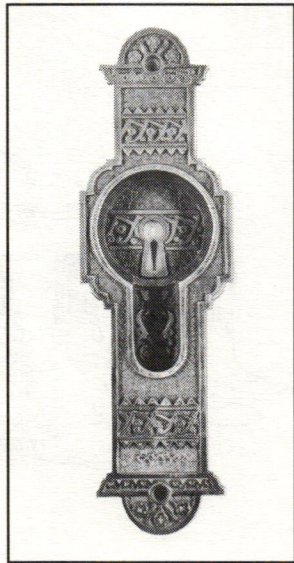
H: Historical Reproduction      C: Contemporary Adaptation

## Bronze Grips Slide Back Into Style

Brian Leo's reproduction sliding door grip, with its Anglo-Japanese motif, is a welcome change from the sleek, high-tech grips so often used today on pocket doors.

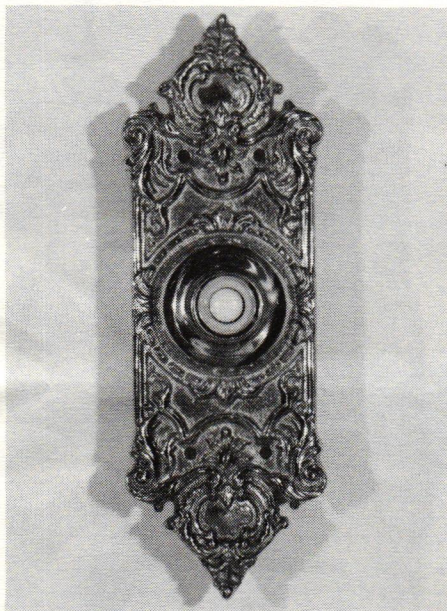
Cast in bronze using the lost-wax method, the grip has excellent detail and a handsome pattern. Offering good value for the price, the St. Paul door grip lists for \$25. Standard size is 9" x 2-3/4", but it can be made in different lengths (according to your specs). Quantity discounts are also available.

For more information about Brian Leo Custom Hardware, see pullout chart in this section. — TM



## CLASSY, BRASSY, DOOR BELL PLATE

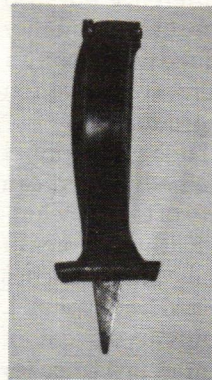
The first thing folks see when visiting a house is the front door and its surrounds. This pushbutton doorbell plate from Anglo-American Brass Co. is cast brass, and brings the elegance of a Victorian home, newly built or restored, to the front door.



Not your usual doorbell plate, this model is reproduced from a 19th-century original. The plate measures 7-1/2" x 2-3/8" and comes complete with the pushbutton mechanism (the button made from fine white porcelain). Wholesale price of \$14 is offered to professionals.

For more information about Anglo-American Brass Co., see pullout chart in this section. — TM

## Door Knockers In Iron



No lion's head or eagle rests atop this graceful door knocker. Historic Housefitters is now making these beautifully refined pieces out of hand-

forged iron — a material ordinarily used for more rustic designs. This door knocker is as comfortable on a 1790's Saltbox as on a newly constructed Colonial.

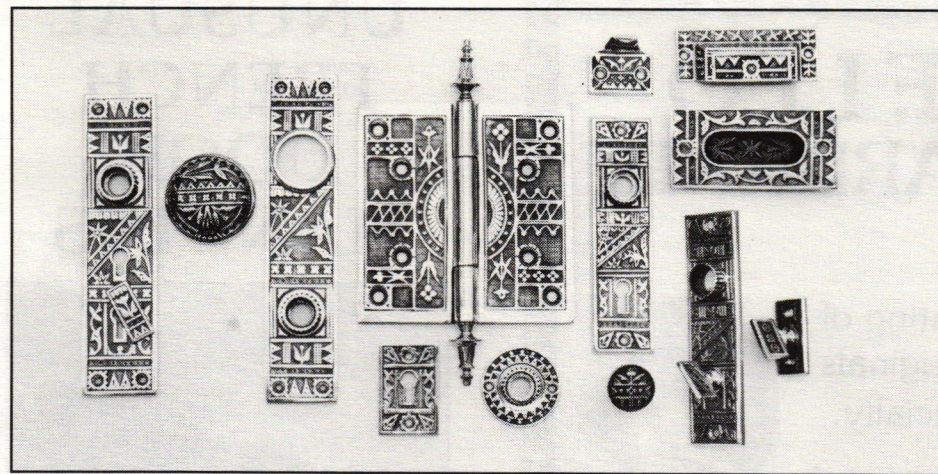
The Colonial-style door knocker measures 7-1/2" high by 1" wide. List price is \$36.00. Shipping and handling charges are additional.

For more about Historic Housefitters, see pullout chart. — TM

## The Ultimate Hardware Suite

If you have a project where you want a knock-'em-dead Victorian period look — and budget is not a major factor — then you'll want to look at the Lilly Suite from Cirecast. Cirecast is known primarily as a custom hardware manufacturer, but they also have some stock patterns that are precise copies of historic originals.

The company sells four suites of matching Victorian door and window hardware. The Lilly Suite (below) is our personal favorite; it consists of 14 separate hardware items, with coordinated Anglo-Japanese patterns typical of the 1880s.



Each piece is handmade in silicon bronze by the lost-wax casting process, which results in superb detail (as good or better than any bronze hardware we've ever seen). The metal has the warm color of old "red brass" with either a high polish or low sheen. Unless the client specifies otherwise, the pieces are sold unlacquered.

Superior quality doesn't come cheap. Typical retail prices (for single units): 5" hinge with high polish — \$92; door knob — \$45; recessed sash lift — \$20.

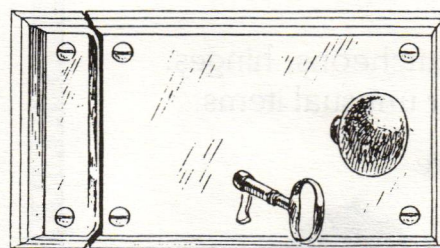
For more about Cirecast, see the pullout chart in this section. — CL

## Authentic Box Locks With Modern Security

Ball and Ball's X90 locks have both antique charm and modern convenience. Except for the cylinder mechanism, these locks are exact reproductions of a 1740's original, unlike loose adaptations marketed by other manufacturers. Like the originals, these locks have a thin brass box covering an iron plate on which the operating mechanism is mounted.

The Ball family pride in precise reproductions comes from their metal-working heritage, which can be traced back to a 1760 Philadelphia silversmith. Three generations of the Ball family currently practice their trade at the present location in Exton, PA.

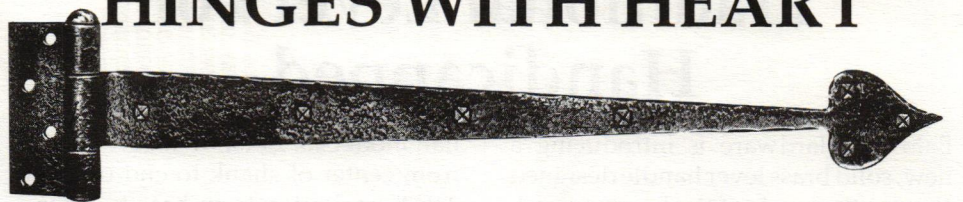
All X90 locks are furnished complete with 2 knobs, rosette, 9/32" square spindle, escutcheon with cover, keeper, screws, brass bit key, and keyed-alike or keyed differently



cylinder with keys. All brass locks are "Golden Glow" polished. Iron locks are also available and are painted flat black. Both are available regular (horizontal) or vertical, and left- or right-handed. Dimensions vary from 4" x 6" (brass or iron vertical) to 11" x 7" (brass regular). Prices range from \$275 to \$450.

For more about Ball and Ball, see pullout chart in this section. — TM

## HINGES WITH HEART



These days, you can get almost anything with a "country look." We've even seen papertowels with a country theme! It's nice to know that you can still get authentic forged-iron Early American hardware. No duck motif... no kitschy cutouts...

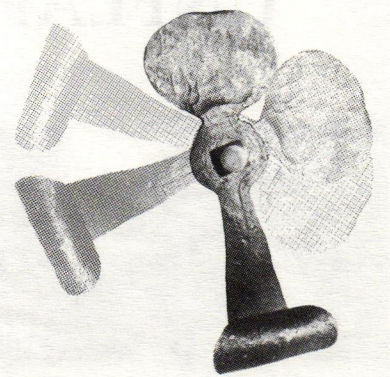
Acorn Manufacturing makes a strap hinge with the traditional heart design that was brought to this country from Europe by early settlers. Originals of this design can still be found on some 18th century homes. Reproductions are found on both res-

torations and newly built Colonials.

Acorn's strap hinges, shown above, come in 4 lengths: 9" and 13" (.120 gauge), or 17" and 20-1/2" (.155 gauge). The 9" and 13" hinges can be used full or half surface on interior doors. The 17" and 20-1/2" lengths are used for full-surface application on exterior doors up to 36" x 80" (175 lbs). Prices range from \$16.95 per pair to \$23.95 per hinge.

For more information about Acorn Manufacturing, see pullout chart in this section. — TM

## Shutter Dogs — Roll Over!



Most people today have probably forgotten that shutters are not vinyl things stuck to a wall alongside a window! They wouldn't know a shutter dog from a lap dog! But for those of us who know that shutter dogs are devices to hold shutters open...

Kayne and Son Custom Forged Hardware makes several styles of shutter dogs. Our personal favorite is the Bean shutter dog, shown above. All shutter dogs, including the "S" model (not shown), are fully rotational. The Price of the Bean Shutter Dog is \$20. Other styles of shutter dogs are available in brass or iron and range in price from \$10 to \$60.

For more about Kayne & Son, see pullout chart in this section. — TM

## A Lift For Window Sashes

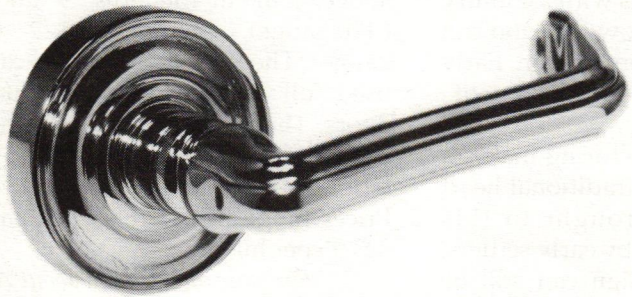
Window hardware is frequently less flashy than door hardware. So, when we came across The Antique Hardware Store's decorative flush lift, we were delighted at the prospect of being able to "dress-up" an ordinary, double-hung window. The lifts are heavy cast brass and are reproductions of a Victorian pattern. They are 5" x 1-3/4" and list for \$12.95 each (screws included).



For more about The Antique Hardware Store, see pullout chart in this section. — JL

## Traditional Lever For Handicapped

Baldwin Hardware is introducing a new, solid brass lever handle designed to meet the needs of the handicapped. While hardware designed with the handicapped in mind is not a new



idea, this is the first lever we've seen that meets the Handicapped Codes, is fire-rated, suitable for use in both commercial and residential structures, and has a traditional design.

The dimensions of the Savan-

nah model #8724 (shown), are: 4-3/4" from center of shank to end of lever; 2.812" projection from base to projection. The rose measures 2.625" in diameter. When mounted, there is a 1/2" space between face of door and return of lever and a 2" space between face of door and backside of lever, meeting Handicapped Code require-

ments in most states. Cost is approximately \$125 for trim only. Locks are also available and cost about \$160 additional.

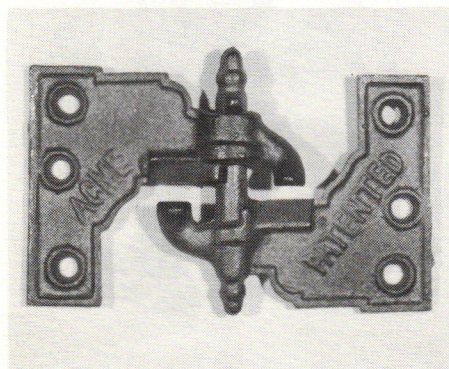
*For more about Baldwin Hardware, see pullout chart. — TM*

## siegel's scratchboard



*"That's what's wrong with adobe in Connecticut."*

## UNFLAPPABLE SHUTTER HINGES



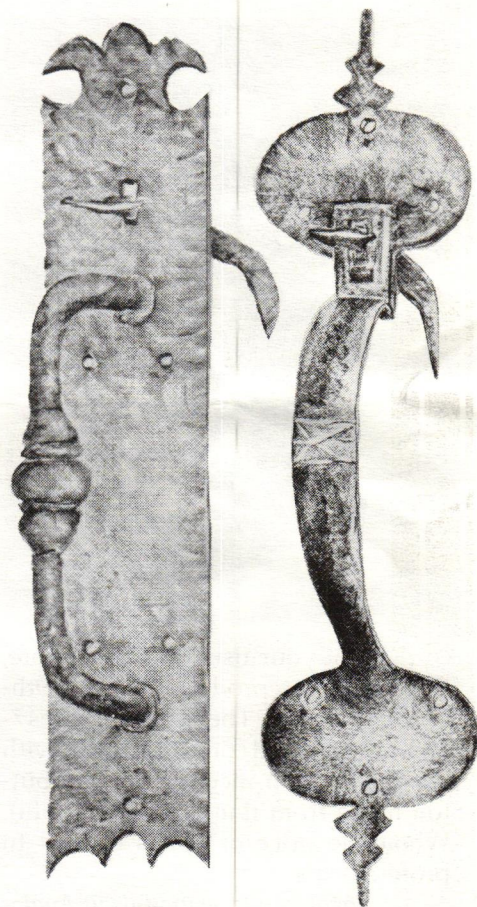
Remember that scene in *Key Largo* when Lauren Bacall and Humphrey Bogart are rushing around closing shutters during the big storm? And oh! how those shutters flapped — some even blew right off the house! If they had only known about Restoration Works' shutter hinges!

These shutter hinges work with gravity: when the shutters are closed, the weight of the shutter locks the hinge into place. The shutter is immo-

bilized until it is manually lifted and rotated into the open position. Hinges are made of durable cast iron and come in sets consisting of 2 right-handed hinges, 2 left-handed hinges, and 2 sets of fasteners (enough for one window). Price per set is \$18.30. Restoration Works also has a hinge that keeps the shutter locked in an opened position and sells for \$12 per set.

*For more about Restoration Works, see pullout chart. — TM*

## Forged Thumblatches



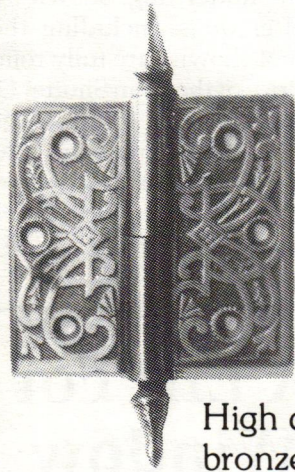
Have trouble telling the difference between a Suffolk and a Norfolk thumblatch? (Norfolk on the left; Suffolk on the right.) The catalog from Williamsburg Blacksmiths not only clearly shows the difference but also displays a wide variety of high-quality Early American hardware that's equally at home in a fussy restoration or a new Colonial reproduction.

Their Suffolk latches are forged with carefully beveled edges and can be made with a variety of ends, including bean and spade. Faithful copies of 18th century originals, these latches come with a Parkerized (phosphate), rustproofing coat plus a topcoat of low-sheen black lacquer. List price for Suffolk latches range from \$43 to \$75.

Norfolk latches started replacing Suffolk latches in this country around 1800. Williamsburg produces 9 different styles of Norfolk latches, two of which are available with brass or iron handles. List prices range from \$46 to \$70.

*For more information about Williamsburg Blacksmiths, see pullout chart in this section. — CL*

## BRIAN F. LEO CUSTOM HARDWARE



Replicating of your originals is a specialty.

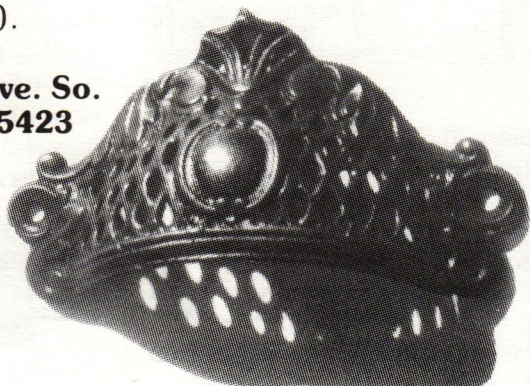


High quality hardware, cast in bronze, brass-bronze or other metals for renovation use or new construction.

Door knobs, escutcheons, hinges, levers, and other unusual items.

16 page brochure  
\$3.00.

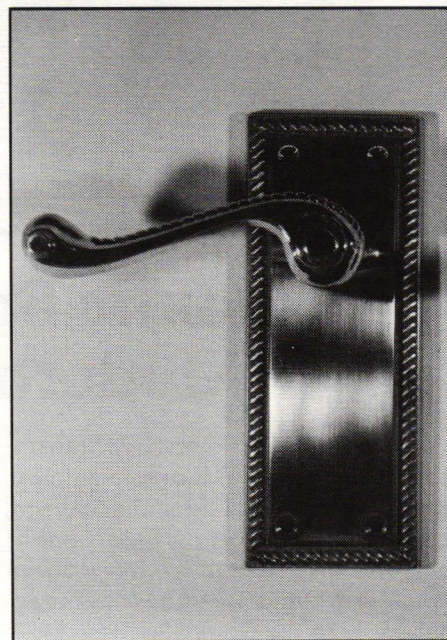
7532 Columbus Ave. So.  
Richfield, Minn. 55423  
(612) 861-1473



"Sure, I work hard at hardware all day. My cereal? Raaaw Bittts!"

Circle No. 15

## UNUSUAL FRENCH DOOR HANDLES

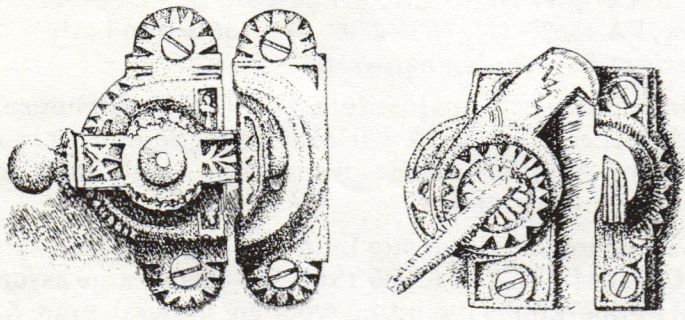


Restoration Works has a cast brass passage set ideal for French doors. The lever handle and spring are built as one unit. The strong springs are great for French doors, particularly the dummy side where no latch is used. The backplate measures 2-5/16" wide x 5-7/8" high; the lever measures 3-5/16" from return to center of cylinder. Available plain or with a decorative trim. List price is \$44 per set. Sets with privacy lock are \$46.20.

*For more information about Restoration Works, see pullout chart in this section. — TM*

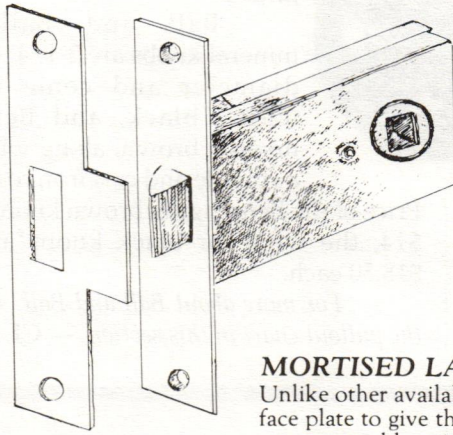


# BALL AND BALL



## COMPRESSION BRONZE SASH LOCKS

Our patterns for these exactly copy the appearance, and the operation of the originals.



## MORTISED LATCH SET

Unlike other available sets this one has a 4" high face plate to give the appearance of a larger lock at a reasonable price.

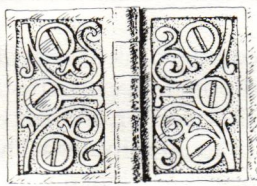
BALL AND BALL, founded in 1932 is proud to continue to offer the finest quality line of builder's hardware available.

Our experience includes park service and private restorations, from Alaska to St. Thomas, Maine to New Mexico.

Restoring or copying your original hardware is a specialty. Matching originals are available for hundreds of furniture and house hardware items.

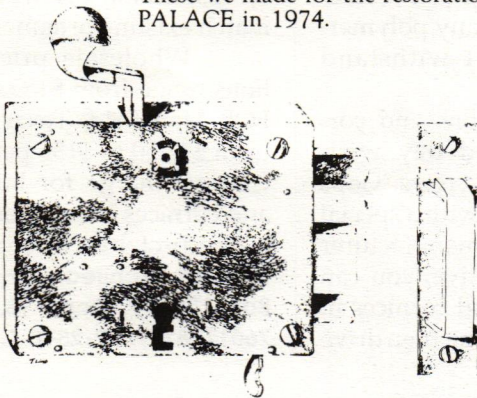
Watch our space in coming issues for "New" products.

Call or write for details and our FREE MINI-CATALOG. Or send \$5<sup>00</sup> for our complete catalog.



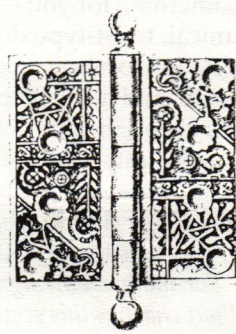
## INSIDE SHUTTER HARDWARE

In brass and cast iron were used in many homes. These we made for the restoration of IOLANI PALACE in 1974.



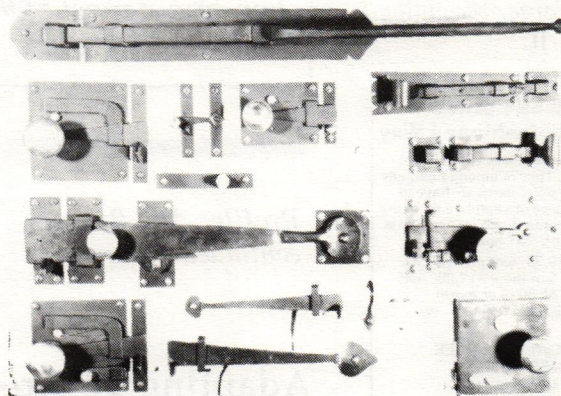
## DUTCH ELBOW LOCK

Made in the Pennsylvania German settlements from the 1730's, the unique lever allowed you to open the door with your hands full. We have many originals for sale.



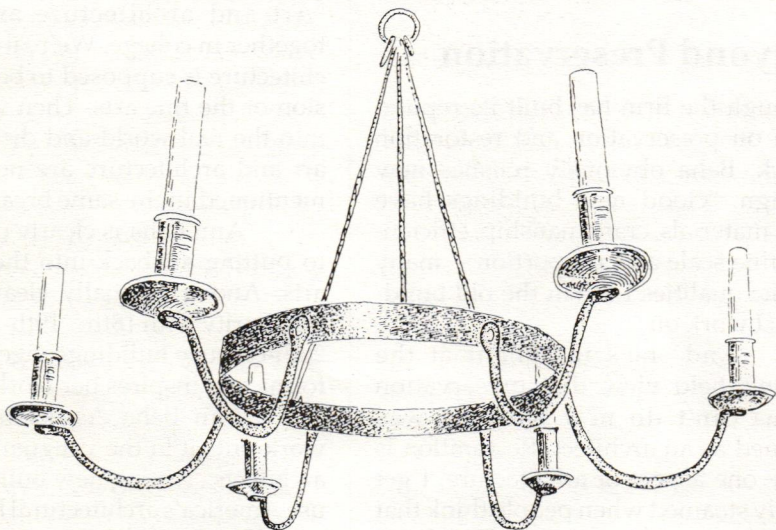
## DECORATIVE BUTT HINGES

Made during the 1800's of brass or iron. We have copied both, in a wide range of sizes and patterns. Our casting and assembly process allows long life and smooth operation.



## COLONIAL PERIOD HARDWARE

No other firm matches our quality, delivery, and variety of hardware of this type. We have hundreds of originals for sale, can copy your samples, and can supply the quantity you need, from 1 to 1000 pieces. We are suppliers for many National Park Service projects.



## BRASS TRIMMED IRON CHANDELIER

Patterned after an original, this light has been popular in rustic, or informal settings since we made the first one in 1965. We can make one to fit any application.

# BALL and BALL

Finest Quality Reproductions

463 W. Lincoln Hwy.

Exton, PA 19341

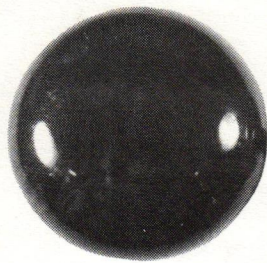
(215) 363-7330

FAX only (215) 363-7639

## Rare Mineral Doorknobs

Ball and Ball, of Exton, PA, has long been known for its precise replicas of Early American hardware. Now, in response to market demand, the firm is also offering Victorian hardware.

Amid the broad range of hinges, knobs, sash locks, and related Victorian pieces, what caught our eye were their mineral doorknobs. Quite rare now, ceramic knobs were a notable technical development of the 19th century. Patented in 1851 by John Pepper,



mineral knobs were used on thousands of locksets from Russell & Erwin, among others.

Ball and Ball's mineral knobs are 2-1/4" in diameter and come in white, black, and Bennington brown, along with a spindle and cast iron rose.

Price of the Bennington brown knob is \$14; the white or black knobs are \$18.50 each.

For more about Ball and Ball, see the pullout chart in this section. — CL

## Studs For The Tudor Look

Transylvania Mountain Forge stocks an item we found particularly interesting — black iron door studs.

The company offers three styles of these faceted screws which range from 5/8" to 1" in diameter. (One size is also available in brass.) The studs can be provided with either a gloss or low-sheen finish. They have a screw-back and, when attached to the surface, give the door an Elizabethan or Medieval "bolted-together" look.

Transylvania Mountain Forge imports their door studs from a European

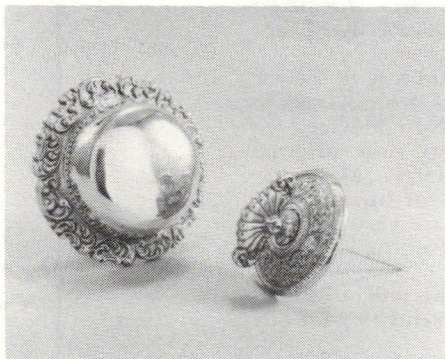
company, which has been in business for over a hundred years.

The door studs list from \$1.25 to \$1.47 each, depending on size and style. Delivery is 6 to 8 weeks.

For more information about Transylvania Mountain Forge, see pullout chart in this section. — JL



## TWIST-A-BELL



Tired of the same, old, standard, electric door bell? Sign of the Crab may have something for you — a Victorian, mechanical, twist-type door bell. This reproduction exists as two pieces: a 4" bell inside, and a 2-1/2" twist portion that fits through any standard door wall and mounts outside. This elegant set is solid brass, ready-to-mount, unlacquered (or lacquered upon request), and lists for \$10.50.

For more about Sign of the Crab, see pullout chart in this section. — JL

### FREE PRODUCT INFORMATION

Use the form on page 21 to get free product information about most of these hardware suppliers.

## Additional Hardware Sources:

▼ 18th Century Hardware, 131 East 3rd St. - Dept. TB, Derry, PA 15627 (412) 694-2708. Reproduction Early American & Victorian hardware.

▼ Door and Hardware Institute, 7711 Old Springhouse Road, McLean, VA 22102 (703) 556-3990. Source for information on Architectural Hardware Consultants and Certified Door Consultants.

▼ Gainsborough Hardware Industry, P.O. Box 3003 - Dept. TB, Chesterfield, MO 63006 (314) 532-8466. Large assortment of doorknobs including wooden, mineral, bone & crystal.

▼ P.E. Guerin, Inc., 23 Jane Street - Dept. TB, New York, NY 10014 (212) 243-5270. Suppliers of fine Early American, English, and French decorative brass hardware.

▼ G. Krug and Son, Inc., 415 W. Saratoga St. - Dept. TB, Baltimore, MD 21201 (301) 752-3166. Reproduction antique iron hardware.

▼ Renaissance Decorative Hardware Co., P.O. Box 332 - Dept. TB, Leonia, NJ 07605 (201) 568-1403. Brass & bronze doorknobs & escutcheons.

▼ Renovator's Supply, Renovator's Old Mill - Dept. TB, Millers Falls, MA 01349 (413) 659-2211. Wide selection of Early American & Victorian homeowner-grade reproduction hardware.

▼ Samuel B. Sadtler, 340 South Fourth St. - Dept. TB, Philadelphia, PA 19106 (215) 923-3714. Importers of reproduction 18th & 19th century box locks.

▼ The Smithy, Wolcott, VT 05680 (802) 472-6508. Custom hand-forged Colonial hardware.

### Plaster Medallions continued from page 1

from 3" x 3" to 4-3/8" x 13-1/8". They can be readily cut with a fine-tooth saw to make joints and mitred corners. Dura-Cornice medallions and cornices can be finished with water-, oil-, or lacquer-based coatings. (Many polymer-based ornaments can't withstand lacquer.)

Both the medallions and cornices can be installed dry with countersunk sheetrock screws. Gaps and joints are then filled with a special cornice cement that the manufacturer supplies. As an alternative, you can install the medallions and cornices in a bed of wet cornice cement, then drive

countersunk sheetrock screws for additional support. (Installation time per 12-ft. section of cornice is claimed to be 15 to 30 minutes.) The company furnishes a detailed video that illustrates the wet-bed installation method.

The company will also custom-cast plaster cornices and medallions for restoration jobs where you have to match existing ornament.

Wholesale prices for medallions range from \$185 to \$250 apiece, FOB Mansfield, Texas. Cornices run from \$47.50 to \$155 per 12-ft. section. Crating charge for both medallions and cornices is an additional 15%. For a product brochure, contact: **Advanced Architectural Cornices, P.O. Box 170597, Dept. TB, Arlington, TX 76017 (817) 572-2518. CSI# 09200 — CL**

### Protect Wall Corners The Great Old-fashioned Way

Our unfinished **Cornerbeads** compliment any period or decor. They're among hundreds of hard-to-find, "old style" items we have to enhance your old house or capture a bit of the past in your newer home. Each cornerbead is 47/8" x 1 1/4" dia., with 90° notch.

**Beechwood.** Ea. \$9.75; 6 or more \$8.75.  
**Oak.** Each \$13.50; 6 or more \$12.00. Add freight: \$2.50 (1-5); \$6.50 (6 or more). WI residents add 5% tax. VISA/MC, or AMEX accepted.

To Order Call TOLL-FREE  
1-800-556-7878  
In Wis.: 414/542-0685  
Or, send for more information.

**Crawford's  
Old House Store**

550 Elizabeth St. • Rm. 20 • Waukesha, WI 53186  
Dealer Inquiries Invited

Circle No. 22

### ADD ELEGANCE TO YOUR HOME WITH ANTIQUE HARDWARE

Authentic reproductions in brass, aluminum, iron, and porcelain. We manufacture quality traditional hardware, competitively priced.

Our duplication work is exceptional. We also clean and restore brass.

We have a complete line of hand-painted aluminum fire marks.

Send \$3. for our illustrated catalog.

18th Century Hardware Co., Inc.  
131 E. Third Street  
Drawer OHJ  
Derry, PA 15627

Circle No. 55

### Profile: Ann Beha continued from page 3

## Adapting To Growth

The growing reputation of Beha Associates has meant physical growth as well. Originally housed on the top floor of the Greek Revival townhouse on Beacon Hill restored by Beha and her husband, the firm moved five years ago to a gracious old building located not far from one of Beha Associates' largest projects: the Massachusetts State House. (The firm prepared a detailed preservation plan for the 500,000-sq.-ft. landmark.)

The company now has two principals, Ann Beha and Marilyn Brockman, plus six associate architects, a bookkeeper, and a secretary occupying the comfortable, well-lit renovated space. The businesslike atmosphere of the office is kept from becoming overly-serious by the presence

of Lucy, Beha's springer spaniel, who carries the job title of Office Mascot.

## Beyond Preservation

Though the firm has built its reputation on preservation and restoration work, Beha obviously relishes new design. "Good new buildings have rich materials, craftsmanship, efficiency, fine scale and proportion -- many of the qualities I see in the old buildings I work on."

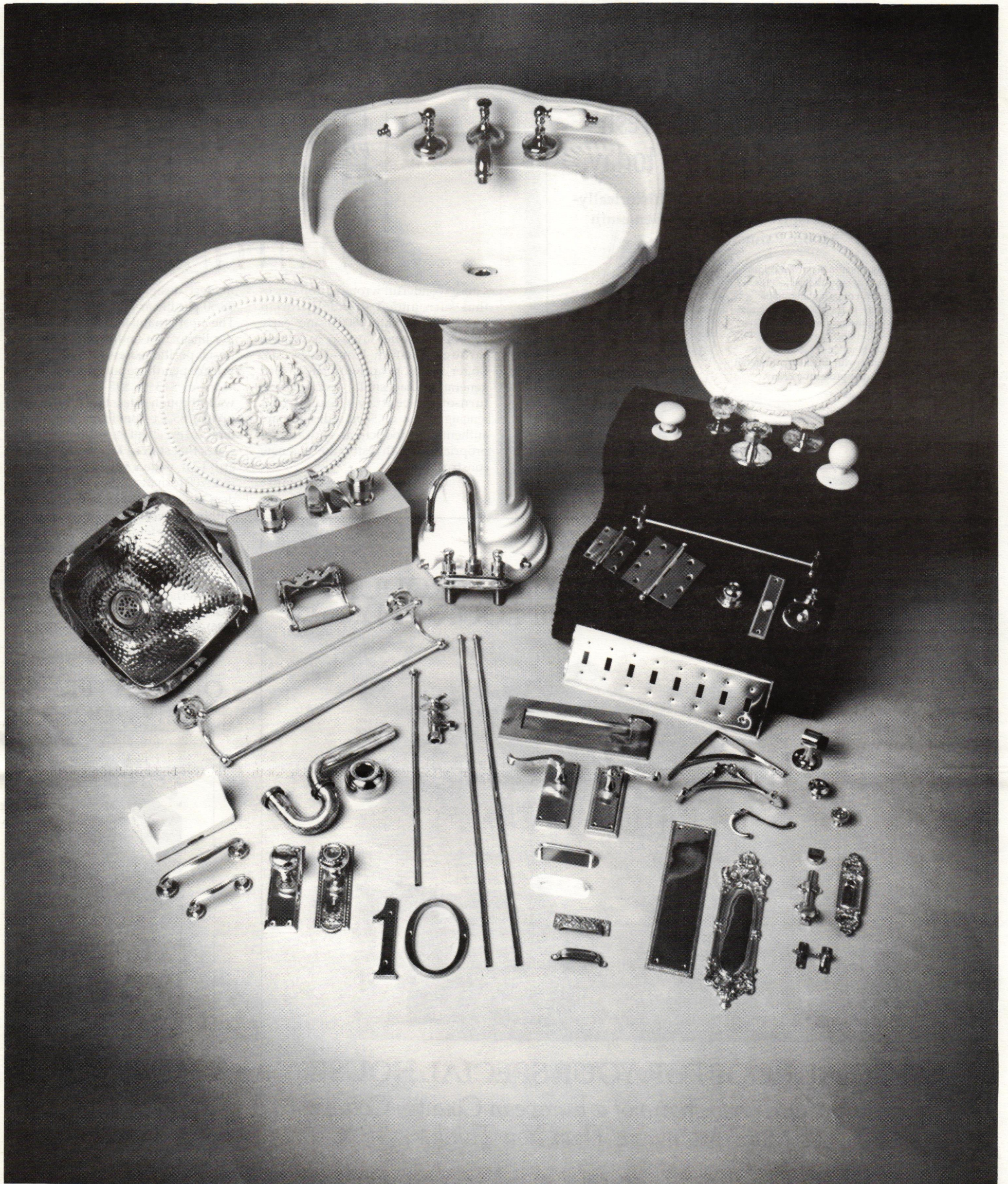
And she's indignant at the widely-held view that preservation firms can't do new work: "I was trained as an architect. Restoration is only one aspect of architecture. I get really steamed when people think that restoration architects can't design!"

And in fact, Beha Associates' new work, such as Dedham Country & Polo Club, has been received with enthusiasm by peers and public. One observer of the firm's work calls its new designs "contextual, traditional, self-assured, and very beautiful."

Beha becomes supercharged when the discussion turns to design. "Art and architecture are taught together in college. We're told that architecture is supposed to be an extension of the fine arts. Then we get out into the real world and discover that art and architecture are never again mentioned in the same breath."

Ann Beha is clearly committed to putting art back into the building arts. And it's equally clear that her familiarity with 18th-, 19th-, and early 20th-century buildings vigorously informs and inspires her work.

Ann Beha Associates' design work puts it in the vanguard of those architects creating new buildings that use America's architectural heritage as a wellspring of inspiration. They don't employ historical forms as a source of parody as do the Post-Modernists, but instead treat historical themes with intelligence and sensitivity. They are creating a new Neo-Traditional style; it's not only architecture, it's art! ♦



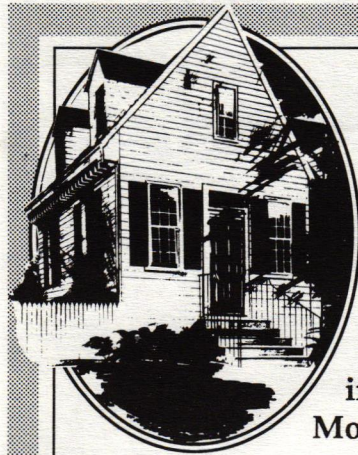
## Everything for the Traditional Building.

Decorative Hardware ~ Plumbing Fixtures & Accessories  
Architectural Trims & Medallions

CATALOG AVAILABLE \$2.00

Restoration Works Inc.  
810 Main Street  
Buffalo, N.Y. 14202  
(716) 856-8000

Circle No. 41



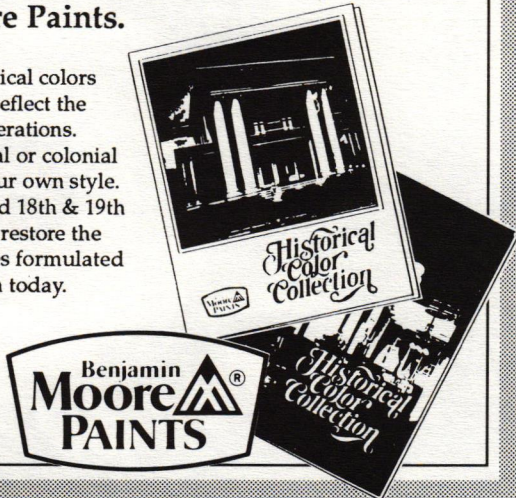
## Authentic American colors look fresh and natural today.

Quality finishes in historically-inspired colors from Benjamin Moore Paints.

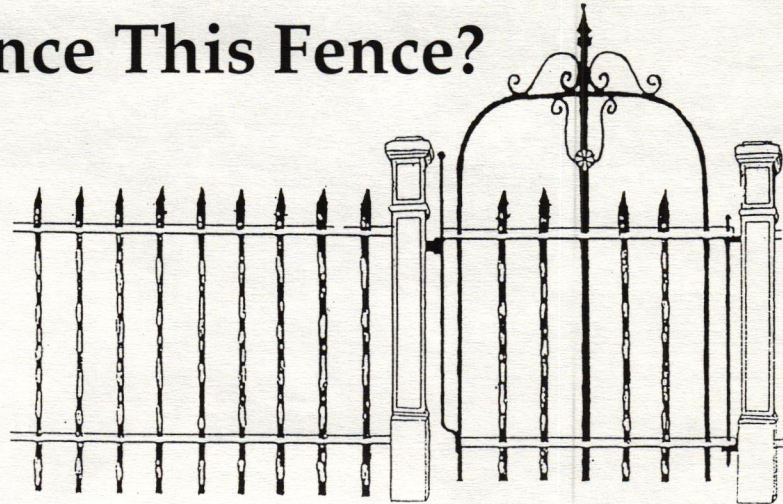
**Inside:** Choose authentic historical colors for walls, trim and accents that reflect the dignity and warmth of past generations. Use them naturally, in traditional or colonial settings, or as inspiration for your own style.

**Outside:** You'll find documented 18th & 19th century color combinations that restore the charm of yesterday, with finishes formulated to provide maximum protection today.

See your Benjamin Moore dealer for courteous service & expert advice, to help you create a personal look that is historically correct.



## Whence This Fence?



Those wonderful wrought iron fences that surrounded grand Victorian homes in the late 1800's and early 1900's are, once again, available through Custom Ironworks, Inc. Roger Scott, proprietor and a 3rd generation blacksmith, specializes in turn-of-the-century wrought-iron fencing. Most of Scott's designs are authentic reproductions and are appropriate for both restoration and new construction.

Custom Ironworks' most

modest design, shown above, costs \$8.50 per linear foot and is 3 ft. high. The most ornamental design costs \$31 per linear foot and is 5 ft. high. Line posts, positioned every 6' 8", vary in price depending upon height and style — from \$13 to \$95 each. Standard walk-through gates start at \$91, and go up to \$185. Custom Ironworks also offers an excellent selection of Estate Gates that start as low as \$540 (standard: 12 ft. wide x 5 ft. high) and go up to \$3200 (ornate: 16 ft. x 7 ft.). Most orders are shipped via common carrier within 4-6 weeks. Custom Ironworks is one of very few ironwork companies remaining that will travel interstate to install fencing.

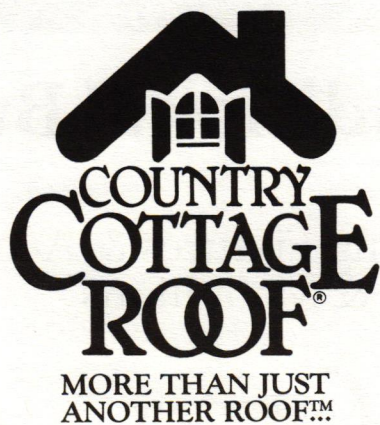
For free catalog, send request on letterhead to: Custom Ironworks, P.O. Box 99, Dept. TB, Union, KY 41091 (606) 384-4486. CSI# 05500 — TM

## IT TAKES A SPECIAL BUILDING PRODUCT TO MAKE A NEW HOUSE LOOK OLD.



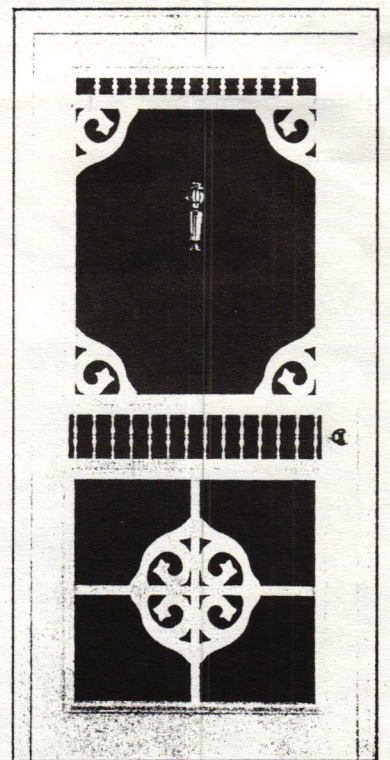
### A SPECIAL ROOF FOR YOUR SPECIAL HOUSE.

*Capture the Aura and Charm of a European Country Cottage. It's More Attainable Than You Think.*



**COUNTRY COTTAGE ROOF®**  
1305 East 39th Street North, Sioux Falls, South Dakota 57104  
Phone: 800-327-8115

## OLD PATTERNS, NEW DOORS



The Old Wagon Factory has long been a great source for reproduction wooden screen doors. And they've just introduced three new designs. Our favorite is model #132, above.

The original door, from which this design is taken, was on a turn-of-the-century post office in Illinois. The spindles, however, are a design element added by the Massingills, proprietors of Old Wagon Factory. The door comes with 2 screen and 2 storm panels, which are easily interchanged with turn-buttons. Standard sizes available are 32" x 81" and 36" x 81" and cost \$340. Custom sizes can be made for \$370 (any size). Old Wagon Factory offers a 10% discount to building professionals.

Send \$2 for catalog to: Old Wagon Factory, P.O. Box 1427, Dept. TB98, Clarksville, VA 23927 (804) 374-5787. CSI# 08210 — TM

# KING OF THE COOKSTOVES



So, you have this client who wants you to design the ultimate kitchen: walk-in freezer, commercial refrigerator, garbage compactor, and the best cookstove money can buy. A cooker that can simmer, bake, roast, toast, boil, braise, steam, stew, simmer, fry, grill, and keep food warm — all at the same time. Not to worry . . . there's a solution.

The AGA Cookstove works on the principle of stored heat. Unlike conventional ovens, the AGA has no knobs or dials. The massive castings that make up the combustion unit, ovens, doors, and hotplates act as accumulators, storing heat at the right temperature. The AGA has 4 ovens: simmering, warming, baking, and roasting. The stove-top has 3 cooking plates: warming, simmering, and boiling. Because the Cookstove is constantly "on," all ovens & plates maintain proper cooking temperature and are ready for use immediately.

Although the AGA is never turned off, its fuel consumption is competitive with ordinary stoves. For example, the largest AGA cookstove has 4 ovens and measures 26-3/4" deep, 58-1/4" wide, and 33-1/2" high and uses about 1500 cu. ft. of natural gas/week, 16 gal. LP gas/week, or 96 lb. of coal/week. The 4-oven model lists for about \$6,900 and is available in 7 colors. There's also a 2-oven model that costs about \$5,600, measures 26-1/2" deep, 38-3/4" wide, and 33-1/2" high and is also available in the same range of colors.

For free literature contact: **AGA Cookers, Cooper & Turner, Inc. RFD 1, Box 477, Dept. TB, Stowe, VT 05672 (802) 253-9727. CSI# 11452 — TM**

## CSI Numbers in TRADITIONAL BUILDING

The editors of *TRADITIONAL BUILDING* have adopted the *MasterFormat* system developed by The Construction Specifications Institute as our means of indexing product information. Thus, you'll find a CSI number at the end of each product review to aid in filling our product stories. The Advertising and Editorial Indexes at the end of each issue also utilize the CSI system. — CL

## VICTORIAN WALLPAPERS

- Handprinted Borders, Friezes, Ceiling Papers & Coordinated Wall Fills.
- Available Directly from our Studio by Mail Order.
- In-house Design Service.
- Color Catalog with Binder: \$8.00

**BRADBURY & BRADBURY  
WALLPAPERS**  
P.O. BOX 155-L • BENICIA, CA. 94510  
(707) 746-1900

Circle No. 13

# LAHAYE BRONZE, INC.

is . . . one of the largest and oldest manufacturers of cast and fabricated metal work in the United States. Our foundry casts bronze, brass, aluminum and nickel. La Haye fabricators work in all metals. These illustrations demonstrate the wide range of our capabilities.

ENTRY PLAQUES

SAW-CUT METAL

IN MEMORIAM

DEDICATION TABLETS

BRONZE DOORS

SEALS & CRESTS

BAS RELIEF PORTRAITS

BUSTS & STATUARY

HISTORIC PROPERTY IDENTIFICATION

HISTORICAL

## ABOUT THE COMPANY

A family-owned corporation, the La Hayes have been producing high quality tablets, letters and custom metal work for over 150 years. Each master craftsman at our facility has no less than 30 years experience in this trade. This tradition affords you the ultimate in superb ornamental metal work. We take sufficient pride in our art to guarantee your satisfaction. Should any product we manufacture not fulfill your expectations of high quality, your money will be refunded upon return of the product.

## PRODUCTS AND SERVICE

We maintain a service staff to respond to your inquiries and assist you in specifying, estimating, design or order placement. The services of our in-house sculptors and draftsmen are also available to you. Our products include: Cast tablets and plaques in bronze or aluminum • Desk plates • Cast dimensional letters • Miniature dimensional letters • Metal etching • Cut-out letters in all metals • Cast bronze or aluminum seals and crests • Doors • Gates and grill work • Bas and alto relief panels • Original sculptured art work • Metal friezes • Metal refinishing.

## FOR MORE INFORMATION

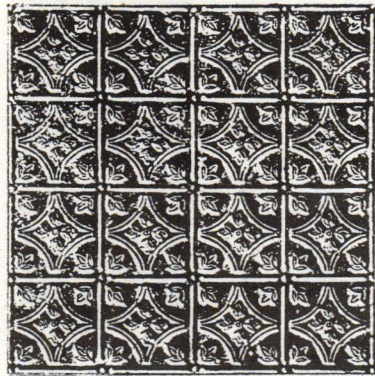
To learn more about the many advantages of La Haye Bronze call toll free 1-800-523-9544, in California phone 714-734-1371 or write to the factory.

LAHAYE BRONZE, INC. • 1346 RAILROAD STREET • CORONA, CA • 91720 • PHONE (714) 734-1371

Circle No. 32

## Embossed Tin Panels Replace Acoustical Ceilings

For decades, traditional tin ceilings have been replaced by suspended acoustical ceilings. Now, with more people seeking the historic look, embossed tin is getting revenge: it's displacing conventional acoustical panels.



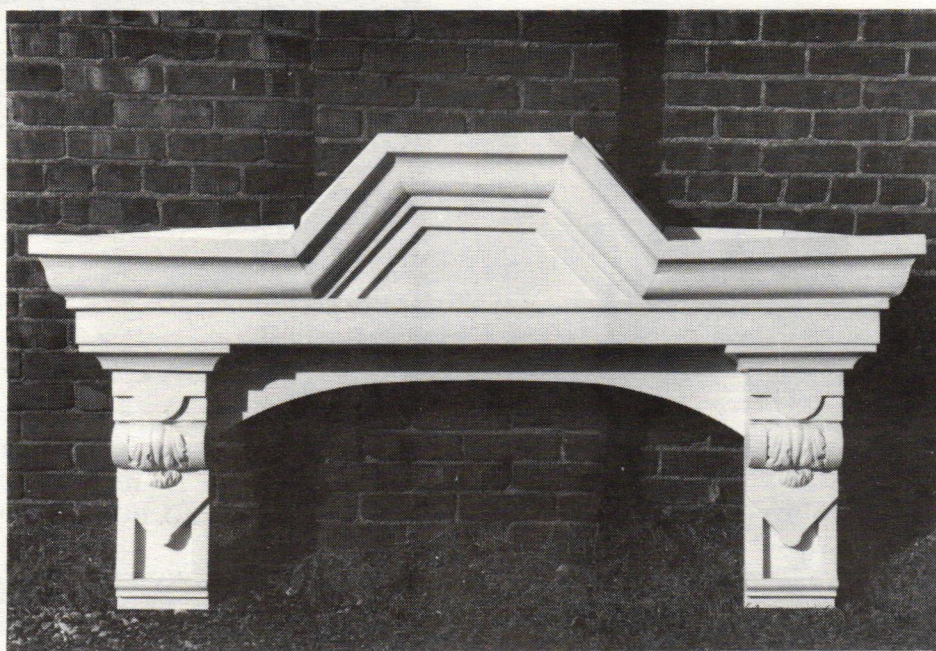
AA Abbingdon has introduced 2-ft. x 4-ft. tin ceiling panels that can be dropped in most 2-ft. x 4-ft. ceiling grid suspension systems. This is especially useful if a project demands ready access to ductwork between ceiling and subflooring above. The suspended tin ceiling panels combine the historic look with easy access of conventional acoustical ceilings.

Once installed, the ceiling can be coated with any oil-based paint. If you want to retain the original silvery color, apply a coat of clear lacquer or polyurethane.

Prices for the panels start at \$17.25 each. Almost all of Abbingdon's regular tin ceiling patterns are available in the new, smaller panels.

For literature, send \$1 to: AA Abbingdon Affiliates, 2149 Utica Avenue, Dept. TB, Brooklyn, NY 11234 (718) 258-8333. CSI# 09515 — TM

## The Return Of Sheet-Metal Ornament



Looking for a low-cost alternative to terra cotta, wood, cast-iron, or copper exterior ornament? W.F. Norman manufactures a wide range of economical sheet metal ornament for exterior and interior use. The patterns Norman offers were first produced in 1892, and the original dies are still used today. Walk down almost any main street in America and look up to the cornices: you'll see sheet metal ornament that has survived since the turn of the century.

Metal ornament is lightweight, making it easy to secure safely. W.F. Norman's metal ornaments are either zinc, which lasts as long as copper, or galvanized metal (zinc coated steel). With regular maintenance and paint-

ing, ornaments made from galvanized steel will last as long as those made from zinc.

W.F. Norman makes everything from drops and pinnacles to panel ornaments and keystones. They will also custom-produce ornament to your specifications. Shown above is a custom-made window hood. When ordered in quantities of 20 or more, this piece costs between \$450-\$500 per hood. If only one were needed to match existing window hoods, the price would be about \$650.

Sheet Metal Ornament catalog free when requested on letterhead. W.F. Norman Corp., P.O. Box 323, Dept. TB, Nevada, MO 64772 (800) 641-4038. CSI# 05730 — TM

## Affordable Bronze Plaques

Erie Landmark Company manufactures bronze markers in custom and stock sizes that are perfect for identifying your projects. With restoration at an all-time high, bronze plaques have emerged as a status symbol of choice. Even new homes with historical styling proudly wear plaques.



Erie Landmark produces high-quality customized plaques and markers at surprisingly affordable prices, in standard sizes and formats. They have approved National Register plaques in cast bronze (2 lines custom text) for \$86 and in cast aluminum (no customizing) for \$35. Erie offers free consultation, trade discounts, and special prices on quantity orders.

Bronze Markers are cast in standard oval or rectangular format, from 5" x 7" to 7" x 10", and range in price from \$55 to \$90 with a choice of finishes: polished, antiqued, or antiqued with polished text. Erie also makes cast aluminum, redwood, and metal photo plaques. Allow 6-8 weeks for delivery.

Send specs for quote on custom markers, or request free literature from: Erie Landmark Co., Suite 211, Dept. TB, 90 W. Montgomery Ave., Rockville, MD 20850 (301) 460-9575. CSI# 10400 — TM

## WHAT BEATS WOOD?



When you want the look of wooden lattice-work without long-term maintenance, consider Vinylattice from Cross Industries. For porches and trellises, especially, it makes a lot more sense than wood.

Cross Vinylattice is a polyvinyl-chloride product that comes in white (and 7 other colors), and in diagonal and rectangular patterns. In the diagonal pattern, strips are placed at 45° angles to the panel edges; in the rectangular pattern, the strips are placed parallel to the panel edges. Panel joints are chemically welded, rather than stapled. The PVC contains an ultraviolet inhibitor which prevents yellowing and fading.

Each pattern comes in 3 variations of strip widths and openings. Panels are 4' and 2' 10" x 8'; diagonal patterns can be almost any length. A 4' x 8' white panel retails for about \$49.

Scale drawings of Vinylattice and free literature are available with your letterhead request. Cross Industries, Inc., 3174 Marjan Drive, Dept. TB, Atlanta, GA 30340 (404) 451-4531. CSI# 10240 — TM

## Custom Wood Doors & Windows With No Shortcuts

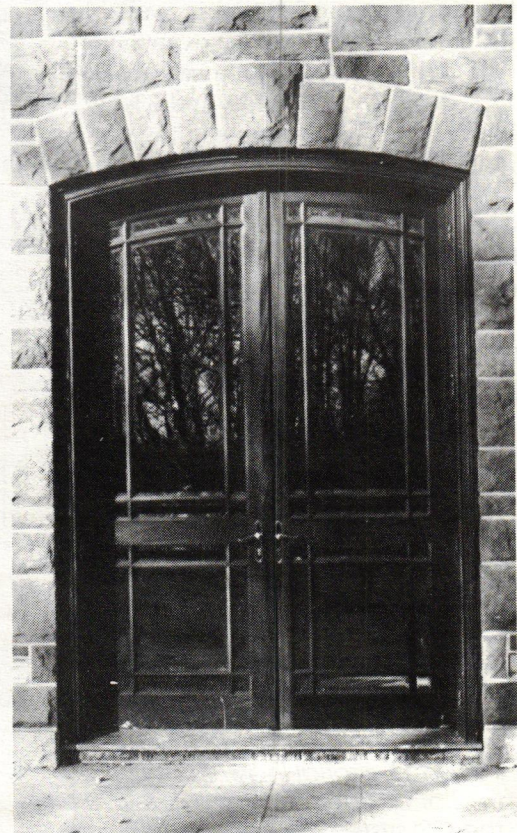
A window is a window is a window. Or is it? Ask Morris Zeluck of J. Zeluck, Inc., and you'll hear otherwise. They have been custom-fabricating windows and doors since 1921. And when they say custom, *they mean custom.*

If your designs call for more than the stock windows or doors offered by Andersen, Marvin, or Pella, then you'll want to speak to Zeluck. All they make are custom doors and windows. If you visit their showroom, you'll see samples of some common styles — but no stock items.

Zeluck will make a round-top window in any radius — single-, double-, or triple-hung, manual or motorized operation, muntins as narrow as 1/8", single, standard and reversible awning, open-in and open-out casements, and other special architectural shapes. All windows are made of mahogany (unless otherwise specified), with brass or stainless hinges. Glazing is carefully embedded and weather-sealed with butyl tape and butyl caulking. Zeluck's custom doors are also made with the same workmanship and attention to detail.

One of their most notable projects is the replacement of over 100 windows on the Arts & Industries Building of the Smithsonian Institution in Washington, D.C. Other projects include: The Helmsley Palace Hotel/Villard Houses, New York City, Doral-Hotel, Fla., Philips Collection Museum, Washington, D.C., and the Bronx Zoo in New York City.

Send specs or drawing for bid. For literature, contact: J. Zeluck, Inc., 5300 Kings Highway, Dept. TB, Brooklyn, NY 11234 (718) 251-8060. CSI #08610 — TM



17th and 18th Century Millwork

Maurer and Shepherd Joiners

Windows, Doors & Entryways  
Raised Panel Walls  
Old Glass, Moldings, Wide Pine Flooring  
Beaded & Feather edge boards

CUSTOM WOODWORKING

Maurer & Shepherd Joiners  
122 Naubuc Avenue  
Glastonbury, Connecticut 06033  
(203) 633-2383

Circle No. 36

Maine's Only Producer of Traditional "Quartersawn" Pine Clapboards

DONNELL'S CLAPBOARD MILL

With special 19th century machinery we have revived an almost forgotten sawing process. We produce the authentic air-dried radially sawn clapboards for the exacting customer or the discriminating builder. For informative brochure please send \$1.

Donnell's Clapboard Mill  
County Road, R.R. Box 1560  
Sedgwick, Maine 04676  
(207)-359-2036

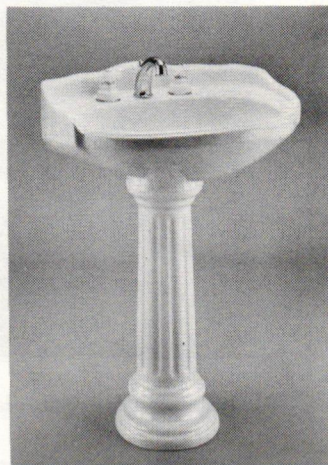
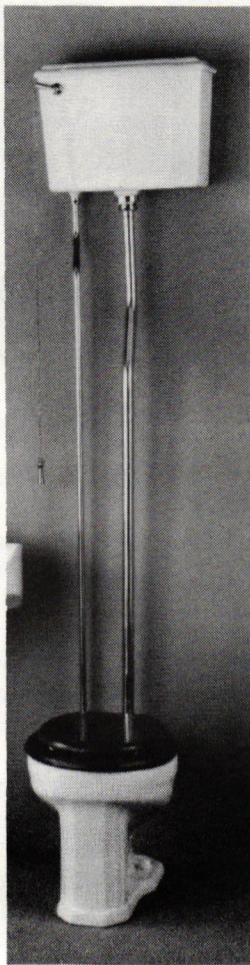
Circle No. 26

# Quality Bathroom Products and Plumbing Accessories

that reflect a classic & nostalgic mood... from *bathlines*

## Barclay II High Tank Toilet

Full exterior glazing. Tank with Cover. Toilet available with either brass or chrome trim.



## Barclay's Victoria Pedestal Lavatory

- Non-Splash Rim
  - Concealed Overflow in Front of Bowl
  - Scalloped Edge Trim
  - Highly Detailed Soap Dish Area
  - Detailed Pedestal Column
- Victoria pedestal shown with Argenti faucet.

## Argenti Faucets by Barclay

Washerless ceramic disc cartridge. Faucets are epoxy coated over solid brass in combinations of white, brass, chrome and black nickel.



## Barclay Bathtub

with polished brass claw feet, acrylic reinforced with fiberglass. Shown with brass Converto shower and white porcelain shower head.



## Polished Brass Bar Sink and Faucet

Also available in other finishes.

## Barclay's Victoria Toilet

with detailed fluted toilet bowl. The tank repeats classic lines of bowl. Available with brass or chrome handle.



2154 N. Halsted • Chicago, IL 60614 • (312) 472-0777

California Arts & Crafts Tiles ■ Art Deco Tiles  
 Custom Ceramic Tiles & Murals  
 Historic Reproductions ■ Traditional Patterns  
 Coordinated borders ■ Quadrats ■ Corner blocks

Victorian Transfer Tiles in the Anglo-Japanese Style ■ Persian Revival Tiles ■ Art Nouveau Tiles  
 Victorian Foliage Tiles ■ William DeMorgan Style Tiles ■ Period Pavements ■ Spring Garden Tiles



Designs In Tile™

415/571-7122

Dept. T ■ Box 4983 ■ Foster City ■ CA ■ 94404  
 © 1987 Designs In Tile ■ Illustrated Brochure \$3

Country Tiles ■ Custom Murals ■ Folk Tiles

Circle No. 25

**MAD RIVER WOODWORKS**  
 ARCHITECTURAL MILLWORK

- MOLDINGS
- PICKETS
- SCREEN DOORS
- PORCH PARTS

CATALOG \$2.50  
 P.O. Box 163 Dept. TB, Arcata, CA 95521

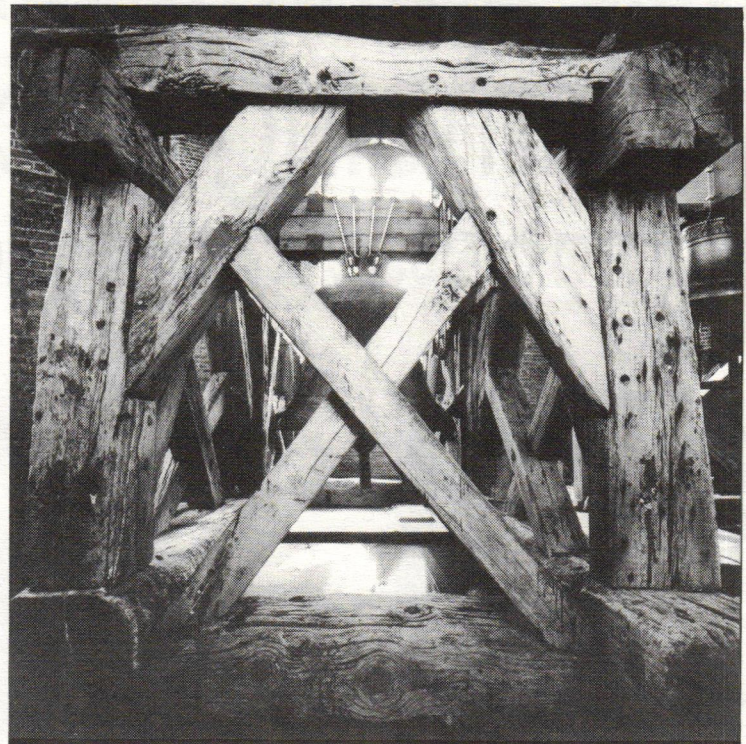
# STRENGTHEN ROTTED TIMBERS

Discovering rotted timbers in an old building is a nightmare. Replacing them usually involves a lot of demolition, which often damages adjacent plaster and other finished surfaces.

Now there's an epoxy-based system that allows you to restore and strengthen rotted beams in place. The Beta system uses an epoxy mortar along with specially treated polyfiber reinforcement rods.

Most epoxy-based systems for repairing rotted wood (such as the West system) can only be used on non-load-bearing members. But the Beta system, because of its fiber reinforcing rods, can be used on structural timbers.

The Beta system was developed in Holland and has been used on many restoration projects in both Europe and the United States. For example, in Amsterdam's Maritime Museum, 582 beam ends and 276 wooden trusses were restored and strengthened with the Beta System. In the U.S., the Beta system was used to restore the Nan-



Timbers in this Colonial windmill were restored with the Beta System.

**TIN CEILINGS**

- 19 patterns - 2 ft. x 8 ft. size
- Several patterns now available in 2 ft. x 4 ft. size
- 10 cornice moulding styles
- Fast and easy installation
- Shipped anywhere
- Brochure available!

Send \$1 for postage & handling

**A A ABBINGDON AFFILIATES, INC.**  
 Dept. TB 2149 Utica Ave  
 Brooklyn, NY 11234  
 (718) 258-8333

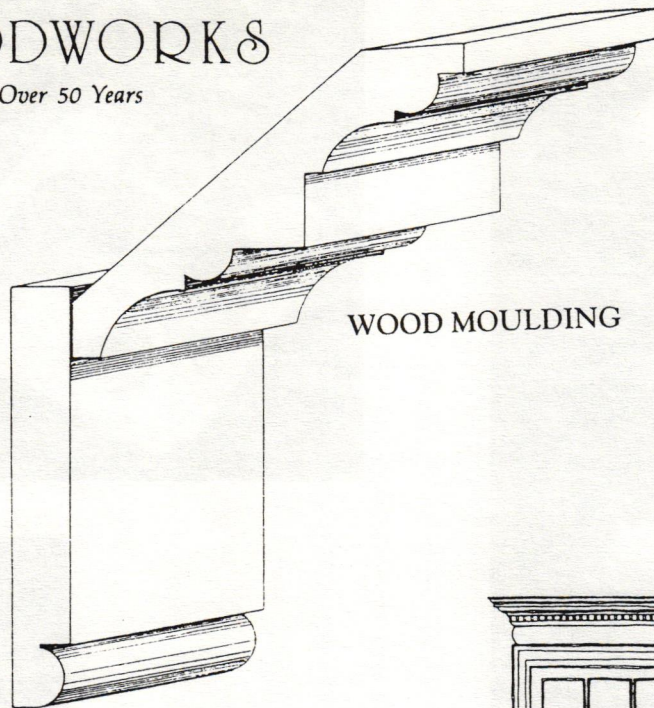
tucket Windmill, Nantucket, RI, Saugus Iron Works, Lowell, MA, and the Bee Bee Windmill in Southampton, NY.

While repairs with the Beta system aren't cheap, they can be less expensive than tearing apart a building to insert new timbers. But most importantly, Beta system repairs avoid removing original elements from historic buildings.

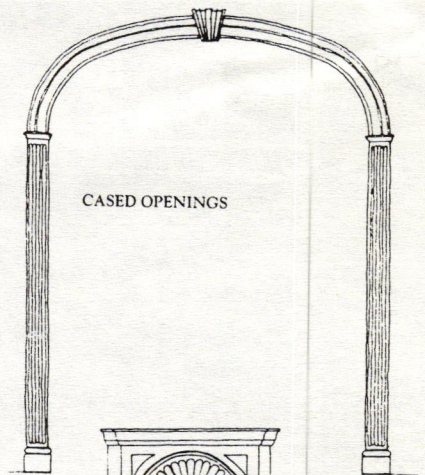
For more information, contact Beta's North American distributor: **Dell Corporation, P.O. Box 1462, Dept. TB, Rockville, MD 20851 (301) 279-2612. CSI# 06300 —TM**

## COLONIAL WOODWORKS

Distinctive Craftsmanship for Over 50 Years

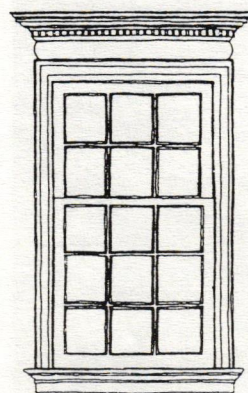


WOOD MOULDING



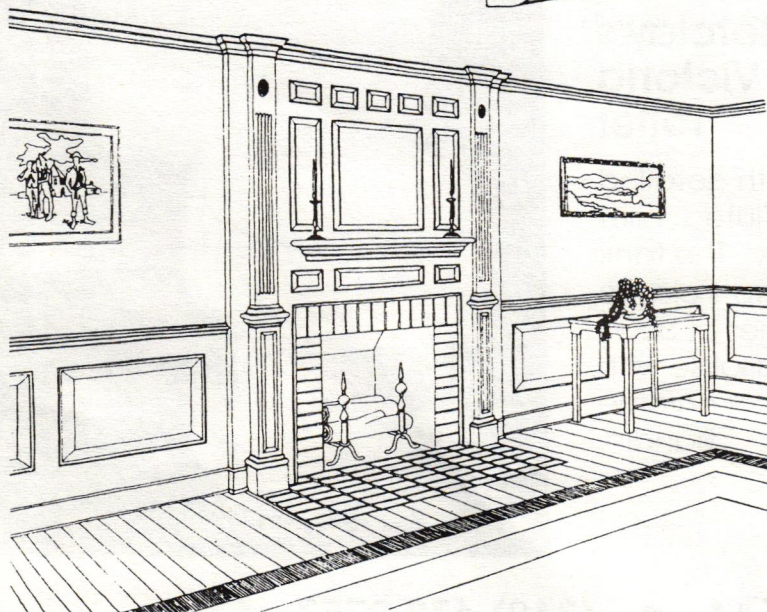
CASED OPENINGS

MANTELS



COLONIAL INSULATED WINDOWS

CORNER CUPBOARDS



WAINSCOTE PANELING

FULL WALL PANELING

Send \$5.00 for 60 page catalog to:  
**COLONIAL WOODWORKS**

Department TB

Post Office Box 10612  
 Raleigh, North Carolina 27605  
 (919) 833-1681



# Beveled Glass In Many Guises



Beveled Glass Industries produces doors, skylights, windows, and fan lights with beveled glass panels, in over 100 stock styles, or custom-made to your specifications.

Each pane of glass is ground and polished by hand in the traditional method developed in the late 19th century. Hand-beveled glass has more sparkle and prismatic effects than glass beveled by machine. It is the irregularities created by hand-grinding that make the difference.

Shown here is the Fleur-de-Lis pattern, used both in door and side lights. Doors, glass, and sidelights (unfinished, no hardware) carry a list price around \$2930. All styles of glass panels can be purchased alone, or pre-

installed in any of their 5 door styles. Surprisingly, custom work is not that much more expensive than stock items. Cost varies with size and style. Submit specs with a scale drawing for a price quote on original designs.

Beveled Glass Industries sells exclusively to the trade, and offers a courtesy discount. Standard patterns and sizes are shipped out immediately and should arrive within 4 weeks. Custom work takes anywhere from 60 to 90 days. All orders are shipped freight collect.

For a quote, or literature, contact: **Barbara Goodman, Beveled Glass Industries, 979 Third Ave., Suite 825, Dept. TB, New York, NY 10022 (212) 753-1380. CSI# 12170 — TM**



## VINTAGE LUMBER CO.

### CUSTOM FLOORING

Remilled Antique Heart Pine, Oak, Chestnut & White Pine. New Oak, White Pine, Cherry, Walnut & Maple.

T&G • Kiln Dried • Random Width Antique Beams • Period Mouldings

**FREE BROCHURE**  
**301-898-7859**

*By Appointment Only*

9507 Woodsboro Rd., Frederick, MD 21701

Circle No. 50

## BENCH MANUFACTURING Co.



### MFG. SALES/REPS WANTED

**FOR THE PAST 25 YEARS, THE PEOPLE OF BENCH CO. HAVE BEEN MANUFACTURING QUALITY SITE AMENITIES**

**SUCH AS BENCHES, TRASH RECEPTACLES, CLOCKS & LIGHT POLES.**



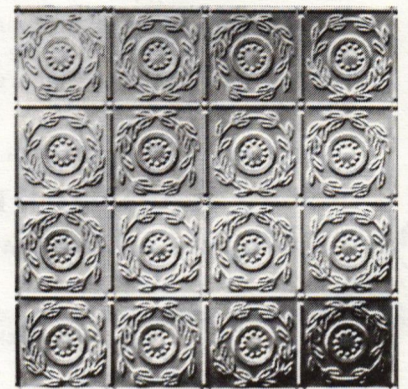
**Call or write for catalog & details.**

**BENCH MFG. CO.**

P.O. Box 158  
Concord, Mass. 01742  
Tel. 617-371-3080  
FAX 617-369-9470

Circle No. 10

## CHELSEA Has A Product You Can Look Up To



### NEW VICTORIAN DESIGNS

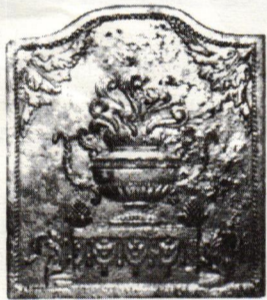
**CHELSEA DECORATIVE METAL CO.**

**6115 Cheena, Dept. HT  
Houston, Texas 77096**

**(713) 721-9200**

CATALOGS \$1.00

Circle No. 19



Pineapple and Urn  
24"W x 28"H, 85 lbs.

## A FIREBACK Makes a fireplace

- MORE EFFICIENT
- SAFER
- MORE BEAUTIFUL

These handsome cast-iron plates prevent damage to the back wall of a fireplace - mask and protect an already damaged wall. They also radiate extra heat into the room.



The Rooster  
28"W x 26"H, 65 lbs.

### THE LARGEST COLLECTION OF ANTIQUE REPLICA FIREBACKS IN AMERICA

We handcraft sand molds made directly from original antique firebacks. This insures authenticity and exceptionally fine design detail.



The 1768 Wedding  
16"W x 23"H, 45 lbs.



Thomas Potts  
24"W x 24"H, 67 lbs.



Adam & Eve  
20"W x 24"H, 62 lbs.



The Stag  
20"W x 25" H, 65 lbs.



Jupiter  
12"W x 21"H, 22 lbs.



The Order of the Garter  
27 1/2" W x 26 1/2" H, 120 lbs.

For **FULLY ILLUSTRATED CATALOG** of 35 Firebacks call 215-296-7122  
or write to **The Country Iron Foundry, Dept. 950 Box 600, Paoli, PA, 19301**

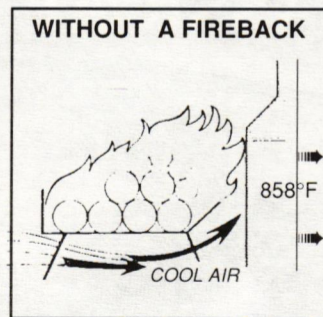
Safety Support System PATENT #4468548.  
Do-it-yourself installation in two minutes - no drills, no bolts, no holes.



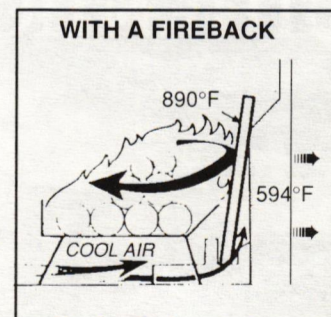
Circle No. 21

### INDEPENDENT LABORATORY TEST RESULTS

(Conducted by Arnold Green Testing Labs, July, 1986)



The back wall reaches **858°F**. Most of that heat is transmitted through the back wall - causing erosion to the mortar and masonry.



The back wall reaches only **594°F** - almost **one third cooler**, while the fireback reaches 890°F and reflects heat into the room.

A standard masonry fireplace burning standard wood logs for 8 consecutive hours

We offer Firebacks for: Pre-Fabricated (Zero Clearance) Fireplaces and Gas Log Fireplaces



**NOW AVAILABLE!**

## Decorative Metal Ceilings

Original turn-of-the-century patterns

Using eighty year old dies, the W. F. Norman Corporation is once again producing metal plates for the design of ceilings and wall coverings. Their growing popularity stems not only from nostalgia but from their beauty, permanence, fireproofing and economy.

The fullness of the Hi-Art™ line — including center plates, corner plates, border plates, cornice and filler plates — permits classic designs to be produced that are architecturally proportioned for an exact fit.

Write for reproduction copy of 72 page illustrated catalog. Price \$3.

**W.F. Norman Corporation**  
P.O. Box 323 • Nevada, Missouri 64772 • 800-641-4038

Circle No. 52

### VICTORIAN AND TURN OF THE CENTURY

Chandeliers, Sconces & Fixtures



Design • Contract • Manufacturer • Restoration  
• Replacement Parts & Glass Shades

**THE MOST COMPLETE SOURCE FOR ANTIQUE AND REPRODUCTION GAS, OIL AND ELECTRIC LIGHTING**

**Lighting Catalog \$4.00**

THE FINEST LAMP & FIXTURE RESTORATION AVAILABLE

### ANTIQUe BRASS SHOWERS & FIXTURES



• Claw Tubs • Brass & Chrome Showers • Shower Rings • Pedestal Sinks • Faucets • Oak High Tank Toilets • Cage Showers • Cross Handles • Porcelain • Hard-to-Find Parts • A Huge Selection of Accessories • Expert Advice

**Plumbing Catalog \$5.00**

**ROY ELECTRIC CO., INC. (718) 434-7002**  
SHOWROOM: 1054 Coney Island Ave., Brooklyn, NY 11230

Circle No. 43

# AUTHENTIC, CLASSICAL ELEGANCE.



## ON A ROLL

**The Original Embossed, Paintable Wallcoverings!**

Lincrusta® and Anaglypta® are easily applied and reasonably priced. Dating back 100 years, they have excellent hiding ability and are the perfect renovation product. There are many wall, ceiling and border patterns from which to choose.

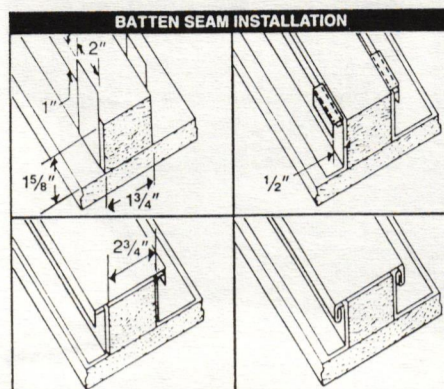
**For Local Sources Call:**

<b>Classic Ceilings</b> 902 E. Commonwealth Fullerton, CA 92631 800-992-8700	<b>Bentley Brothers</b> 918 Baxter Avenue Louisville, KY 40204 800-824-4777 (In KY-502-589-2939)
---	--

Circle No. 12

## Metal Roof Renaissance

*Q: What do the Smithsonian Institution, Monticello, Andrew Jackson's Hermitage, and Washington's Union Station have in common? A: Terne metal roofs. One of the oldest types of roofing materials, terne is enjoying a big comeback for both restoration and new construction.*



Usually applied with standing or batten seams, terne roofs add visual richness and a traditional look to any building. (Terne metal is copper-bearing steel, coated on both sides with terne alloy — 20% tin and 80% lead.)

Terne's major disadvantage is that it needs to be kept painted, which adds to maintenance costs. But the need for painting can also be turned to advantage: the designer can specify any color, thus making the roof a full design element.

If low maintenance is a prerequisite, there's also terne-coated stainless (TCS). TCS is type 304 stainless, coated both sides with terne alloy. It's a corrosion-free material that stands up even in industrial and marine environments, and TCS doesn't need to be painted.

Terne runs about \$.75/sq. ft. for the material (before installation). TCS is about double that price.

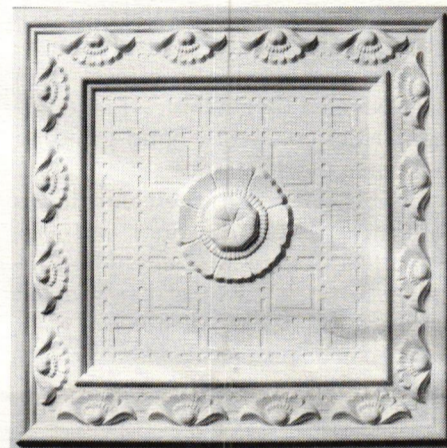
For technical details and installation specifications, contact: **Dewey Vanich, Dept. TB, Follansbee Steel, Follansbee, WV 26037 800-624-6906. CSI# 07610 — CL**

## Tile System Lowers Cost Of Plaster Ceiling

If you're designing a project that demands the elegance of an ornate plaster ceiling, but your budget prohibits the time and expense involved, then Above View's plaster ceiling tiles may be the answer. They provide the look of a coffered plaster ceiling at a fraction of the cost.

Manufactured using gypsum cement, glass fibers, and other non-flammable aggregates, these tiles will not sustain combustion nor release toxic gases in a fire.

Above View tiles are 2 ft. square and weigh about 8 lb. The relief varies from 1/4" to 1-1/4", depending upon the specific design. The tiles will fit into any standard commercial suspended-grid system and can easily be sawed to create cutouts, or to fit into oddly shaped spaces. Tiles come in approximately 1,300 colors, including the full Pratt & Lambert Pro-Hide Plus line. And, if none of those suit your needs, Above View will custom paint or finish your tiles. They offer a choice of three faux finishes: marble, wood, and stone.



While Above View would not quote exact prices, they claim that installing their suspended plaster ceiling tiles costs about 1/6 as much as a coffered plaster ceiling.

Request free literature on letterhead. **Above View, Inc., 241 East Erie St., Dept. TB, Milwaukee, WI 53202 (414) 271-4477. CSI# 09540 — TM**



## STOP BIRDS From Dehabilitating Your Cherished Home.

Nixalite stainless steel needle strips are an impenetrable barrier to birds, and practically invisible too. They give you an effective, humane way of ending bird nuisances and maintenance costs. Send for your free information packet today.



**NIXALITE of AMERICA**  
1025 - 16th AVE. • BOX 727  
EAST MOLINE, IL 61244 • 309-755-8771  
800-624-1189 • FAX 309-755-0077  
SPECIALISTS IN BIRD CONTROL

Circle No. 37

# Two-Dimensional Ornament Is Picture-Perfect



Graphiclad is a new process by which graphic images are photo-transferred to aluminum panels. This process allows you to custom design exciting graphic ornament using traditional or contemporary patterns. The product can be applied to exterior or interior surfaces.

The images on Graphiclad panels can be made to appear flat or 3 dimensional. Ornamental patterns are produced from your original designs, exclusively for your use. Your pattern is scanned by a computer, digitized, and replicated. The pattern is then photo-transferred to aluminum panels. A wide range of colors are available. And while only two colors may be used per panel, the halftone process can create the illusion of a multicolor design.


Graphiclad panels can be affixed to any standard curtain-wall framing system and require no upkeep other than normal cleaning. Total panel thickness is 1/16". Estimated price for the 5-ft. x 5-ft. custom panel shown at left — excluding revisions — is \$2600.

To receive Graphiclad product literature, contact: **Cupples Products, Division of H.H. Robertson Co., 2650 South Hanley Road, Dept. TB, St. Louis, MO 63144 (314) 781-6729. CSI# 12100 — TM**



**AUTHENTIC DESIGNS**  
 The Mill Road  
 West Rupert, Vermont 05776-0011  
 Tel (802) 394-7713

Circle No. 6



**Victorian Lighting Works**

Send \$3.00 for a complete brochure.

**VICTORIAN LIGHTING WORKS**  
 251 S. Pennsylvania Ave.  
 PO Box 469  
 Centre Hall, PA 16828  
 814-364-9577

*Classic Elegance*

**THE CENTRAL PARK POST**

In 1910, Henry Bacon, designer of the Lincoln Memorial in Washington, DC., was selected by The City of New York to design a lamp post to carry the first outdoor electric lighting in Central Park.

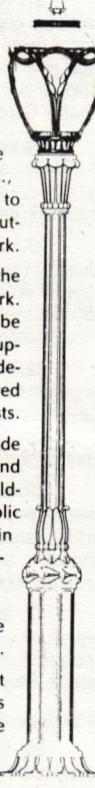
Bacon designed a post to blend with the plants and bushes growing in the park. Garlands of leaves, buds and stems can be seen on the post and a suggestion of upward growth thrust is apparent in the design of the central stem. It is considered to be the most beautiful of classic posts.

Advanced Materials, Inc. has made molds from Bacon's original design and now makes available to architects, builders, developers and to the general public an exact replication of this lovely post in cast iron. The Central Park Post is eminently suitable for use in office and mall surroundings and lends dignity and status to the approaches to private homes, condominiums and estates.

The two-piece design makes the post easy to erect and substantially reduces replacement cost should either part be damaged. Post heights range from nine feet to twelve feet, six inches.

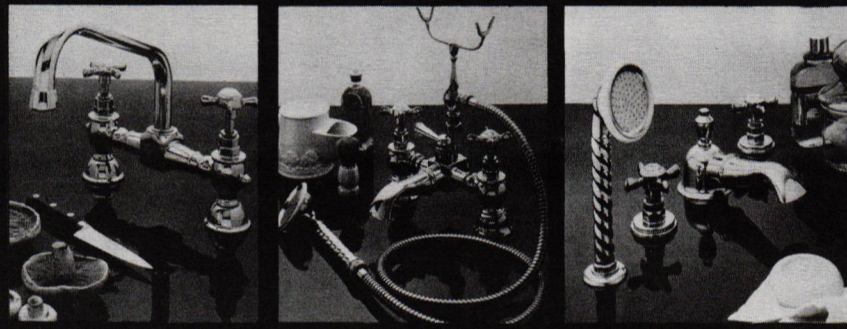
AMI WELCOMES YOUR INQUIRIES.

**AM ADVANCED MATERIALS, INC.**  
 454-2 Main St., PO Box 917, Deep River, CT 06417  
 (203) 526-9755 ■ (203) 526-5131 ■ Telex: 62648040



Circle No. 7

**WATERCOLORS**



AVAILABLE THROUGH YOUR ARCHITECT OR DECORATOR

GARRISON ON HUDSON  
 NEW YORK 10524  
 914 424 3327

Circle No. 53

*Landmarks*



Erie Landmark Co. offers custom markers for indoor-outdoor use.

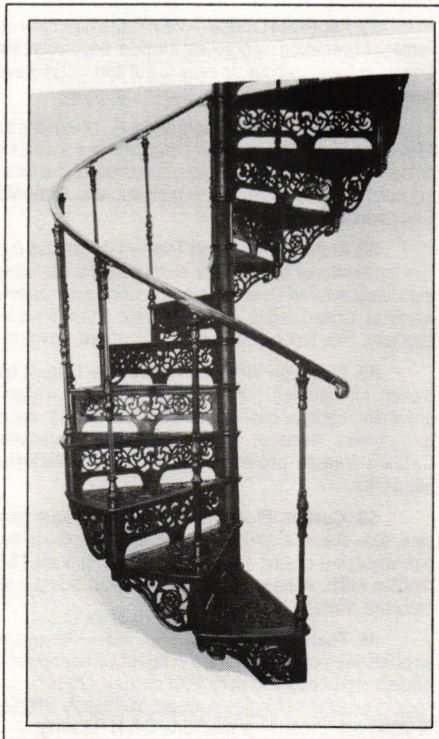
Standard plaques  
 7" x 10" ..... \$90.00  
(plus \$2.25 for shipping and handling)  
 (plus NYS sales tax where applicable)

- **Bronze** - raised oval letters with polished or antiqued finish.
- **Redwood** - with raised 12 K gold leaf letters and borders on a textured background of natural or black stain.

Or send for FREE BROCHURE:

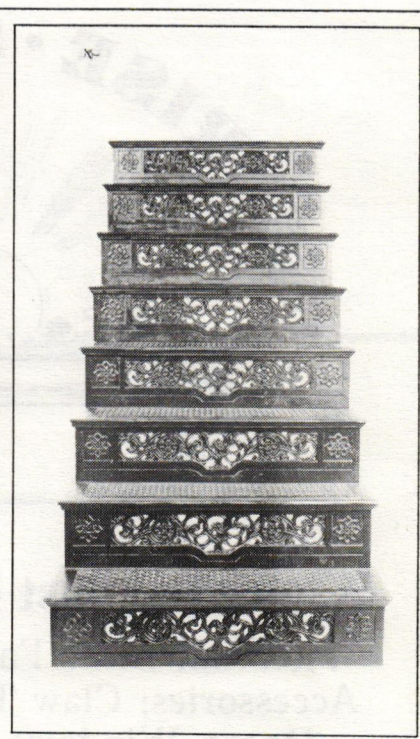
**Erie Landmark Company**  
 Suite 211  
 90 West Montgomery Ave.  
 Rockville, Maryland 20850  
**Tel: (301) 460-9575**  
 call toll free  
**1-800-874-7848**  
 Other styles and dimensions available upon request.  
 Satisfaction guaranteed.  
 Please allow 6 to 8 weeks for delivery.

Circle No. 27



**Steptoe Manufactures & Distributes Quality Restoration Products**

- Cast iron spiral staircases
- Cast iron straight staircases
- W.F. Norman steel ceilings (Canada only)
- Anaglypta & Lincrusta embossed wallcoverings (Canada only)
- Shower convertos for old tubs (Canada only)
- Brass & steel railing systems
- Lawler cast iron railing and architectural detail (Canada only)
- Custom casting
- Solid teak garden furniture
- Plaster cornice and medallions
- Wood cornice moulding
- Exterior lighting



**THE BARCLAY**

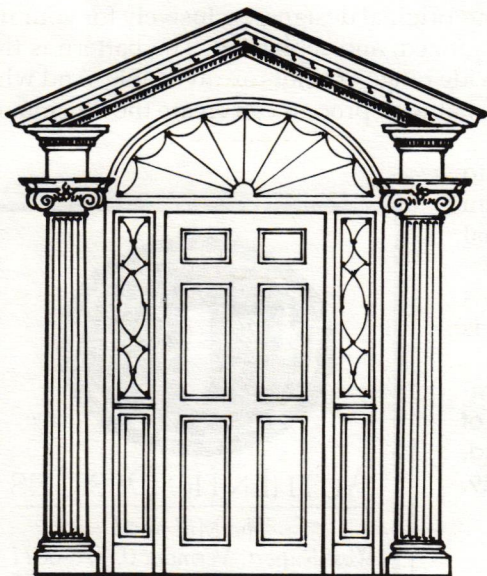
**STEPTOE & WIFE** ANTIQUES LTD.

322 Geary Avenue  
 TORONTO, ONTARIO M6H 2C7  
 (416) 530-4200 FAX (416) 530-4666

**THE KENSINGTON**

Circle No. 47

## THE 15 MOST BEAUTIFUL DOORWAYS IN AMERICA.



Or anywhere! Our hand-carved doorways are the most beautiful available. In traditional Georgian and Federal styles from under \$2000 to \$8500. Carved overdoor motifs from \$350. Color brochure \$3.



One Thompson Square, P.O. Box 34  
Boston, Massachusetts 02129  
(617) 242-1711

## SMITH-CORNELL, INC.

*Plaques of Distinction*

THIS PROPERTY HAS BEEN  
PLACED ON THE  
NATIONAL REGISTER  
OF HISTORIC PLACES  
BY THE UNITED STATES  
DEPARTMENT OF THE INTERIOR

P.O. Box 686 TB PH: 219-925-1172 (IN)  
Auburn, IN 46706 800-325-0248

Circle No. 46

**SUNRISE • SPECIALTY**



**Where the past is alive & thriving!**

Victorian Brass Faucets, Showers and  
Accessories; Claw Tubs, Pedestal Sinks,  
Doors, Windows, Marble, Lights,  
Vanities and More!

Send for **FREE** information.

2301 FOURTH STREET BERKELEY, CA 94710  
(415) 548-0635

Circle No. 48

## FREE PRODUCT LITERATURE

The suppliers listed below will send free literature about historical products to TRADITIONAL BUILDING's professional readers. Just circle the appropriate number on the enclosed postpaid card — or use the form on pg. 21.

### ◆ Division 02 — SITEWORK

**7. Cast Iron Lamp Post** — Replica of the 1910 Henry Bacon design for Central Park's first electric lamp post. Garlands of leaves, buds, and stems suggest upward growth and thrust. Cast in 2 pieces; available in heights from 9 ft. to 12-1/2 ft. Free brochure. **Advanced Materials**

**10. Benches & Site Amenities** — Cast iron benches with your custom lettering, trash receptacles, street clocks, and light poles in traditional styles add a grace note to any site. Catalog free to professionals. **Bench Mfg. Co.**

### ◆ Division 04 — MASONRY

**68. Masonry Cleaning Chemicals** — 24-pg. catalog shows a wide range of masonry paint strippers, cleaners, waterproofer, mold & mildew removers, wood preservers, and equipment that can be ordered direct from manufacturer for significant savings. Catalog free to professionals. **American Building Restoration**

**3. Chimney Lining System** — Pumped-in chimney lining makes old chimneys safe to use once again. Because lining is pumped in as a slurry, it conforms to any chimney configuration, and is economical to install. Free brochure. **Solid Flue**

### ◆ Division 05 — METALS

**17. Weathervanes & Cupolas** — Historic ornament precisely detailed in aluminum: cupolas, weathervanes, load-bearing ornamental columns, domes, and balustrades. Used in many restorations; baked-on finishes available. **Campbellsville Industries**

**21. Cast Iron Firebacks** — Firebacks are hand-cast from original designs dating back to Colonial period. Prices range from \$75 to \$400, depending on size. Also: cast iron footscrapers, garden furniture, andirons in Colonial and Victorian designs. Catalog free to professionals. **Country Iron Foundry**

**24. Iron Fencing & Gates** — Iron fencing and gates in Victorian and many other decorative styles. Installation service available. Catalog free to professionals. **Custom Ironwork, Inc.**

**27. Historic Markers** — Standard-format bronze or aluminum markers can be customized with your own message for economy. Solid bronze 7-in. x 10-in. plaques are \$90 plus shipping. Other dimensions and styles available. Free brochure. **Erie Landmark Co.**

**32. Plaques & Castings** — Foundry is one of the largest manufacturers of cast and fabricated metal work. Castings available in bronze, brass, aluminum, and nickel. Output ranges from small markers to large doors and grills. Free catalog. **La Haye Bronze**

**46. Historic Markers** — Historic markers in sand-cast bronze or aluminum. Also: GraphicsPlus markers made of anodized aluminum with image permanently embedded in bronze or pewter finish. No extra charge for photos or logos. Free brochure. **Smith-Cornell**

**47. Victorian Cast-Iron Stairs** — Handsome reproduction cast iron spiral and straight stairs, shipped knocked down for on-site assembly. Catalog free to professionals. **Step toe & Wife**

### ◆ Division 06 — WOOD & PLASTICS

**54. Epoxy Restoration Materials** — High-tech epoxy coating and repair products for wood, plastics, cast iron and other metals. Amseal/Amwood/Amfill for wood repairs. Epoxy casting materials. Ruscon rust remover. Free brochure. **Advanced Materials**

**18. Wood Columns** — Authentic replication of Greek and Roman orders in redwood, pine, and other woods in diameters from 6 in. to 36 in. and heights from 18 in. to 40 ft. True entasis. Brochure free to professionals. **Chadsworth, Inc.**

**23. Rot-Proof Lattice** — Vinyl lattice has many advantages over wood for porches, trellises, decoration, etc. Comes in large sections, is easy to cut and install, never needs painting. Free brochure. **Cross Industries**

**26. Quartersawn Clapboards** — Using original 19th-century machinery, mill is one of the few sources of authentic air-dried radially sawn clapboards for the exacting customer. Brochure free to professionals. **Donnell's Clapboard Mill**

**36. Architectural Wood Trim** — Handcrafted custom-made interior and exterior 18th century architectural trim: finely detailed Colonial doors and windows, shutters, wainscot, carved details, pediments, etc. Custom work a specialty. Free brochure. **Maurer & Shepherd, Joyners**

**45. Precision Victorian Millwork** — Largest collection of Victorian moldings and millwork available anywhere: casings, bases, crowns, corner blocks, doors, gingerbread, wainscot. Buy direct from manufacturer. Catalog free to professionals. **Silverton Victorian Millworks**

**50. Custom Flooring** — Remilled antique heart pine, oak, chestnut, and white pine. Flooring also in new oak, white pine, cherry, walnut, and maple. Kiln-dried, T&G, random width. Antique beams and period molding. Free brochure. **Vintage Lumber Co.**

**16. Thatch-Effect Wood Shingles** — Steam-bent wood shingles can re-create the thatch effect so popular on English-style houses in early 20th century. Other custom cedar shakes and shingles available. Will supply shingles, or install entire roof. Free brochure. **C & H Roofing**

**33. Snow Guards** — Cast bronze snow guards in several designs add architectural interest to a roof — and prevent damage caused by sliding snow and ice packs. Free brochure. **M.J. Mullane Co.**

### ◆ Division 08 — DOORS & WINDOWS

**55. Reproduction Hardware** — Authentic

reproductions in brass, aluminum, iron, and porcelain. Also available: custom hardware duplication and cleaning and restoration of brass. Complete line of hand-painted aluminum fire marks. Catalog free to professionals. **18th Century Hardware Co.**

**56. Colonial Hardware** — Reproduction colonial forged iron hardware, including H, H-L, strap and butterfly hinges. Catalog free to professionals. **Acorn Manufacturing Co.**

**57. Traditional Brass Hardware** — Solid brass reproduction Renaissance and Victorian hardware; will also custom-make hardware. Catalog free to professionals. **Anglo-American Brass Co.**

**58. Reproduction Hardware** — Reproduction Victorian hardware for doors, windows, and cabinets. Also, a large selection of bathroom fixtures and fittings. Catalog free to professionals. **Antique Hardware Store**

**59. Door Hardware** — Free brochure illustrates a selection of the company's wide range of traditional brass door hardware. **Baldwin Hardware**

**8. 18th & 19th Century Hardware** — Largest selection in U.S. of authentic reproduction Colonial and Victorian hardware, plus lighting fixtures. This hardware has been used in the finest restorations. Restoring or copying your original hardware a specialty. Mini-catalog free. **Ball And Ball**

**15. Custom Bronze Hardware** — High-quality hardware custom-cast from your originals in bronze, brass-bronze, or other metals. Also: standard line of door knobs, escutcheons, hinges, levers, and other unusual items. Catalog free to professionals. **Brian F. Leo Custom Hardware**

**60. Door & Window Hardware** — Wide selection of reproduction door and window hardware from many manufacturers; suitable for restorations and traditional new construction. Free brochure. **Crawford's Old House Store**

**62. Reproduction Hardware** — Early American door, window, and cabinet hardware, including door knockers, H, and H-L hinges. Solid brass box locks a specialty. Catalog free to professionals. **D.C. Mitchell Reproductions**

**28. Stained & Leaded Glass** — Designer and manufacturer of leaded and stained glass windows, lampshades, architectural pieces, etc. Works from your designs or will furnish one. Museum-quality restorations and reproductions. **Golden Age Glassworks**

**61. Door & Window Hardware** — Large selection of casement, door, window, and other decorative hardware — some of which has traditional styling. Catalog free to professionals. **H. B. Ives Co.**

**63. Early American Hardware** — Hand-forged reproduction door and window hardware for interior and exterior; black pyramid-head and flat-head screws. Catalog free to professionals. **Old Smithy Shop**

**64. Brass Hardware** — From house numbers to interior locksets to mortise locks: large selection of brass hardware with traditional look and feel. Free brochure. **Omnia Industries**

**41. Hardware & Plumbing** — Everything for the traditional building: decorative hardware, plumbing fixtures and accessories, architectural trims and medallions. Specializes in sales to architects, designers, and contractors. Catalog free to professionals. **Restoration Works**

**44. Exterior Shutters** — Moveable louvers in all sizes (including door panels), unfinished or primed and painted in color of your choice. Raised-panel and fixed-louver shutters also available. Free brochure. **Shuttercraft**

**65. Brass Hardware** — Brass hardware in Renaissance and Victorian styles. Also brass plumbing fixtures and accessories. Catalog free to professionals. **Sign Of The Crab**

**66. Early American Hardware** — Individually hand-forged hardware and iron accessories. Can duplicate original pieces, or work from photos or measured drawings. Catalog free to professionals. **Village Blacksmith Shop**

**67. Early American Hardware** — Authentic reproduction colonial wrought iron and forged hardware, including Suffolk and Norfolk latches. Catalog free to professionals. **Williamsburg Blacksmiths**

### ◆ Division 09 — FINISHES

**12. Embossed Wallcoverings** — The original embossed paintable Victorian wallcoverings — Lincrusta and Anaglypta — are easily applied and reasonably priced. They can hide a multitude of wall imperfections. Free brochure. **Bentley Brothers**

**13. Victorian Wallpapers** — Handprinted borders, friezes, ceiling papers, and coordinated wall fills are available directly from manufacturer by mail order. In-house service provides design assistance for your particular job. Free information. **Bradbury & Bradbury**

**19. Embossed Tin Ceilings** — New stamped Victorian patterns now available for both commercial and residential interiors. All the old standard patterns on hand, too. Catalog free to professionals. **Chelsea Decorative Metal**

**22. Wood Corner Beads** — Protect wall corners with decorative and practical wood corner beads; each corner is 47-5/8" long x 1-3/8" dia. Hundreds of other hard-to-find restoration items. Free brochure. **Crawford's Old House Store**

**25. Historic Hand-Decorated Tiles** — For fireplaces, kitchens, or bath: coordinated borders and patterns in any size. Victorian, Neo-Classical, DeMorgan, Art Nouveau, Arts & Crafts, Art Deco, and more. Period pavers. Free brochure. **Designs in Tile**

**29. Architectural Ornaments**—Large selection of cornices, panel moldings, ceiling rosettes, niches, columns, door pediments, etc. Available in either molded polyurethane or cast in plaster. Literature free to professionals. **Hampton Decor**

**42. Documentary Wallcoverings**—Fabric and wallcovering line is based on documents from America's most distinguished historic homes. Ideal for restorations or traditional homes. Color brochure free to professionals. **Richard E. Thibaut, Inc.**

**52. Sheet Metal Ceilings**—Ornamental tin ceilings are produced using dies from the turn of the century. Hundreds of patterns, including wall panels and ceilings. Ideal for commercial interiors. Catalog free to professionals. **W.F. Norman**

◆ **Division 10—SPECIALTIES**

**37. Pigeon Control**—Stainless steel needle strips form an impenetrable barrier to birds, are effective and humane, and practically invisible. Ideal for homes, commercial or public buildings. Free brochure. **Nixalite**

**39. Architectural Conservation Tools**—Crack gages, moisture meters, profile gages, temperature and humidity meters, microscopes, lights, plus books on all aspects of historic preservation, building science, and maintenance. Free catalog. **PRG**

◆ **Division 12—FURNISHINGS**

**51. Period Window Treatments**—Custom-made Greek Revival, Victorian, and early 20th century soft drapery valances designed and cut historically correct. Custom by mail service. Free information to professionals. **Vintage Valances**

◆ **Division 15—MECHANICAL**

**5. Kitchen & Bath Fixtures**—Quality reproduction bath and kitchen fixtures, including: pull-chain toilet, pedestal sink, low-tank toilet, copper kitchen sink, marble vanity, faucets, accessories, and parts. Catalog free to professionals. **Antique Baths & Kitchens**

**9. Nostalgia Bathroom Fixtures**—Converto showers, brass rods in special shapes, pedestal sinks, clawfoot tubs, brass sinks, brass plumbing fittings, high-tank toilets, faucets from wide selection of manufacturers. Catalog free to professionals. **Bathlines, Inc.**

**48. Victorian Bathroom Fixtures**—Brass faucets, showers, clawfoot tubs, pedestal sinks, marble, lights, vanities, and accessories. Doors and windows also. Free brochure. **Sunrise Specialty**

**53. Edwardian Bath Fixtures**—Exclusive importers of authentic English and French Edwardian bathroom fixtures and other traditional faucets and accessories. Washbasin sets, bathtub/shower sets, and bidet sets in chrome, brass, gold, and enameled finishes. Catalog free to professionals. **Watercolors**

◆ **Division 16—ELECTRICAL**

**6. Reproduction Lighting**—Handcrafted reproductions of 18th and 19th century lighting fixtures: chandeliers, sconces, and table lamps. All fixtures made of solid brass. Catalog free to professionals. **Authentic Designs**

**14. Mission/Prairie Lighting Fixtures**—Wide range of chandeliers and sconces in solid brass are precise reproductions of turn-of-the-century lighting. Also original commercial Holophane lights in various sizes. Catalog free to professionals. **Brass Light Gallery**

**40. Turn-Of-The-Century Lighting**—Authentic reproduction craftsman lighting fixtures fabricated in solid brass. Accented with finely made glass shades and art glass lanterns. UL listed. Free brochure. **Rejuvenation Lamp & Fixture**

**43. Antique Lighting**—The most complete source for antique and reproduction gas, oil, and electric lighting—from Victorian through turn-of-the-century. Replacement parts and shades. Lamp & fixture restoration available. Free brochure. **Roy Electric**

## FREE PRODUCT INFORMATION

If you can't find the postpaid Product Information Card that was enclosed with this issue, use the form below to get literature about historical products in **TRADITIONAL BUILDING**.

(Literature is free to qualified professionals.)

We'll forward your request to the respective manufacturers.

Allow 4-6 weeks for literature to arrive.

**THIS CARD EXPIRES DECEMBER 15, 1988.**

Name \_\_\_\_\_

Company \_\_\_\_\_

Address \_\_\_\_\_

City \_\_\_\_\_ State \_\_\_\_\_ Zip \_\_\_\_\_

Phone ( ) \_\_\_\_\_

Your Business:  Architect  Contractor  Interior Designer  
 Engineer/Consultant  Government  Other (specify): \_\_\_\_\_

For free product information, just circle the appropriate numbers:

001 002 003 004 005 006 007 008 009 010 011 012 013 014 015 016 017 018 019 020  
 021 022 023 024 025 026 027 028 029 030 031 032 033 034 035 036 037 038 039 040  
 041 042 043 044 045 046 047 048 049 050 051 052 053 054 055 056 057 058 059 060  
 061 062 063 064 065 066 067 068 069 070 071 072 073 074 075 076 077 078 079 080  
 081 082 083 084 085 086 087 088 089 090 091 092 093 094 095 096 097 098 099 100

Please enter a 1-Year subscription and bill me \$18.

Mail to: **TRADITIONAL BUILDING**, Product Literature Dept.,  
 199 BERKELEY PLACE, BROOKLYN, NY 11217. (718) 636-0788.

188-10

### Drinking Fountain

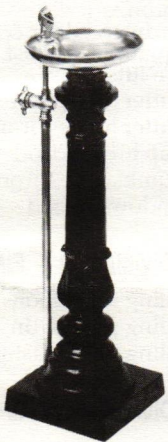
A quality reproduction with cast iron pedestal, brass fittings and stainless steel bowl.

Also Available . . .

- Medicine Cabinet
- Pedestal Sink
- Faucets
- Custom Work
- Pull Chain Toilet
- Copper Kitchen Sinks
- Accessories & Parts

Send \$1.00 for catalogue

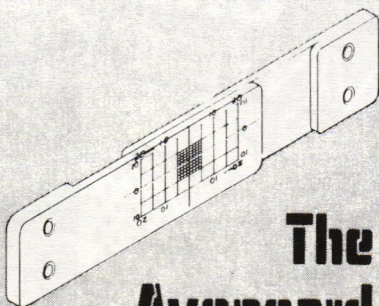
Designed by craftsman & licensed plumber Chris Rheinschild



2220 Carlton Way • Santa Barbara, CA 93109 • (805) 962-8598

Circle No. 5

PRG Sells Professional Tools



### The Avongard Calibrated Crack Monitor

A simple, accurate device for monitoring the movement of cracks and joints in concrete, brick or cement block structures.

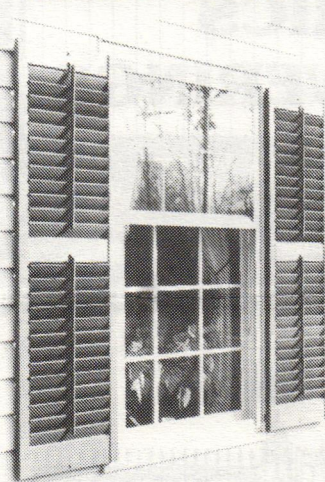
WRITE FOR FREE ILLUSTRATED CATALOG

• PRG, DEPT. T

5619 SOUTHAMPTON, SPRINGFIELD, VA 22151

Circle No. 39

### EXTERIOR WOOD SHUTTERS

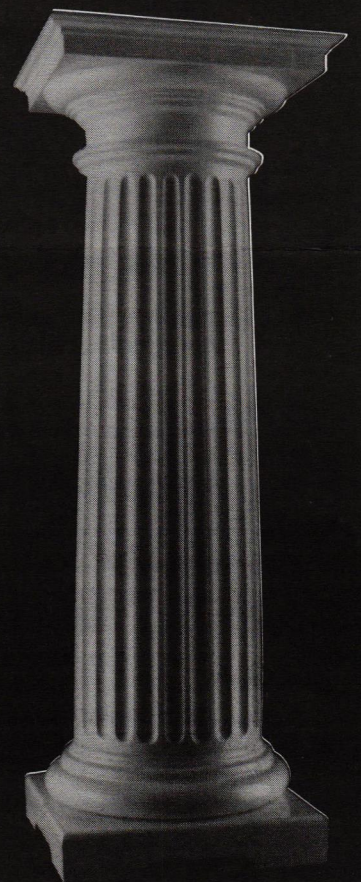


Hard-To-Find Wood Shutters with moveable louvers can be used outdoors or in. Fixed louver, raised panel, and custom arches also available. Order unfinished or primed and painted. Hinges and holdbacks shipped daily by UPS.

Brochure: (203) 453-1973  
**SHUTTERCRAFT** 282 Stepstone Hill  
 Guilford, Conn. 06437

Circle No. 44

### TRUE ARCHITECTURAL COLUMNS



Roman Doric Order

**CHADSWORTH**  
 INCORPORATED

Authentic Replication of Greek and Roman Orders

Chadsworth Columns and Capitals available in redwood, pine and other species.

Diameters — 6"–36" Heights — 18"–40"

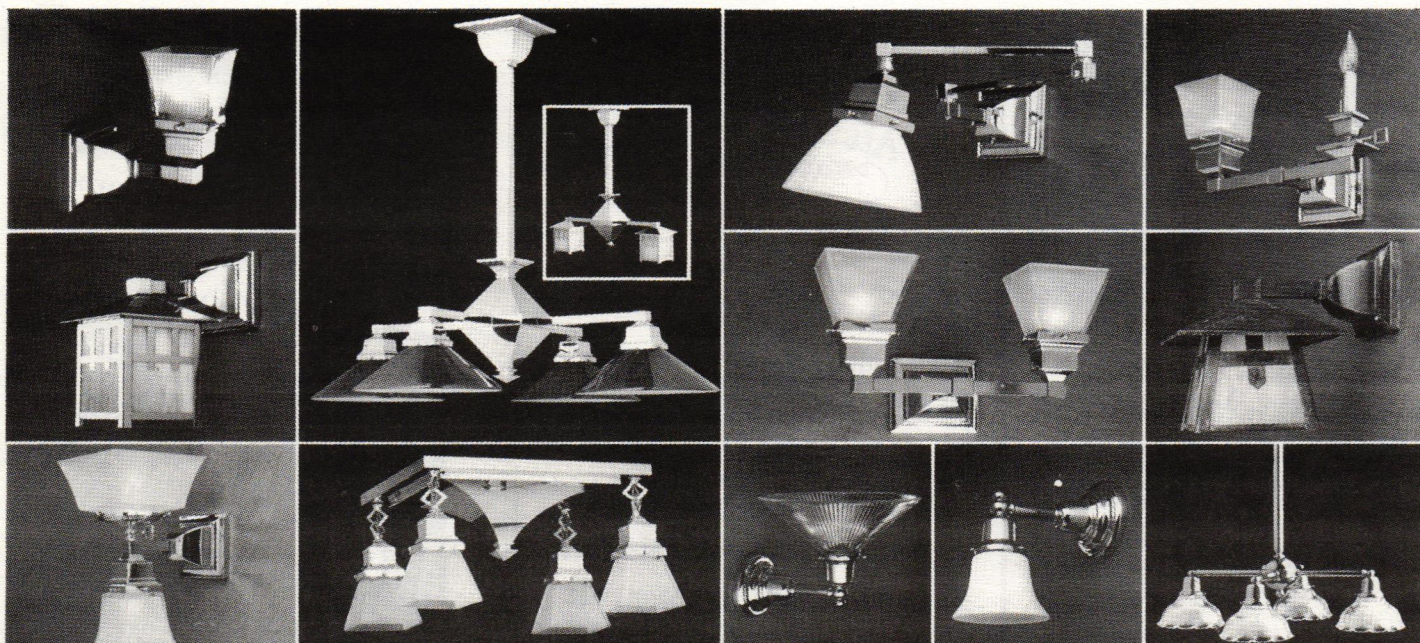
**ENTASIS (en'tā-sis)** One distinguishing feature of a true architectural column. The entasis is the curved or bowed outline of the shaft which counteracts the optical illusion of straight lines which appear to lean inward. Simply lay a straight edge along the length of our column and note the slight entasis.

We show not only the top half but also the bottom half of our column so that the entasis can be shown. This is one reason more people are choosing Chadsworth architecturally correct columns.

For information and brochure:  
 P.O. Box 53268 Atlanta, Georgia 30355  
 404-876-5410

Brochure \$2.00

Circle No. 18



Brass Light Gallery, 719 S. 5th Street, Milwaukee, WI 53204, (414) 383-0675

# BRASS CLASSICS

Circle No. 14

# Lanterns For Street And Park

The Sentry Electric Corporation, long known for their reproduction streetscape lighting fixtures, has a lamp we think is a beauty: The Sentry SCP Luminaire.

Designed for use in New York's Central Park, the SCP Luminaire combines the beauty of the Victorian era with the technology of the 1980's. The sculptured leaf-patterned hoops and tulip-shaped globe are in keeping with the look of existing lamps in the park. The globe is polycarbonate, and the caps, hoops, and base are cast aluminum, making it sturdy and vandal resistant.



Sentry's SCP Luminaire is rated at 100 - 250 watts (4000 to 20000 lumens). There are several models available including: Mercury, Trigger Start, Penning (Self) Start, and Metal Halide. While the SCP Luminaire does not come with a post, it can be specified with many posts, including the New York Henry Bacon type.

For more information and the name of a representative in your area, contact: **Sentry Electric Company, 185 Buffalo Avenue, Dept. TB, Freeport, NY 11520 (516) 379-4660. CSI# 16500 — TM**

**GOLDEN AGE GLASSWORKS**

- Museum Reproductions • Restorations
- Custom Windows • Victoriana
- Residences/Institutions (Original Old American, Imported Canadian, and English Glass Sold.)
- Many Victorian Pieces

B. Arrindell  
339 Bellevale Road  
Warwick, NY 10990  
(914) 986-1487

Circle No. 28

**CONGRATULATIONS**  
to  
**Clem Labine & The Staff Of**  
**TRADITIONAL BUILDING**  
on its  
**PREMIER ISSUE!**

\*\*\*

**Womrath Bookshops & Libraries**  
Brooklyn, New York

**DOCUMENTARY FABRICS WALLCOVERINGS**

*Historic Homes of America*

AVAILABLE THROUGH INTERIOR DESIGNERS & FINE SHOPS  
SEND \$1.00 FOR FULL COLOR BROCHURE  
RICHARD E. THIBAUT, 706 S. 21 ST. IRVINGTON, N.J. 07111 (201) 399-7888

Circle No. 42

**IRON FENCING & GATES**

Manufacturer of iron fencing & gates pattern in victorian & many more decoraties styles send \$1.00 for catalog and price list.

**CUSTOM IRONWORK, INC.**  
P.O. Box 99 • Union, KY 41091  
(606) 384-4486  
Manufacturer of Quality Iron Fencing

Circle No. 24

**AMWOOD DOES IT TO WOOD ROT.**

Replace rotted wood on window sills, door sills, porches, bannisters.  
Simple, fast, easy to apply.  
Stabilize and replace wood that has deteriorated from dry rot, hard usage or old age. The Amwood system saves time and money — and authenticity.

■ Penetrate, stabilize, salvage dry rotted wood with Amseal, the anti-dry rot, low viscosity proprietary formula epoxy with fungicide.  
■ Replace rotted out and missing sections with Amwood — trowelable, consistency-controlled, especially formulated for dry rot control. After hardening, Amwood can be shaped, carved, sawn, drilled, painted to match the original.

CALL OR WRITE TODAY FOR BROCHURE

**AM ADVANCED MATERIALS, INC.**  
New Answers to Old Problems.  
454-2 Main St., PO Box 917, Deep River, CT 06417  
(203) 526-9755 ■ (203) 526-5131 ■ Telex: 62648040

Circle No. 54

One of the South's most complete lines of Victorian Gingerbread — Traditionally handcrafted in our own shop.

Pride of tradition  
Pride of craftsmanship  
Pride of quality  
Our name is on our product™

**ANTHONY WOOD PRODUCTS**  
INCORPORATED  
Box 1081TB Hillsboro, TX 76645  
817/582-7225  
Illustrated catalog available - \$2.00

*the Original* **CROSS VINYLattice**

**Never Needs Painting**

Now or soon to be available at over 1000 fine stores

**Lasts A Long Time**  
For more information call  
**1 800 521-9878**

Circle No. 23

**ALBERT J. WAGNER & SON**  
INCORPORATED  
SHEET METAL CONTRACTORS  
ESTABLISHED 1894

Sheet Metal Contractors  
Architectural Repairs and Restoration  
Cornice, Mold and Facade  
Ferrous and Copper Materials  
Metal and Glass Skylight  
Commercial/Industrial Fab  
Prototypes  
Slate & Tile Roofing

3762 N. Clark Street Chicago, IL 60613  
(312) 935-1414

## editorial index

ITEM	PAGE
Ann Beha — profile	3
Architecture Vs. Neo-Traditionalism	2
Calendar of Events	23
Siegel's Scratchboard	8
Product Literature	20
<b>◆ Division 05 — METALS</b>	
Fences, wrought iron	12
Ornament, sheet metal	14
<b>◆ Division 06 — WOOD &amp; PLASTICS</b>	
Lattice, vinyl	14
Wood, restoration with epoxy	16
<b>◆ Division 07 — THERMAL &amp; MOISTURE PROTECTION</b>	
Roofing, terne metal	18
<b>◆ Division 08 — DOORS &amp; WINDOWS</b>	
Box locks, brass	7
Door bell plate, brass	7
Door bell, twist-type	10
Door grips, bronze	7
Door knocker, iron	7
Door levers, brass	8
Door lever, brass — handicapped access	8
Door studs, iron	10
Door & window hardware, special report	4
Doorknobs, mineral	10
Doors, screen — wooden	12
Hardware chart, door & window	5
Hardware, door & window — additional sources	10
Hardware, door & window — bronze	7
Hardware, door & window — quality checklist	4
Sash lifts, brass	7
Shutter dogs, iron	7
Shutter hinges, iron	8
Strap hinges, iron	7
Thumbatches, iron	8
Windows, wood — custom	14
<b>◆ Division 09 — FINISHES</b>	
Ceiling medallions, plaster	1
Ceiling panels, tin	14
Ceiling tiles, plaster	18
<b>◆ Division 10 — SPECIALTIES</b>	
Plaques, bronze	14
<b>◆ Division 11 — EQUIPMENT</b>	
Cookstove, AGA	13
<b>◆ Division 12 — FURNISHINGS</b>	
Glass, beveled	17
Ornament — photo-reproduced on aluminum panels	19
<b>◆ Division 16 — ELECTRICAL</b>	
Lanterns, streetscape	22

**Jack Wallis' Door Emporium**

New Door & Hardware Catalogue \$3.50

Excellence in Handcrafted Doors & Stained Glass  
Color Catalog 83.00  
RT. 1 BOX 22A MURRAY, KY 42071 502-489-2613

# UPCOMING EVENTS

September 12, 1988

## Painting & Decorating Course

3-year course for serious decorative painters, taught by master craftsman from England. Deadline for applications is September 12th. Only 15 students will be accepted. Graduates are eligible for the Advanced Craft Certificate.

Send letter or resume to: Lowell Smith, Dean of Continuing Education, Asheville-Buncombe Technical Community College, 340 Victoria Road, Asheville, NC 28801 (704) 254-1921.

October 5-8, 1988

## 20/20 Visions

Association for Preservation Technology's 20th anniversary conference will focus on what's happened in preservation in the past 20 years and the direction it will take in the next 20. Pre-conference training courses begin October 3: Gardens; Paints/Coatings; Site Visits; Documentation And Assessment of Historic Buildings. Copley Plaza, Boston, MA.

For more information, contact: Historic Massachusetts, Inc., 45 School Street, Boston, MA 02108 (617) 350-7032.

October 12, 19, 26,

## The Vale Lecture Series

& November 2, 1988

Series of 4 lectures about New England architecture 1750-1850 — a regional perspective. Held at the Lyman Estate, 185 Lyman Street, Waltham, MA. Advance registration recommended.

For more information, contact: SPNEA, 141 Cambridge Street, Boston, MA 02114 (617) 227-3956.

October 19-23, 1988

## 42nd Annual Preservation Conference

National Trust for Historic Preservation's annual conference. Lectures, field trips, special events, and the Rehabitat Show. Cincinnati Convention Center, Cincinnati, OH.

For more information, contact: National Trust for Historic Preservation, 1785 Massachusetts Ave., NW, Washington, DC 20036 (202) 673-4100.

October 19, 1988

## RESTORE 9-Month Course

Restoration skills training program oriented toward building professionals. Classes will be held at the Glen-Gery Design Center, 211 East 49th Street, NYC. Tuition is \$950, which includes lab fees and all printed course materials.

For applications & further information, contact: Jan C.K. Anderson, RESTORE, 160 South Street, New York, NY 10038 (212) 766-0120.

November 1-3, 1988

## Conference On Fire Safety & Historic Preservation

Second Vermont conference for building professionals, preservationists, and fire safety officials on how to meet sometimes conflicting requirements for fire safety & historic preservation. Ascutney Mountain Resort, Brownsville, VT.

For more information, contact: Charlotte Barrett, Institute for the Building Crafts, P.O. Box 1777, Windsor, VT 05089 (902) 674-6752.

December 7-9, 1988

## The Interiors Conference For Historic Buildings

3-day national conference focusing on design and technical issues concerning the rehabilitation and restoration of historic interiors. Franklin Plaza Hotel, Philadelphia, PA.

For more information, contact: The Interiors Conference for Historic Buildings, P.O. Box 27080, Central Station, Washington, DC 20038 (202) 343-9578.

Closing for Upcoming Events is the 1st of the month, 2 months prior to publication date. If you have upcoming events you'd like us to consider including, send information to: Calendar Editor, TRADITIONAL BUILDING, 199 Berkeley Pl., Brooklyn, NY 11217.



- Your design or ours
- Your fabric or ours
- Your research or ours
- Your budget or ours

For assistance send project details

TRADITIONAL WINDOWS ARE WELL DRESSED

Specializing in documented draping

## Vintage Valances

Box 43326 B  
Cincinnati, Ohio 45243  
(513) 561-8665

Draper for Lincoln Home restoration

Circle No. 51

## advertiser index

RS#	COMPANY	PAGE
<b>Division 2 — Sitework</b>		
010	Bench Manufacturing Co.	17
007	Advanced Materials	19
<b>Division 4 — Masonry</b>		
003	Solid Flue	23
<b>Division 5 — Metals</b>		
	Albert J. Wagner & Sons	22
017	Campbellsville Industries	23
021	Country Iron Foundry	17
024	Custom Ironwork, Inc.	22
027	Erie Landmark Co.	19
032	La Haye Bronze	13
046	Smith-Cornell	20
047	Stephoe & Wife	19
<b>Division 6 — Wood &amp; Plastics</b>		
054	Advanced Materials	22
	Anthony Wood Products	22
018	Chadsworth, Inc.	21
	Colonial Woodworks	16
023	Cross Industries	22
026	Donnell's Clapboard Mill	14
	Mad River Woodworks	16
036	Maurer & Shepherd, Joyners	14
045	Silverton Victorian Millworks	23
050	Vintage Lumber Company	17
<b>Division 7 — Thermal &amp; Moisture Protection</b>		
016	C&H Roofing	12
033	M. J. Mullane	23
<b>Division 8 — Doors &amp; Windows</b>		
055	18th Century Hardware	10
008	Ball and Ball	9
015	Brian F. Leo Custom Hardware	8
028	Golden Age Glassworks	22
	Jack Wallis' Doors	22
	Kenmore Industries	20
	Oregon Wooden Screen Door	23
041	Restoration Works, Inc.	11
044	Shuttercraft	21
<b>Division 9 — Finishes</b>		
	A. A. Abbingdon Affiliates	16
	Benjamin Moore & Co.	12
012	Bentley Brothers	18
013	Bradbury & Bradbury	13
019	Chelsea Decorative Metal	17
022	Crawford's Old House Store	10
025	Designs In Tile	16
029	Hampton Decor	23
042	Richard E. Thibaut, Inc.	22
052	W. F. Norman Corp.	18
<b>Division 10 — Specialties</b>		
037	Nixalite Of America	18
039	PRG	21
<b>Division 12 — Furnishings</b>		
051	Vintage Valances	23
<b>Division 15 — Mechanical</b>		
005	Antique Baths & Kitchens	21
009	Bathlines, Inc.	15
048	Sunrise Specialty Co.	20
053	Watercolors	19
<b>Division 16 — Electrical</b>		
006	Authentic Designs	19
014	Brass Light Gallery	21
040	Rejuvenation Lamp & Fixture	24
043	Roy Electric Co.	18
	Victorian Lighting Works	19

## OREGON WOODEN SCREEN/STORM DOORS A TRILOGY OF VALUE

Whether you're remodeling a home on the historical register, or building a new one, Oregon Wooden Screen Doors give you a high quality blend of function, fine craftsmanship and beautiful architectural styling. Collections of elegant designs to choose from, ranging from the celebrated classic design and symmetry; to highly stylish; to ornamental with scrollwork and fan motif; or you may submit your own design. Each door is truly custom crafted to meet your specifications; constructed with mortise-tenon and nail-less technique. Take a look at Oregon Wooden Screen Doors as a valuable investment in beauty and wisdom.

Our brochure lists many options, including kits, and is a useful resource to fine crafted doors and more. For further detailed information mail \$3 (purchase applied) to:

Oregon  
**Wooden Screen Door**  
330 High St. Dept TB, Eugene, OR 97401



## When Safety is the Consideration . . .

## SOLID/FLUE® Chimney Lining System

- Adds strength and stability
- Pumped-in one piece lining
- Insulative
- Non corrosive
- Cost efficient
- Customized

SOLID/FLUE® doesn't compromise architectural design.

For a dealer in your area, call or write

**SOLID/FLUE®**  
9797 Clyde Park SW  
Byron Center, MI 49315  
(616) 878-3577  
1-800-444-FLUE



Circle No. 3

## Hampton Decor

The glory of the past for today's interior.  
• Offers you a selection of the most beautiful and classical styles of historic architecture.  
• Large variety of cornices, panel mouldings, ceiling roses, niches, columns, door pediments, etc., available in different styles and dimensions.



Elegance at affordable prices.

Write for brochure \$2.00

We specialize in repair and restoration of plain and ornamental plaster work.

**Hampton Decor**  
30 Fisk St., Jersey City, NJ 07305  
(201) 433-9002

Circle No. 29

## CUSTOM HISTORICAL REPRODUCTIONS IN METAL

- CORNICES URNS
- LOUVERS FINIALS
- DORMERS RAILINGS
- BALUSTRADES CUPOLAS
- SIGNS STEEPLERS

MANY STOCK DESIGNS AVAILABLE

## CAMPBELLVILLE INDUSTRIES, INC.

P.O. Box 278-T Ph. 800-626-0350  
CAMPBELLVILLE, KY 42718

Circle No. 17

## New! Protection for Your Slate Roof!



No need to take risks! Be sure that there is never any damage from snow or broken slates that slide off your roof! Cast bronze designs for durability.

Reasonable cost makes it an excellent investment. Fast installation. Get the facts! Send today for our free brochure!

**M.J. MULLANE CO., P.O. Box 108  
Hudson, MA 01749 508/568-0597**

Circle No. 33

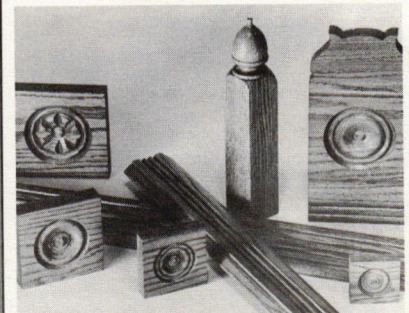
## Top Quality Precision Millwork

CASINGS • BASES • CROWNS • CORNER BLOCKS

## VICTORIAN ELEGANCE

DOORS • GINGERBREAD • WAINSCOT

LARGEST INVENTORY OF VICTORIAN MOULDINGS & MILLWORK ANYWHERE



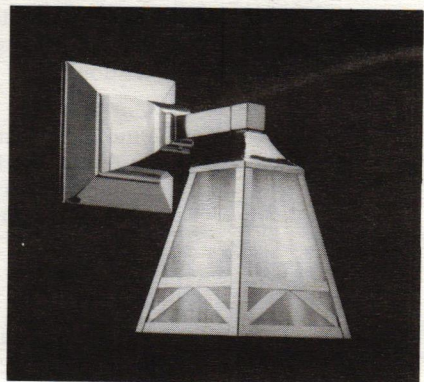
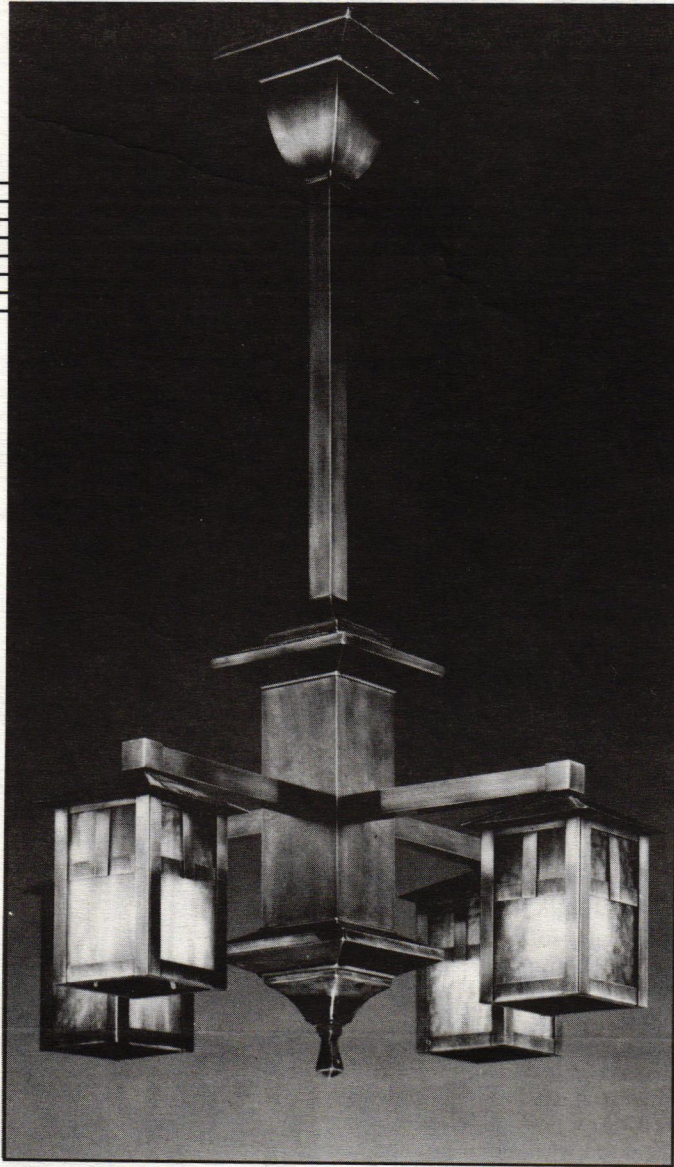
Specializing in Customer Service  
Buy Direct From Manufacturer  
Top Quality, Precision-made Products  
Premium & Commercial Grades Available  
No Minimum Order - Rush Orders are No Problem  
We're Experts in Shipping & Packaging  
Full Color Catalog with lots of Construction Ideas

**SILVERTON Victorian Millworks**  
Send \$4 for Catalog or Phone and use your Credit Card.  
P.O. Box 2987-TB1  
Durango, Colorado 81302  
303/259-5915  
Catalog free to professionals.

Circle No. 45

# Turn of the Century Lighting

1870's-1930's



Handsomely crafted from solid brass. Most authentic reproductions available. Accented with finely made glass shades and art glass lanterns. UL listed. Satisfaction guaranteed. Catalog of over 100 fixtures, \$3. Craftsman Collection brochure, free.



**Rejuvenation Lamp & Fixture Co.**  
901-TB North Skidmore • Portland, Oregon 97217 • (503) 249-0774

Circle No. 40